

COLOUR CODED PARTS:

FRONT TILLER SHROUD:
 S08-029-01011 - RED (DARK)
 S08-029-01051 - BLUE
 S08-029-01041 - GREEN
 S08-029-01061 - BLACK
 S08-029-01071 - CHAMPAGNE
 S08-029-01018 - SPIRIT RED

BACK TILLER SHROUD:
 S08-029-00211 - RED (DARK)
 S08-029-00251 - BLUE
 S08-029-00241 - GREEN
 S08-029-00261 - BLACK
 S08-029-00271 - CHAMPAGNE
 S08-029-00218 - SPIRIT RED

FRONT SHROUD ASSEMBLY:
 S08-029-00311 - RED (DARK)
 S08-029-00351 - BLUE
 S08-029-00341 - GREEN
 S08-029-00361 - BLACK
 S08-029-00371 - CHAMPAGNE
 S08-029-00318 - SPIRIT RED

SEPERATE COMPONENTS AVAILABLE:

FROM THE TILLER:
 SEE OVERLEAF

FROM THE FRONT FRAME:
 C01-029-00800 - FRONT BUMPER

FROM THE FRONT SHROUD:
 C26-029-00100 - LH FOOREST PAD
 C26-029-00200 - RH FOOTREST PAD

FROM THE HEADLAMP:
 C13-022-00900 - BULB

REV No.	DETAILS	DATE	DRAWN
A	4-POLE MOTOR AND NEW SEAT INFO ADDED	15-7-13	PMK
B	INDICATOR CODE CHANGED	31/1/14	PMK
C	SPIRIT RED SHROUDS ADDED	9/4/14	PMK



Ainley's Industrial Estate, Elland HX5 9JP
 T: +44 (0) 1422 314488
 E: enquiries@drivemedical.co.uk
 W: www.drivemedical.co.uk/technical

TITLE:

Regatta

REGATTA
PARTS MANUAL

DATE: 02/01/07

SHEET No: 1 of 3

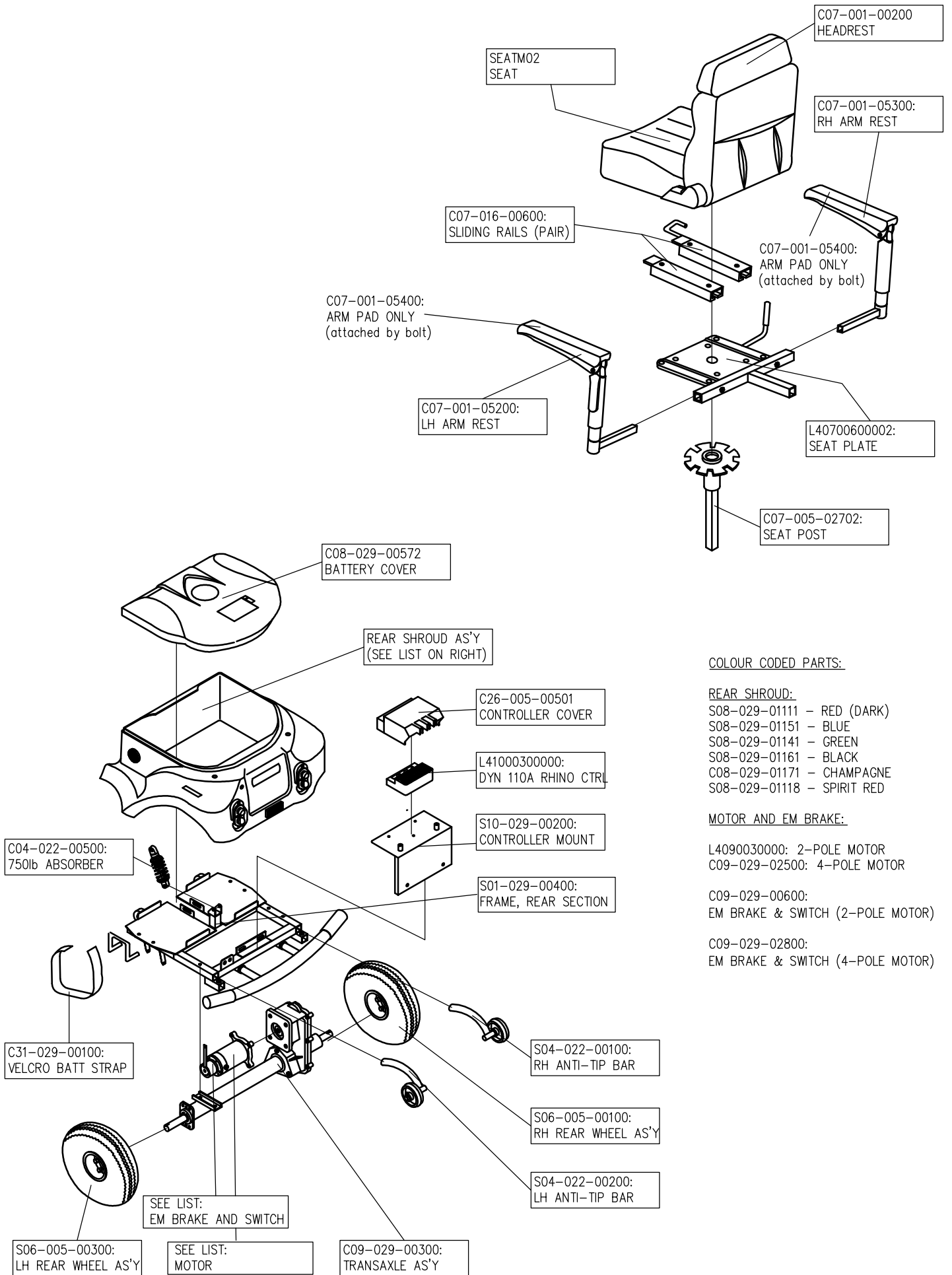
DRAWN: PMK

CHECKED:

REVISION No: C

SCALE: NTS

DWG No: Z40957



COLOUR CODED PARTS:

REAR SHROUD:

- S08-029-01111 - RED (DARK)
- S08-029-01151 - BLUE
- S08-029-01141 - GREEN
- S08-029-01161 - BLACK
- C08-029-01171 - CHAMPAGNE
- S08-029-01118 - SPIRIT RED

MOTOR AND EM BRAKE:

- L4090030000: 2-POLE MOTOR
- C09-029-02500: 4-POLE MOTOR
- C09-029-00600: EM BRAKE & SWITCH (2-POLE MOTOR)
- C09-029-02800: EM BRAKE & SWITCH (4-POLE MOTOR)



Ainley's Industrial Estate, Elland HX5 9JP
 T: +44 (0) 1422 314488
 E: enquiries@drivemedical.co.uk
 W: www.drivemedical.co.uk/technical

TITLE:

Regatta

REGATTA
PARTS MANUAL

DATE:

02/01/07

SHEET No:

2 of 3

DRAWN:

PMK

CHECKED:

REVISION No:

C

SCALE:

NTS

DWG No:

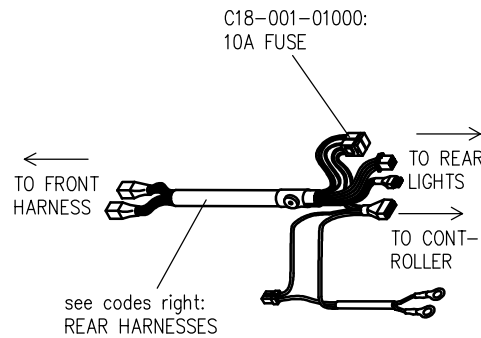
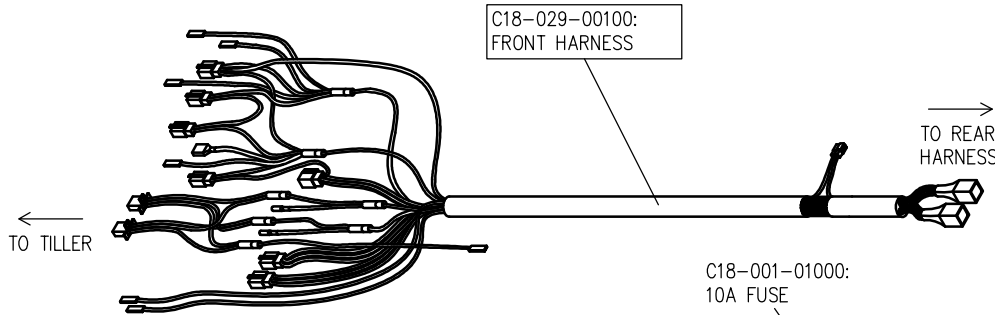
Z40957

OTHER PARTS AVAILABLE:

C12-001-02000: 5A CHARGER
Z20972: 7A CHARGER

C17-029-00500: 20A FUSE

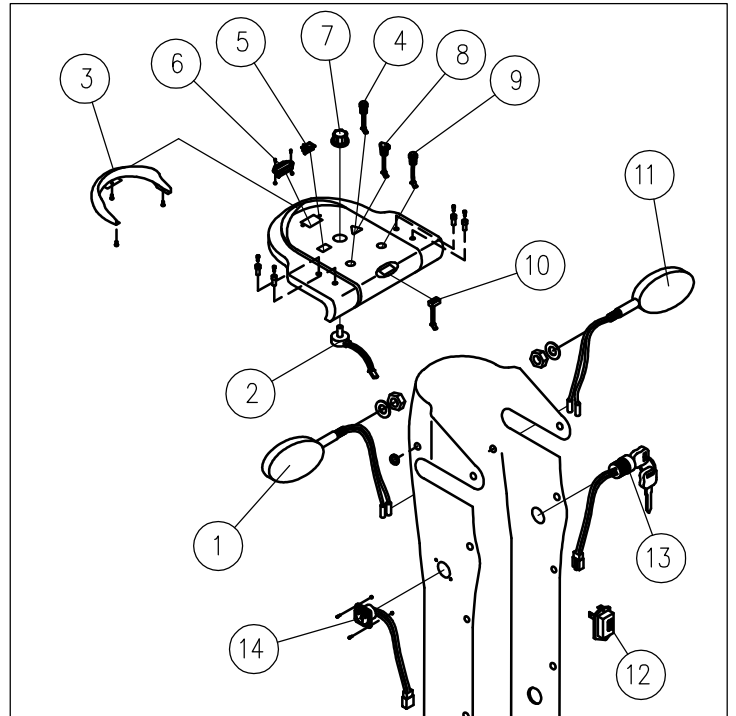
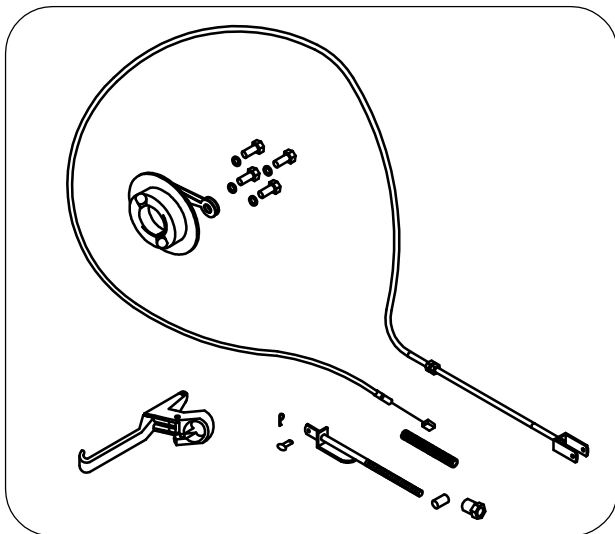
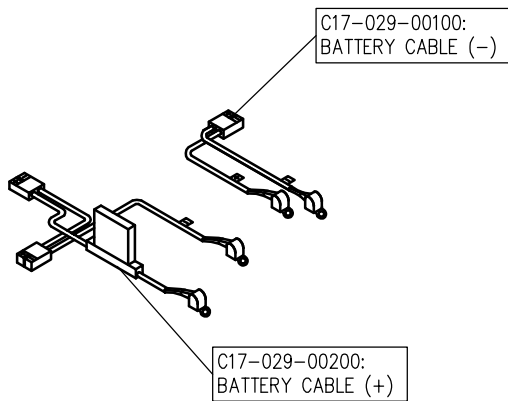
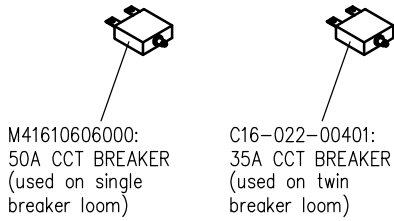
12V40AH: 44Ah BATTERY
12V70AH: 70Ah BATTERY
(SMALL CASE)



REAR HARNESSES (LOOM):

C18-029-00700:
FOR TWIN BREAKER MODEL

L41800700000:
FOR SINGLE BREAKER MODEL



TILLER PARTS AVAILABLE:

1. C16-022-01300: LH FRONT SIGNAL LAMP
2. M41100300000: SPEED POT
3. C08-022-03100: SHADE
4. C16-022-00500: HEADLAMP SWITCH
5. M41610401000: INDOOR / OUTDOOR SWITCH
6. C11-022-00100: BATTERY INDICATOR
7. 3D2600200000: SPEED DIAL KNOB
8. L41600100000: HAZARD SWITCH
9. C16-022-00700: HORN BUTTON
10. C16-022-00800: INDICATOR (SIGNAL) SWITCH
11. C16-022-01500: RH FRONT SIGNAL LAMP
12. C12-001-10701: FLASHER RELAY
13. M41810807000: IGNITION SWITCH AS'Y
14. M41210216000: CHARGER SOCKET

driveTM

Ainley's Industrial Estate, Elland HX5 9JP
T: +44 (0) 1422 314488
E: enquiries@drivemedical.co.uk
W: www.drivemedical.co.uk/technical

TITLE:

Regatta

REGATTA
PARTS MANUAL

DATE:

02/01/07

SHEET No:

3 of 3

DRAWN:

PMK

CHECKED:

REVISION No:

C

SCALE:

NTS

DWG No:

Z40957