

**CLOSED LOOP HANDLE C/W BRAKE LEVER
AND HANDGRIP
(BRAKE CABLE NOT INCLUDED)**

FOR TW015 (STEEL):
Z25310-48: RHS / STEEL / CHROME
Z25320-48: LHS / STEEL / CHROME

**FRONT CASTOR ASSEMBLY WITH
FORK & 7" WHEEL**

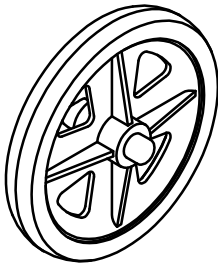
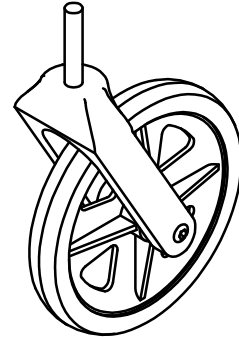
FOR TW015: Z25250-17
(CHROME FORK WITH PLASTIC WHEEL)

TRIWALKER ACCESSORIES AVAILABLE:

TWA001-48:
TRIWALKER BASKET

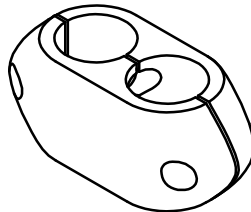
TWA002-48:
TRIWALKER BAG

TWA003-48:
TRIWALKER TRAY FOR BASKET



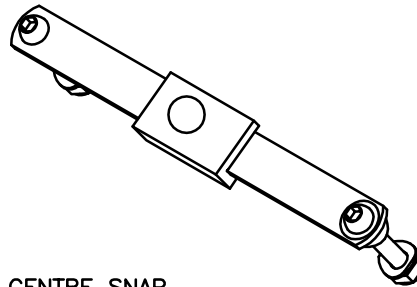
**Z25260-48:
7" REAR WHEEL
ASSEMBLY**

FOR TW015



**Z25240-48
CENTRE PLASTIC
BRACKET AS'Y**

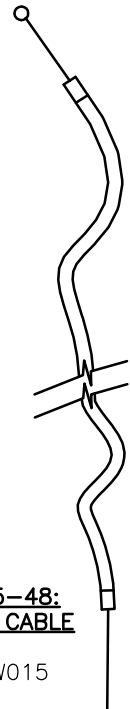
FOR TW015



**CENTRE SNAP
LINK ASSEMBLY**

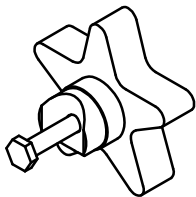
Z25230-48: WITH BLACK BALL

FOR TW015



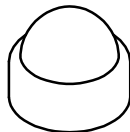
**Z25305-48:
BRAKE CABLE**

FOR TW015



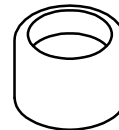
**Z25170-48:
HEIGHT ADJ
HANDLE WITH
HEX BOLT**

FOR TW015



**Z25251-48
LARGE PLASTIC
CASTOR NUT
COVER**

FOR TW015



**Z25308-48:
TRIWALKER PLASTIC
TUBE ENDS**

FOR TW015

REV No.	DETAILS	DATE	DRAWN
A	ALUMINIUM DETAILS REMOVED	4/8/14	PMK



Ainley's Industrial Estate, Elland HX5 9JP
T: +44 (0) 1422 314488
E: enquiries@drivemedical.co.uk
W: www.drivemedical.co.uk/technical

TITLE:

TW015
STEEL TRIWALKER
PARTS CATALOGUE

DATE: 21/03/13

SHEET No: 1

DRAWN: PMK

CHECKED:

REVISION No: -

SCALE: NTS

DWG No: ZTW48