

Technical Bulletin

Product Name: Sport Rider and Easy Rider Scooters
(REF: SR001 and SR003)

Date of Bulletin: 18th June 2018

Date of Change: Not Applicable

Bulletin Number: TB0069

Details: Guide for Changing Speedo to MPH

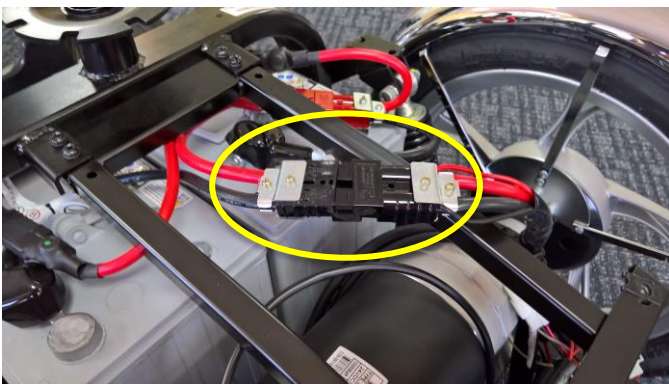
Description:

This is a guide for changing the speedometer from KPH (KMH) to MPH (m/h), or vice versa:

1. Switch the scooter off and disconnect the two black Anderson plugs on the battery leads (see image below).
2. Hold down the MODE and RESET buttons on the left hand dial, whilst plugging the two black Anderson connectors back together.

Note – this step will require two people.

3. The display will only show the speed setting now, as indicated in the photo below (either M/h for miles per hour, or KMH for kilometres per hour).
4. Press the MODE button to toggle between the M/h or KMH setting.
5. When you have the required setting, hold down the MODE button for 3 seconds and the screen will go blank.
6. Restart the scooter as normal and speedo will show the selected setting.



Picture shows two black Anderson connectors



Picture shows MODE and RESET buttons (arrowed) and speed setting (ringed)

Actioned by: Denzel Collis
Contact Details: Technical Services Manager – DDH
Contact: 01274 475145

DeVilbiss Healthcare Ltd,
Heathfield Lane, Birkenshaw,
West Yorkshire, BD112HW
Tel: 0845 0600 333
Email: info@drivedevilbiss.co.uk

www.drivedevilbiss.co.uk