

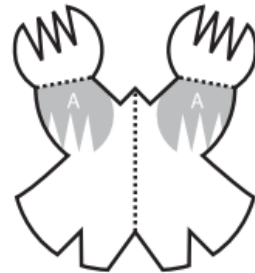
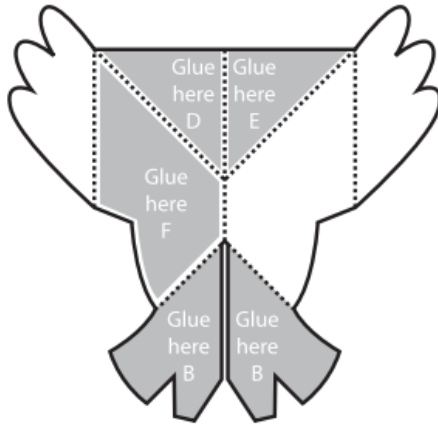
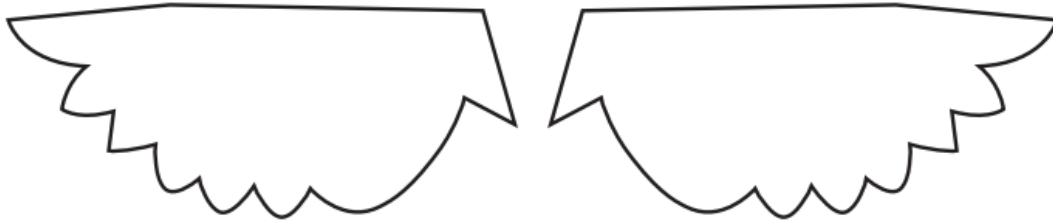
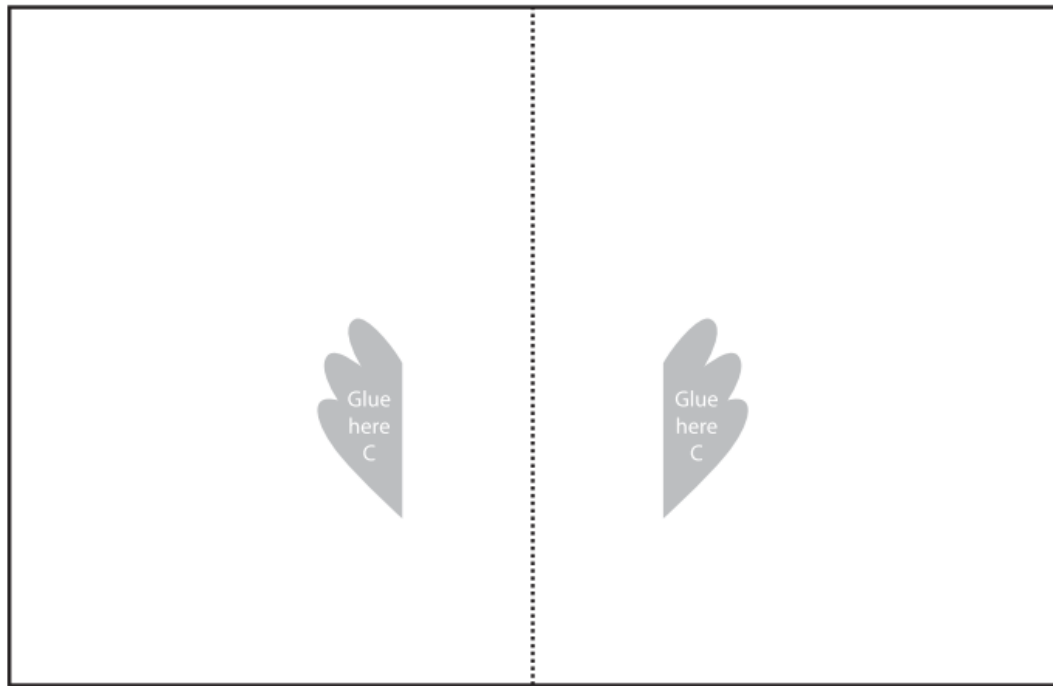
How to make your

EAGLE POP-UP



Remember to...

- Cut the solid thick black lines
- Fold the dotted black lines





Step 1: 5 pop-up pieces (The eagle's head, body, tail/feet, left & right wings) and 1 card.



Step 2: Fold the card in half along the dotted lines. Set it aside for now.



Step 3: Take the eagle's body piece and fold it in half along the dotted line.



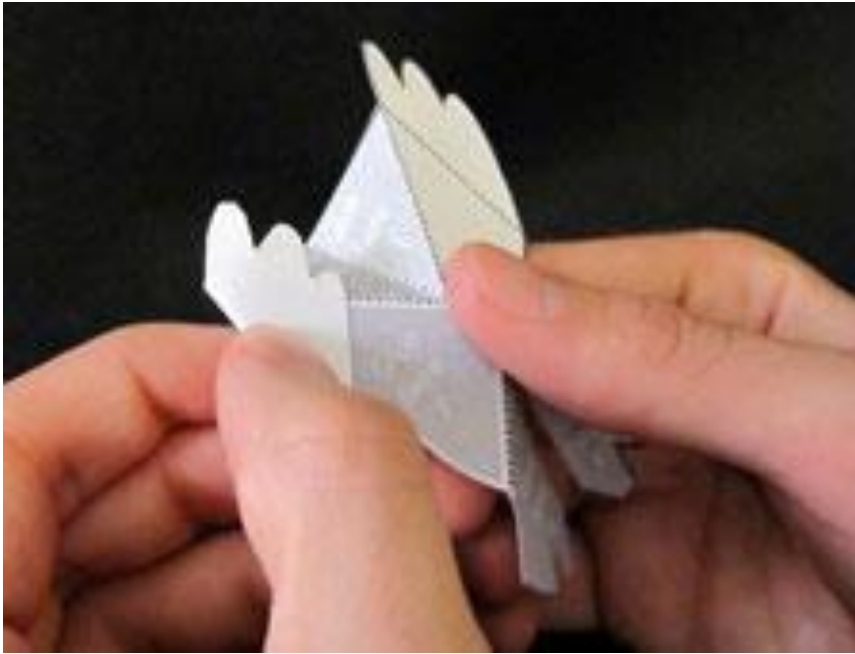
Step 4: Fold the triangle at the top back (away from you) then unfold it.



Step 5: Now fold the triangle forward (towards you) and unfold it.



Step 6: Unfold the body piece. Push the triangle shape at the top inwards, until the fold in the middle of the triangle pops inside out (away from you).



Step 7: Fold the body's outer tabs up, towards you.



Step 8: Fold both tail-shaped tabs inward. Set the body piece aside for a moment.



Step 9: Take the tail & feet piece and fold it in half so the dotted line folds inwards (away from you).



Step 10: Put a small amount of glue on one of the areas marked "A"



Step 11: Fold the eagle's foot down and hold it firmly until the glue dries.



Step 12: Put a small amount of glue on the other area marked "A"



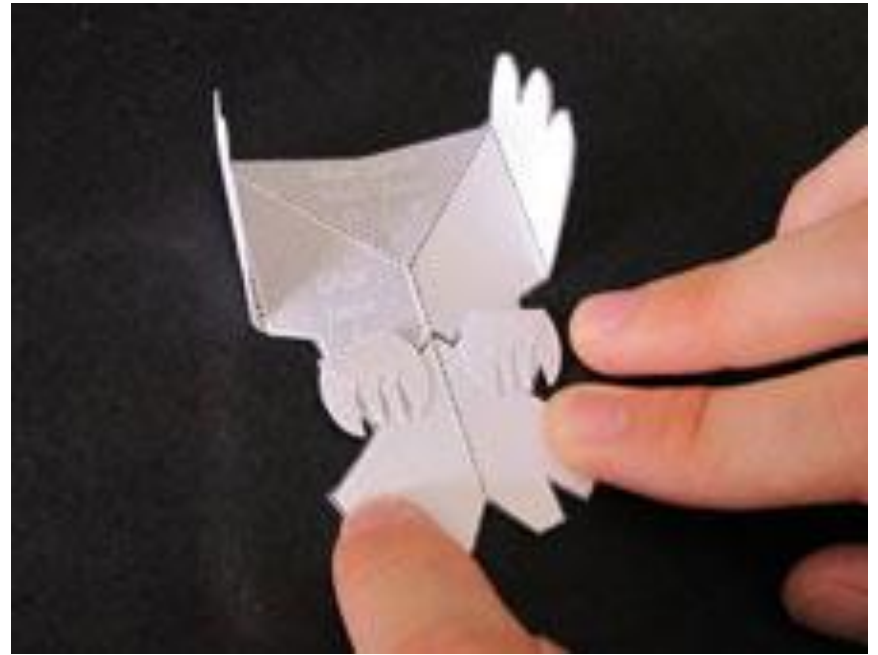
Step 13: Fold the eagle's foot down and hold it firmly until the glue dries.



Step 14: Take your eagle's body piece and spread it flat. Put a small amount of glue on the areas marked "Glue here B".



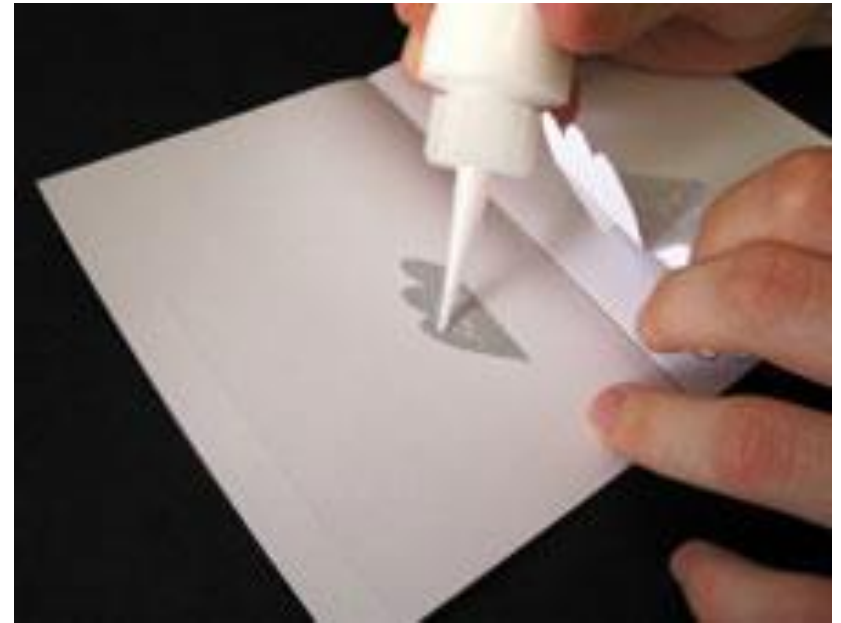
Step 15: Match the tail/feet piece to the matching "Glue here B" tabs. Make sure the middle fold of the tail piece lines up with the middle fold of the body piece.



Step 16: Press the tail down firmly, allowing the glue to dry.



Step 17: Push in on the tail piece until it pops inside out, just like the triangle at the top of the piece.



Step 18: Take your card and lay it flat. Put a small amount of glue on one of the gray areas marked "Glue here C".



Step 19: Match the tab on the side of the eagle's body piece to the gray shape on the card marked "Glue here C", and press down firmly, allowing the glue to dry. Make sure the middle fold of the piece lines up with the middle fold of the card!



Step 20: Put a small amount of glue on other gray area marked "Glue here C".



Step 21: The body should lie completely flat on the card. Press the matching tab down on the area marked "Glue here C", making sure the middle fold of the piece lines up with the middle fold of the card. Allow time for the glue to dry.



Step 22: Close the card, making sure the body piece pops forward (towards you) and the triangle shape and tail piece fold inward (away from you).



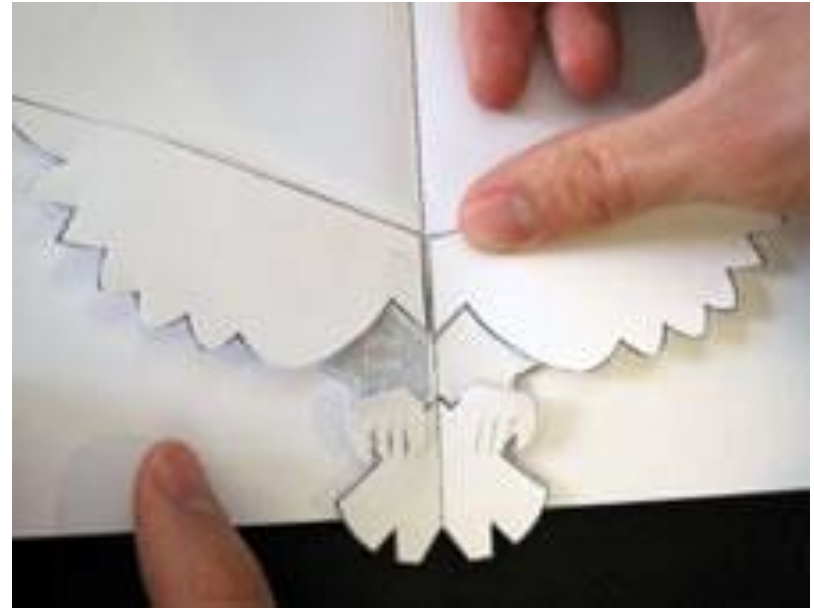
Step 23: Open the card again and press it flat. Put a small amount of glue on the area marked "Glue here D".



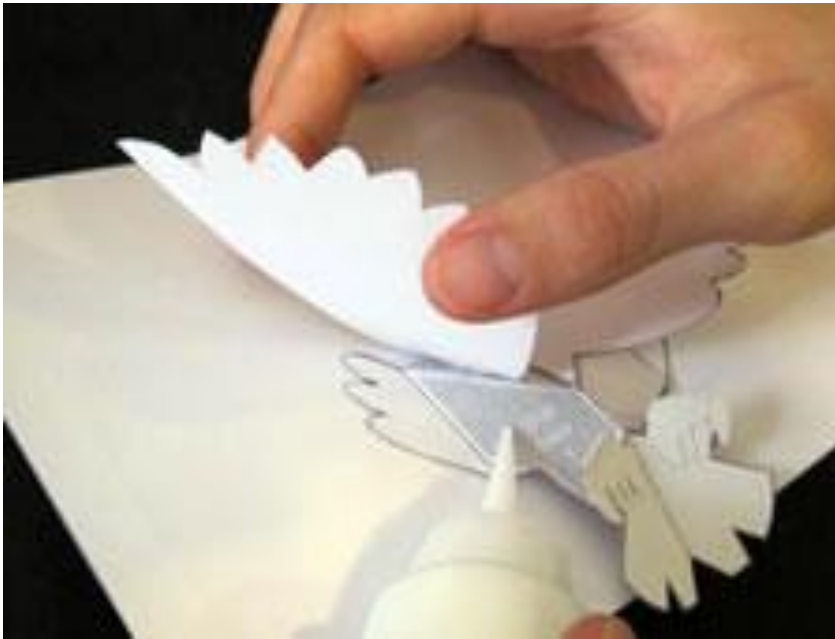
Step 24: Take the eagle's left wing piece and line up its triangle-shaped corner with the matching glue shape marked "Glue here D". Make sure it doesn't overlap the fold in the middle of the body piece and press it down firmly, allowing the glue to dry.



Step 25: Put a small amount of glue on the area marked "Glue here E".



Step 26: Take the eagle's right wing piece and line up its triangle-shaped corner with the matching glue shape marked "Glue here E". Make sure it doesn't overlap the fold in the middle of the body piece and press it down firmly, allowing the glue to dry.



Step 27: Lift up the eagle's left wing slightly and put a small amount of glue on the area marked "Glue here F".



Step 28: Take the eagle's head piece and match it to the glue area, making sure to slide the wing through the slot on the eagle's neck.



Step 29: Press it down firmly and allow time for the glue to dry.



Step 30: Close the card, making sure the wings swing upward as the card closes, and the tail folds inward. Your eagle card is now complete!