

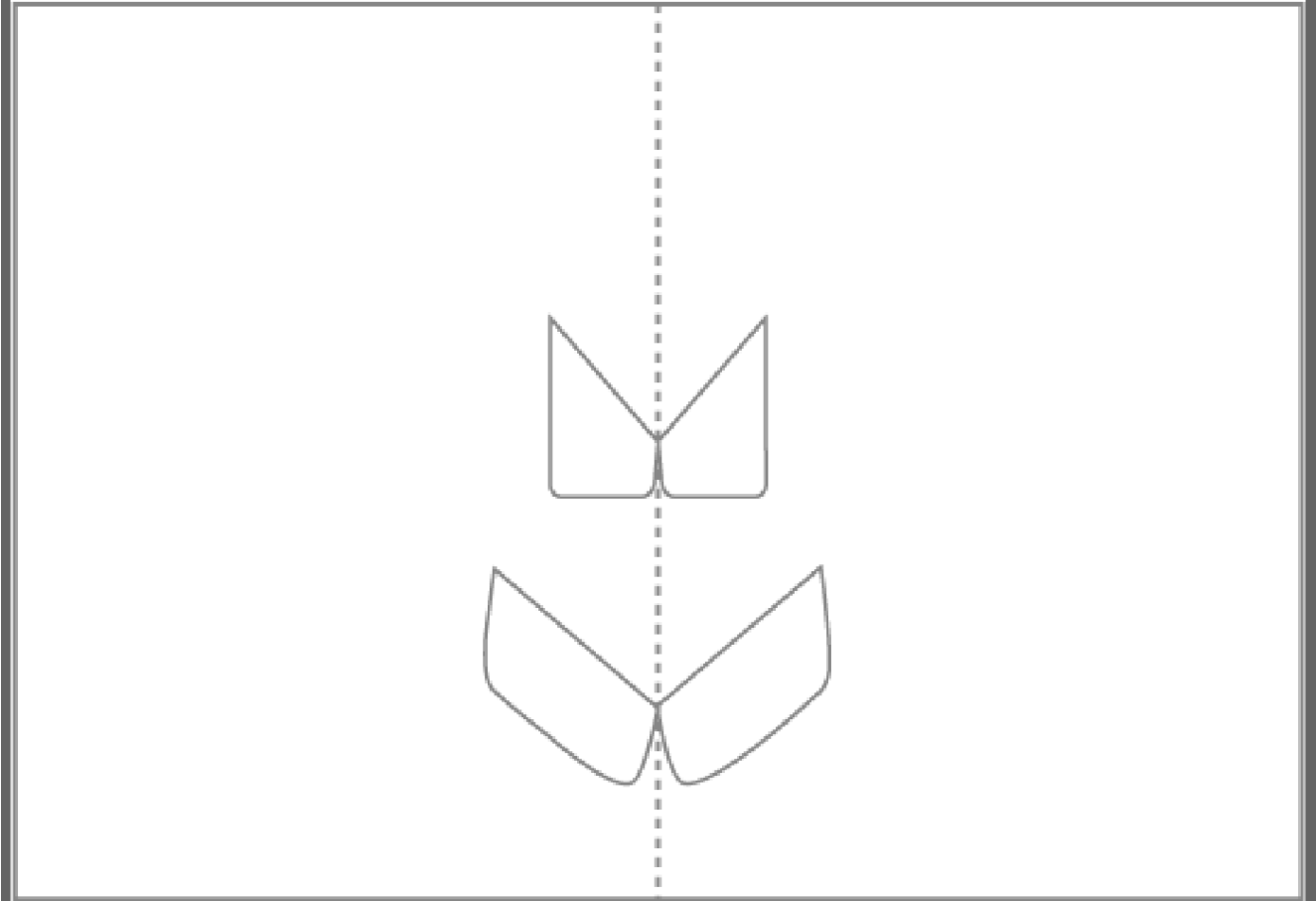
How to make your

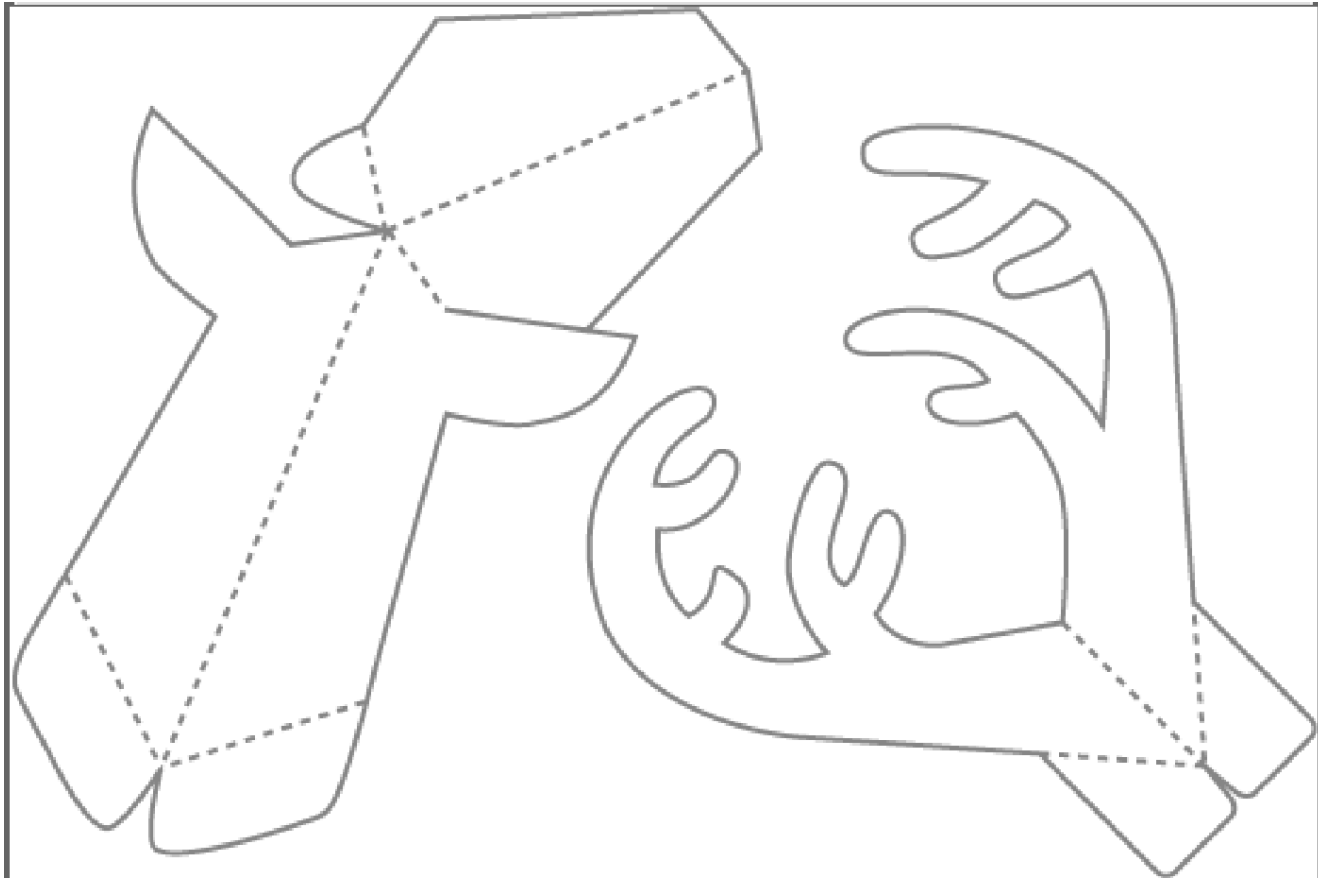
REINDEER POP-UP



Remember to...

- Cut the solid thick black lines
- Fold the dotted black lines







Step 1: Take hold of the antler piece and fold both sides away from you so the center dotted line comes up towards you. Crease well.



Step 2: Take hold of the small right tab at the bottom of the antler piece...



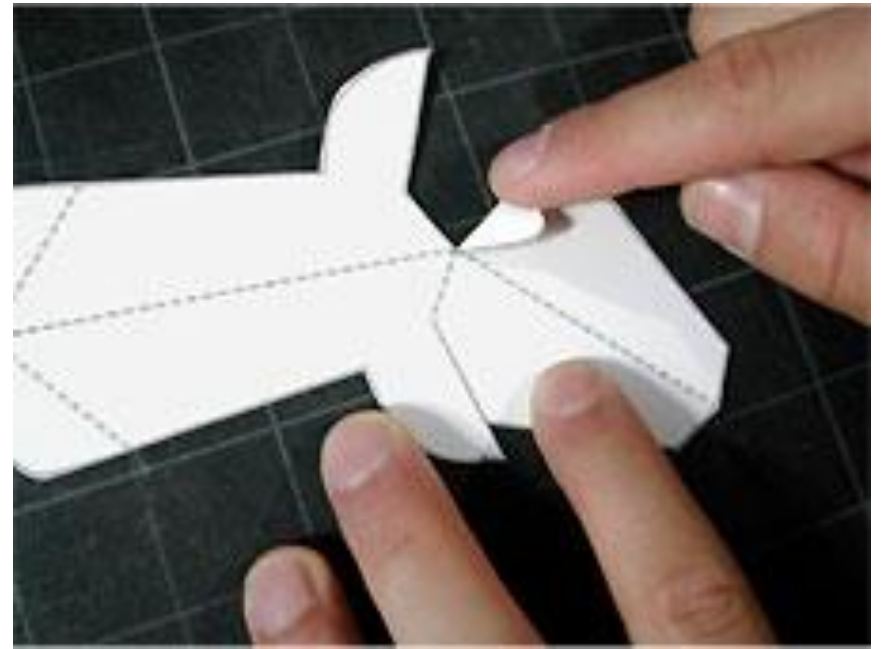
Step 3: ...and fold it up, creasing well. Release the tab and put it back into its original position. Repeat Steps 8 and 9 with the left tab.



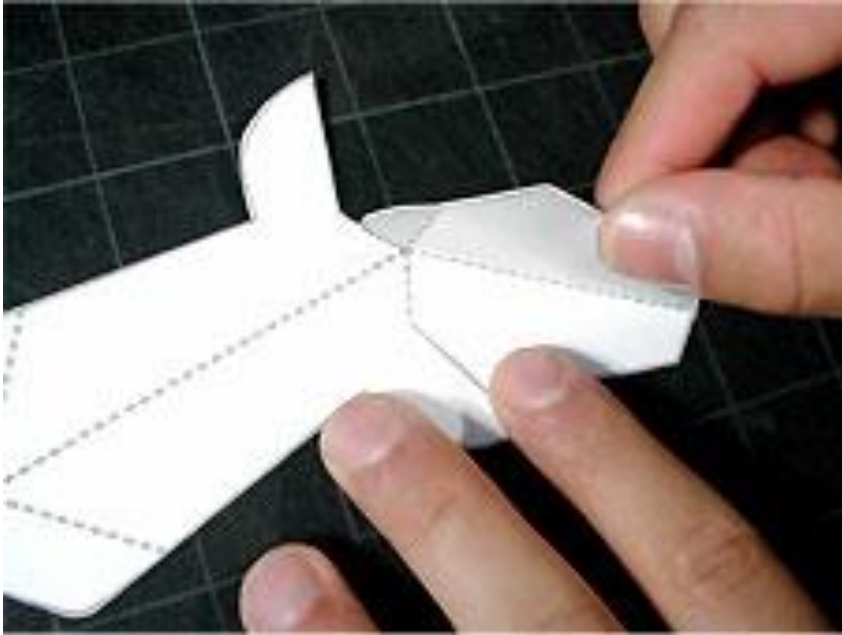
Step 4: This is how the antler piece should now look, with the center dotted line coming up towards you. Set the antlers aside.



Step 5: Place the reindeer's head on a flat surface and take hold of the small tab at the top...



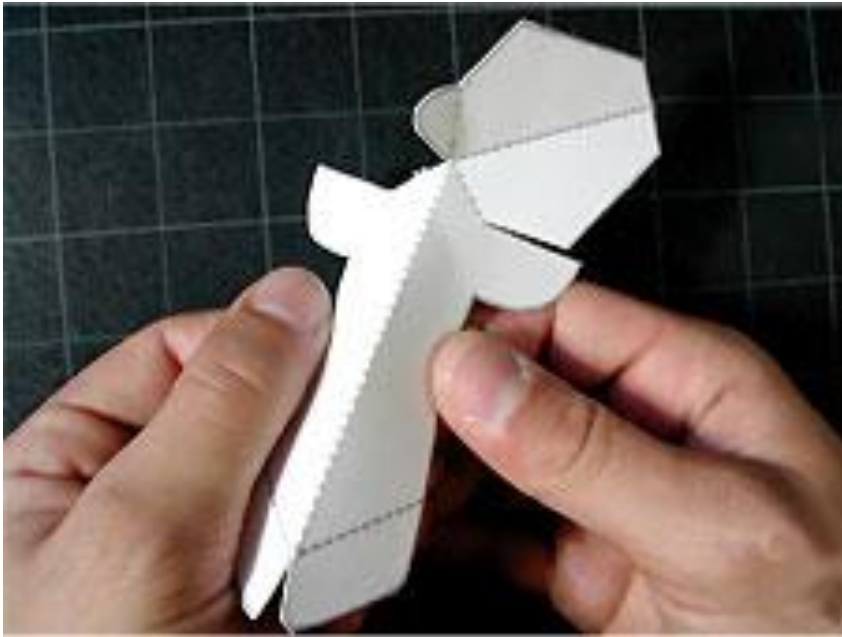
Step 6: ... and fold it back against the head, creasing well. Release the tab and put it back into its original position.



Step 7: Take hold of the right side of the reindeer's head and fold it over to the left, creasing it well. Return the right side to its original position.



Step 8: Take hold of the head and fold it down towards the body, creasing well. Return the head to its original position.



Step 9: Take hold of the reindeer's body and fold both sides away from you so the centre dotted line comes up towards you. Crease well.



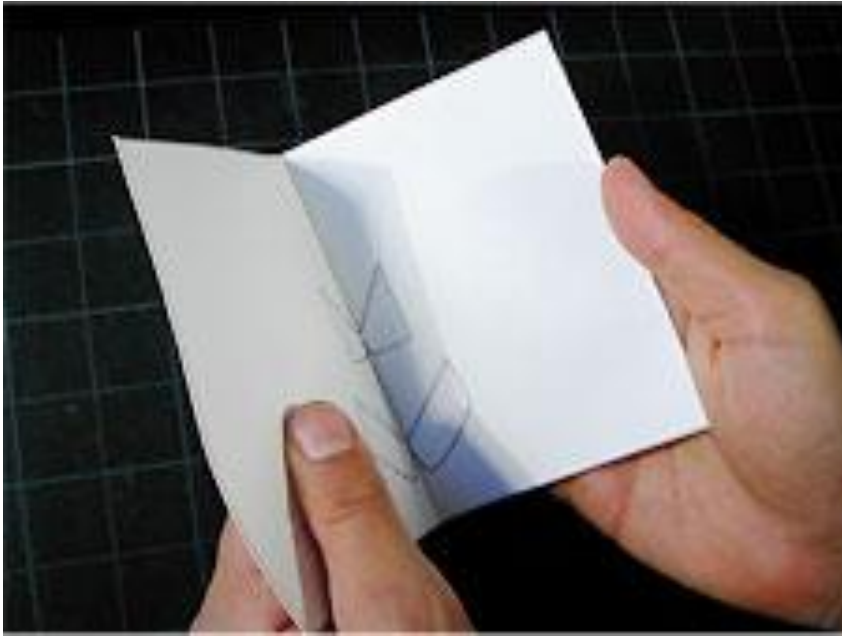
Step 10: Fold up the small right tab at the bottom of the reindeer's body and crease well. Return the tab to its original position. Fold up the left tab, crease and return to its original position.



Step 11: Apply a small amount of glue to the tab at the top of the reindeer's head.



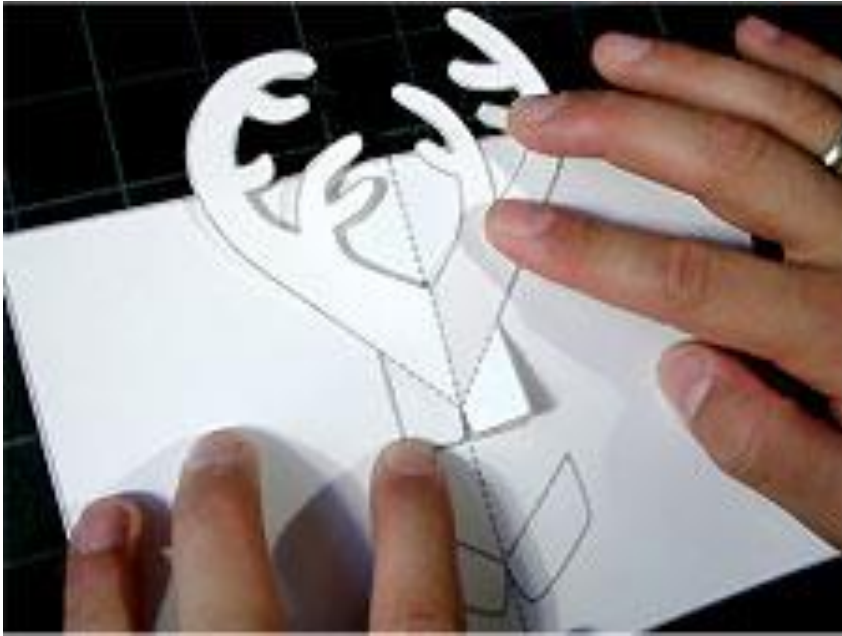
Step 12: Fold the tab up and over to the back of the reindeer's body and press together until the glue dries.



Step 13: Take the card and fold in half along the centre dotted line, creasing well.



Step 14: Turn the antlers over so no dotted lines are visible. Apply a small amount of glue to each tab at the bottom.



Step 15: Turn the antlers back over so the dotted lines are visible. Using the guides on the card, align the antlers and press down into position allowing the glue to dry (be patient). The antlers should lay perfectly flat on the card.



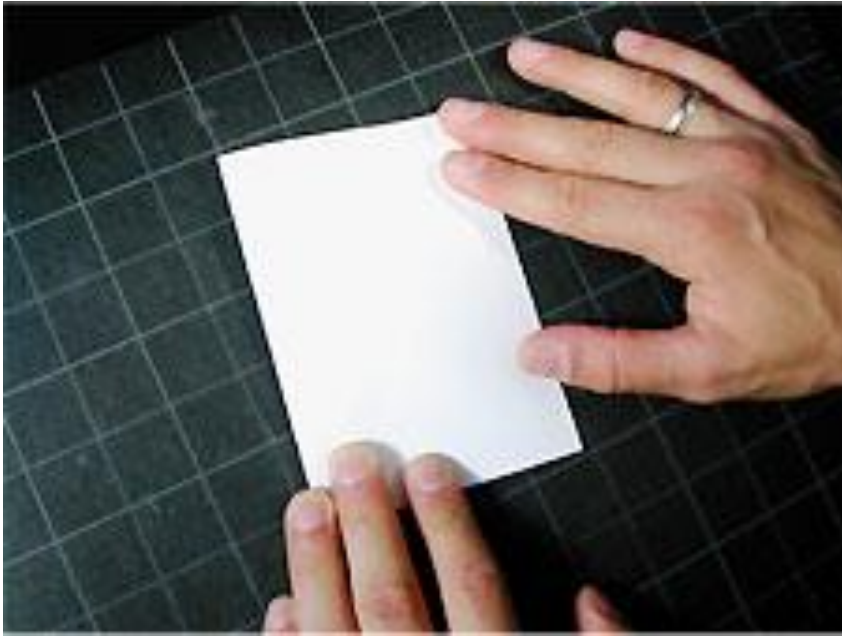
Step 16: Turn the reindeer's body over so no dotted lines are visible and apply a small amount of glue to each tab at the bottom.



Step 17: Turn the reindeer's body back over so the dotted lines are visible. Using the guides on the card, align the body and press down into position allowing the glue to dry (be patient).



Step 18: After the glue has dried, carefully begin to close the card. If the pieces need a little assistance folding back into the card, use your fingers to help them.



Step 19: Close the card completely.



Step 20: Your pop-up reindeer is ready to decorate! Happy Holidays!