


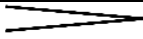
# Year 7 revision booklet 2020



Woodkirk Academy Music Department

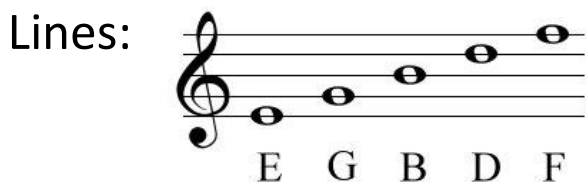
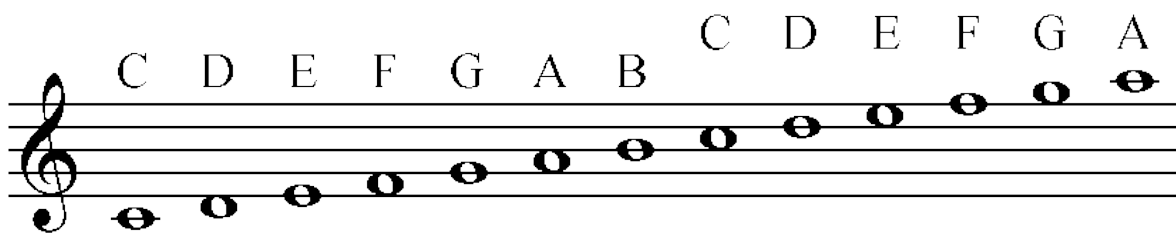
Name \_\_\_\_\_

Form \_\_\_\_\_

Dynamics	How loud or quiet the music is	
Key Word	Symbol	Definition
Pianissimo	pp	Very Quiet
Piano	p	Quiet
Forte	f	Loud
Fortissimo	ff	Very Loud
Mezzo Piano	mp	Moderately Quiet
Mezzo Forte	mf	Moderately Loud
Crescendo		Gets louder
Diminuendo		Get quieter

Tempo	How fast or slow the music is
Keyword	Definition
Largo	Slow
Moderato	Medium
Allegro	Fast

### Notes on the treble clef



# The Orchestra

Family	Instruments in that family highest – lowest
Strings	Violin, Viola, Cello, Double Bass + Harp
Woodwind	Flute, Oboe, Clarinet, Bassoon
Brass	Trumpet, French Horn, Trombone, Tuba
Percussion	Bass Drum, Snare Drum, Cymbals, Triangle, Timpani, Xylophone
Conductor	The leader of the Orchestra

What they look like!




# Brass Family



# Percussion



# Pentatonic Music

Keyword	Definition
Pentatonic	Music that uses 5 notes
Scale	A series on notes in music
Staff Notation	Drawing the notes on the music stave
Melody	The tune
Drone	A long sustained note
Pitch	How high or Low the music is
Treble Clef	Used to read high notes in music 
Accompaniment	The music behind the melody




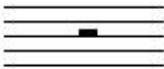

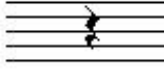

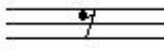
# Time Signatures

The number of beats in each bar,

typical time signatures are:

**4** — How many beats in a bar  
**4** — Note value for each beat

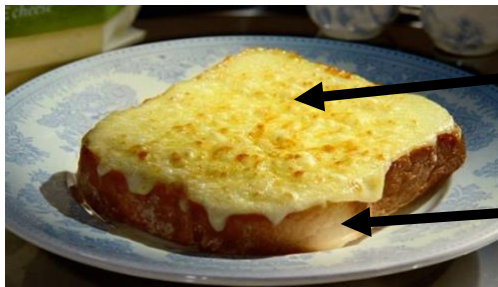
**2** **3** **4**  
**4** **4** **4**

Name	Note	Rest	Length
Semibreve			4 beats
Minim			2 beats
Crotchet			1 beat
Quaver			1/2 beat

# Form and structure

## Binary Form

Section A followed by section B, or... cheese on toast



Section B is the cheese

Section A is the toast

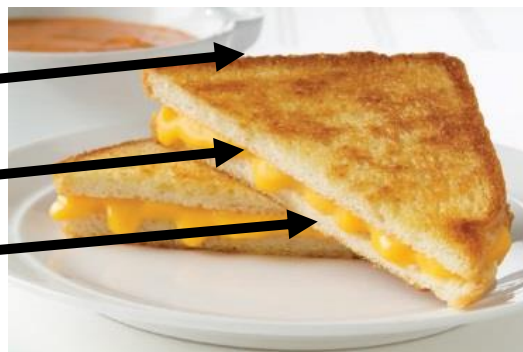
## Ternary Form

Section A followed by section B, then section A is repeated, or... cheese toasty

Section A is the toast

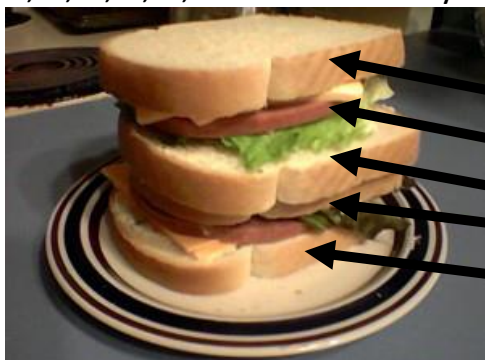
Section B is the cheese

Section A is the toast



## Rondo Form

Section A is repeated and always sandwiches a NEW section e,g, A, B, A, C, A, etc... or... Scooby Doo Sandwich



Section A

Section B

Section A

Section C

Section A

# Pachelbel's Canon

## Week 1: Structure

What is the structure of the piece? **Canon – Each instrument enters one at a time to create layers**

Can you describe the bass part? It is a **Ground Bass**

Other facts The **Ground Bass** played on a cello and Harpsichord

## Week 2: Melody

How would you describe the melody: A mixture of **scalic** (steps) and leaps (**triadic**)

Other facts Line A is all **scalic** (steps)  
Line B is mostly **scalic** (steps)  
Line C is mainly **triadic**  
Line D has larger **leaps**.  
The melody has intervals of 2<sup>nds</sup> 3<sup>rds</sup> 5<sup>ths</sup> 6<sup>ths</sup> and octaves.

## Week 3: Instruments and Rhythm

What instruments are used in this song? 3 Violins, Cello and Harpsichord

What is the tempo of the song? The tempo of the song is **Largo** (slow)

How many beats are in a bar? There are 4 beats in a bar

Other facts In our recording, the string instruments use the **Pizzicato** (Plucked) and **Arco** (with a Bow) techniques.  
The Piece was written during the **Baroque** period of music

#### Week 4: Texture and Harmony

What is the tonality of the piece? The piece is in **D major** (Our class version is C major though)

How would you describe the texture of this piece? The texture is Canon

What other songs use this chord progression? Basket Case by Green Day. Don't Look Back in Anger by Oasis.

#### Week 5: Context

When was this piece of music written? 1684

Why was this piece written? No one really knows

What instrument did Pachelbel play? He played the Organ

Roughly how many pieces did Pachelbel write in his life time? He wrote about 500 pieces

Other facts Pachelbel's Canon is mostly used at weddings now.