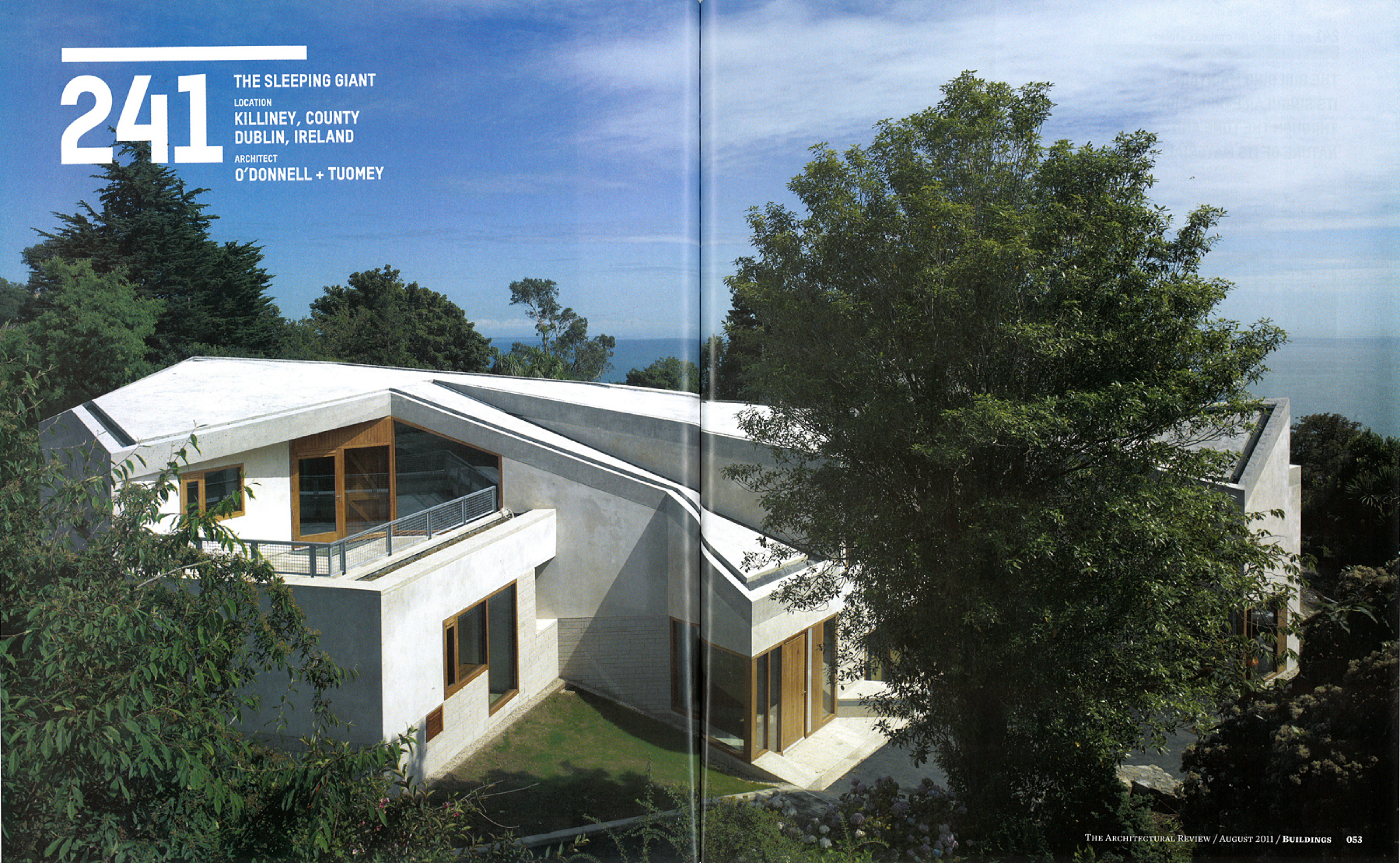


241

THE SLEEPING GIANT

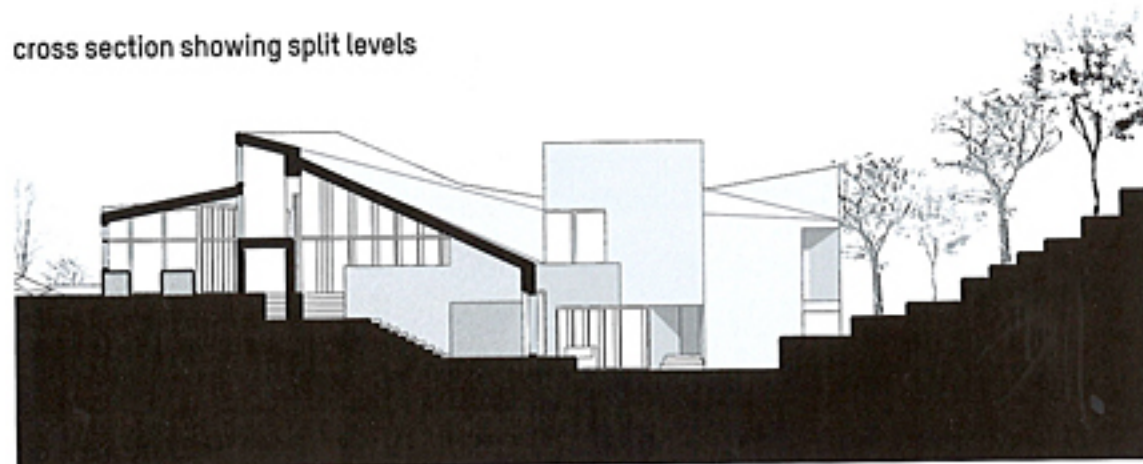
LOCATION
KILLINEY, COUNTY
DUBLIN, IRELAND

ARCHITECT
O'DONNELL + TUOMEY



THE BUILDING MAINTAINS ITS SINGULAR EXPRESSION THROUGH THE TONE AND NATURE OF ITS MATERIALITY

cross section showing split levels



Dubbed 'The Sleeping Giant' by its architects, this enormous house is situated high on a hill in Killiney, County Dublin. Unlike the 1950s house it replaced, it takes advantage of southerly views towards Dublin Bay and the Sugarloaf. In contrast to the more conventional semi-detached homes that line the approach road, O'Donnell + Tuomey's project is far more of its place, taking on the character and figure of a rocky outcrop and conceived as part of the landscape. The bedroom house hunkers down more harmoniously into its topography, in section occupying a series of split levels, each directly related to the ground outside, and in plan buckling and skewing to take full advantage of views and daylight, while negotiating its place between rocks and established trees.

Despite the complexity in plan, the building maintains its singular expression through the tone and nature of its materiality, with a base of randomly coursed granite, upper storey of lime render and in-situ concrete folded roof. According to the architects, this was the most challenging part of the house, and appears as a concrete tent, exposed to the internal spaces and inspired by

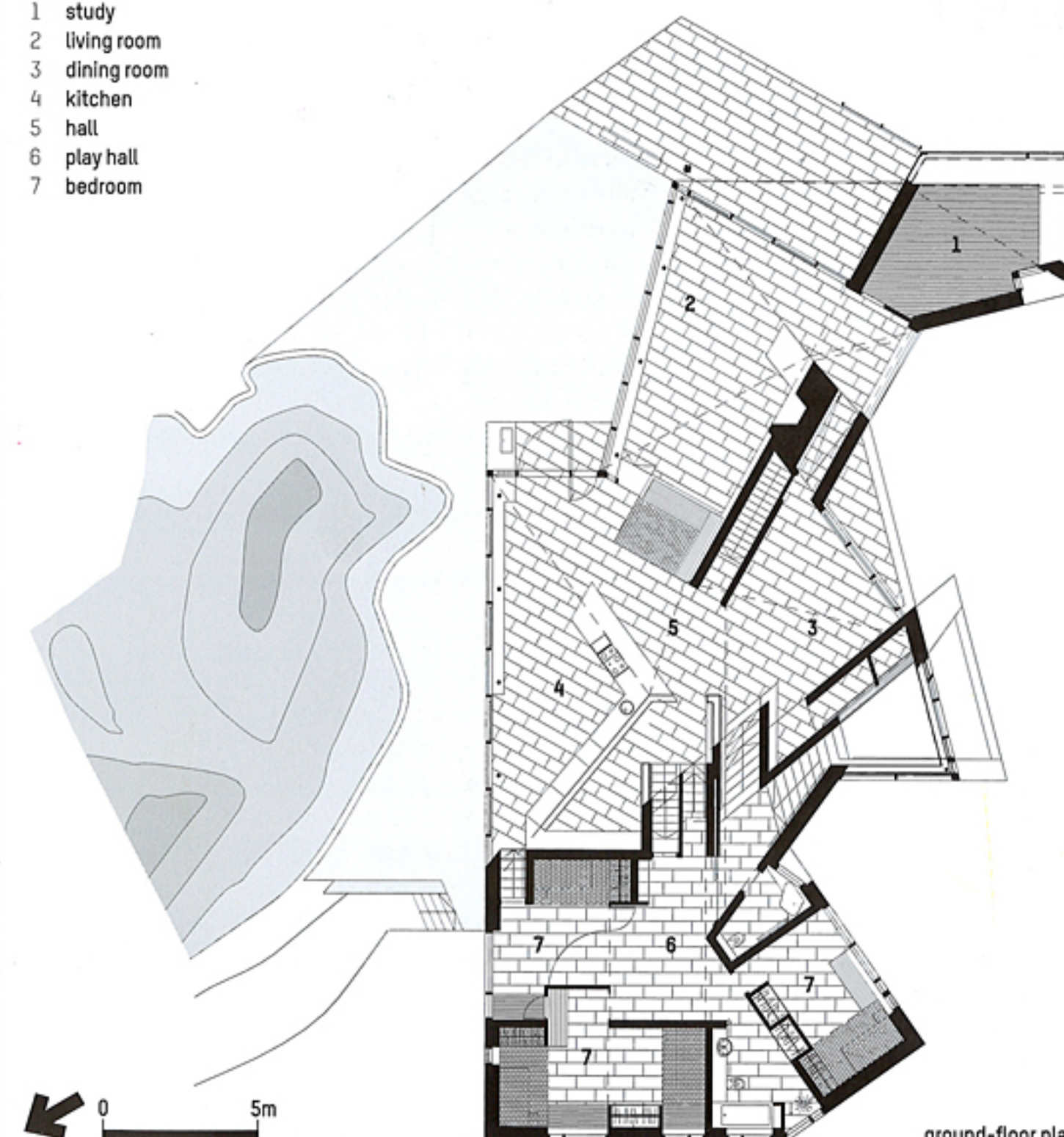
the formations of granite in the surrounding landscape. A special granite aggregate/sand mix was specified to unite the materiality of the building with its context, the surface sandblasted to expose the reflective mica in the granite that makes the concrete sparkle in the sunlight. Enveloping the internal spaces and endowing them with a cave-like ambience, the concrete is anchored by an exposed in-situ concrete chimney and rests on lines of slender steel columns. Externally, the overlooked roof is finished with a hand-applied stiff granite screed, which echoes the crease-lines in the cranked concrete structure below.

Alongside all this masonry, a dark stained iroko is used throughout the house for all joinery elements, including the large sections of timber that frame the fully glazed kitchen and living room walls that occupy the house's southern and eastern edges. It is along the elevations that the concrete ceiling appears most light, with its tilted angles emphasising the horizontal line of the sea horizon. Elsewhere the roof floats clear of the internal walls with a series of glazed clerestories allowing daylight and views to penetrate the house.



site plan

- 1 study
- 2 living room
- 3 dining room
- 4 kitchen
- 5 hall
- 6 play hall
- 7 bedroom



ground-floor plan

Previous page_ With long views towards Dublin Bay, the Sleeping Giant takes on the character of a large rocky outcrop
Left_ Internally this fragmented form is described as a concrete tent, draped over a series of complex internal volumes
Bottom left_ Stained iroko timber brings refinement to the robust masonry interiors, here framing distant views to the horizon beyond

ARCHITECT
O'Donnell + Tuomey,
Dublin, Ireland
STRUCTURAL ENGINEER
Downes Associates
PHOTOGRAPHS
Dennis Gilbert,
O'Donnell + Tuomey