

Central European University

O'Donnell + Tuomey

This is the first phase of a campus masterplan for the Central European University in Budapest, Hungary. The project changes the relationship of the university and the city.

Phase 1 provides a public face for the university, a new entrance on axis with the Danube, a library and learning café for citizens and students. The campus becomes integrated with the urban realm.

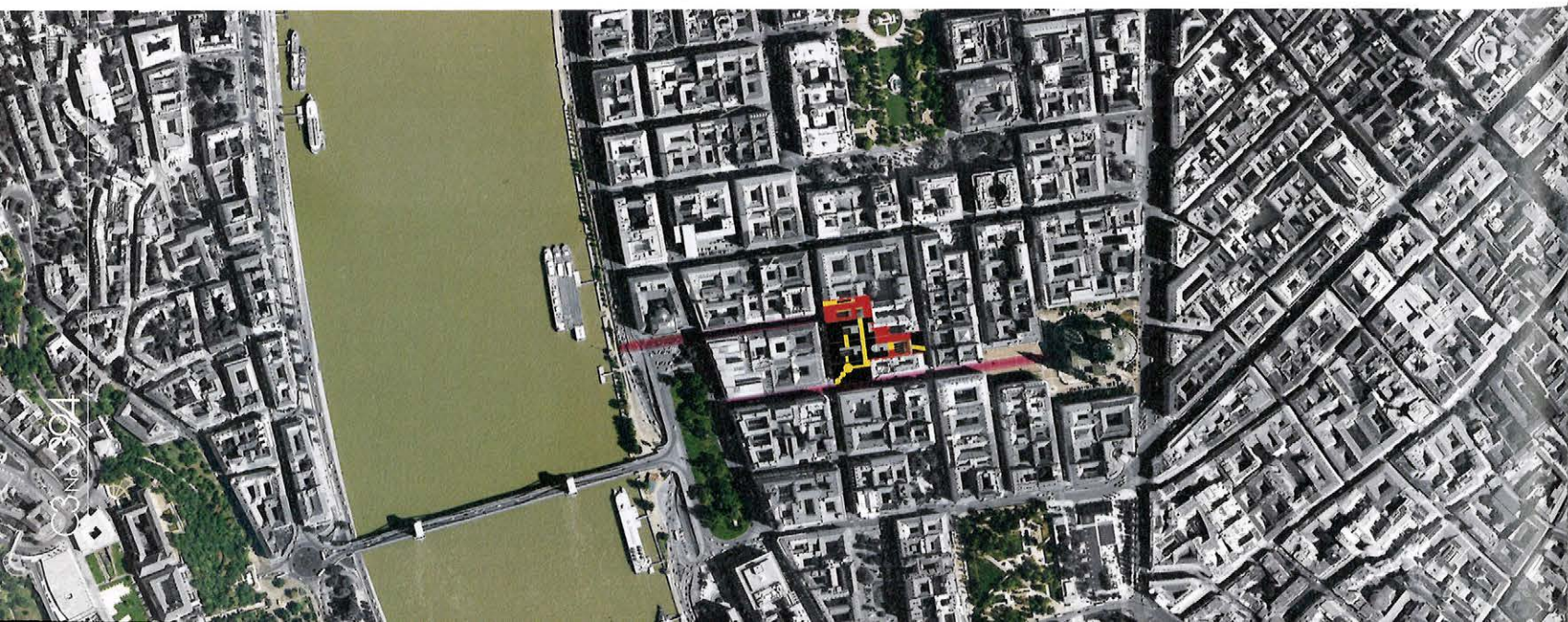
The brief was to design a new 35,000m² Campus on a World Heritage site in central Budapest, incorporating all University Departments and facilities. The scheme involves the radical transformation of five adjoining, previously disconnected, historic buildings and the construction of two new buildings.

Budapest is a city of courtyards and passageways. The streetscape is repetitive in plot dimension and only slightly varied in parapet height. The contemporary expression of the new building at Nador 15 is designed to be in sympathetic conversation with its neighbours. The limestone façade is locally sourced from the same quarry as most of the historic buildings in the city. This is the first new building to be built in recent times in this historically protected context. The existing CEU campus consisted of adjoining buildings, each with their own entrance, with minimal interconnectiv-

ity between them. The architects identified opportunities to intervene in this downtown urban block, to make what was a disconnected and disparate set of buildings into an open campus. The campus was transformed into a metaphorical crossroads by employing a process of selective subtraction and addition. By a carefully considered "surgical" strategy existing and new facilities are linked through a legible sequence of connected courtyards. The functional layout provides easy communication between interrelated adjacencies, clusters connected by social spaces, encouraging interaction and collaboration between academic departments.

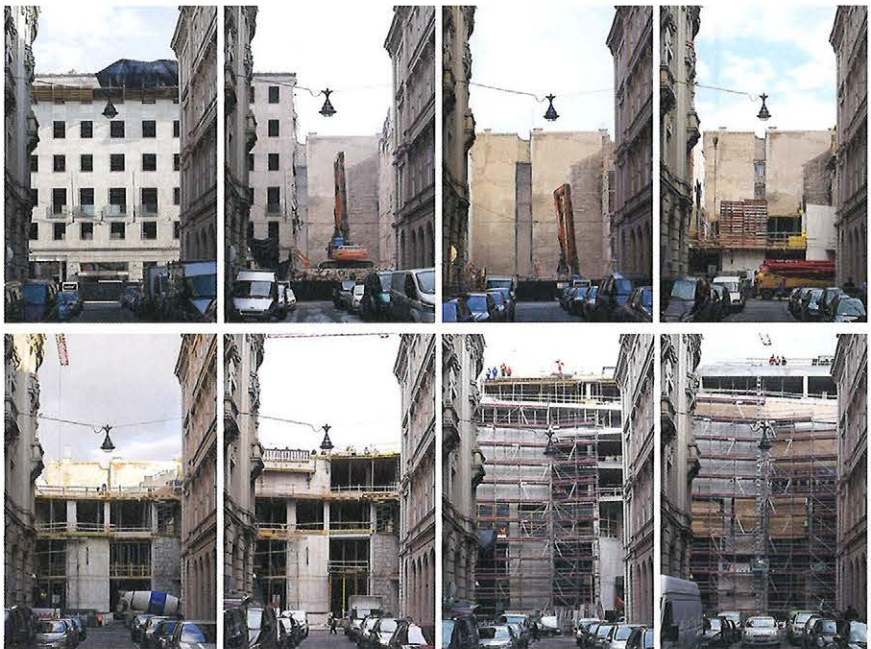
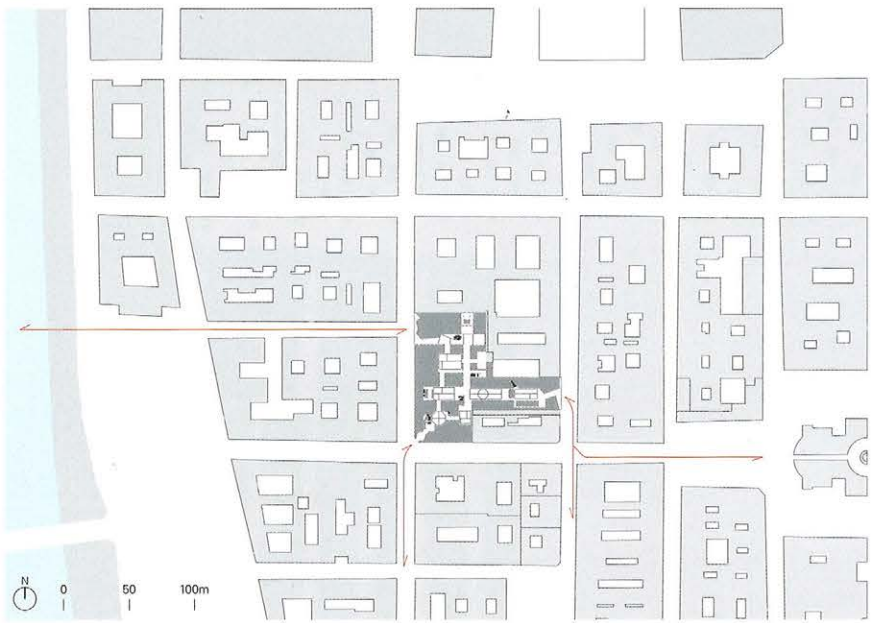
A phased strategy was proposed, making connections between existing courtyards, demolishing inefficient buildings and designing new buildings around a series of courts. Courtyards are roofed over to provide a tempered environment from the climatic extremes in winter and summer. The courtyards are the campus, providing circulation system and social space. Openings are cut through to provide visual connections. Flying staircases interconnect department offices to teaching spaces.

The new building on Nador Utca forms the main entrance to the University. It houses the library and learning commons

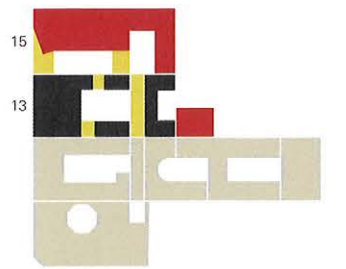
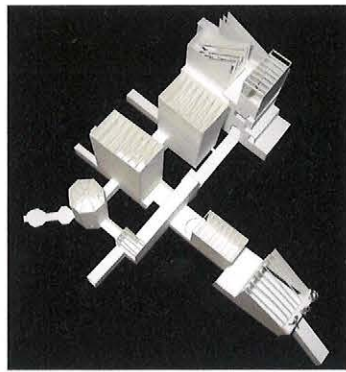




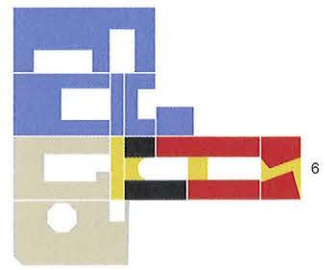
©Daniel Vogel (courtesy of the architect)



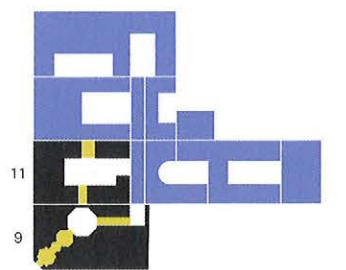
©Daniel Vogel (courtesy of the architect)



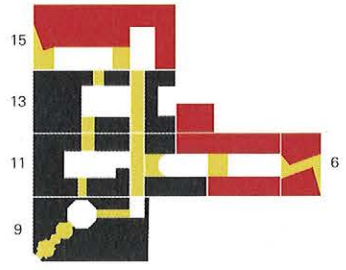
work phase 1



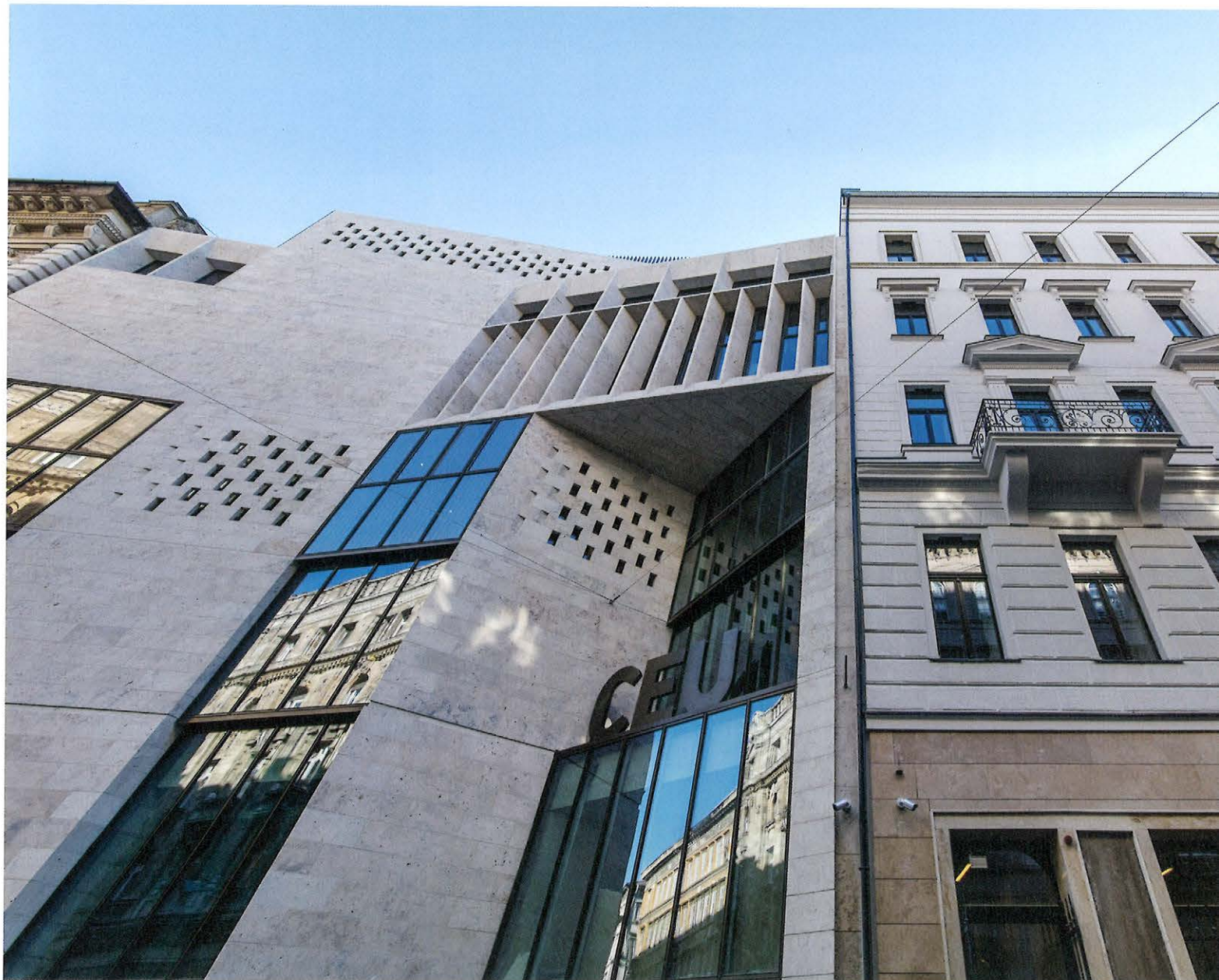
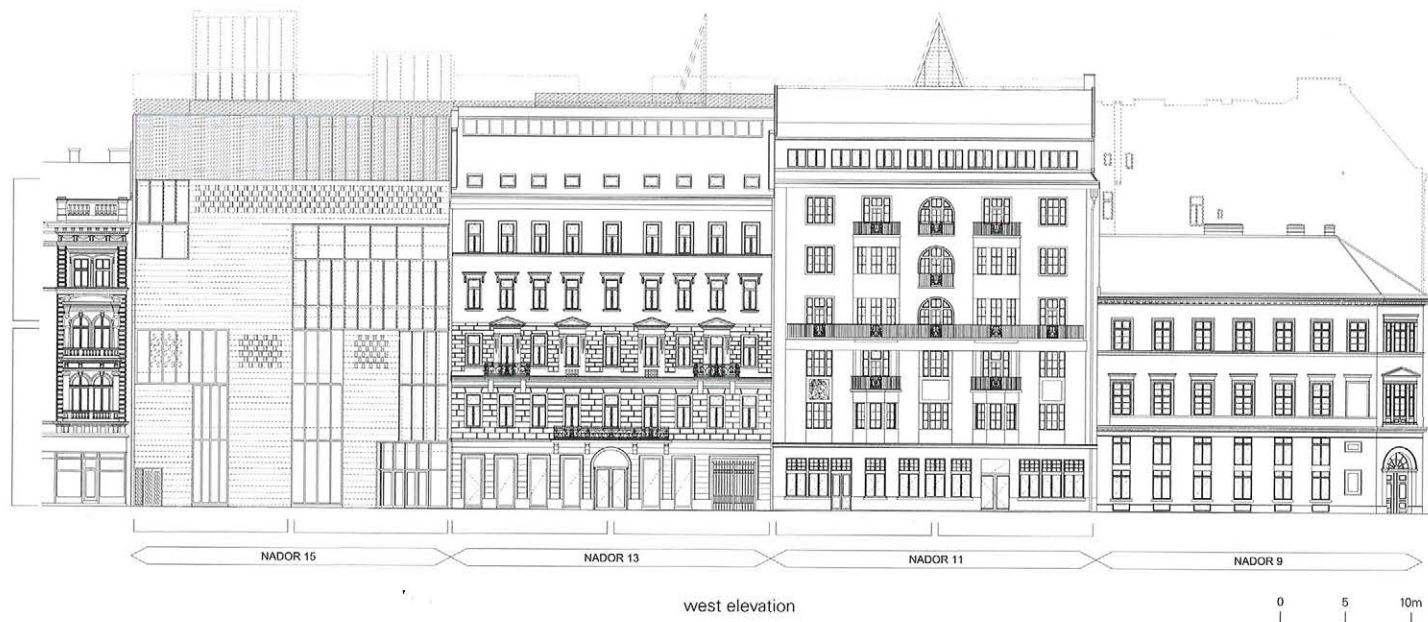
work phase 2

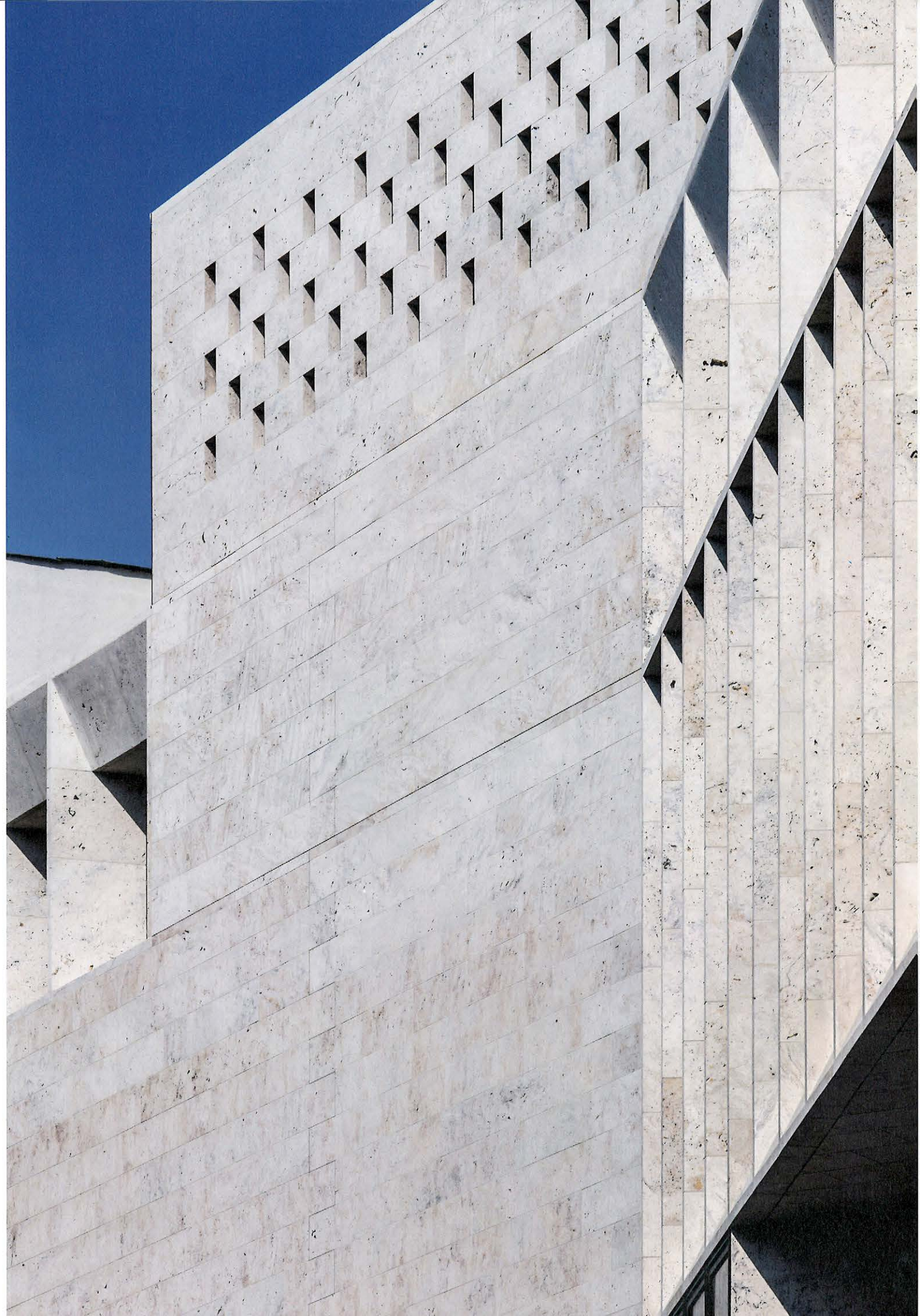


work phase 3

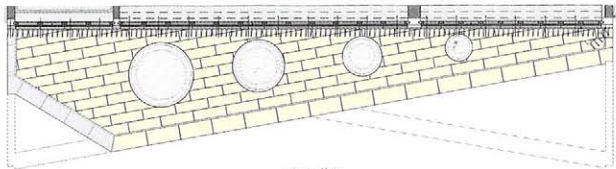


all parts connected

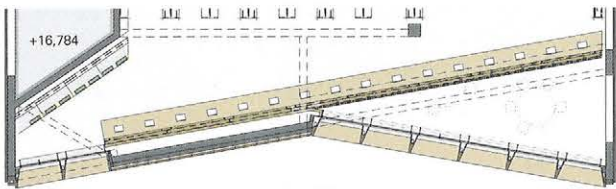




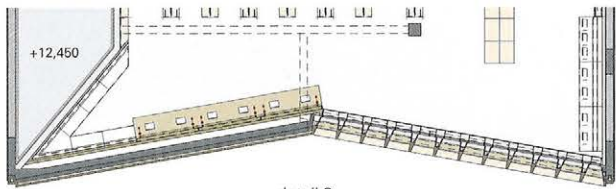
over a multi-purpose auditorium and conference facilities. The adjoining building is radically refurbished to provide a covered courtyard for public events, with a business school and teaching spaces at upper levels. A roof garden straddles both buildings to provide views over the city skyline. The palette of materials has been selected for their endurance and natural material qualities that give character to the overall appearance. Stone, timber, concrete, and steel form the fabric of the internal public spaces, with bespoke furniture used throughout the building. The new facades are constructed with local limestone, designed to emphasize the geometric quality of the building and continuing the tradition of solidity and permanence of the Budapest stone architecture.



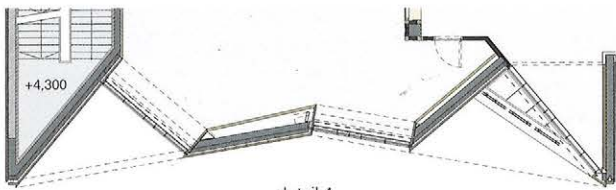
detail 1



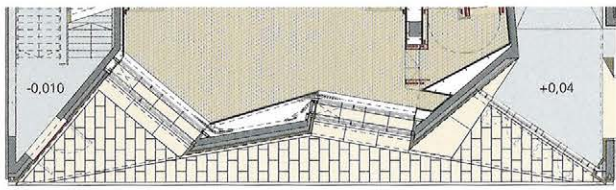
detail 2



detail 3

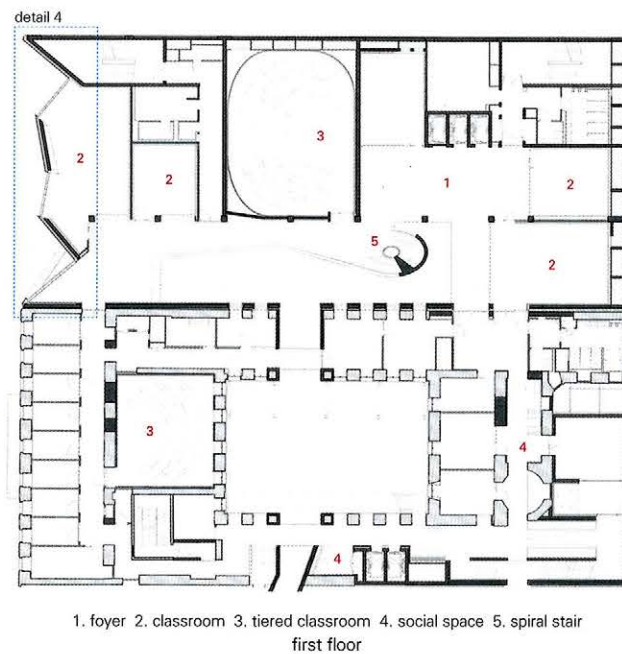
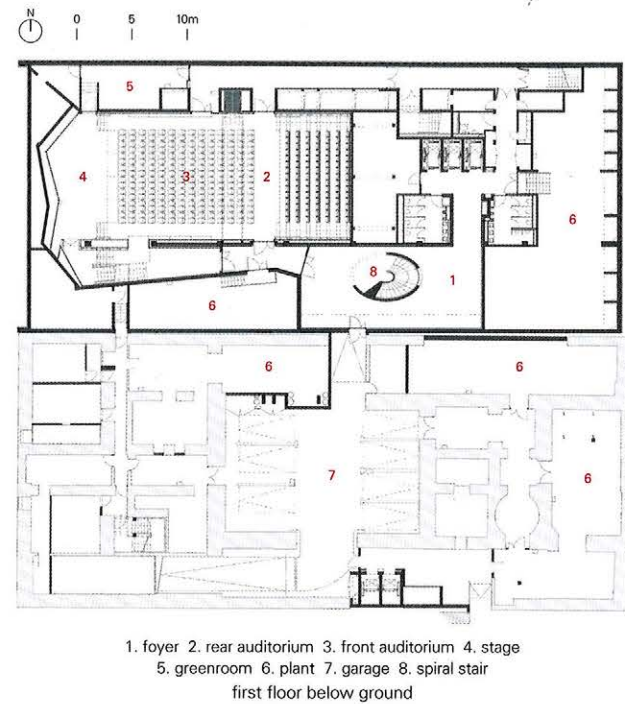
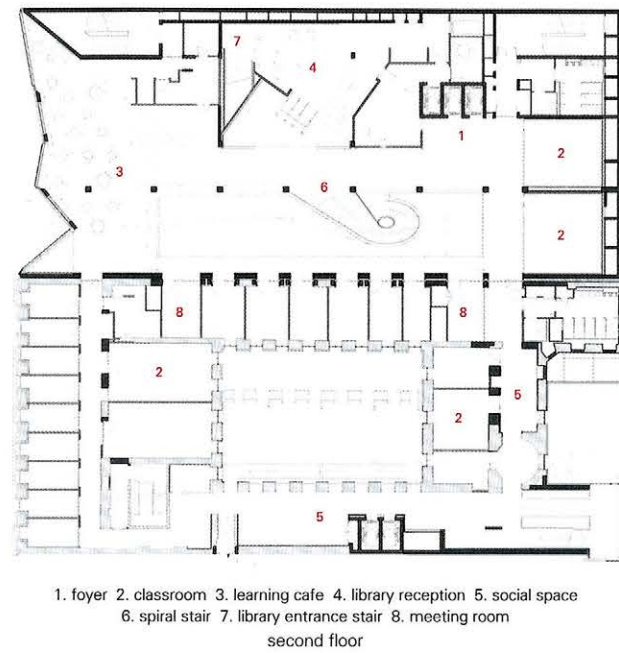
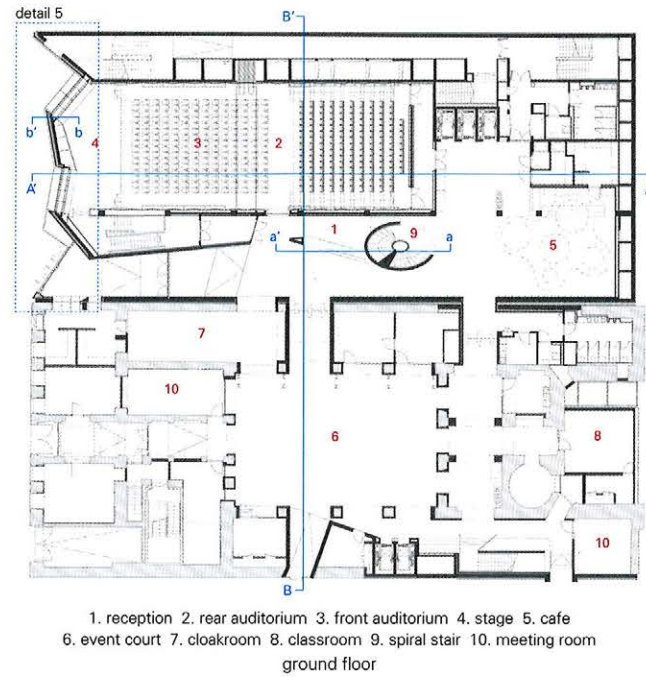


detail 4



detail 5





부다페스트 센트럴 유러피안 대학교

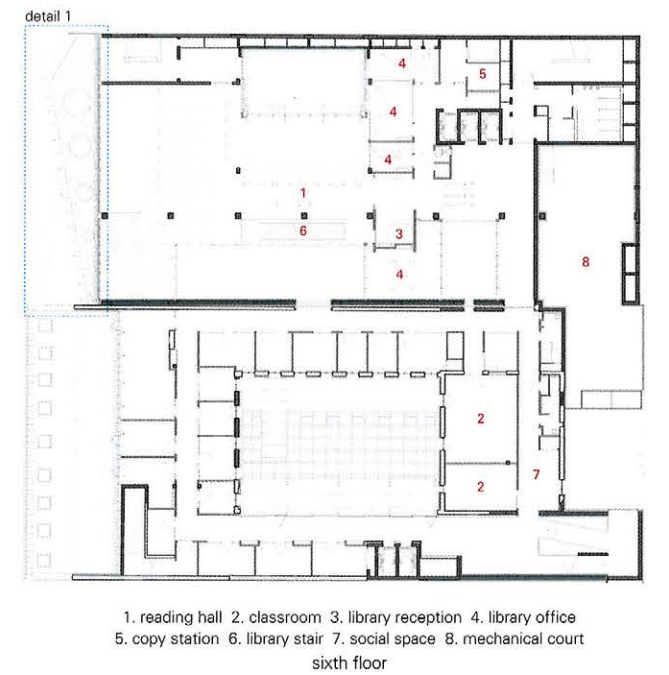
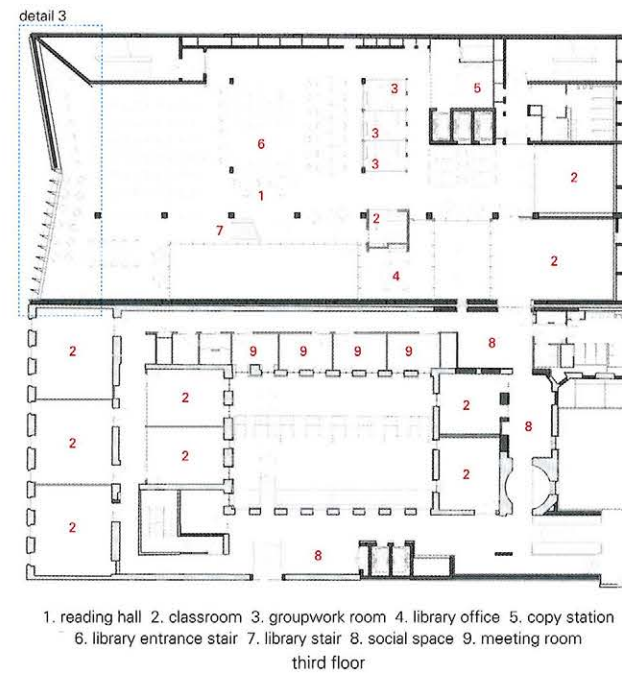
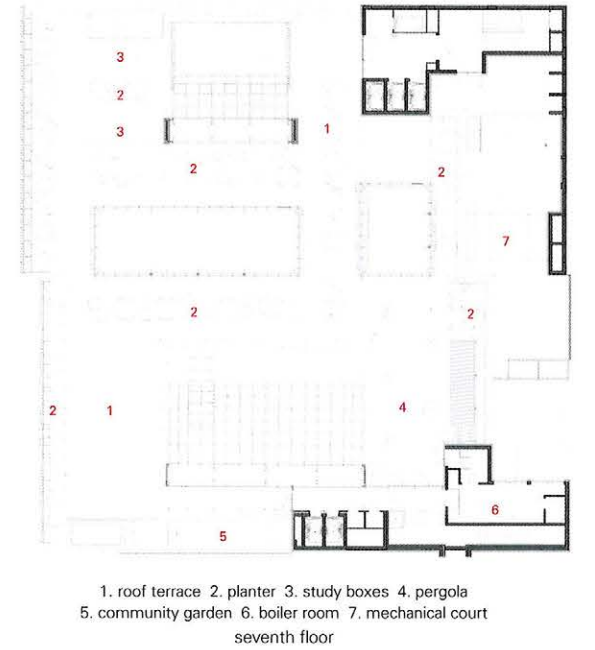
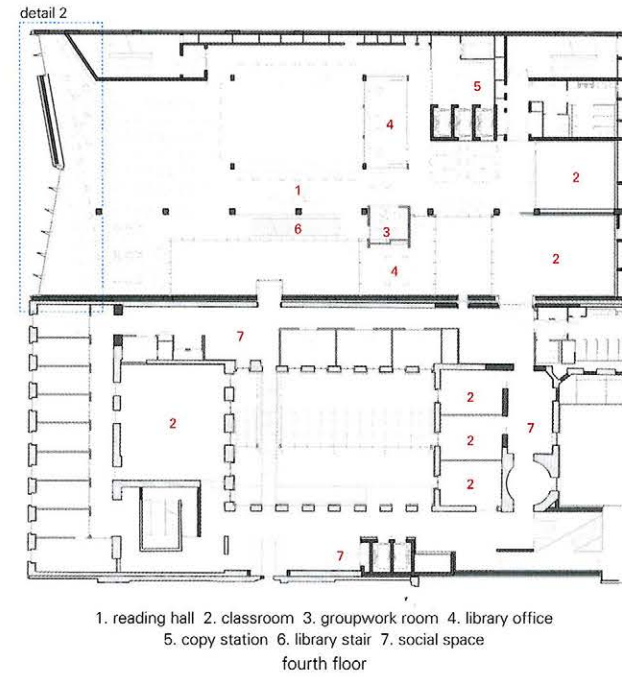
헝가리 부다페스트의 센트럴 유러피안 대학 캠퍼스 마스터플랜이 대학과 도시의 관계에 변화를 불러오고 있다. 성 스테판 대성당과 다뉴브강 사이 구시가지에 자리하는 캠퍼스의 마스터플랜은 총 3단계로 진행된다. 그 중 첫 단계로 대학의 새 얼굴이 될 정문이 다뉴브강을 향해 생겼고, 학생과 시민들이 함께 이용할 수 있는 도서관과 스터디 카페가 들어섰다. 이로써 대학 캠퍼스는 도시의 일부로 새롭게 태어났다.

목표는 세계 문화유산으로 지정된 부다페스트 중심부에 학과 건물과 편의 시설을 갖춘 35,000m² 규모의 캠퍼스를 조성하는 것이었다. 오랜 역사를 간직한 고풍스러운 건물 세 채에 두 채의 새 건물을 더해,

총 다섯 건물이 서로 연결되는 계획이다.

부다페스트 시가지에는 좁고 긴 골목이 얹혀 있고 건물 사이 사이에는 안뜰이 있다. 거리를 걷다 보면 벽과 난간의 높이만 조금씩 다를 뿐 골목 골목이 마치 반복되듯 비슷하다. 나도르 거리 15번지에 들어선 새 건물이 고풍스러운 거리 모습과 잘 어우러질 수 있도록 디자인에 특별히 신경을 썼다. 지역 채석장에서 공수한 석회석으로 파사드를 마감해, 오랜 시간 명맥을 이어와 이제는 문화유산으로 지정된 도시의 기존 건물들과 결을 같이 하고자 했다.

기존 캠퍼스 건물은 오래된 도시 사이에 다닥다닥 자리해 입구도 제각각이고 비좁은 연결 통로로 간신히 이어져 있었다. 건축가들은 연결 고리가 부족해 묘한 이질감만을 발하며 맞대 서 있던 옛 건물들을 개

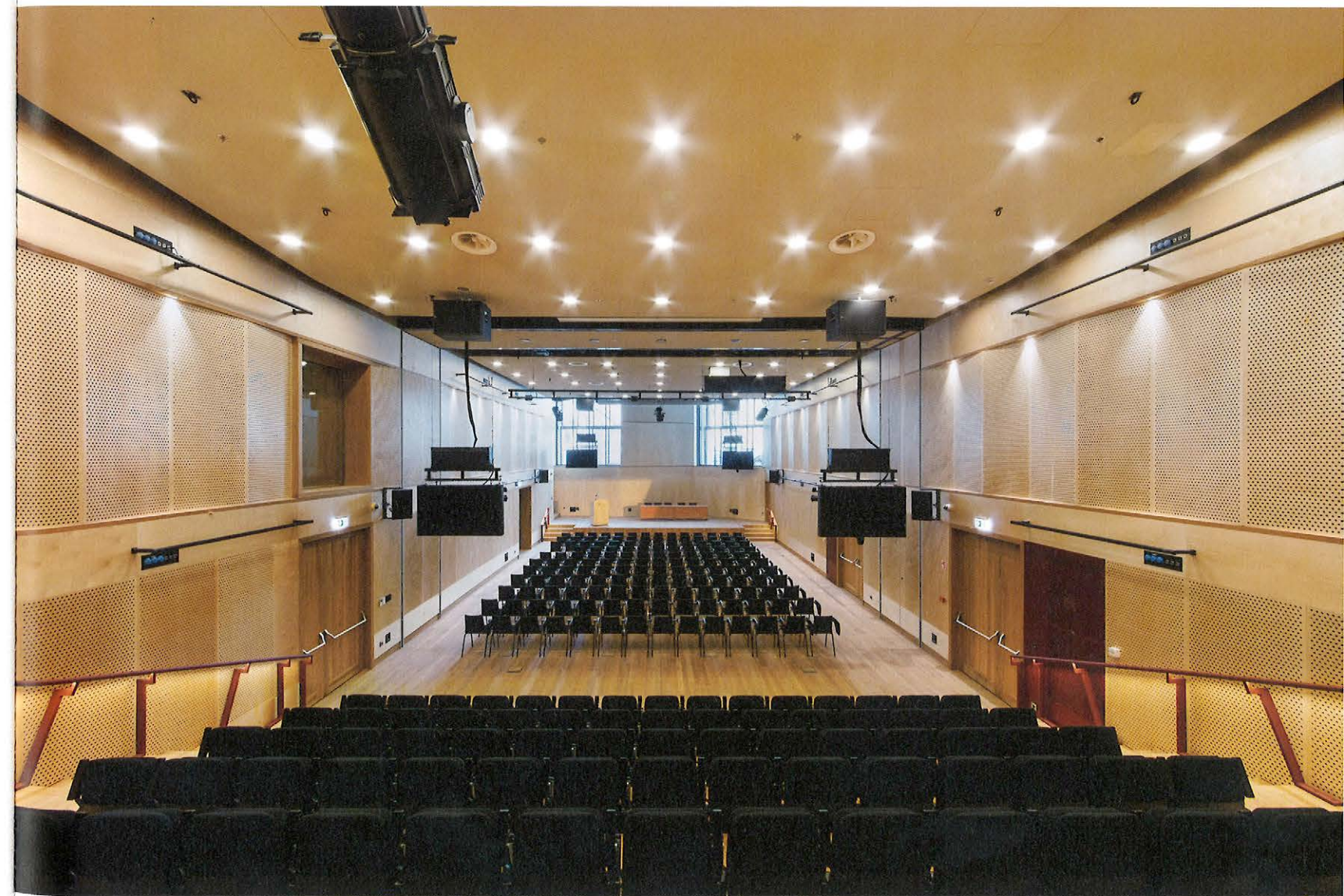


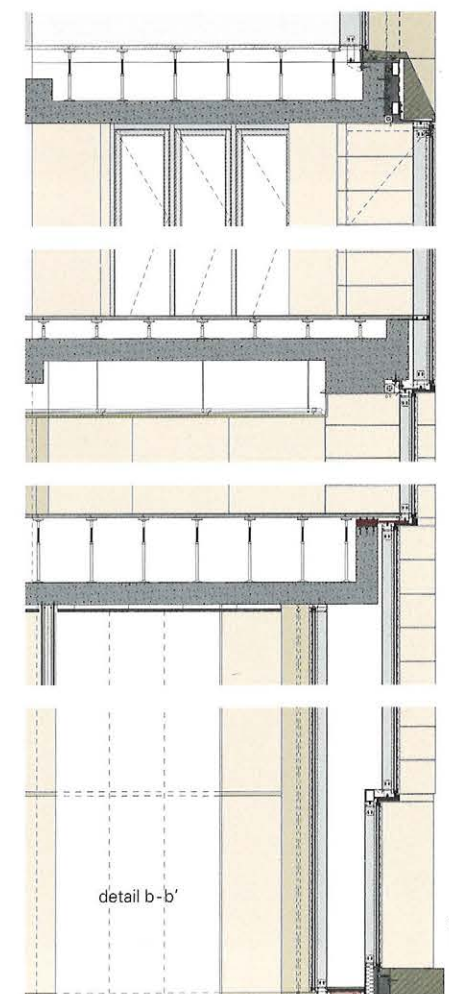
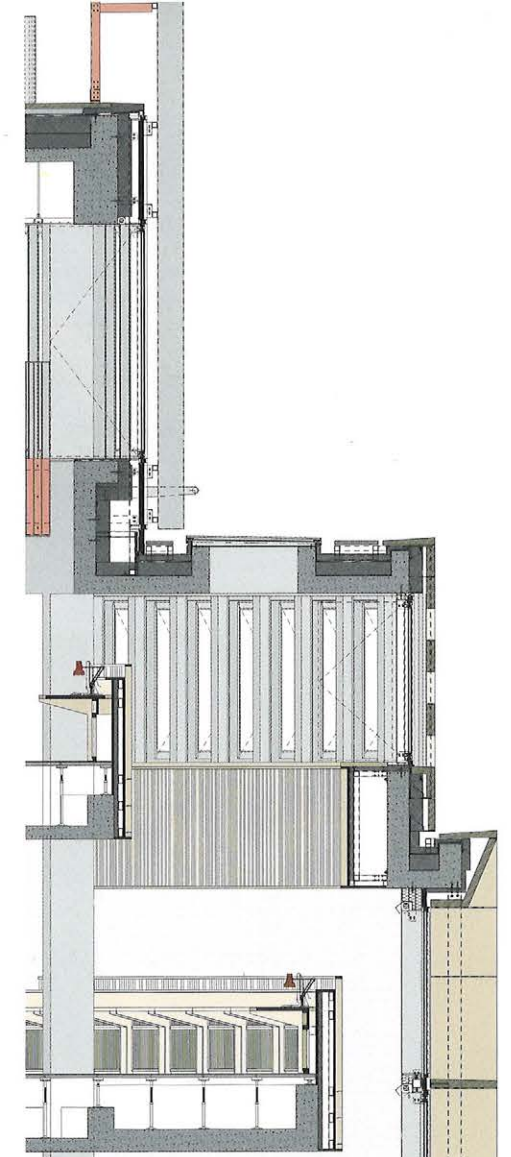
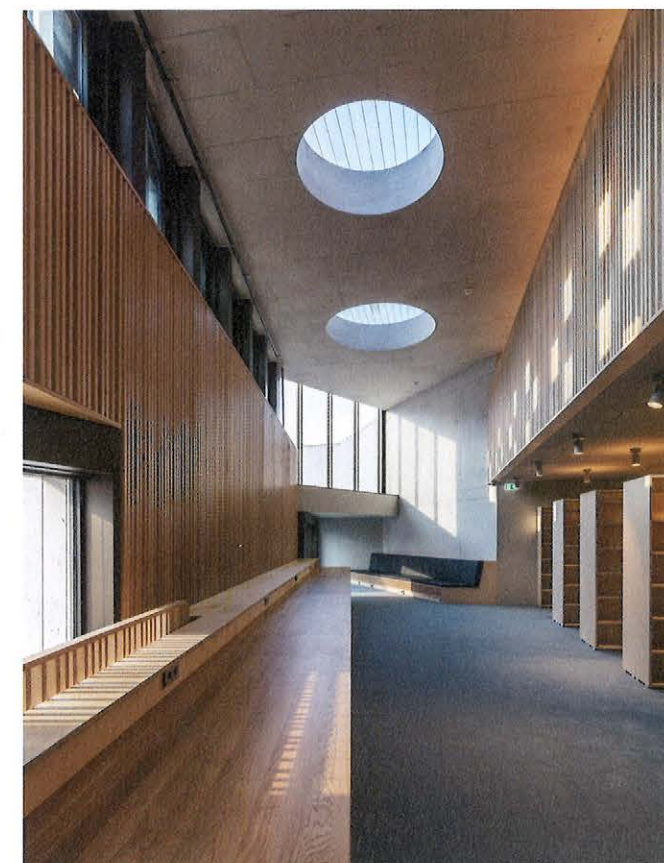
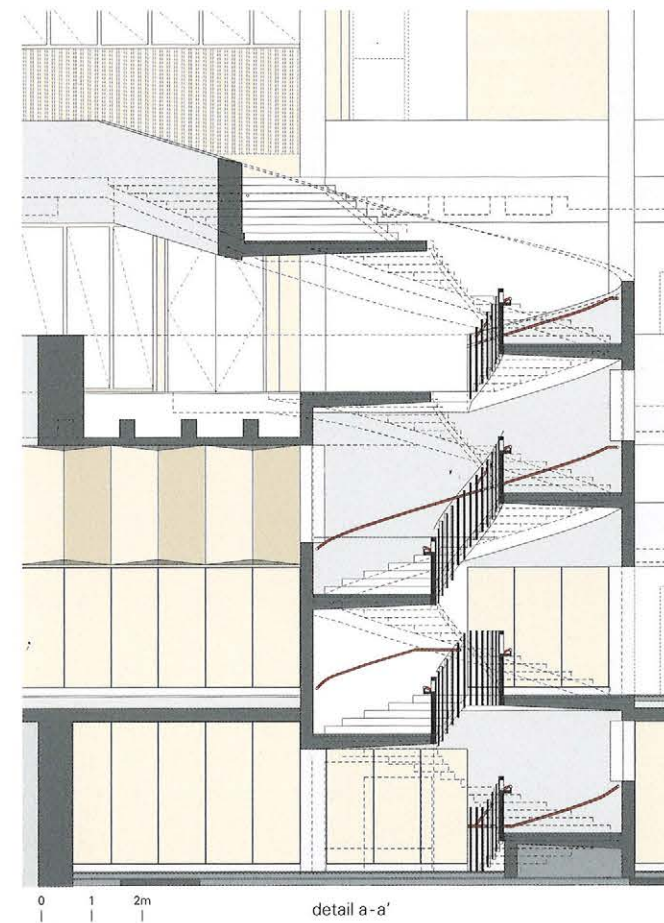
방형 캠퍼스로 만들어 도시 일부가 되도록 했다. 덜어내야 할 부분과 더해야 할 부분을 신중히 선택하여 독특한 매력을 지닌 캠퍼스로 탈바꿈시켰다. 마치 외과 수술을 하듯 비효율적이던 옛 건물을 철거하고 부지 내에 새 건물을 지어 기존 안뜰과 서로 연결하는 독특한 방법으로 기존 건물과 새 시설이 이어지도록 만들었다. 기능성을 염두두고 배치하여 학생들이 자유롭게 내부를 오가며, 공공장소에서 친목을 다짐은 물론, 학과 간 상호 작용과 협력을 이끌어내는 데 효과가 있다. 건축가는 겨울이나 여름처럼 온도 차가 극심한 계절에도 캠퍼스 내 활동이 자유로울 수 있도록 건물 위로 지붕을 씌웠다. 순환과 만남이 거리낌 없이 이루어지는 내부 동선 덕에 야외 캠퍼스가 부럽지 않다. 군데군데 난 창문을 통해 시선이 자유로이 오가며, 공중 계단으로는 학

과 사무실과 강의실이 편리하게 연결된다.

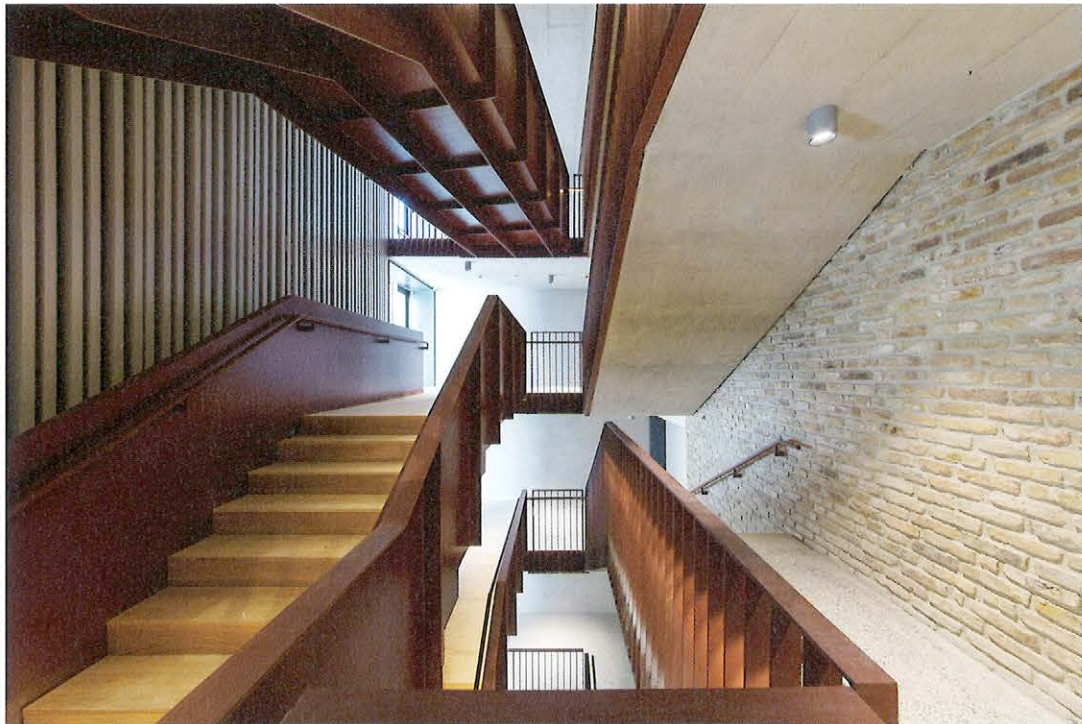
새 건물은 대학 정문의 기능을 겸한다. 이곳에는 도서관과 다목적 강당, 회의 시설이 갖춰져 있다. 큰 공사를 거친 바로 옆 건물에는 날씨와 상관 없이 공공 행사를 열 수 있도록 천장을 덮었고, 2층에는 경영대학원과 강의실을 두었다. 두 건물 모두 부다페스트의 전경을 감상할 수 있는 옥상 정원을 갖추었다.

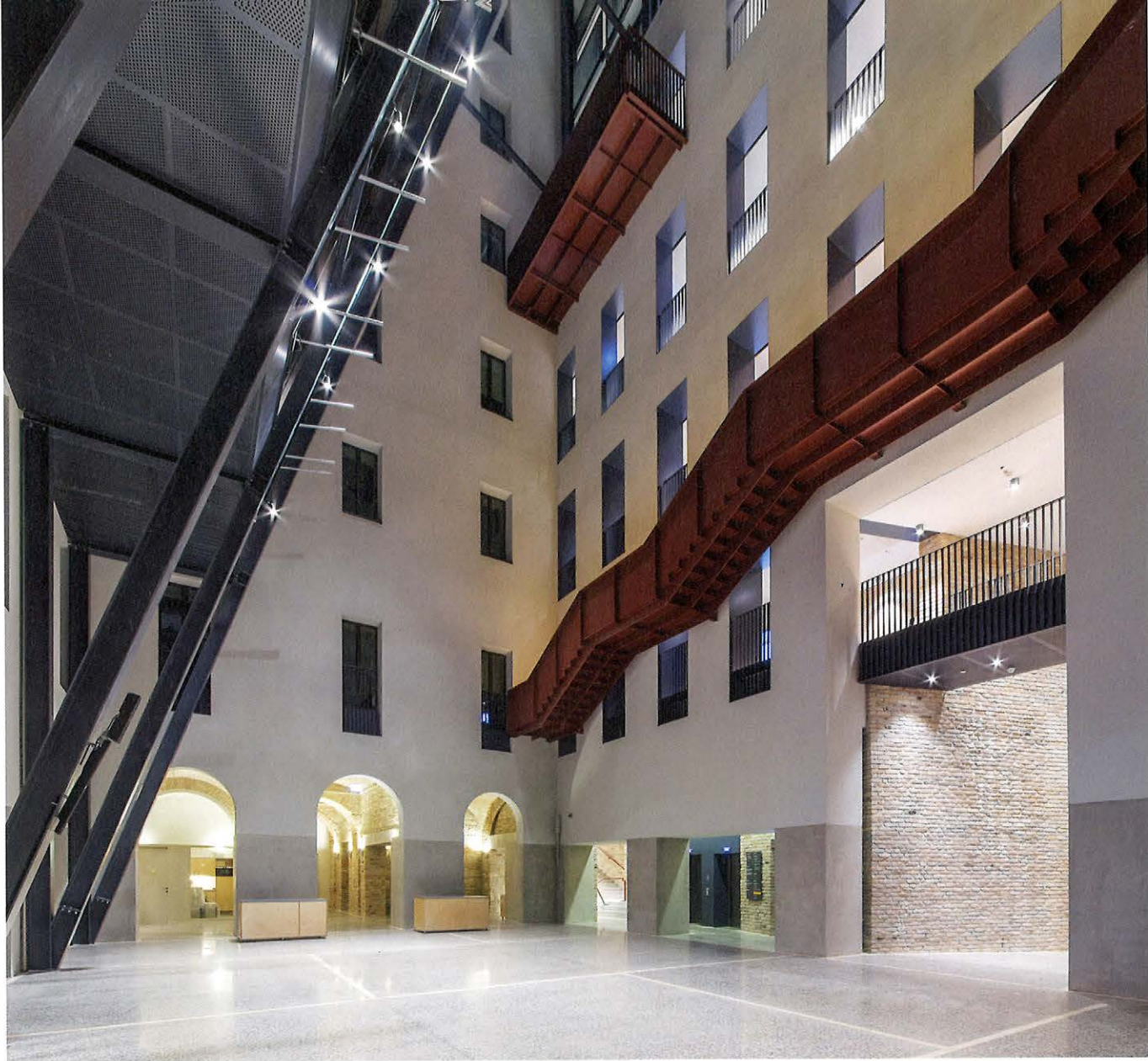
건물 본연의 특성과 함께 내구성 또한 고려하여 선택한 재료들은 건물 외관에 독특한 개성을 부여한다. 석재와 목재, 콘크리트, 금속 재료가 맞춤 가구와 어우러져 공공 공간을 이룬다. 지역에서 난 석회석으로 만든 파사드는 부다페스트 전통 석조 건물의 견고함과 영속성을 계승함은 물론, 건물의 기하학적 형태를 더욱 강조한다.





Project: Central European University / Location: Nador u. 9, 1051 Budapest, Hungary
Architects: O'Donnell + Tuomey
Directors: Sheila O'Donnell, John Tuomey / Associate: Mark Grehan / Project architect: Ciara Reddy / Architects: Anne Louise Duignan, Brian Barber, Jitka Leonard, Geoff Brouder, Henrik Wolterstorff / Architectural assistants: Kevin O'Brien, Jonathan Janssens, Gary Watkin, Iseult O'Clery, Lauren Small, Edin Gicevic
Local architect: Teampannon
Project architect: Máté Hidasnémeti / Architects: Bence Varga, Ádám Kern, Andrea Szabó, Eszter Bagdy, Szabolcs Kriston, Ágnes Légár, Gábor Palotás, Szandra Borsay
Project manager: Central European University Development Office
Structural engineer: Kenese / Mechanical engineer: Temesvári Tervező / Electrical engineer: Kelevill FZ / Fire consultant: Takács-Tetra
Acoustic consultant: Aqrata Akusztikai Mérnök Iroda / Landscape architect: Gardenworks / Quantity surveyor: Tomlin
Client: Central European University
Site area: 2,697m² / Gross floor area: 15,638m² / Completion: 2016.10
Photograph: ©Tamás Bujnovszky (courtesy of the architect) (except as noted)





© Daniele Vige (courtesy of the architect)



© Daniele Vige (courtesy of the architect)

