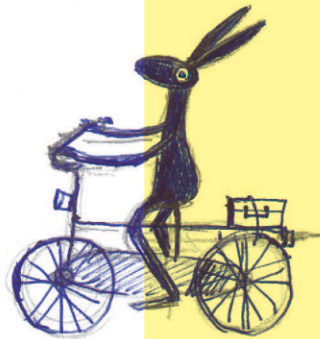


HOW TO GET TO VILLA AUGUSTUS

Villa Augustus is easily accessible by car and by public transport.



BY CAR

FROM THE DIRECTION OF ROTTERDAM

- Follow the A15/E31 towards **Gorinchem/Nijmegen**.
- Take exit 23 for **Papendrecht**, turn right at the traffic lights on to the N3, towards **Papendrecht**.
- After 2.5 km, take the turning for **Staat**. Turn left at the traffic lights, towards **Staat**. You are now in the Merwedestraat.
- After about 2 km, you are on the Oranjelaan and you will see Villa Augustus on your right.

FROM THE DIRECTION OF UTRECHT

- Follow the A27/E30 towards **Breda**.
- At the Gorinchem intersection, take the A15/E31, towards **Rotterdam**.
- Take exit 23 for Papendrecht, turn left at the traffic lights on to the N3, towards **Papendrecht**.
- After 2.5 km, take the turning for **Staat**. Turn left at the traffic lights, towards **Staat**. You are now in the Merwedestraat.
- After about 2 km, you are on the Oranjelaan and you will see Villa Augustus on your right.

FROM THE DIRECTION OF BREDA AND ANTWERP

- Follow the A19/E19 towards **Rotterdam**.
- Take exit 20 towards '**Randweg Dordrecht**' and, at the traffic lights, turn right onto the N3.
- After 2.5 km, take the turning for **Staat**. Turn left at the traffic lights, towards **Staat**. You are now in the Merwedestraat.
- After about 2 km, you are on the Oranjelaan and you will see Villa Augustus on your right.

PARKING

- To enter the car park, turn right after the yellow restaurant building. These are paid parking spaces.



See other side for more information. →

HOW TO GET TO VILLA AUGUSTUS (CONTINUED)

PUBLIC TRANSPORT

From Dordrecht Central Station take Arriva bus 4 towards **Start**. Get out at the Parklaan stop. You will see Villa Augustus on your right.

You're nearly there!

ON FOOT

FROM DORDRECHT CENTRAL STATION

- From Dordrecht Central Station, turn right into the Burgemeester De Raadsingel (350 metres)
- Follow the road round to the left. You are now in the Toulonselaan (50 metres)
- At the end of the Toulonselaan, cross the Vrieseweg (400 metres)
- Turn right and then immediately left. You are now in the Sumatralaan, which becomes the Oranjelaan (200 metres)
- Follow the Oranjelaan until you reach the entrance to Villa Augustus (900 metres)

BY WATERBUS

You can take your bicycle on board!

You can get to Villa Augustus by waterbus from Rotterdam, Krimpen aan den IJssel, Alblasserdam, Hendrik Ido Ambacht, Papendrecht, Sliedrecht and Zwijndrecht. You can find information on departure times, stops and ticket prices at www.waterbus.nl.

The waterbus stops at the Merwekade. From there it is 15 minutes' walk to Villa Augustus:

- Turn left and follow the Merwekade (200 metres)
- Follow the road round to the right. You are now in the Bleijenhoek (200 metres)
- Follow the Torenstraat, which becomes the Noordendijk (200 m)
- After about 700 metres on the Noordendijk, you turn left. You are now walking to the Villa Augustus car park.
- Here you can cross the small bridge over the Vlij, towards the entrance to Villa Augustus.

