

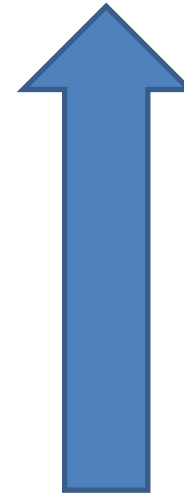
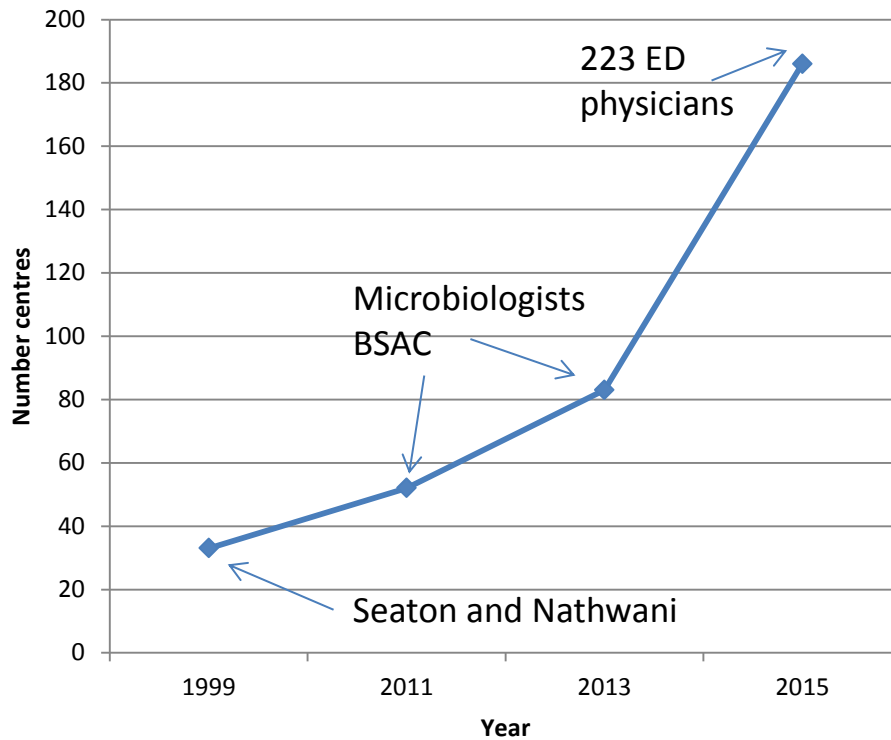
The expanding OPAT landscape and integrated patient pathway

Frances Sanderson

Infectious Diseases

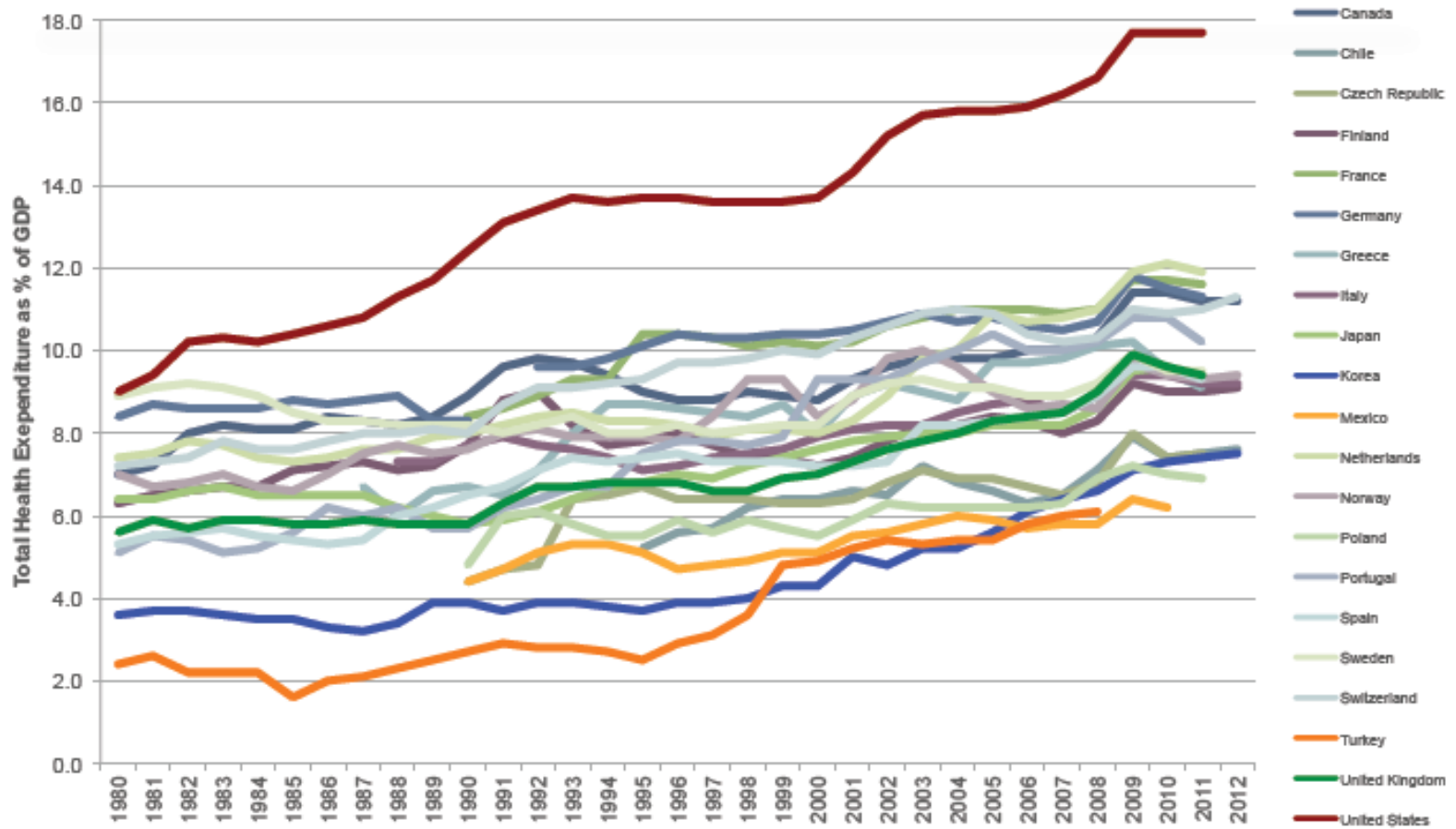
Imperial College Healthcare NHS Trust

OPAT Landscape



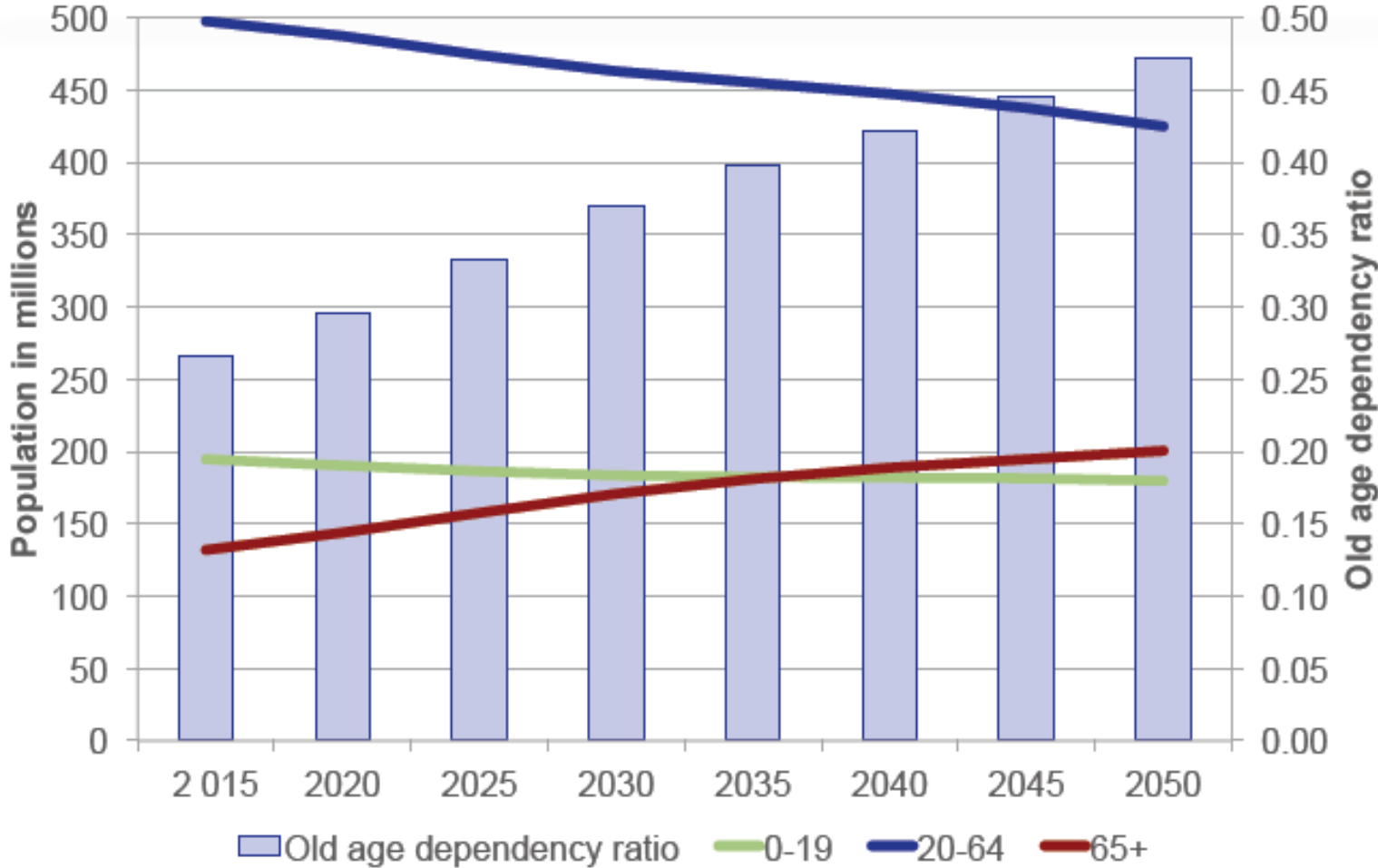
- Cost reduction – ambulatory care
- Patient experience

Health expenditures as a % of GDP – OECD



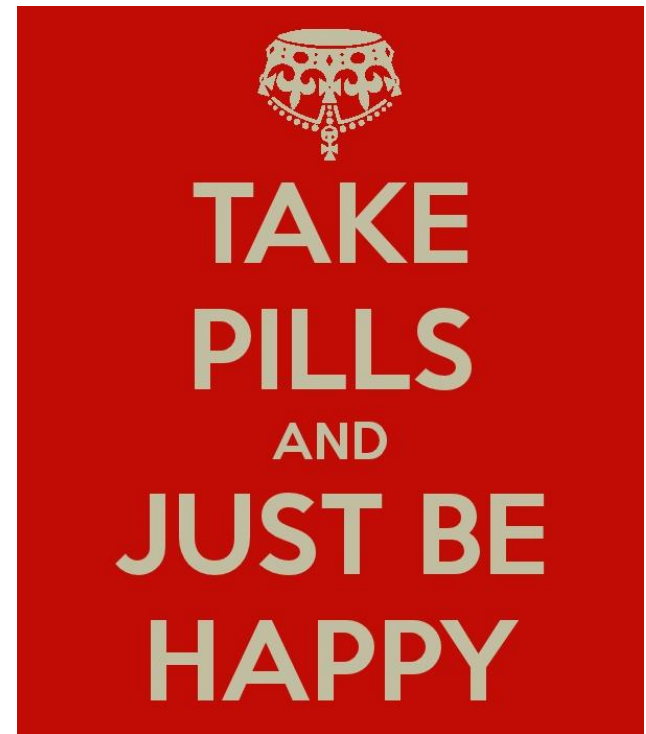
Source: OECD Health Data 2013

Population and old age dependency ratio in Europe

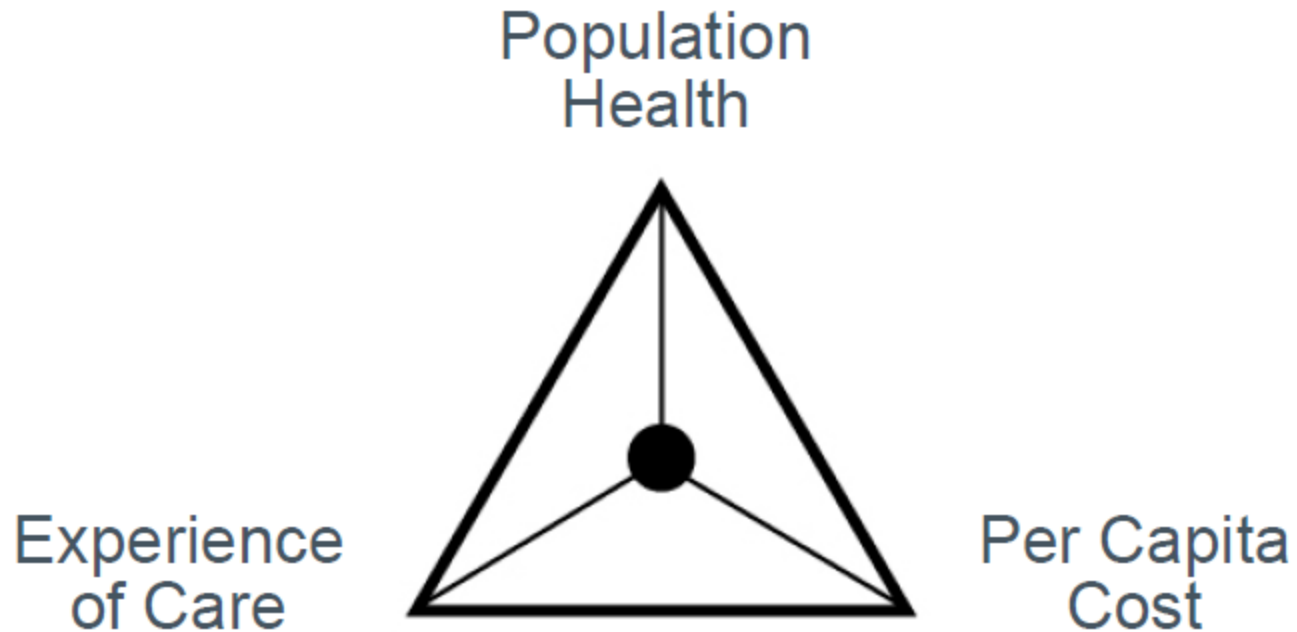


5 year forward view NHSE

- Dissolve artificial barriers – silos of primary and acute care
- New models of care
 - MCP
 - PACS
- Digital technology
- 250M for primary care and out-of-hospital infrastructure



The Triple Aim at the heart



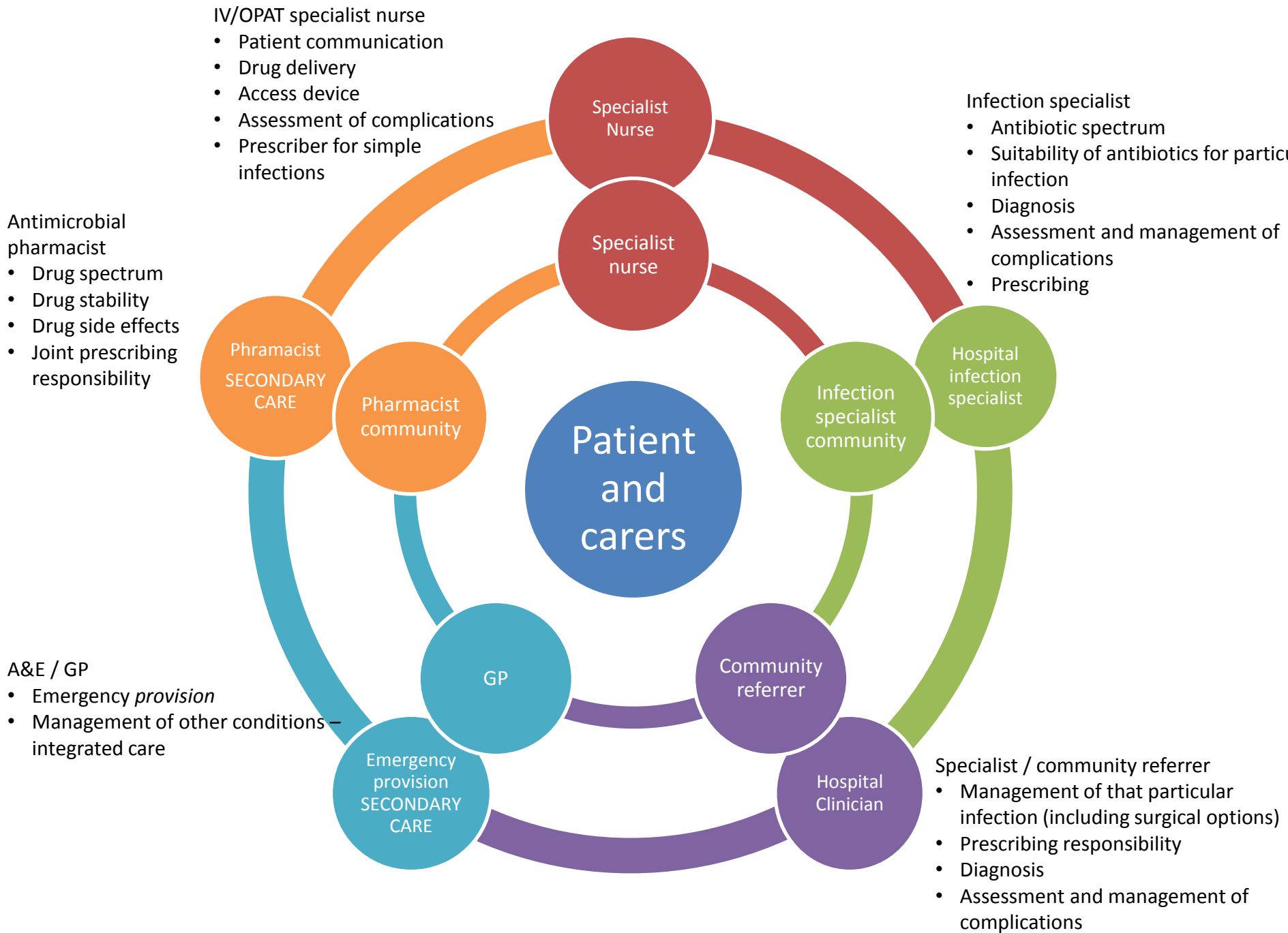
Integrated patient pathway workstream

- Kate Owens District nurse team leader
community IV team, Dudley
- Sue O'Hanlon, Lead nurse, Bridgewater
Community Health Centre
- Colette Gilmore, OPAT specialist nurse, Oxford
- Jagdeep Sangah, Community pharmacist, Dudley
- Sandra Wolper, Head of Pharmacy, Howslow and
Richmond Community Healthcare

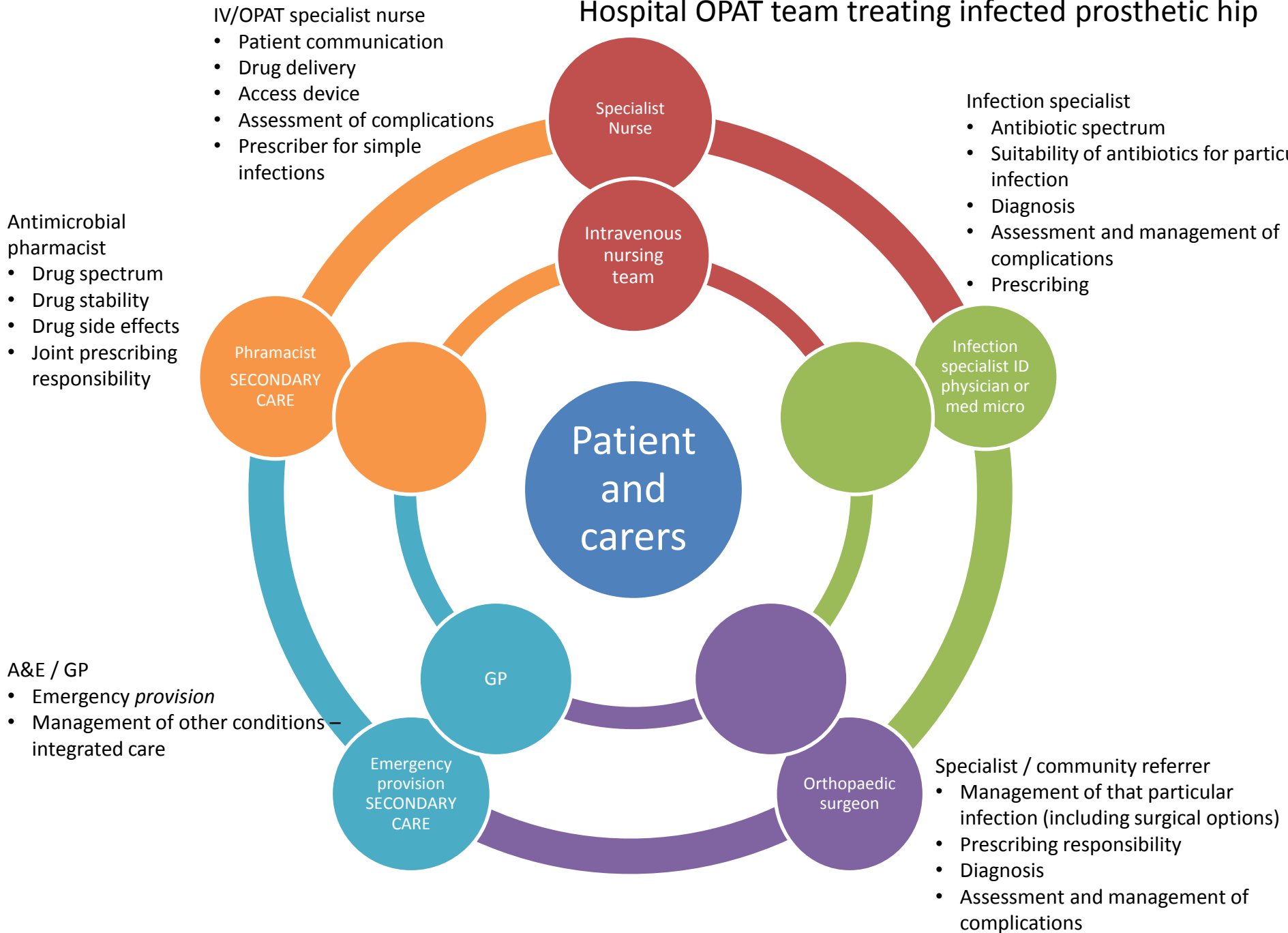
Issues with IV therapy



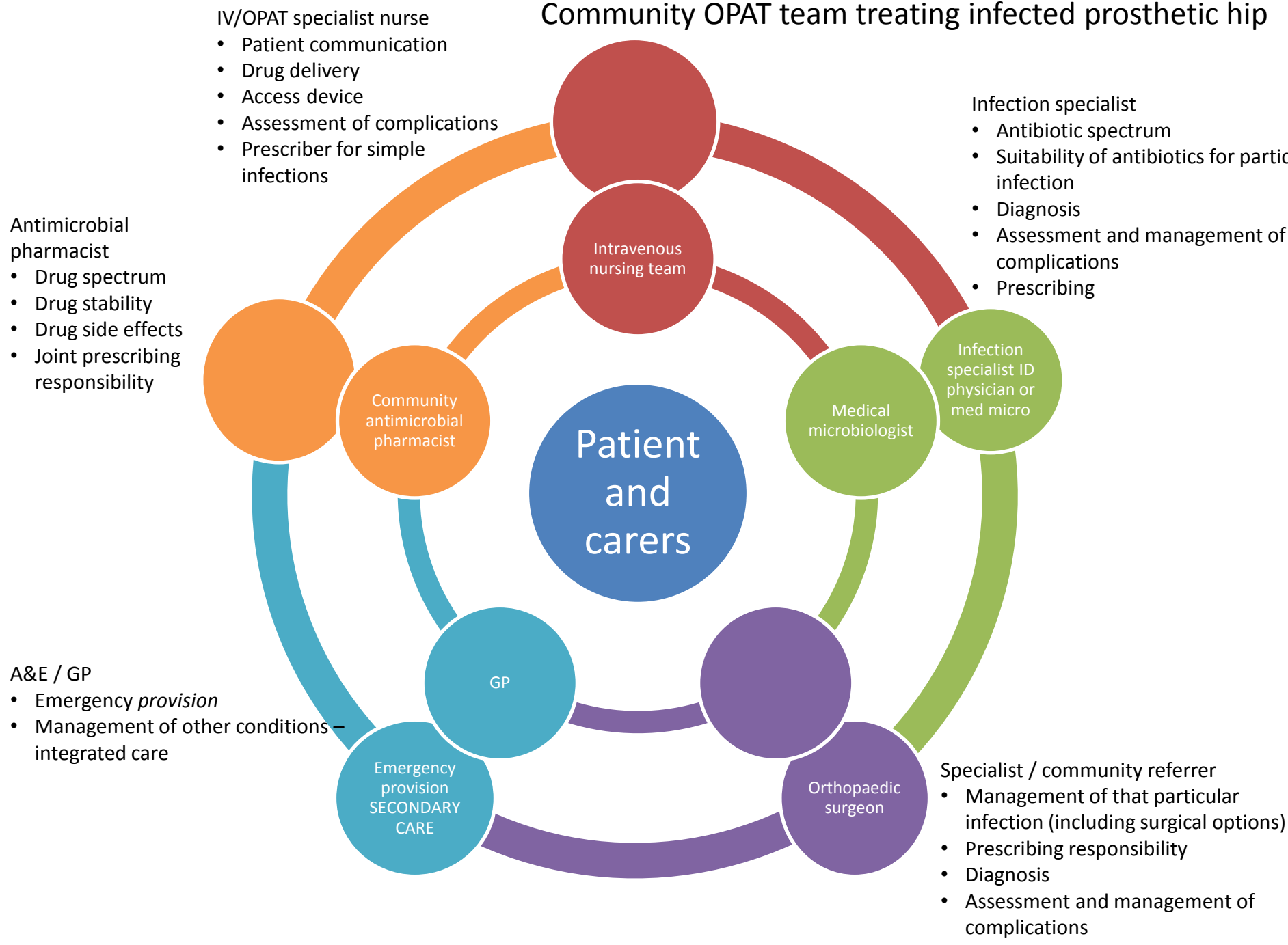
- Suboptimal IV access
- Choice of therapy
 - Not optimal for outpatients
 - Prolonged courses
- Responsibility for monitoring unclear
 - Side effects
 - Progress
- Access to help and advice for community teams



Hospital OPAT team treating infected prosthetic hip



Community OPAT team treating infected prosthetic hip

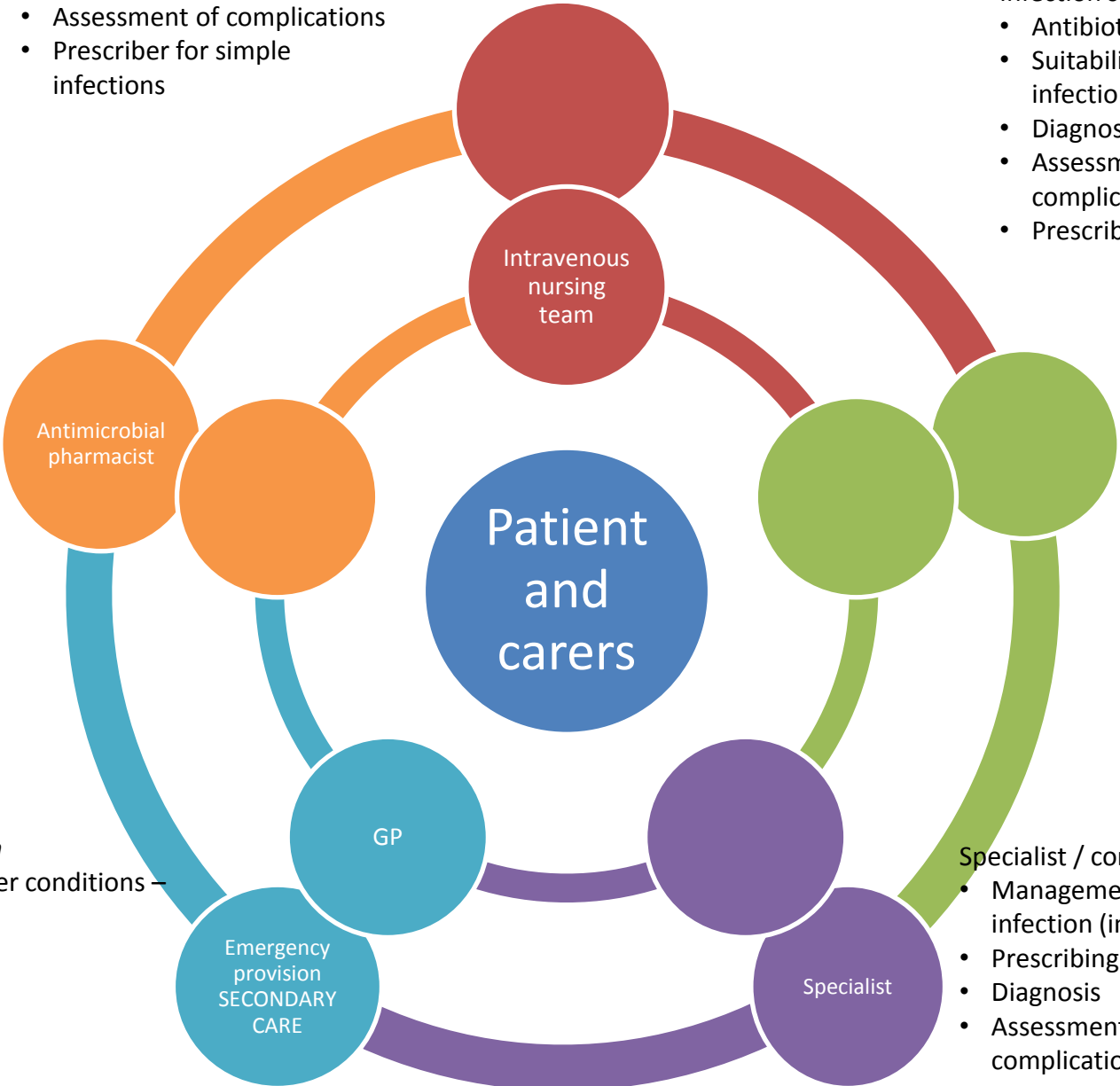


Rx initiated by hospital specialist or GP, without support

- IV/OPAT specialist nurse
- Patient communication
 - Drug delivery
 - Access device
 - Assessment of complications
 - Prescriber for simple infections

- Infection specialist
- Antibiotic spectrum
 - Suitability of antibiotics for particular infection
 - Diagnosis
 - Assessment and management of complications
 - Prescribing

- Antimicrobial pharmacist
- Drug spectrum
 - Drug stability
 - Drug side effects
 - Joint prescribing responsibility



- A&E / GP
- Emergency provision
 - Management of other conditions – integrated care

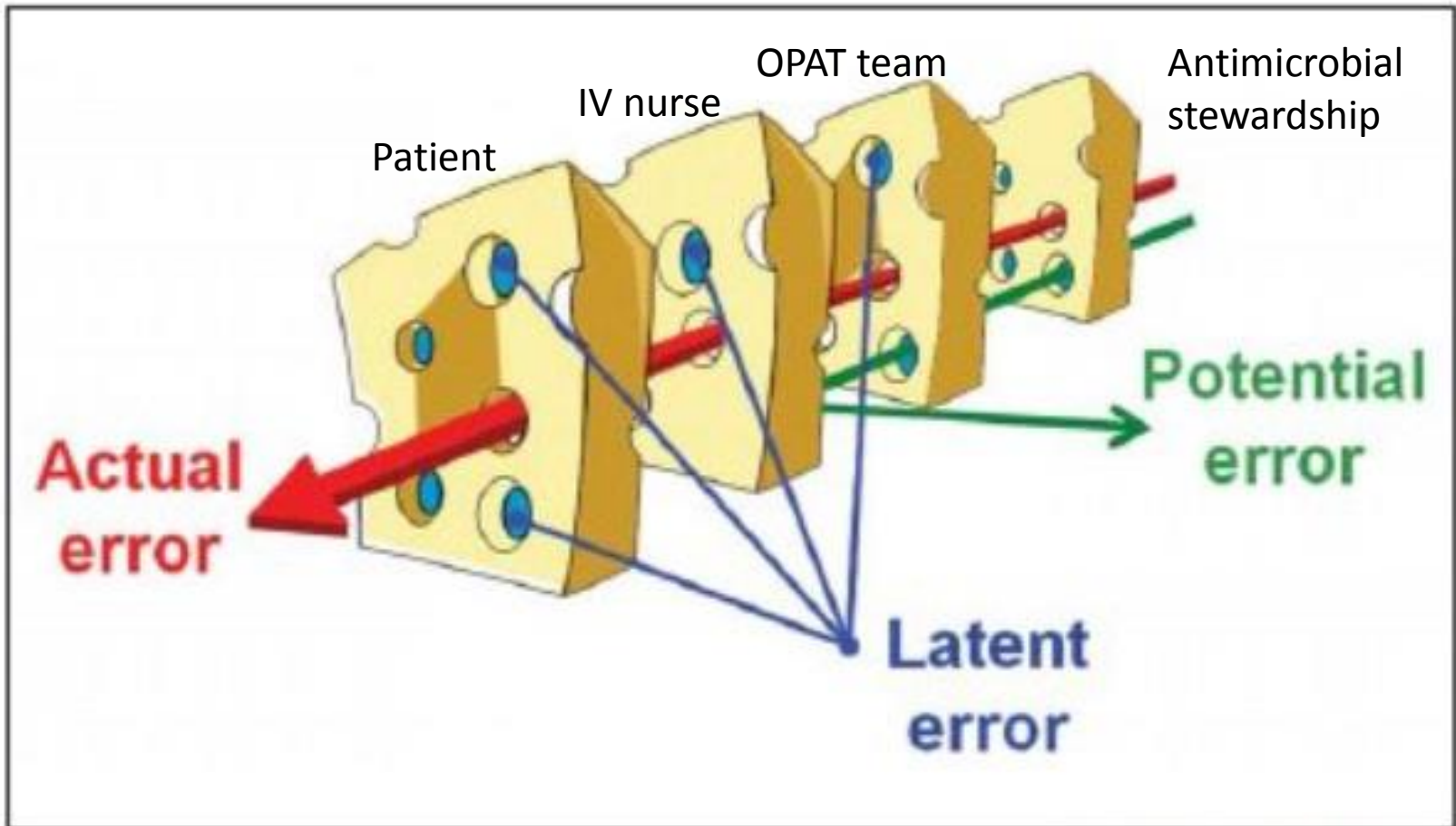
- Specialist / community referrer
- Management of that particular infection (including surgical options)
 - Prescribing responsibility
 - Diagnosis
 - Assessment and management of complications

Infection consultant review before discharge

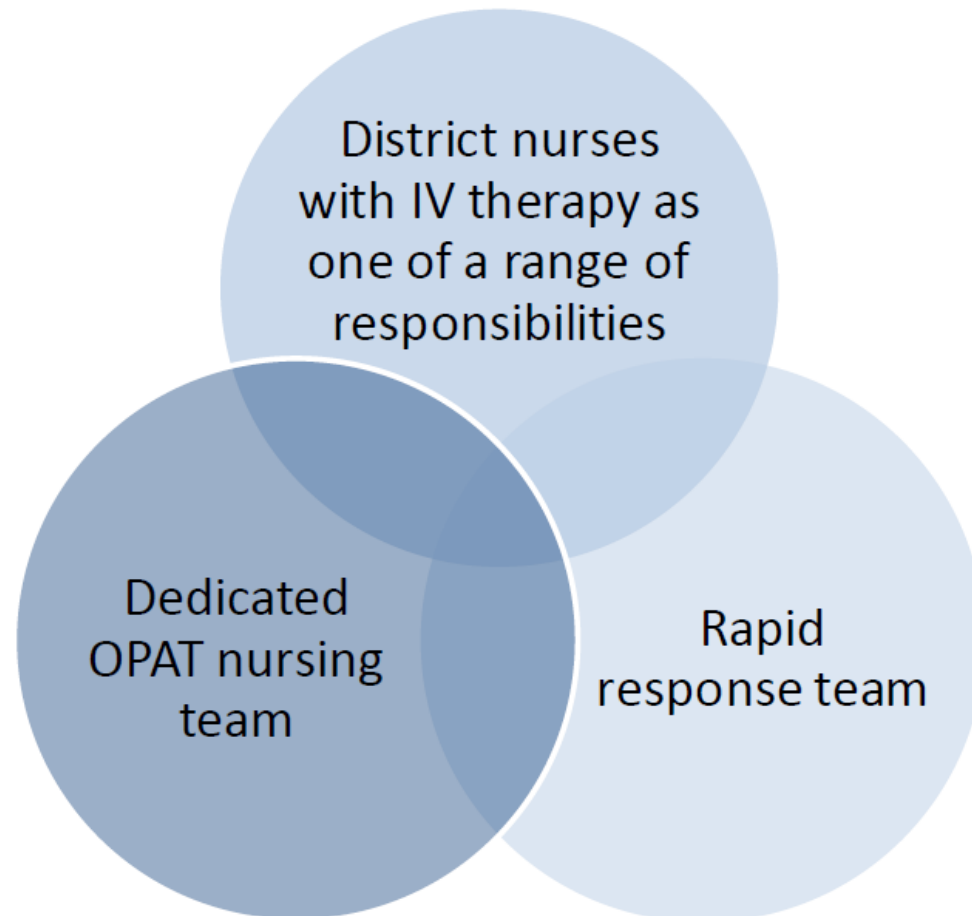
244 OPAT requests over 3 months

175 (72%)
approved

69 (28%) oral
switch / stop



Community nursing teams delivering IV antimicrobial therapy



Workstream outputs

- Paperwork and protocols for nursing teams
 - Competencies addressed by different working group
- Nursing network
- Guide for commissioners
 - Importance a service to delivery of IV antimicrobial at home service
 - Examples of existing structures that deliver this safely, complying with OPAT standards; what other structures could be envisaged
 - Payment options

Integrated patient pathway workstream members

- Kate Owens District nurse team leader
community IV team, Dudley
- Sue O'Hanlon, Lead nurse, Bridgewater
Community Health Centre
- Colette Gilmore, Oxford
- Jagdeep Sangah, Community pharmacist,
Dudley
- Sandra Wolper, Head of Pharmacy,
Howslow and Richmond Community
Healthcare



©Ron Leishman * illustrationsOf.com/438753