

INDUSTRIAL DOORS

Sensor solutions for industrial doors

Icons

Optex is the preferred supplier for Entrance detection systems. Our portfolio includes safety and activation solutions for automatic Swing, Sliding, and Revolving doors, as well as products for Secured Entry and Industrial door applications.

Proven technologies, trusted solutions

Please contact us for more information

OPTEX TECHNOLOGIES B.V.

Henricuskade 17
2497 NB The Hague

T +31 70 419 41 00

E info@optex.eu

www.optex.eu

MICROWAVE TECHNOLOGY



INFRARED TECHNOLOGY



INFRARED TECHNOLOGY
& LOOKBACK



DUAL TECHNOLOGY



LASER TECHNOLOGY



INDUSTRIAL DOOR



VERY LITTLE TRAFFIC



AVERAGE AMOUNT OF TRAFFIC



MOUNTING HEIGHT



INFRARED FINDER



ENERGY SAVING



RANGE OF INDUSTRIAL DOOR SENSORS

OAM- EXPLORER **P4**

OAM-Dual II **P5**

OA-4500 **P6**

OA-6500 **P7**



OAM-EXPLORER



The *new OAM-Explorer* for industrial doors is future ready with its **own app** to safely install the sensor. This sensor ignores cross traffic for **energy saving**.

PERFORMANCE

Wide detection area

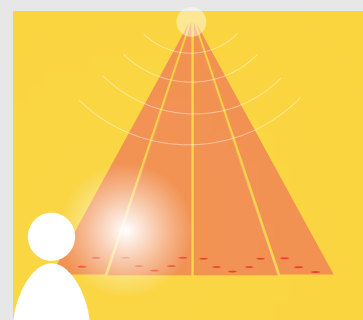
Mounted maximum 6 meters from the floor, the OAM-Explorer has a large microwave detection area for **speedy** activation and an active infrared presence detection area to guarantee **safe passage**.

Future ready

The OAM-Explorer is easily installed using the **accompanying smartphone app** and its ability to ignore crossing traffic adds to **energy savings**. The additional Link-BT1 module enables sending signals to other devices such as a flashing light or a sounder.

Highlights

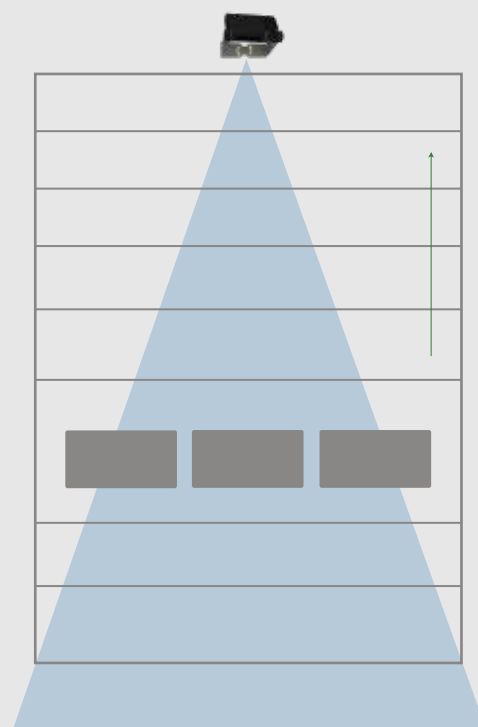
- app for installation
- energy saving
- mount up to 6 meters
- large detection area
- easy adjustment
- IP65 & operating temperature -35°C +55°C



DUAL TECHNOLOGY



SENSOR POSITION



OAM-DUAL II



This industrial door sensor makes use of both radar and active infrared to provide early activation and safety in and around the threshold.

PERFORMANCE

Safety

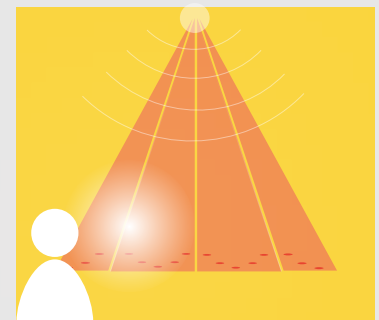
The **active infrared presence detection** offers 2 rows of safety in front of the threshold. These can be set very accurately and can be moved 6° towards or away from the door. The **Bluezone/Lookback** functionality offers additional safety as the extra row of presence detection looks directly into the threshold.

Motion Detection

The large **microwave motion detection** area provides fast detection for any traffic, approaching from any angle, which allows the door to open conveniently. And the **uni-directional function**, allows the doors to close faster when traffic is moving away from the door, this will contribute to significant **energy savings**.

Highlights

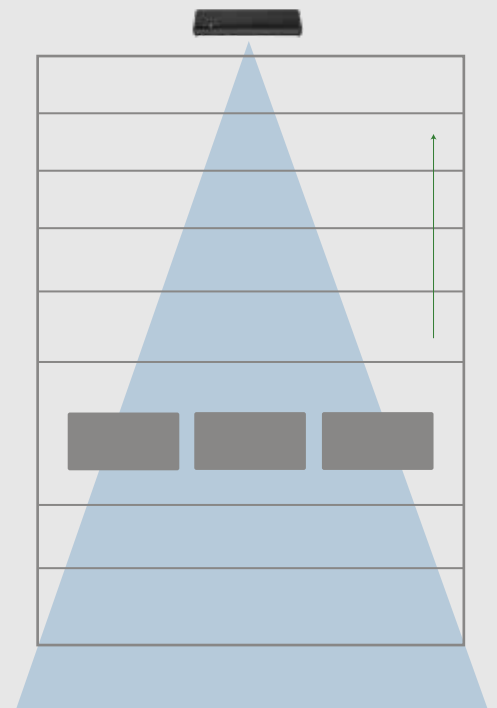
- energy saving
- safety and activation
- mounting height up to 3,5 meters
- easy adjustment



DUAL TECHNOLOGY



SENSOR POSITION



OA-4500



*This **combination sensor** is the active infrared industrial door sensor standard for use on doors up to a **mounting height of 4,5 meter**.*

PERFORMANCE

Safety

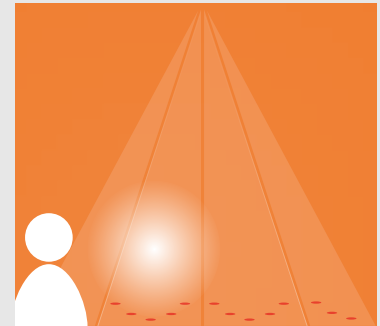
The **active infrared presence detection** of the OA-4500 can be set **very accurately** and can be moved 6° towards or away from the door. The sensor detects a person or object and holds the door open as long as they are in or near the threshold area, even if they stop or pause.

Combination

The Optex OA-4500 is based on active infrared technique, **combining activation and safety into one sensor**. By using the unique Optex presence detection technique the OA-4500 provides **maximum safety** around the threshold of an industrial door and offers, at the same time, a **large motion detection area** for door activation.

Highlights

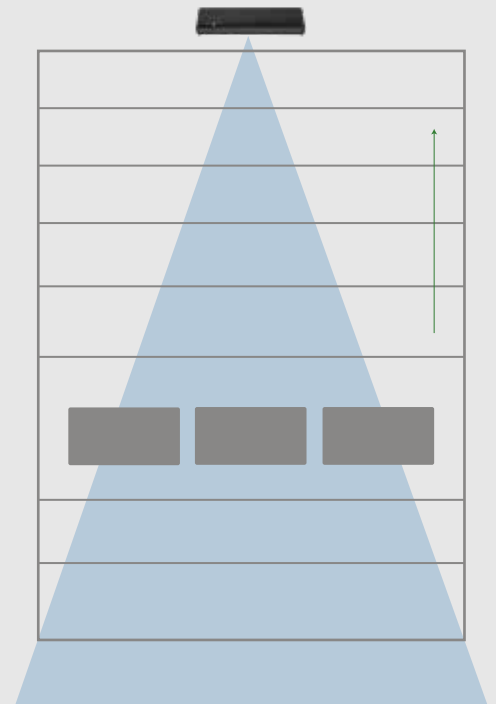
- presence & activation
- mounting height 4,5 meters
- easy adjustment
- medium detection area



INFRARED TECHNOLOGY



SENSOR POSITION



OA-6500



*This **combination sensor** is the active infrared industrial door sensor standard for use on doors up to a **mounting height of 6,5 meter**.*

PERFORMANCE

Safety

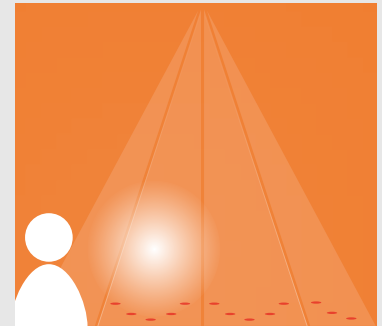
The **active infrared presence detection** of the OA-6500 can be set **very accurately** and independent from the activation setting. The sensor detects a person or object and holds the door open as long as they are in or near the threshold area, even if they stop or pause.

Combination

The Optex OA-6500 is based on active infrared technique, **combining activation and safety into one sensor**. By using the unique Optex presence detection technique the OA-6500 provides **maximum safety** around the threshold of an industrial door and offers, at the same time, a **large motion detection area** for comfortable door activation.

Highlights

- presence & activation
- mounting height 6,5 meters
- easy adjustment
- large detection area



INFRARED TECHNOLOGY



SENSOR POSITION

