

Manufacturer's statement

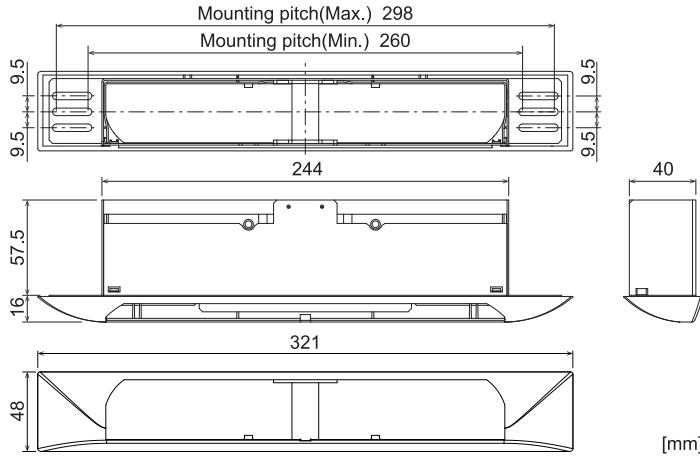
This product is a Built-in Bracket for header-mounted sensors (OA-FLEX T/OA-FLEX AIR T). Do not use it for any other purposes. When using this product, strictly follow the details defined in the standards and guidelines for automatic door in your market.

Read this operation manual carefully before use to ensure proper installation of this product. Failure to read this operation manual may cause improper operation and may result in serious injuries of a person. The meanings of the symbols are as follows.

CAUTION Failure to follow the instructions that accompany this indication and improper handling may result in injury and/or damage to property.

When using this product, also check the manual of the sensor.

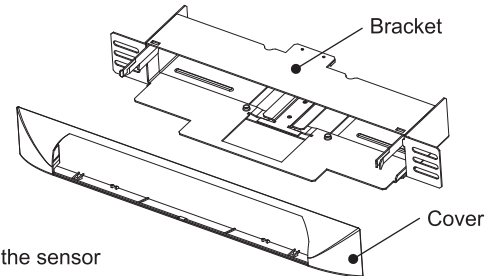
Outer dimensions and part names



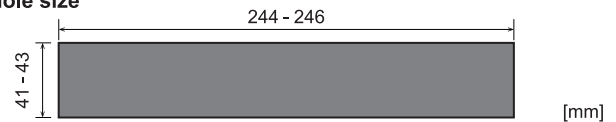
Accessories

- 1 Bracket
- 1 Cover
- 4 Mounting screws
- 1 Manual
- 1 Protective sticker

Weight : 380 g
* Not including the sensor

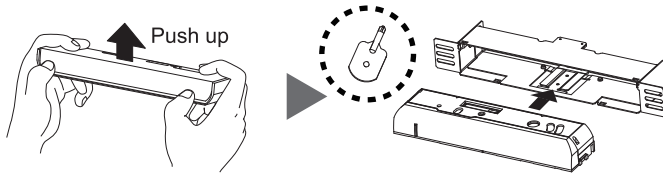


Mounting hole size



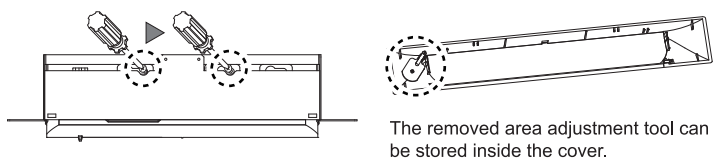
Installation

Step 1. Remove the housing cover from the sensor, and insert it into the bracket.

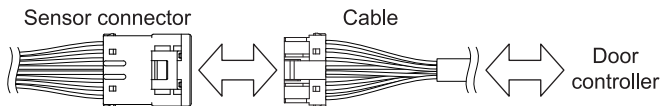


CAUTION Remove the area adjustment tool in advance. It cannot be stored in the top of the Built-in bracket after installation.

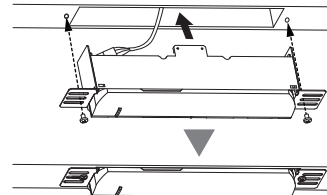
Step 2. Fix the sensor to the bracket with the two mounting screws.



Step 3. Wire the cable to the door controller.



Step 4. Insert the Built-in bracket into the mounting hole, and fix the bracket with the two mounting screws.

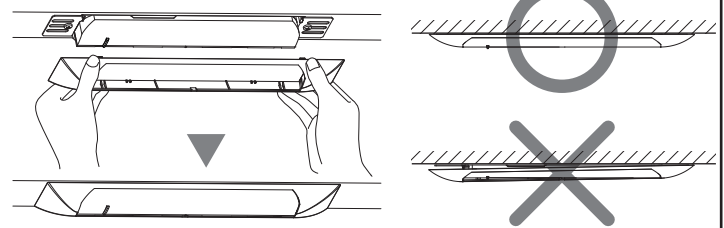


CAUTION

For installation in drywall, use board anchors or a similar method to securely fix the bracket in place.

Step 5. Configure the sensor settings following the sensor's operation manual. (Refer to "Sensor settings - Step 2.") After setting the sensor, affix the protective sticker to the front of the product for dustproofing.

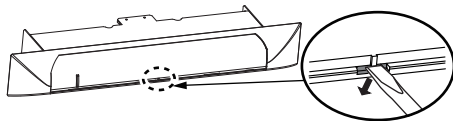
Step 6. Fix the cover.



CAUTION Check that the cover is securely attached, otherwise it may fall off.

Sensor settings

Step 1. Remove the cover.

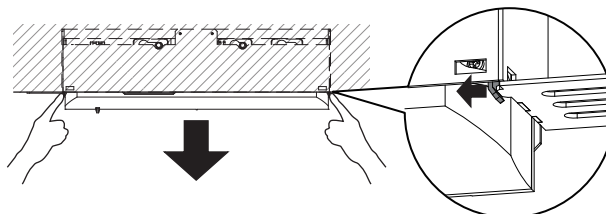


Insert a flathead screwdriver or a similar item with a pointed tip into the notch in the cover, and remove it by lowering it toward the door.

CAUTION

Do not forcibly remove the cover from the left or right. It may damage the cover.

Step 2. Push the left and right tabs to the inside to expose the sensor.



Step 3. After configuring the settings, follow "Installation - Step 6." to fix the cover.

Manufacturer

OPTEX CO., LTD.

5-8-12 Ogoto Otsu 520-0101, Japan
Tel : +81(0)77 579 8700
www.optex.net

EMEA Subsidiary

OPTEX Technologies B.V.

Tel : +31(0)70 419 41 00
info@optex.eu
www.optex.eu