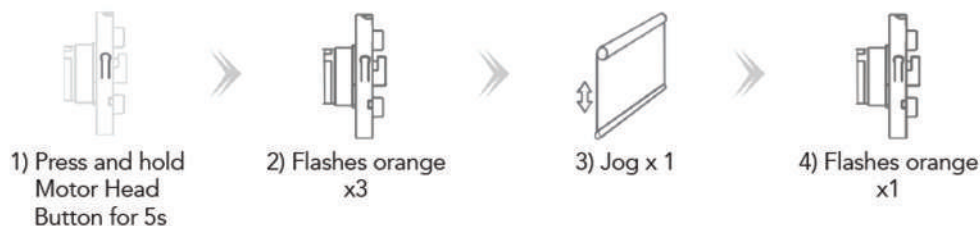




When your blind arrives, the motor will be in 'sleep mode'.
Once you have installed the blind, wake it up by following these steps:

Exiting Sleep Mode



Now your blind is awake, test the remote. The upper and lower limits will already be set for you, but you might want to fine tune them to perfection:

Adjusting Upper Limit



Adjusting Lower Limit



You can also set and save a 'favourite' position at a certain limit:

Setting Favourite Position



Cancelling Favourite Position

