

Perfect Fit Venetian Blinds

Fitting Guide

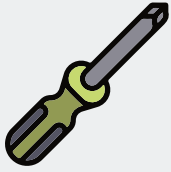
A Comprehensive Guide For Fitting Your New
Perfect Fit Venetian Blinds

ORDER
BLINDS



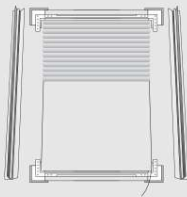
WHAT IS NEEDED

Screwdriver

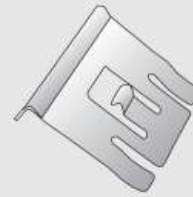


WHAT IS INCLUDED

Perfect Fit Frame + Blind



Brackets



IMPORTANT INFORMATION

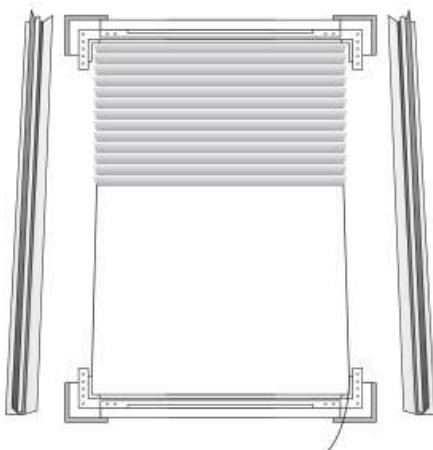
Be careful when opening packaging so as not to damage the fabric.

Unpack the blind and frame. Please ensure you've located the brackets before disposing of the packaging. Please also read the following instructions carefully before you start fitting your blind.

If you have any questions or need further guidance on installing your Perfect Fit Venetian Blinds, please do not hesitate to contact our customer service team on 0115 9699933 or alternatively you can email info@orderblinds.co.uk.

PUT THE FRAME TOGETHER

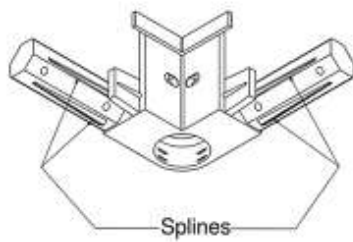
1



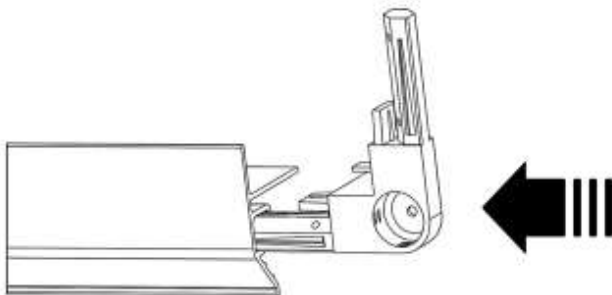
PUTTING THE FRAME TOGETHER

Lay out all the parts of the frame and blind face down on a clean even surface. Next unravel the side guide cords and control cords which will be wrapped around your blind.

Your blind will be attached to the top and bottom parts of the frame by side guide cords. Repeat on the other side of the blind.



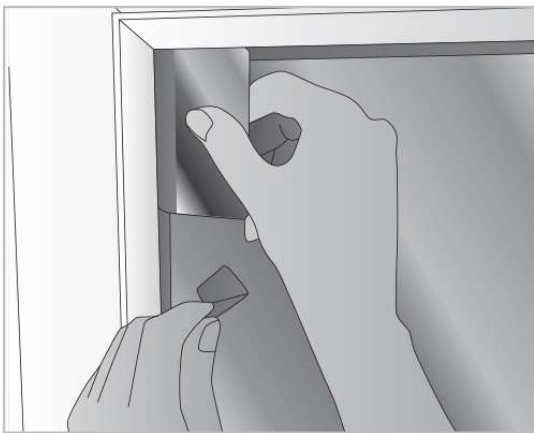
Use the push fit corner pieces to join the side rails to the top and bottom frames of the blind. Simply push them into the slots in the frame pieces to lock them into place.



Once this has been completed, your Perfect Fit frame and blind are ready to be fitted.

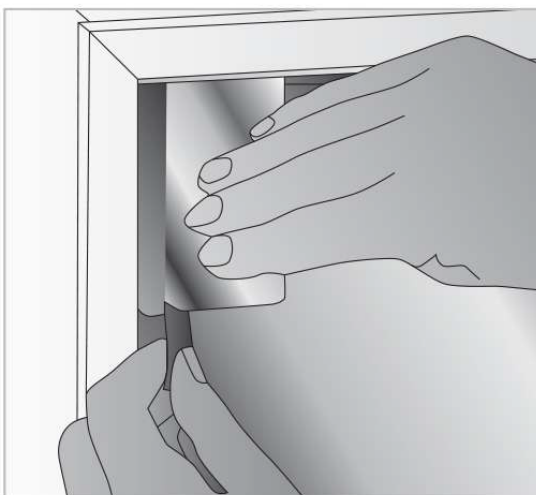
ATTACHING THE BRACKETS

2



You need to push the brackets between your window pane and the rubber window seal.

Top tip: use a credit card as a template to find the correct position for the brackets. Place the card lengthways along each corner of the window and line the brackets with the end of the card as shown.



Fit any intermediate brackets accordingly. Two extra brackets will be supplied for blinds over 120cm drop, these should be positioned approx mid way down the drop of the blind one on each side. These need to be lined up with the bracket hole positions on the Perfect Fit frame.

If you find the brackets difficult to place behind the window seal, you can use some washing up liquid as lubricant.

ATTACH THE FRAME AND BLIND TO THE WINDOW

3

Line up the holes in the Perfect Fit frame with the brackets, then firmly press the frame onto each bracket one side at a time. Once completed your frame and blind are now installed.



SAFETY TIPS

- Move beds, cots and furniture away from the window.
- Do not let cords or chains hang loose. Make sure they are kept out of reach of children at all times.
- Do not tie loose cords and chains together.
- Check the condition of all safety devices if not used regularly and replace if the device is faulty.

ORDER
BLINDS



ADDITIONAL INFORMATION

4

OPERATING YOUR BLIND

- Simply raise and lower the blind to the desired position by firmly holding the thumb tab.
- To adjust the angle of the slats, twist the wand.
- Slats need to be open when raising and lowering the blind.

We'd love to see how your new blinds look in your home! Share your photos with us on social media, and don't forget to tag us **@orderblinds**.

Your stylish design could be featured on our page to inspire other customers. Whether it's a bold statement or a subtle touch, your space could be the perfect inspiration for others looking to refresh their home.

Please note, our opening hours are:

Monday - 9:00am - 5:00pm
Tuesday - 9:00am - 5:00pm
Wednesday - 9:00am - 5:00pm
Thursday - 9:00am - 5:00pm
Friday - 9:00am - 3:00pm

Order Blinds Online Ltd
Unit 10, Barbrey Business Park,
Orston Lane, Bottesford
Leicestershire NG13 0GY

ORDER
BLINDS 



0115 9699933



info@orderblinds.co.uk