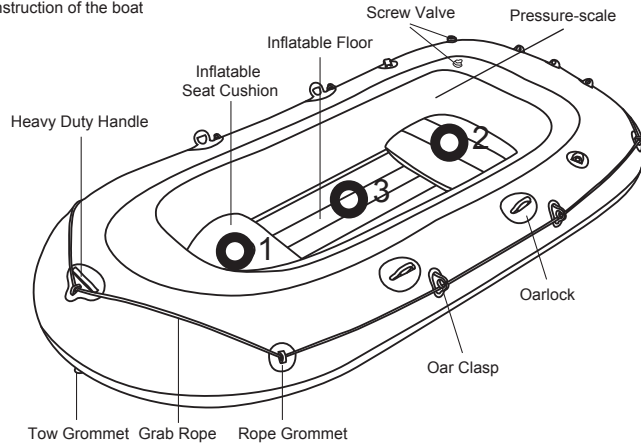


#61063E; #61064E; #61065E; #61066E; HYDRO-FORCE™ RAFT OWNER'S MANUAL

Technical Specifications

Item	61063E	61064E	61065E	61066E
Inflated Size	76 in. x 43 in. (1.94 m x 1.10 m)	90 in. x 48 in. (2.28 m x 1.21 m)	100 in. x 50 in. (2.55 m x 1.27 m)	121 in. x 50 in. (3.07 m x 1.26 m)
Maximum Weight	264 pounds (120 kg)	374 pounds (170 kg)	495 pounds (225 kg)	594 pounds (270 kg)
Passenger Capacity	1 adult	2 adults	2 adults	3 adults
Inflation Pressure	0.03 bar (0.435 psi)	0.03 bar (0.435 psi)	0.03 bar (0.435 psi)	0.03 bar (0.435 psi)
Dry Weight	6.4 lbs.(2.9 kg)	9.7 lbs.(4.4 kg)	15.0 lbs.(6.8 kg)	19.6 lbs.(8.9 kg)
Maximum Motor Power	/	/	1.0kw(1.4hp)	1.0kw(1.4hp)

Construction of the boat



“O” - Recommended seating arrangement of the occupants.

For 61063E: Number 3

For 61064E/61065E: Number 1 ; Number 2

For 61066E: Number 1 ; Number 2 ; Number 3

NOTE: Drawings for illustration purpose only. Not to scale. Inflatable seats are not included with the following boat size: 76 in. x 43 in. (1.94 m x 1.10 m); 90 in. x 48 in. (2.28 m x 1.21 m).

The boats are designed and manufactured in conformity with ABYC H-28.

Boat Design Category -“SHELTERED WATERS”: Designed for voyages on sheltered coastal waters, small bays, small lakes, rivers and canals when conditions up to, and including, wind force 4 and significant wave heights up to, and including, 0.3 m may be experienced, with occasional waves of 0.5 m maximum height, for example from passing vessels.



Warning

IMPORTANT SAFETY INSTRUCTIONS

Follow all the Safety and Operating Instructions. If you don't follow these instructions, it may cause the boat to overturn or explode and result in drowning.

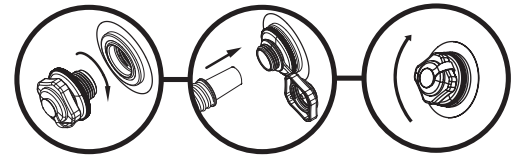
- Do not exceed the maximum recommended number of persons. Regardless of the number of persons on board, the total weight of persons and equipment must never exceed the maximum recommended load. Always use the seats /seating spaces provided.
- When loading the craft, never exceed the maximum recommended load: Always load the craft carefully and distribute loads appropriately to maintain design trim (approximately level). Avoid placing heavy weights high up.
NOTE: The maximum recommended load includes the weight of all persons onboard, all provisions and personal effects, any equipment not included in the light craft mass, cargo (if any) and all consumable liquids (water, fuel, etc.).
- When using the boat, life saving devices such as life jackets and buoys should be pre-inspected and used at all times.
- Before every use, carefully inspect all boat components including air-chambers, grab ropes, oars, and air valves, to ensure everything is in good condition and tightly secured. If you find any damage, please stop to repair it.
- Buckets, water scoops and air pumps should always be available in case of air leakage or if the boat takes on water.
- When the boat is in motion, all passengers must remain seated at all times to avoid falling overboard. Keep the boat balanced. Uneven distribution of persons or load in the boat may cause the boat to overturn and result in drowning.
- Use the boat near the shore and beware of natural factors such as wind, tide waters and tidal waves.
BE AWARE OF OFFSHORE WINDS AND CURRENTS.
- If one chamber is punctured when the boat is in the water, it may be necessary to fully inflate the other air chamber to prevent the boat from sinking.
- Be careful when landing on the shore. Sharp and rough objects such as rocks, cement, shells, glass, etc. may puncture the boat. To avoid damage, do not drag the boat on rough surfaces.
- When choosing an outboard motor, refer to the technical specifications section of this manual to determine acceptable horsepower ratings.
- For electrical motors equipped with batteries, note that battery acid can be caustic, which can cause damage to both skin and boat materials.
- For motors which use fuels such as gas, oil or petrol, since fuel is a flammable substance, it should be kept away from open flames. Further, clean the boat material immediately if fuel spatters onto the boat surface. Be aware of the potential harmful effects of liquids such as battery acid, oil or petrol. The liquids may damage your boat.
- Inflate according to the numbered air chamber and rated pressure of the boat, or it will cause over-inflation and potential and boat explosion. Exceeding the data given on the capacity plate may cause the craft to be damaged, overturn and lead to drowning.
- If you use the tow rings to tow the boat, go slowly to avoid over-towing as damage may occur.
- Know how to operate a boat. Check in your local area for information and/or training as needed. Inform yourself about local regulations and dangers related to boating and/or other water activities.
- The operator of a vessel is responsible for the maintenance and safe conduct of the vessel and the safety of passengers.
- Prohibit the product misuse, such as, but not limited to: (a) riding seat back, gunwale, or other unsafe position, (b) failure to use handhold, (c) overloading or improper loading, (d) excessive speed for the operating conditions, (e) using a boat in weather or sea conditions beyond the skill or experience of the operator, (f) continued operation with operator's visibility blocked or impaired (g) operating under the influence of drugs or alcohol, and/or (h) modifications.
- Boat operation where the boat operator or occupants are not under the influence of drugs and/or alcohol.
- Knowledge of federal, state, and/or local regulations concerning operation requirement, including: (a) discharge of oil, (b) solid waste disposal (Marpol Treaty), (c) marine sanitation, (d) speed, (e) noise, and (f) wake
- Knowledge of accident reporting requirements.
- The owner of operator of a vessel is required by law to render assistance to any individual or vessel in distress, as long as his vessel is not endangered in the process.
- U.S.Coast Guard Infoline: (800)368-5647. Web site: www.uscgboating.org

SAVE THESE INSTRUCTIONS

Inflation
NEVER USE HIGH PRESSURE AIR TO INFLATE INFLATABLES. THIS CAN DAMAGE YOUR PRODUCT AND VOID YOUR WARRANTY

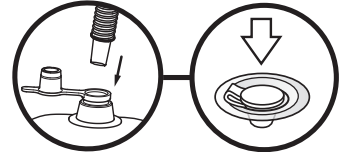
1. Screw Valve

Screw the screw valve onto the air intake valve on the boat. Open the top cover of the screw valve, insert the inflation hose and inflate. Once inflation is finished, fasten the top cover of the screw valve.
If over inflation occurs, open the top cover of the screw valve, simply use the provided deflation pipe to deflate slightly. Hold the pipe until the desired pressure is reached and then fasten the top cover of the screw valve.



2. Safety Valve

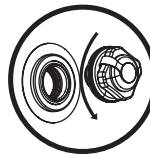
Open the safety valves and inflate. Close the safety valves after inflation and press them into the air chambers.
When inflating your boat, never let anyone sit, step or even lean on the boat.



Deflation

1.Screw Valve

Unscrew the screw valve from the boat.



2. Safety Valve

Pull out the safety valves from the air chambers. Open the safety valves and pinch the bottom to deflate.



Assembling of the boat

- Spread the boat on a level and even ground.
- Inflate the air chambers with a fitting-boat-pump.
- Never use compressed air!
- Inflate only as far that after inflating one can see some folding at the welding-seams. After inflation compare the height of the printed scale on the product with the attached scale to make sure reach the height shown in the right list. Inflate bottom chamber and other accessories such as seat until it is stiff to the touch but NOT hard. DO NOT OVER INFLATE.
- Take care that the boat has got the correct pressure. Pay attention to the both pressure scales on the type-plate and on the inside of the boat. Check after inflating of the boat with the enclosed scale, if the both printed scales on the boat are identically with the enclosed scale. As soon as both scales are identically, the boat is inflated in a correct way. If they are not identically, regulate the air by inflating or deflating. After you have inflated all air-chambers, check the pressure of all air chambers finally once again due to safety reason, because while inflating the other air chambers, the pressure of the first could change again. Check the pressure from time to time, because in the sun the pressure can grow and it must be balanced then to correct one. Use the enclosed rope and slip it through the available grommets. Then make a strong knot (as shown on the enclosed drawing).

Item	Product Inflated Size	Deflated Size	Inflated Size Chamber 1	Inflated Size Chamber 2	Inflated Size Chamber 3
61063E	76 in. x 43 in. (1.94 m x 1.10 m)	5cm/10cm	5.4cm	10.6cm	10.6cm
61064E	90 in. x 48 in. (2.28 m x 1.21 m)	5cm/10cm	5.4cm	11.1cm	11.1cm
61065E	100 in. x 50 in. (2.55 m x 1.27 m)	5cm/10cm	5.4cm	11.1cm	11.1cm
61066E	121 in. x 50 in. (3.07 m x 1.26 m)	5cm/10cm	5.4cm	11.3cm	11.3cm

How to install safety rope:

Please put safety rope through rope grommets and all round holes on tow handle in turn, to make safety rope surround each side of inflatable boat, then fasten safety rope.

Caution:

- Safety rope must go through rope grommets and all round holes of tow handle in a correct way.
- Please carefully check whether safety rope is in perfect condition and fastened tightly prior to each use.



Outboard Motor Installation (only for #61065E; #61066E)

- With the boat fully inflated and in the water, attach your outboard motor onto Engine Mount at the center of the Transom.
- Fix the motor in place with the Ropes through each hole on the transom.
- Overpowering a boat can result in serious injury, death or boat damage. The maximum motor power to be used see marking on the product.
Note: Read the instruction of outboard motor for correct installation and operation. Recommend using Bestway motor mount (#62069E) and motors (#65043E or #65045E) to the boat.

Repairs

- If there is a leak, spray water onto the boat surface and look for air bubbles. Soapy water works well.
- Clean and dry the damaged area. Apply a repair patch and smooth out any air bubbles.
- If there are bigger defects at the boat, give the boat to a special repair-shop. Changes in the technical progress are reserved.

Storage

- Remove the Oars from the oarlocks.
Note: Keep all accessories for future use.
- Carefully clean the boat using a mild soap with clean water.
Note: Do not use acetone, acid, and/or alkaline solutions.
- Use a cloth to gently dry all surfaces. Do not dry the product in direct sunlight.
Note: Also, never dry with equipment such as electric blowers. Doing so will cause damage and shorten the boat's life span.
- Deflate the hull chambers. Deflate all the hull chambers at the same time so the air-pressure drops together. This will prevent damage from occurring to the boat inner structures.
- Next deflate the floor.
- Fold the boat from front to back to remove additional air. You can also use a pump to drain any remaining air.
- Store in a cool, dry place and out of children's reach.

Registration

If you need to register your boat, please have the boat Hull Identification Number and model name ready and then visit www.bestwaycorp.com to obtain your Certificate of Origin, or you can send e-mail to service@bestwaycorp.us for the Certificate of Origin. The HIN is located on the starboard outboard side of the hull and near the stern.
PLEASE KEEP THIS MANUAL IN A SECURE PLACE, AND HAND IT OVER TO THE NEW OWNER WHEN YOU SELL THE CRAFT.

Bestway (USA) Inc.
3411 E. Harbour Drive, Phoenix, Arizona 85034,
United States of America
Tel: 1 480 838 3888
Fax: 1 480 304 3349
E-mail: info@bestwaycorp.us

Bestway®