

Bestway



Intertek
4006936

#54139E, #54145E

**110-120V~60Hz,
12A at 20°C**



SaluSpa™

OWNER'S MANUAL

www.bestwaycorp.com

Visit Bestway YouTube channel



S-S-004817

CONTENTS

1. Warning	P3
2. Specifications	P6
3. Assembly	P8
4. Operation	P10
5. Maintenance	P12
6. Troubleshooting	P14
7. Warranty	P15

WARNING IMPORTANT SAFETY INSTRUCTIONS

When using this electrical equipment, basic safety precautions should always be followed, including the following:

READ AND FOLLOW ALL INSTRUCTIONS.

WARNING – To reduce the risk of injury, do not permit children to use this product unless they are closely supervised at all times.

A wire connector is provided on this unit to connect a minimum 8 AWG (8.37 mm²) solid copper conductor between this unit and any metal equipment, metal enclosures of electrical equipment, metal water pipe, or conduit within 5 feet (1.5 m) of the unit.

DANGER – Risk of injury.

- a) Replace damaged cord immediately.
- b) Do not bury cord.
- c) Connect to a grounded, grounding type receptacle only.

WARNING – This product is provided with a ground-fault circuit-interrupter integrated with the power plug at the end of the cord. The GFCI must be tested before each use. With the product operating, push the test button on the GFCI and the product should not operate. Push the reset button on the GFCI and the product should now operate normally. When the product fails to operate in this manner, there is a ground current flowing indicating the possibility of an electrical shock. Disconnect the power until the fault has been identified and corrected.

DANGER – Risk of Accidental Drowning. Extreme caution must be exercised to prevent unauthorized access by children. To avoid accidents, ensure that children cannot use this spa unless they are supervised at all times.

DANGER – Risk of Injury. The suction fittings in this spa are sized to match the specific water flow created by the pump. Should the need arise to replace the suction fittings or the pump, be sure that the flow rates are compatible. Never operate spa if the suction fittings are broken or missing. Never replace a suction fitting with one rated less than the flow rate marked on the original suction fitting.

DANGER – Risk of Electric Shock. Install at least 5 feet (1.5 m) from all metal surfaces. As an alternative, a spa may be installed within 5 feet of metal surfaces if each metal surface is permanently connected by a minimum 8 AWG (8.37 mm²) solid copper conductor to the wire connector on the terminal box that is provided for this purpose.

DANGER – Risk of Electric Shock. Do not permit any electric appliance, such as a light, telephone, radio, or television, within 5 feet (1.5 m) of a spa.

WARNING – To reduce the risk of injury:

- a) The water in a spa should never exceed 40°C (104°F). Water temperatures between 38°C (100°F) and 40°C (104°F) are considered safe for a healthy adult. Lower water temperatures are recommended for young children and when spa use exceeds 10 minutes.
- b) Since excessive water temperatures have a high potential for causing fetal damage during the early months of pregnancy, pregnant or possibly pregnant women should limit spa water temperatures to 38°C (100°F).
- c) Before entering a spa, the user should measure the water temperature with an accurate thermometer since the tolerance of water temperature-regulating devices varies.

- d) The use of alcohol, drugs, or medication before or during spa use may lead to unconsciousness with the possibility of drowning.
- e) Obese persons and persons with a history of heart disease, low or high blood pressure, circulatory system problems, or diabetes should consult a physician before using a spa.
- f) Persons using medication should consult a physician before using a spa since some medication may induce drowsiness while other medication may affect heart rate, blood pressure, and circulation.

WARNING: TO AVOID ELECTRIC SHOCK, DO NOT USE THE SPA WHEN IT IS RAINING.

WARNING: Water attracts children; Always attach a spa cover after each use.

WARNING: TO REDUCE THE RISK OF INJURY: Never add water that is higher than 40°C (104°F) into the Spa.

CONSULT YOUR PHYSICIAN FOR RECOMMENDATIONS.

CAUTION: The spa should not be setup or left out in temperatures lower than 4°C (40°F).

CAUTION: Do not use the spa alone.

CAUTION: Always enter and exit the spa slowly and cautiously. Wet surfaces are slippery.

CAUTION: To avoid damage to the pump, the spa must never be operated unless the spa is filled with water.

CAUTION: Immediately leave spa if the user feels uncomfortable or sleepy.

NOTE: Please examine equipment before use. Notify Bestway® at the customer service address listed on this manual for any damaged or missing parts at the time of purchase.

Verify that the equipment components represent the model that you had intended to purchase.

NOTE: This equipment has been tested and found to comply with the limits for a Class B digital device, pursuant to part 15 of the FCC Rules. These limits are designed to provide reasonable protection against harmful interference in a residential installation. This equipment generates, uses and can radiate radio frequency energy and, if not installed and used in accordance with the instructions, may cause harmful interference to radio communications. However, there is no guarantee that interference will not occur in a particular installation. If this equipment does cause harmful interference to radio or television reception, which can be determined by turning the equipment off and on, the user is encouraged to try to correct the interference by one or more of the following measures:

- Reorient or relocate the receiving antenna.
- Increase the separation between the equipment and receiver.
- Connect the equipment into an outlet on a circuit different from that to which the receiver is connected.
- Consult the dealer or an experienced radio/TV technician for help.

SAVE THESE INSTRUCTIONS

ASSEMBLY: THE PROVIDED WARNING LABEL



REDUCE THE RISK OF ELECTROCUTION

1. NEVER PLACE AN ELECTRIC APPLIANCE WITHIN 5 FEET OF SPA.

REDUCE THE RISK OF CHILD DROWNING

1. SUPERVISE CHILDREN AT ALL TIMES.
2. ATTACH SPA COVER AFTER EACH USE.

REDUCE THE RISK OF OVERHEATING

1. CHECK WITH A DOCTOR BEFORE USE IF PREGNANT, DIABETIC, IN POOR HEALTH, OR UNDER MEDICAL CARE.
2. EXIT IMMEDIATELY IF UNCOMFORTABLE, DIZZY, OR SLEEPY. SPA HEAT CAN CAUSE HYPERTHERMIA AND UNCONSCIOUSNESS.
3. SPA HEAT IN CONJUNCTION WITH ALCOHOL, DRUGS, OR MEDICATION CAN CAUSE UNCONSCIOUSNESS.

WHEN PREGNANT, SOAKING IN HOT WATER FOR LONG PERIODS CAN HARM YOUR FETUS. MEASURE WATER TEMPERATURE BEFORE ENTERING.

1. DO NOT ENTER SPA IF WATER IS HOTTER THAN 100°F (38°C)
2. DO NOT STAY IN SPA FOR LONGER THAN 10 MINUTES.

NOTE: The warning label must be posted near your spa in a readable position during using your spa.

1. Take out the warning label from the accessory kit.
2. Carefully peel the warning label.
3. Affix the warning label.

To order the warning label, please contact your local Bestway Aftersales Service.

WARNING FOR ELECTRIC AIR PUMP (For Palm Springs HydroJet)

1. Motor run time should not exceed 20 minutes. Operator should allow motor to cool for 10 minutes between uses.
2. This appliance has a polarized plug (one blade is wider than the other.) To reduce the risk of electric shock, this plug is intended to fit in a polarized outlet only one way, if the plug does not fit fully in the outlet, reserve the plug, if it still does not fit, contact a qualified electrician. Do not attempt to defeat this safety feature.
3. For adult use only.
4. Inflation and deflation ports should be kept unobstructed during use.
5. Product must be stored in a dry location.
6. Please comply with local disposal codes when discarding the pump.

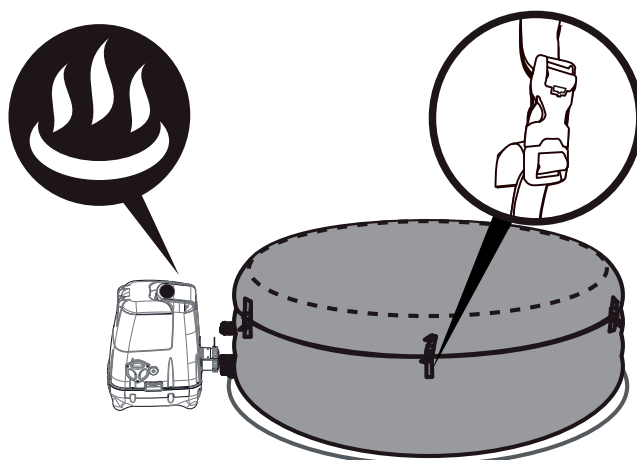
CAUTION:

TO AVOID THE RISK OF ELECTRIC SHOCK, DO NOT EXPOSE TO WATER OR RAIN.
FOR INDOOR USE ONLY.
FOR HOUSEHOLD USE ONLY.

IMPORTANT !

To reach 40°C (104°F), the heating duration required is based on the starting water temperature and ambient temperature. The data below is purely for reference. To display the current water temperature, run the filter system for at least a minute.

Ambient Temperature	Water Temperature	Set Temperature	Heating Duration
10°C(50°F)	10°C(50°F)	40°C(104°F)	32h
15°C(59°F)	15°C(59°F)	40°C(104°F)	26h
20°C(68°F)	20°C(68°F)	40°C(104°F)	20h
25°C(77°F)	25°C(77°F)	40°C(104°F)	14h
30°C(86°F)	30°C(86°F)	40°C(104°F)	9h



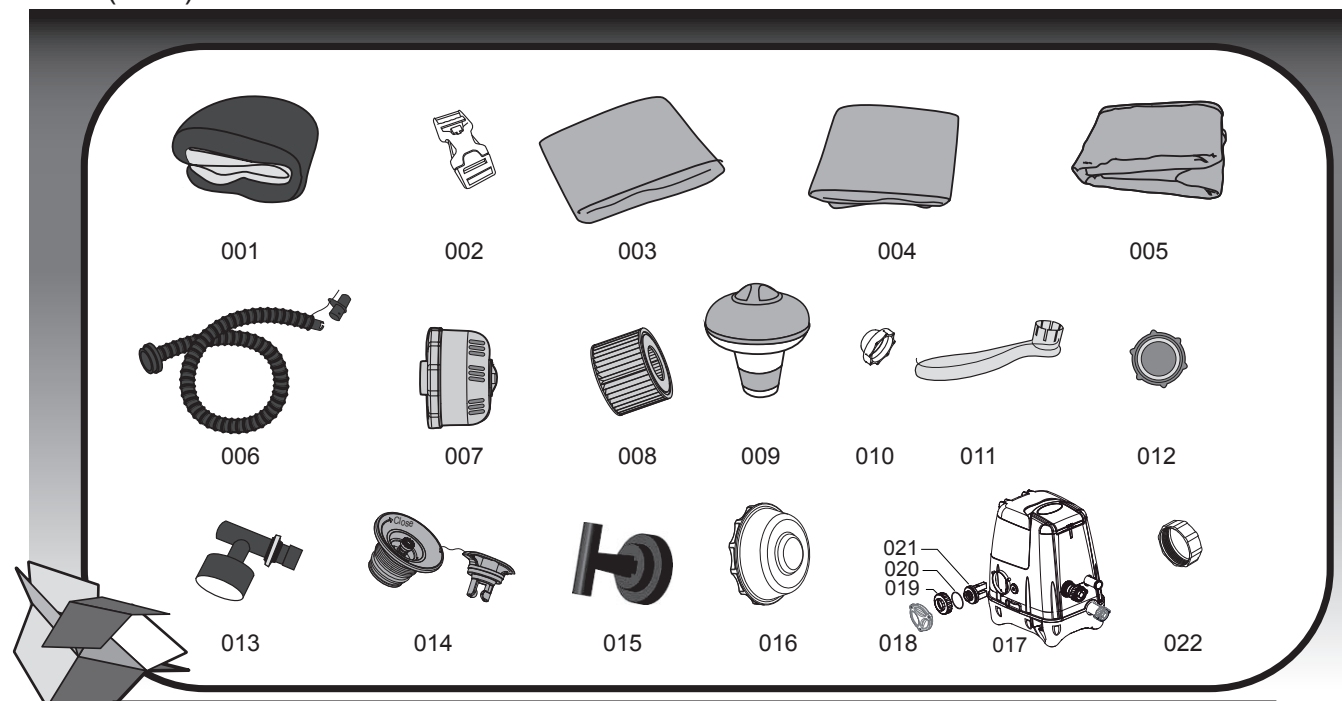
Be sure to cover the spa with the spa cover whenever the heating function is activated. Leaving the spa uncovered will increase the heating duration required. Please do not use the spa when ambient temperature is lower than 4°C (39°F).

SAVE THESE INSTRUCTIONS

SPECIFICATIONS FOR SaluSpa™ HAWAII HYDROJET PRO (#54139E)

Capacity:	4-6 Adults	Massaging Turbo Blower:	6.5A	Jet Pump:	12A
Water Capacity:	210 gal (795 L)	Heat Element:	11.3A at 68°F	Actual Water Flow:	1,211 L/h (320 gal/h)
Inflated Size:	1.80m x 1.80m x 71cm (71" x 71" x 28")	Pump:	0.7A Circulation Filter Pump	Power Rate:	110-120V AC, 12A at 68°F
Filled Weight:	1,911 Lb (867 kg)	Temperature Capacities:	40°C (104°F)	Working Pressure:	1.2PSI (0.08bar)
Increased Heat Rate:	Approximately 1.0-1.5°C/h (2-3°F/h)	Jet Nozzles:	8PCs	Saltwater System:	2A

NOTE: The above heating rate is in reference to a lab test with an ambient temperature of 25°C (77°F) and above.

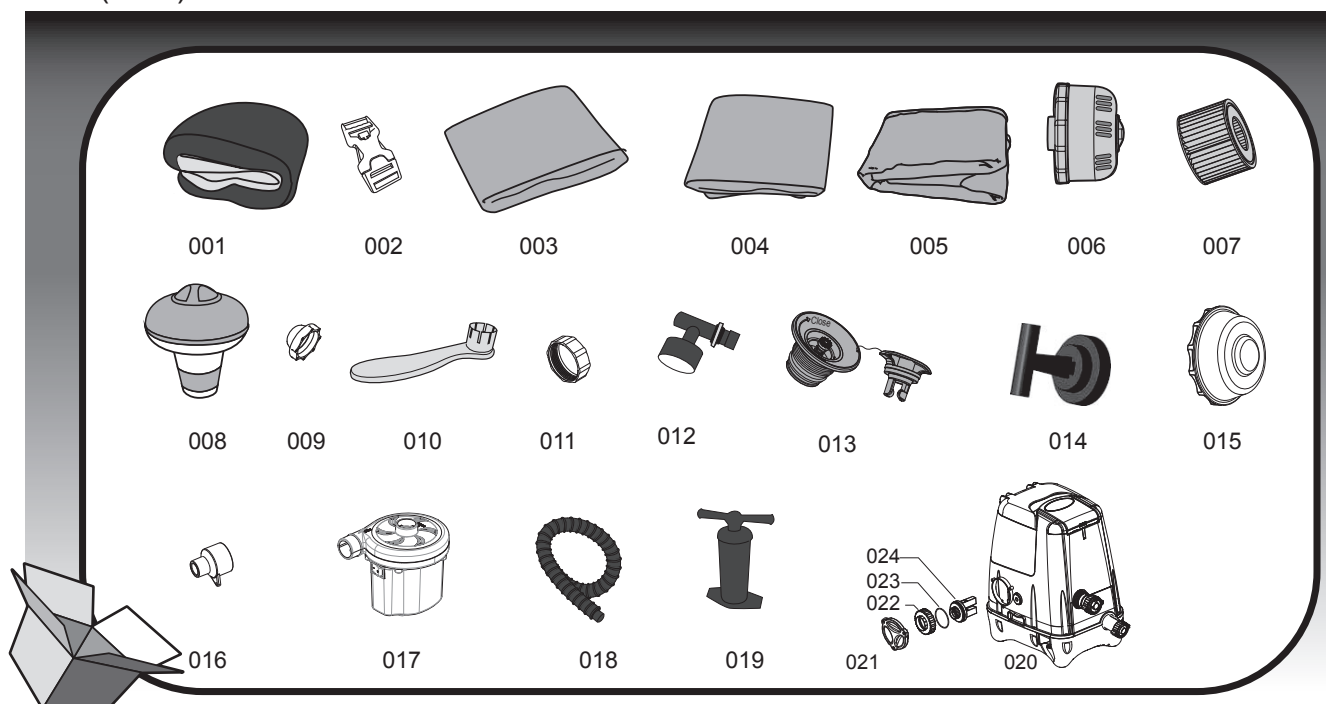


Part N.	Part Code	Description	QTY
001	54139TASS17	Pool Liner	1
002	F6414ASS16	Buckle	8
003	P5600GASS17	Leatheroid Cover	1
004	54138GASS17	Inflatable Cover	1
005	58371(H)S16	Ground Mat	1
006	P6930	Inflation Hose	1
007	P6653	Filter Set	2
008	58323	Filter Cartridge(VI)	2
009	58426S17	Chemical Floater	1
010	P6575	Stopper (For Filter Outlet)	1
011	F6H189	Wrench (For Air Valve)	1
012	P6611	Cover Adapter A	1
013	P61199	Pressure Gauge	1
014	P6H971	Inflation Valve	1
015	P61385	Wrench (For Salt Chlorinator System)	1
016	P61290	Stopper (For Water Jet Inlet)	2
017	P4H126USASS17	Spa Pump	1
018	P61334	Cap	1
019	P61386	Electrolytic Cell Nut	1
020	P61388	Electrolytic Cell O-RING	1
021	P61387	Electrolytic Cell	1
022	P61587	Spa pool Stopper	2

SPECIFICATIONS FOR SaluSpa™ PALM SPRINGS HYDROJET (#54145E)

Capacity:	4-6 Adults	Saltwater System:	2A	Jet Pump:	12A
Water Capacity:	210 gal (795 L)	Heat Element:	11.3A at 68°F	Actual Water Flow:	1,211 L/h (320 gal/h)
Inflated Size:	1.96m x 71cm (77" x 28")	Pump:	0.7A Circulation Filter Pump	Power Rate:	110-120V AC, 12A at 68°F
Filled Weight:	1,905 Lb (864 kg)	Temperature Capacities:	40°C (104°F)	Working Pressure:	1.2PSI (0.08bar)
Increased Heat Rate:	Approximately 1.0-1.5°C/h (2-3°F/h)	Jet Nozzles:	8PCs	AC Air Pump:	0.95A

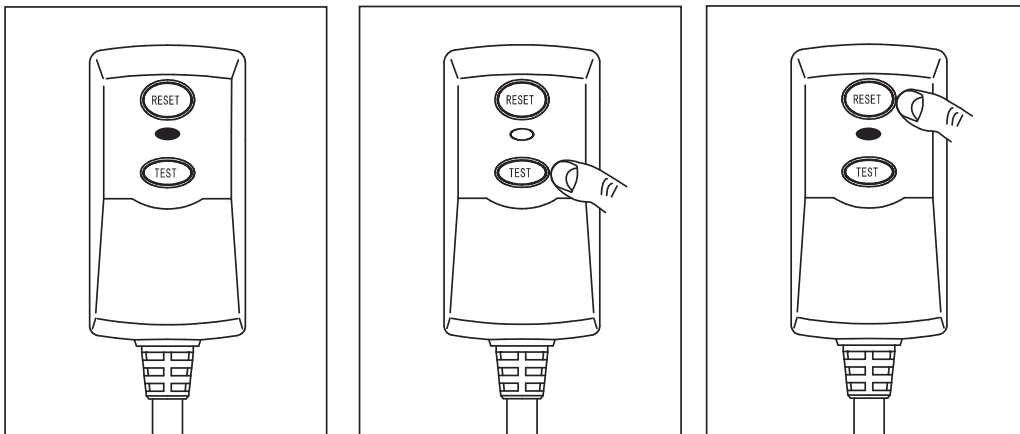
NOTE: The above heating rate is in reference to a lab test with an ambient temperature of 25°C (77°F) and above.



Part N.	Part Code	Description	QTY
001	54145TASS17	Pool Liner	1
002	F6414ASS16	Buckle	6
003	P5611GASS17	Leatheroid Cover	1
004	54144GASS17	Inflatable Cover	1
005	58321(H)S15	Ground Mat	1
006	P6653	Filter Set	2
007	58323	Filter Cartridge(VI)	2
008	58426S17	Chemical Floater	1
009	P6575	Stopper	1
010	F6H189	Wrench (For Air Valve)	1
011	P61587	Spa pool Stopper	2
012	P61199	Pressure Gauge	1
013	P6H971	Inflation Valve	1
014	P61385	Wrench (For Salt Chlorinator System)	1
015	P61290	Stopper (For Water Jet Inlet)	2
016	P61330	AC Air Pump Hose Adapter	1
017	P61328	AC Air Pump	1
018	P61327	Inflation Hose	1
019	P61326	Hand Pump	1
020	P4H128USASS17	Spa Pump	1
021	P61334	Cap	1
022	P61386	Electrolytic Cell Nut	1
023	P61388	Electrolytic Cell O-RING	1
024	P61387	Electrolytic Cell	1

Pump Test

GFCI Test



1. Plug the GFCI into a power outlet, the indicator turns red.
2. Press the test button, the indicator turns off.
3. Press the reset button, the indicator turns red and the spa is ready for use.

WARNING: The GFCI plug must be tested before each use to avoid risk of electric shock.

WARNING: Before inserting plug into a power outlet, make sure the current rate of the power outlet is suitable for the pump.

WARNING: Do not use the pump if this test fails and contact our Aftersales Service.

ASSEMBLY

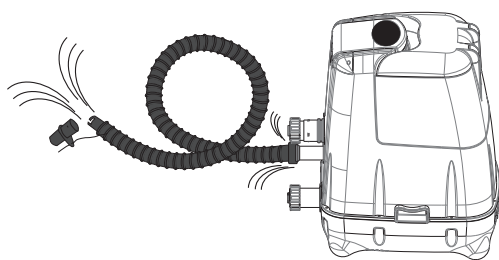
NOTE: Only the Hydro-Jet Pro SPA has the massage system button. When inflating, you will notice that air will be expelled from the area where the air hose connects to the pump, this is normal and prevents damage due to over-inflation.

NOTE: Do not use an air compressor to inflate the pool.

NOTE: Do not drag the pool on rough ground as this may cause damage to the pool liner.

NOTE: Inflation time is for reference only.

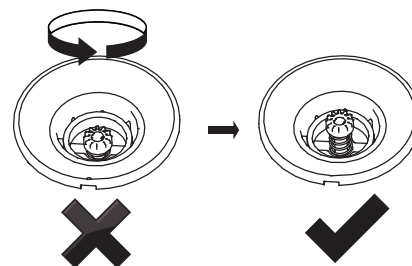
NOTE: Pressure gauge is for inflation purpose only, and the value shown by the pressure gauge is just for reference. It should not be used as a precision instrument.



Air Valve Check

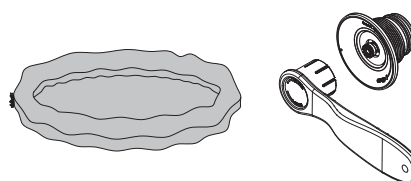
Always check the air valve carefully before inflation to ensure there is not an air leak. If the air valve is loose, use the provided wrench to fasten the air valve following these steps:

With one hand, hold the backside of the air valve from the inner side of the spa wall and turn the wrench clockwise.

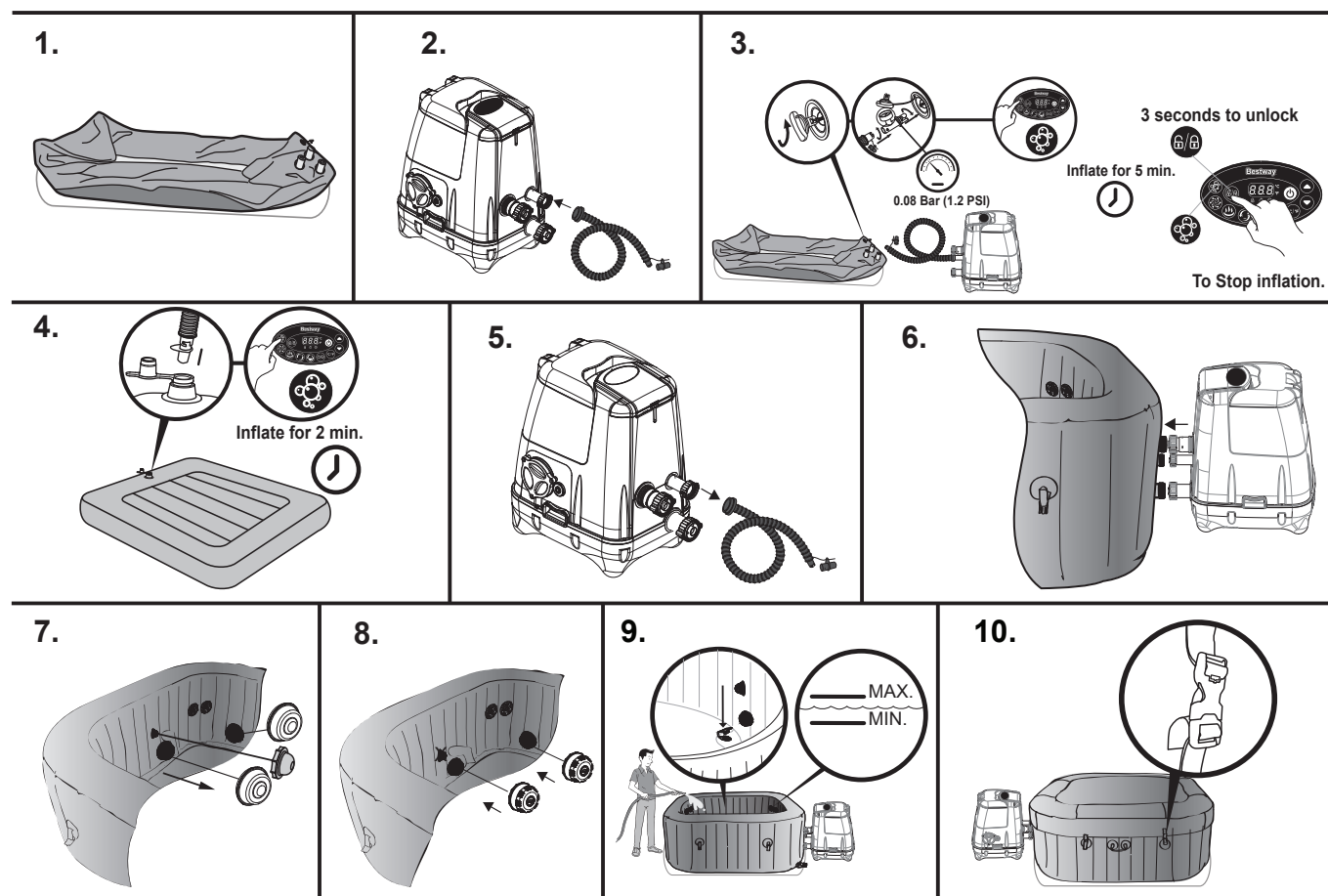


NOTE:

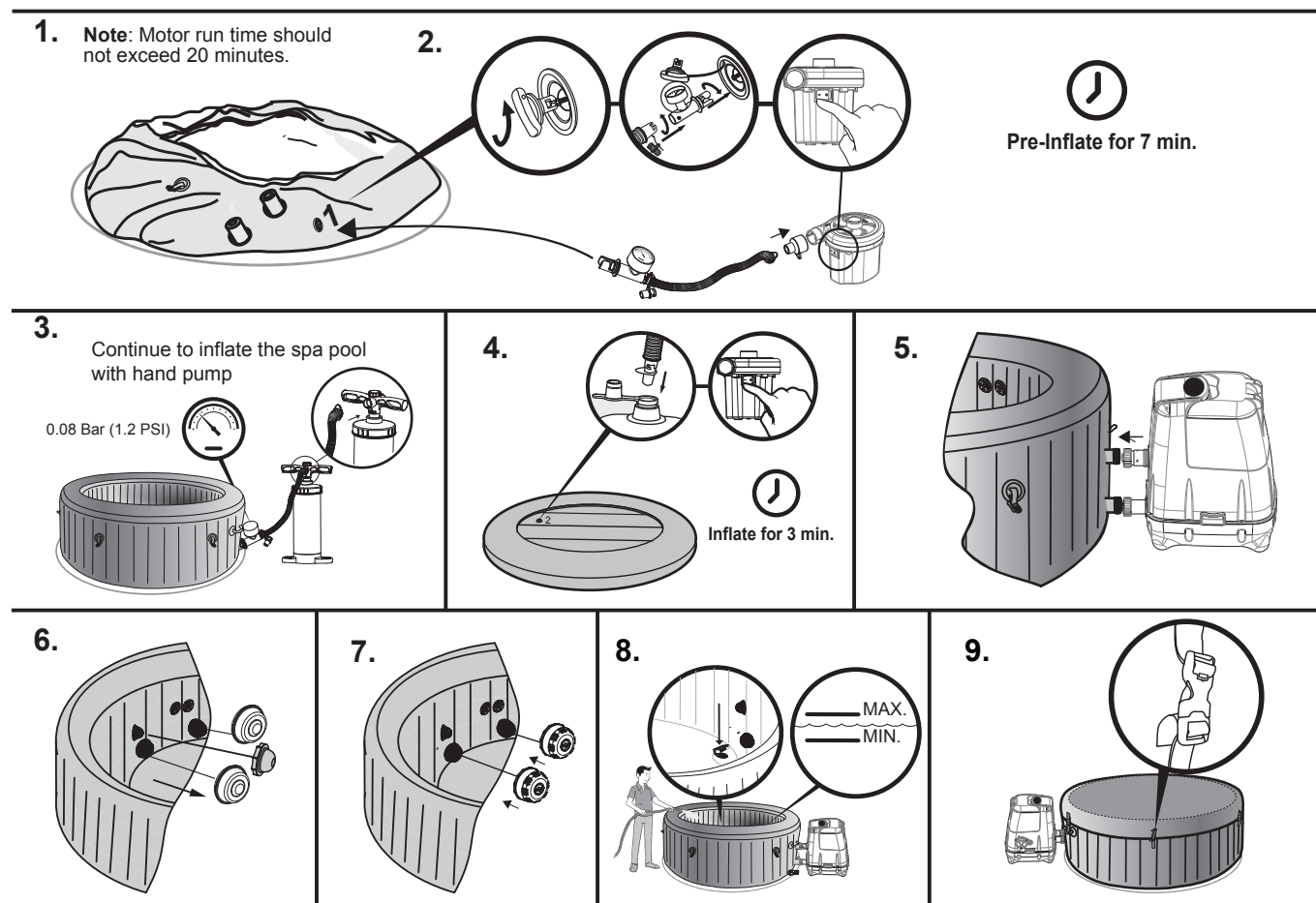
1. Do not over tighten.
2. Do not adjust the air valve connector when the spa is in use.



ASSEMBLY FOR HAWAII HYDROJET PRO (#54139E)



ASSEMBLY FOR PALM SPRINGS HYDROJET (#54145E)

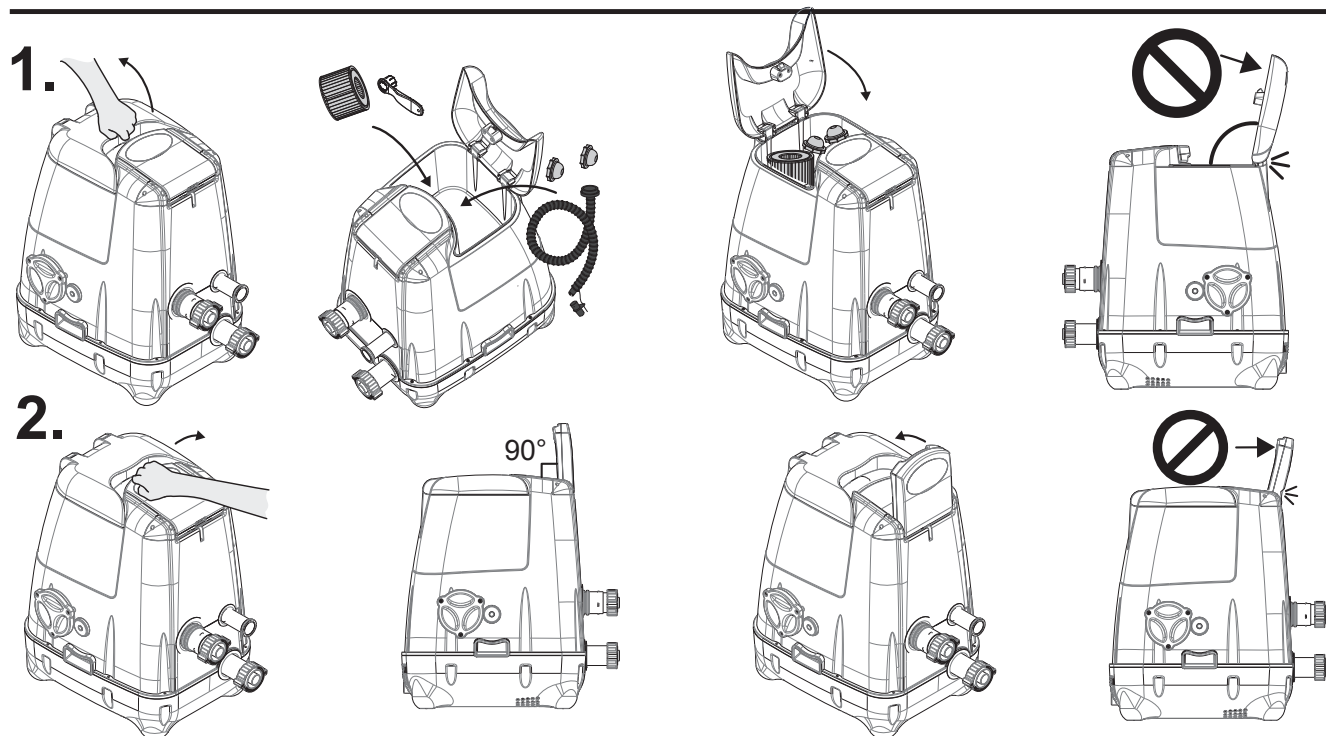


OPERATION

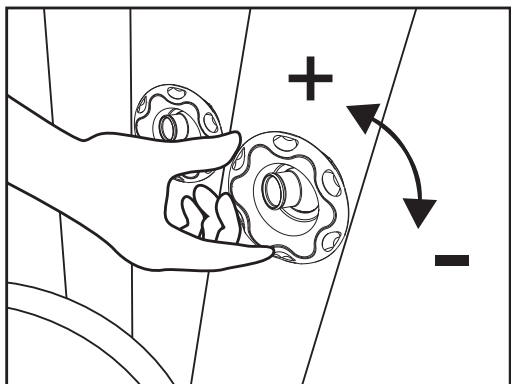
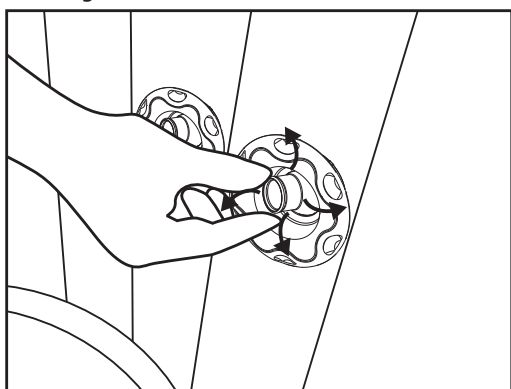
Hyperthermia occurs when the internal temperature of the body reaches a level several degrees above the normal body temperature of 37°C (98.6°F). The symptoms of hyperthermia include an increase in the internal temperature of the body, dizziness, lethargy, drowsiness, and fainting. The effects of hyperthermia include failure to perceive heat; failure to recognize the need to exit spa or hot tub; unawareness of impending hazard; fetal damage in pregnant women; physical inability to exit the spa or hot tub; and unconsciousness resulting in the danger of drowning.

WARNING: THE USE OF ALCOHOL OR DRUGS CAN GREATLY INCREASE THE RISK OF FATAL HYPERTHERMIA IN HOT TUBS AND SPAS.

WARNING: WATER TEMPERATURE IN EXCESS OF 38°C (100°F) CAN BE INJURIOUS TO YOUR HEALT.



3. Adjustment of Jet Nozzle



4. Instruction of Salt Chlorinator System

NOTE: To use the Salt Chlorinator System, add salt to the water following the steps below.

- (1). Turn on the HydroJet System to start the water circulation.
- (2). Keep the Salt Chlorinator System turned off.
- (3). Add 4.4 lbs / 2 kg of salt into the spa pool gradually, use only sodium chloride (NaCl) salt that is at least 99.9% pure or water conditioning salt pellets (the compressed forms of evaporated salt - it will take longer to dissolve). Keep HydroJet System running for 5 min.
- (4). When all the salt is dissolved, turn on the Salt Chlorinator System and set the working duration (refer to Salt Chlorinator System Button instruction).

NOTE: Attach the spa cover during the Salt Chlorinating process.

E11 Add Salt if Salt Level is too low

If not enough salt has been added, the panel displays an "E11" error code.

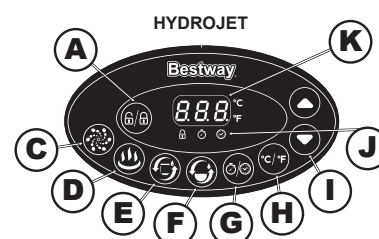
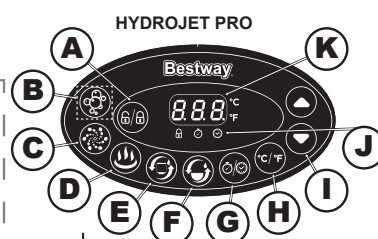
- (1). Unplug the spa and plug it back in, then press "Reset".
- (2). Turn on the HydroJet System.
- (3). Gradually add and dissolve 1.1 lbs/0.5 kg of salt.
- (4). Start the Salt Chlorinator System.
- (5). If the "E11" Code remains, follow the above steps until the "E11" error code disappears.

E10 Remove Salt if Salt level is too high

If too much salt has been added, the panel displays an "E10" error code.

- (1). Unplug the spa.
- (2). Drain and refill approximately 20% of the water.
- (3). Start the Salt Chlorinator System.
- (4). If the "E10" Code remains, follow the above steps until the "E10" alarm disappears.

- A Lock/Unlock Button**
The pump has a 5-minute auto-lock. The LED light will dim out when the pump is locked (no function is activated). To lock or unlock the pump, place a finger over the lock/unlock button for 3 seconds.
- B Massage System Button (For Hydro-Jet Pro)**
Use this button to activate the massage system, which has a 30-minute auto-shutoff feature. The light above the massage system button displays red when activated.
- IMPORTANT:** Do not run the massage system when the cover is attached. Air can accumulate inside the spa and cause irreparable damage to the cover and bodily harm.
NOTE: Heat and massage system work together to create a warm massage experience.
- C HydroJet System Button**
This button turns the water pump on and off.
The light above the HydroJet system button displays red when activated.
Note: The system will shut off automatically after 1 hour.
Note: Do not dry run the HydroJet System.
- D Heat Button**
Use this button to activate the heating system. When the light above the heat button is red, the heating system is activated. When the light is green, the water is at the set temperature and the heating system is at rest.
NOTE: If the heating system is activated, the filtration system will automatically start.
NOTE: After turning off the heating system, the filtration system will continue to operate.
- E Water Filter Button**
This button turns the filter pump on and off.
The light above the Water Filter Button displays red when activated.
NOTE: The built-in hard water treatment function works automatically.
- F Salt Chlorinator System Button**
Use this button to turn on the Salt Chlorinator System and set the working duration. You can set the working duration from 3 hours to 5 hours to 8 hours by pushing the Salt Chlorinator System Button. After setting the working duration, the Salt Chlorinator System will start to work automatically.
NOTE: Do not press any buttons on the panel and attach the SPA cover during the chlorinating progress. You can re-adjust the working duration by pushing the Salt Chlorinator System Button.
NOTE: Test the water regularly and make sure the free chlorine level is between 2-4 ppm.
- G Power-Saving Timer Button**
This is a newly added function, designed to help avoid wasting power by setting the time and duration of the heating cycle for the spa.
This way, you can enjoy your spa at the time you desire, without needing to leave the heater on at all times.
- STEP 1: Set the heating duration**
1. Press the button until the LED starts to flash.
2. Press the or button to adjust the heating duration (From 1-48 hours).
3. Press the button again to confirm the heating duration.
- STEP 2: Set the number of hours FROM NOW when the heater will activate**
1. After setting the heating duration, the LED starts to flash.
2. Press the or button to adjust the hours until time of activation (From 0-99 hours).
3. Press button again or simply touch nothing for 10 seconds to confirm the setting. The LED will light steadily, and the countdown to heater activation will begin.
- To modify the timer settings:** Press the button and use the or button to adjust.
Cancel the setting: Press the button for 2 seconds.



- NOTE:** After setting, the screen flashes the current temperature and time alternately.
- NOTE:** Timer adjustment (amount of time with the heater ON) may be set from 1 to 48 hours; Reservation time adjustment (the number of hours FROM NOW when the heater will begin to function) may be set from 0 to 99 hours. If the timer is set at 0 hour, it means the Timer function is not set.
Note that the timer is one time per use - the user sets the duration of the heating cycle, and how many hours from now the heating cycle begins. The timer does NOT repeat until reset.
- H Celsius/Fahrenheit Toggle**
 The temperature can be displayed in either Celsius or Fahrenheit.
- I Temperature Adjustment Buttons**
 Pressing the Temperature Increase or Decrease buttons will cause the LED to flash. When it is flashing you can adjust to the desired temperature setting. If you hold these buttons down, the values will rapidly increase or decrease. The new and desired temperature setting will remain on the LED display for 3 seconds to confirm the new value.

NOTE: The default temperature is 35°C (95°F).
NOTE: Temperature adjustment ranges from 20°C (68°F) to 40°C (104°F).
- J Power-Saving Timer LED**
 This LED flashing means you are setting the heating duration. The light will be on when the heating function starts to work.
 This LED flashing means you are setting the number of hours FROM NOW when the heater will activate. When the light is on, the Power-Saving Timer function is set.
- K LED Display**
 Once powered up, the LED displays the current water temperature automatically.
 After 72 hours of filtration (without using the power saving timer function), the pump will hibernate and flash "End" with the current water temperature. When the pump is hibernating both the heating and water filter functions are disabled. To re-activate the pump press lock/unlock button for 3 seconds.
- NOTE:** The water heat rate may change in the below conditions:
· When the outdoor temperature is below 15°C (59°F).
· If the cover is not in position when the heating function is activated.
- NOTE:** To display the current water temperature, run the filter system for at least a minute. The water temperature as tested by an external thermometer may vary from the temperature as displayed on the spa panel due to the differing positions of the measurement devices.

Alarms

Causes	Reasons	Solutions
The water flow sensors work without pressing the filter or heat button.	1. The water flow sensor flags didn't fall back into the correct position. 2. The water flow sensors are broken.	1. Unplug the pump, strike the side of the pump firmly (but not violently), and plug it back in. 2. Contact your local Bestway Aftersales Service Center for instructions.
After starting or during the functions of filtering or/and heating, the water flow sensors do not detect water flow.	1. You forgot to remove the 2 stopper caps from inside the pool. 2. The filter cartridges are dirty. 3. Activate the filter or heat system and put your hand in front of the outlet pipe inside the pool to check if you can feel water flowing out. a. If no water flows out the water pump is broken. b. Water flows out but the alarm appears, the water flow sensors are broken.	1. Remove the two stopper caps before starting the heating system. Refer to the Assembly section in the User's Manual. 2. Remove the filter set from inside the pool and push the filter or heat button. If no alarm appears, clean or change the filter cartridges and re-install the filter set inside the pool. 3. Contact your local Bestway Aftersales Service Center for instructions.
The pump's thermometer reads the water temperature below 4°C (40°F).	1. The water temperature is lower than 4°C (40°F). 2. If the water temperature is higher than 7°C (44.6°F), the pump's thermometer is broken.	1. The spa is not designed to operate with water temperatures lower than 4°C (40°F). Unplug the pump and only re-start the pump when the water temperature reaches 6°C (43°F). 2. Contact your local Bestway Aftersales Service Center for instructions.
The pump's thermometer reads the water temperature over 48°C (119°F).	1. The water temperature is over 48°C (119°F). 2. If the water temperature is lower than 45°C (113°F), the pump's thermometer is broken.	1. The spa is not designed to operate with water temperatures greater than 40°C (104°F). Unplug the pump and only re-start the pump when the water temperature reaches 38°C (100°F) or lower. 2. Contact your local Bestway Aftersales Service Center for instructions.
The pump's thermometer connections have issues.	1. The pump's thermometer connectors are not working properly. 2. The pump's thermometer is broken.	Contact your local Bestway Aftersales Service Center for instructions.
The thermal cut-out cut off.	1. The ambient temperature is over 50°C (122°F) or the pump is directly under the sunshine. 2. The thermal cut-out is broken.	1. Unplug the pump, and put the plug in a dry, cool place. Only re-start the pump when the water temperature reaches 34°C (93.2°F) or lower. 2. Contact your local Bestway Aftersales service point to get instructions.
104°C (219°F) Fuse fault.	The fuse is disconnected.	Contact your local Bestway Aftersales Service Center for instructions.
High salt alarm.	Too much salt has been added or too much water has evaporated.	1. Follow the instructions in operation part to remove the salt. 2. Contact your local Bestway Aftersales Service Center for instructions.
Low salt alarm.	Not enough salt for sanitizing.	1. Follow the instructions in operation part to add salt in the water. 2. Contact your local Bestway Aftersales Service Center for instructions.
Signal line disconnected.	The signal line between control panel and power board is not well connected.	Contact your local Bestway Aftersales Service Center for instructions.

MAINTENANCE

NOTE: Your spa will require additional air to be added from time to time. Changes in temperature from day to night will change the pressure in the spa and may cause a certain amount of deflation. Please follow the Assembly instructions and drain the spa before inflating to the accurate pressure needed.

CAUTION: YOU MUST ENSURE THE PUMP IS UNPLUGGED BEFORE BEGINNING SPA MAINTENANCE.

Electric Air Pump Maintenance

1. Use a dry cloth to gently clean all surfaces.
2. Store in a cool, dry place and out of children's reach.

Filter Cartridge Maintenance

NOTE: To ensure your spa water stays clean, check and clean your filter cartridges every day - follow the steps below.

NOTE: We recommend changing your filter cartridges every week.

Water Maintenance

To keep your SPA water clean, chemical balance is necessary. Merely cleaning the filter cartridge is not sufficient for this purpose. Please refer to either of below recommendations:



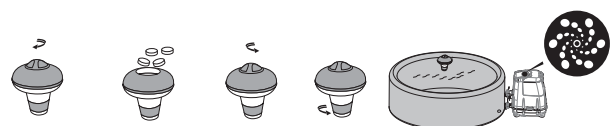
1. Use the built-in Salt Chlorinator System regularly. The salty water is passed through the chlorinator's electrolytic cell to produce chlorine which is dissolved instantly in the water. The chlorine immediately starts to destroy bacteria, algae and oxidize other organic materials.
The first time you use it, we suggest you set the operation time at 8 hours with fresh water and use a test strip to make sure the Free Chlorine is between 2-4ppm. Increase the operation time if the water temperature is high or if the SPA is uncovered, use the Chlorinator System every 24 hours if the SPA is in use, the operation time depends on the test results and how often you use the SPA.
NOTE: Test the Free Chlorine concentration twice a day when you first use the Chlorinator System. When the Free Chlorine concentration becomes stable, test once a week to make sure the Free Chlorine is between 2-4 ppm.

NOTE: Do not use the SPA when the Free Chlorine concentration is higher than 4 ppm.

2. Use pool chemicals to maintain water chemistry-dispense chlorine or bromine tablets (do not use granules) with the chemical floater.

Using chemical tablets (not included)

(Reference: Trichlorinated isocyanuric acid 3-6g)



Using chemical liquid (not included)

(Refer to the instructions of the liquid chemicals purchased)



The water should be changed about every 3 days or longer with proper chemical maintenance. Water quality is influenced by frequency of use, persons using the spa and general maintenance.

NOTE: We recommend you take a shower before using your SaluSpa. Cosmetic products, lotions, and other residues on the skin can quickly degrade water quality.

NOTE: Remove the chemical floater from the spa when the spa is in use

IMPORTANT: After performing chemical maintenance and before using the spa, use a test kit (not included) to test the water chemistry.

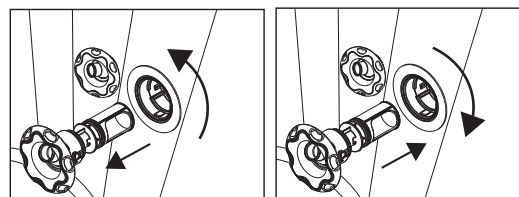
We recommend maintaining your water as per the table below.

pH	Total Alkalinity	Free Chlorine
7.4-7.6	80-120 ppm	2-4 ppm

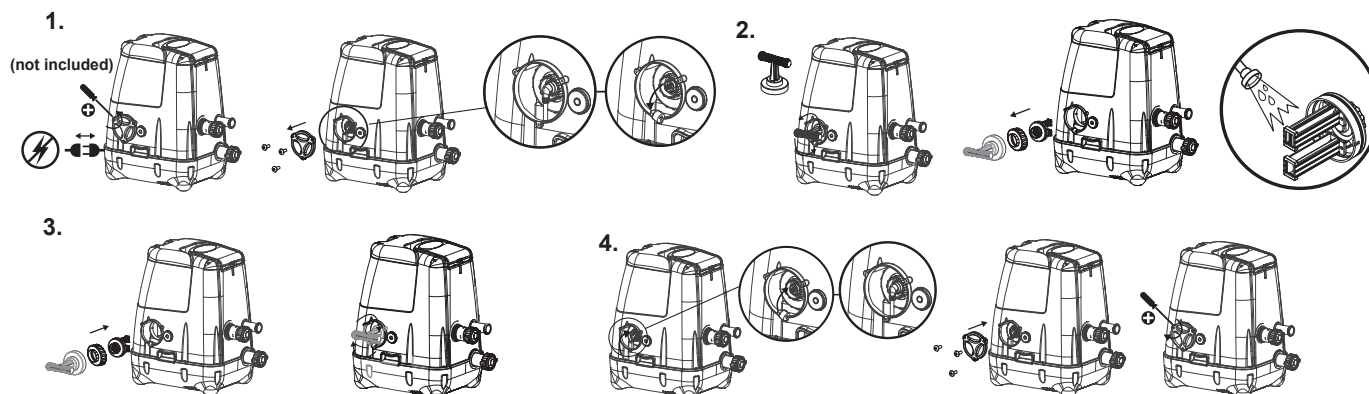
NOTE: Damage resulting from chemical imbalance is not covered by the warranty. Pool chemicals are potentially toxic and should be handled with care. There are serious health risks from chemical vapors and the incorrect labeling and storage of chemical containers. Please consult your local pool supply retailer for more information about chemical maintenance. Pay close attention to the chemical manufacturer's instructions. Spa damage resulting from misuse of chemicals and mismanagement of spa water is not covered by the warranty.

Jet Nozzle Maintenance

1. Twist until hearing a "click" sound, and pull out the Jet Nozzle to clean the debris.
2. Insert and twist clockwise to put it back.



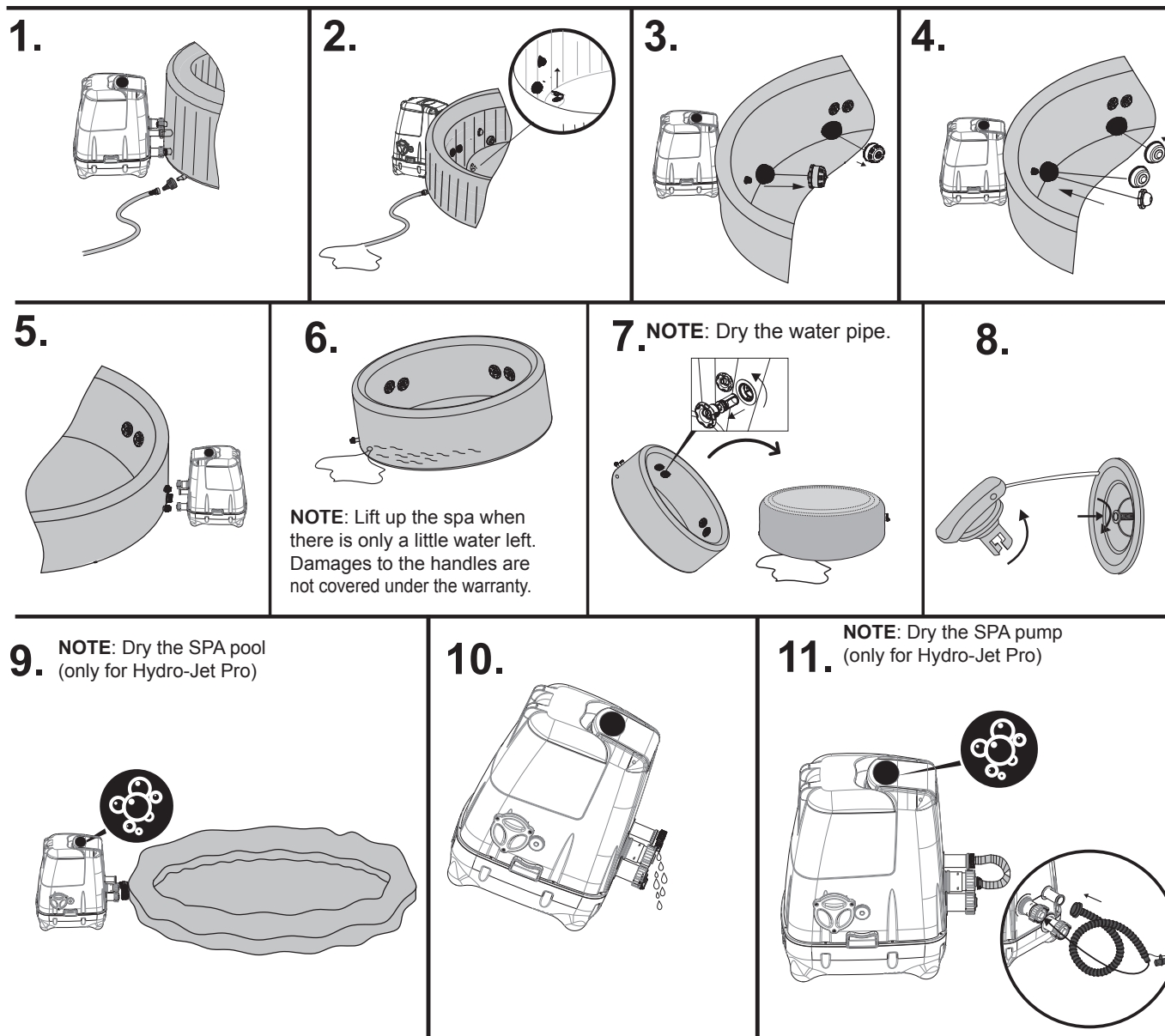
Salt Chlorinator System Maintenance



NOTE: If the deposits remain after washing, place the electrolytic cell in a container, pour kitchen grade vinegar into the container to soak the titanium plate for about 4 hours and then wash again. Repeat the operation if necessary.

Draining the Spa

NOTE: Drawings for illustration purposes only. May not reflect actual product. Not to scale.



Cleaning the spa Detergent residues and dissolved solids from bathing suits and chemicals may build up on the spa walls. Use soap and water to clean the walls and rinse thoroughly.

NOTE: DO NOT use hard brushes or abrasive cleaners.

Spa Repair

For Spa inflatable cover

If the spa is torn or punctured, use the provided heavy-duty repair patch.

1. Clean area to be repaired.
2. Carefully peel patch.
3. Press patch over area to be repaired.
4. Wait 30 minutes before inflation.

For Spa Liner

If the spa is torn or punctured, use the provided PVC repair patch and glue (not included) following these steps:

1. Clean and dry the area to be repaired.
2. Cut the provided PVC patch to appropriate size.
3. Use glue (not included) to coat the one side of the newly cut patch. Make sure the glue is evenly distributed.
4. Wait for 30 seconds and then place the cut patch with glue over the damaged area.
5. Smooth out any bubbles of air that may be trapped underneath, and press firmly for two minutes.
6. Wait 30 minutes before inflation.
7. The product is once again ready for use. Repeat this process should further leaks occur.

SaluSpa Storage



Make sure the spa and pump are completely dry. This is essential to extend the life of the spa. We recommend using the pump to blow dry the spa, pump and pipes. Remove the filter sets and discard the used filter cartridges. Re-attach the two stopper caps onto the spa's inlet and outlet valves. It is recommended you store the spa in its original package in a warm dry place.

NOTE: Plastic becomes brittle and susceptible to breaking when exposed to sub-zero temperatures. Freezing can severely damage the spa. Improper winterization of your spa can void your warranty.



Meaning of crossed-out wheeled dustbin symbol: Do not dispose of electrical appliances as unsorted municipal waste, use separate collection facilities. Contact your local government for information regarding the collection systems available. If electrical appliances are disposed of in landfills or dumps, hazardous substances can leak into the groundwater and get into the food chain, damaging your health and well-being. When replacing old appliances with new ones, the retailer is legally obligated to take back your old appliance for disposals free of charge.

TROUBLESHOOTING Bestway strives to provide the most trouble-free spas on the market. If you experience any problems whatsoever, do not hesitate to contact Bestway or your authorized dealer. Here are some helpful tips to help you to diagnose and rectify some common sources of trouble.

Problems	Probable Causes	Solutions
Pump does not operate	<ul style="list-style-type: none"> - Power failure - Power circuits broken 	<ul style="list-style-type: none"> - Check power source - Contact your local Bestway Aftersales Service Center for instructions
Pump does not heat properly	<ul style="list-style-type: none"> - Temperature set too low - Dirty filter cartridge - The thermal cut-out cuts off - The heating element has failed 	<ul style="list-style-type: none"> - Set the heating system to a higher temperature (refer to Pump Operation section) - Clean/replace the Filter Cartridge (refer to Filter Cartridge Cleaning and Replacement section) - Re-start when the temperature is below 38°C (100°F) - Contact your local Bestway Aftersales Service Center for instructions
Massage System does not work	<ul style="list-style-type: none"> - Air Pump is overheating - The massage system stops automatically - Air pump is broken 	<ul style="list-style-type: none"> - Unplug the pump and wait two hours until the pump has cooled. Insert the plug and press the massage system button - Press the massage system button to reactivate - Contact your local Bestway Aftersales Service Center for instructions
Pump adapters are not level with the spa adapters	<ul style="list-style-type: none"> - One characteristic of PVC is that it changes shape, which is normal 	<ul style="list-style-type: none"> - Elevate the pump with wood or another type of insulated material to bring the pump's adapters level with the spa's adapters
Spa pool leakage	<ul style="list-style-type: none"> - Spa is torn or punctured - Air valve is loose 	<ul style="list-style-type: none"> - Use provided repair patch - Using soapy water, cover the air-valve to check if air is leaking, if so, use the provided wrench to fasten the air-valve following these steps: <ol style="list-style-type: none"> 1. Deflate the SPA. 2. With one hand, hold the backside of the air valve from the inner side of the spa wall and turn the wrench clockwise.
Water is not clean	<ul style="list-style-type: none"> - Insufficient filtering time - Dirty Filter Cartridge - Improper water maintenance - Sanitary system is not working - The titanium plate was coated - Not enough sanitizing time 	<ul style="list-style-type: none"> - Increase filtration time - Clean/replace the Filter Cartridge (refer to Filter Cartridge Cleaning and Replacement section) - Refer to the chemical manufacturer's instructions - Check the power supply or contact your local Bestway Aftersales Service Center for instructions - Clean the titanium plate (refer to Salt Chlorinator System Maintenance section)
GFCI test failed	There is a defect in your spa	Contact your local Bestway Aftersales Service Center and return the SPA.
HydroJet System does not work	<ul style="list-style-type: none"> - Water pump is overheating - Water pump is broken 	<ul style="list-style-type: none"> - Unplug the pump and wait for two hours until the pump has cooled. Plug in and try again - Contact your local Bestway Aftersales Service Center for instructions
Control panel not working	The control panel has an auto-lock, which is activated after 5 minutes of inactivity. The LED display has one icon:  If the lock icon is highlighted, the control panel is locked	To unlock the control panel, press the  button for 3 seconds. If the control panel will not unlock, restart the pump – unplug and plug in the pump. If the problem persists, please contact your local Bestway Aftersales Service Center for instructions.
What kind of chemicals should be used for water maintenance?	Please consult your local chemical supplier for information about chemical maintenance. Pay close attention to the chemical manufacturer's instructions.	
Water leaks from the adapters between the pump and spa	Insert the three stopper caps on to the spa's ports to prevent water from escaping and disconnect the pump. Check and make sure the seals are placed correctly inside the pump adapters. If the seals are missing or not installed correctly, please contact your local Bestway Aftersales Service Center for instructions. If the seals are correctly in place, reconnect the pump to the spa and hand-tighten the adapters.	

Limited BESTWAY® Manufacturer's Warranty

The product you have purchased comes with a limited warranty. Bestway® stands behind our quality guarantee and assures, through a replacement warranty, your product will be free from manufacturer's defects. The limited warranty is valid as follows:

360 days for the heater pump from the original date of purchase

180 days for the pool liner from the original data of purchase

30 days for hoses, fitting and accessory included in the package from the original date of purchase

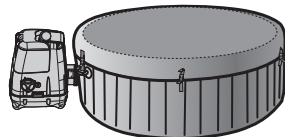
To enact a warranty claim, this form must be completed and supplied with a copy of your receipt/purchase to your local Bestway After Sales Center. Please contact your local Bestway After Sales Center before sending any documents. They will provide full instructions of what is needed for your claim. Bestway® is not responsible for economic loss due to water or chemical costs and will not replace any products deemed to have been damaged due to negligence or having been used outside of the owner's manual guidelines.

Bestway's warranty covers manufacturing defects discovered while unpacking the product or during use as recommended within the user manual, this warranty applies only to products which have not been modified by any 3rd parties. The product must be stored and handled in accordance with the technical recommendations.

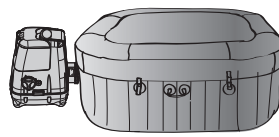
The warranty does not cover damages caused by misuse, abuse, neglect, including, but not limited to collision, fire, use of incorrect voltage, excessive heat exposure, improper installation, improper wiring or testing, improper storage.

Replacements and repairs don't extend the duration of the warranty. The warranty start date is the date of sale shown on the original receipt/purchase invoice.

Please choose your Spa



☐ Palm Springs



☐ Hawaii

TO: Bestway® Service Department

Date of purchase: _____

Date: _____

Customer Code Number: _____

FAX/E-MAIL/TEL: Please refer to your country according to the information found on the back cover or on our website:

www.bestwaycorp.com

Please provide your address details in full. **Note:** Incomplete address details will result in delayed shipments.

Bestway reserves the right to charge for redelivery of undelivered packages where the recipient is at fault.

REQUIRED INFORMATION - PLEASE WRITE THE SHIPPING ADDRESS

Name: _____ Address: _____

Zip Code: _____ Retailer: _____

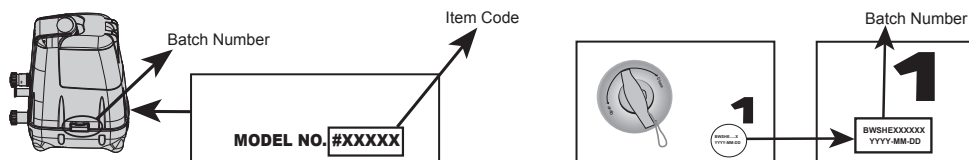
Country: _____ City: _____

Mobile: _____ Telephone: _____

Fax: _____ E-mail: _____

Spa Pump Batch Number: _____ Spa Pool Batch Number: _____

Spa Pump Item Code: _____



All drawings for illustration purpose only. Not to scale.

Problem description

- ☐ Spa leakage ☐ Water Filtration System not working ☐ Heating System not working
- ☐ Control panel shows a failure which cannot be solved ☐ Massage System not working
- ☐ Pump leakage ☐ Adapter leakage ☐ Missing part - Please use the code for the missing part. This can be found in the owner's manual.
- ☐ Other (Please describe) _____

IMPORTANT: ONLY THE DAMAGED PART WILL BE REPLACED, NOT THE COMPLETE SET.

Bestway reserves the right to request photographic evidence of defective parts, or to require sending the item for additional testing. In order to best assist you, we request all information you provide to be complete.

FOR FAQ, MANUALS, VIDEOS OR SPARE PARTS, PLEASE VISIT OUR WEBSITE: www.bestwaycorp.com.

VIDEOS ARE ALSO AVAILABLE ON OUR BESTWAY CHANNEL ON YOU TUBE: www.youtube.com/user/BestwayService

Bestway

