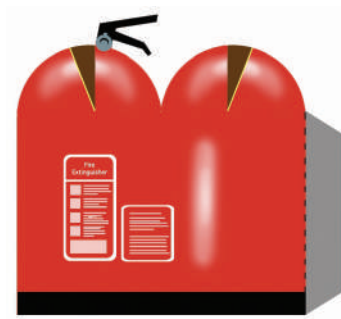


Make your own Shoebox Gallery

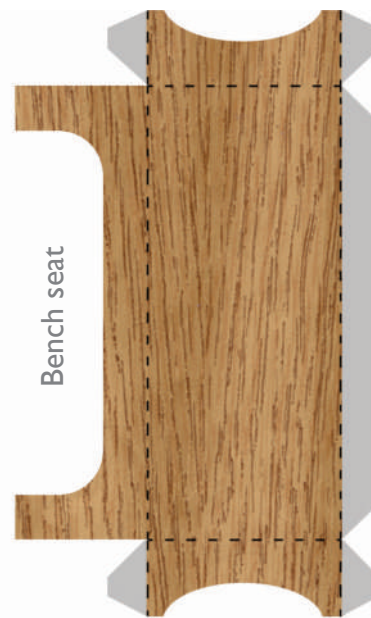


Cut these people out to make guards or information officers for your gallery. You could make your own people too.



Fire extinguisher

1. Cut out the fire extinguisher and cut along yellow lines.
2. Form tube by wrapping main body around a pen, then glue grey tab under opposite side.
3. The curved top is formed by glueing each brown tab under yellow line so a half a cone is made on each side.



Bench seat

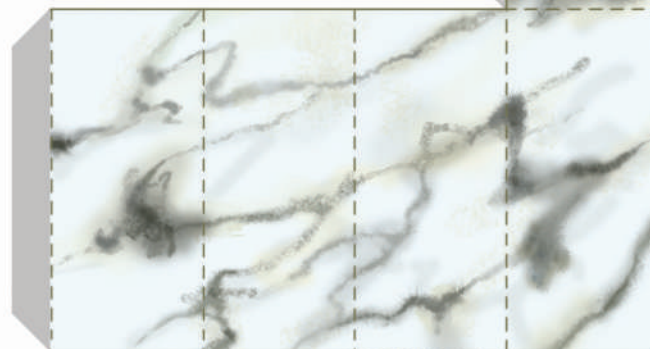


Bench back



It should look like this

Marble plinth



glue tabs →

You can use this plinth to display sculptures like the one below.



Sculpture



shape A

How to make this model of Eduardo Paolozzi's *Contemplative Object*:

1. Cut out the sculpture and shape A.
2. Roll shape A around a pencil or pen, and glue or tape in place so it forms a tube.
3. Fold the sculpture in half along the red line and fix together at the opposite end with a spot of glue.
4. Insert the tube between the two sides of the sculpture to push it out into an oval shape.



- How to make the plinth:
1. Cut out the plinth shape.
 2. Fold along the dotted lines.
 3. Fold the flat shape into a cube by folding all the dotted lines inwards.
 4. Glue in place using the grey tabs.

You can hang these pictures in your gallery. Find out what colours to make them by going on the gallery trail over the page.



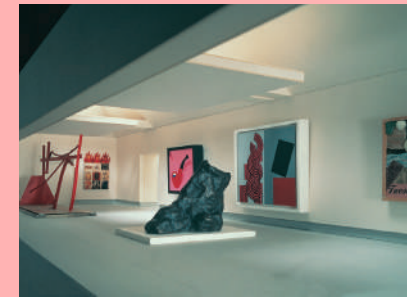
Cut out these signs and put them in your gallery to help visitors find their way around.



This page shows you how to construct your shoebox gallery and make some of the things needed in a gallery (such as a **plinth** for putting sculptures on and frames for pictures), using the cut-outs on the opposite page. The other side of the sheet has ideas about how you can fill your gallery.



The Thirty Four Gallery



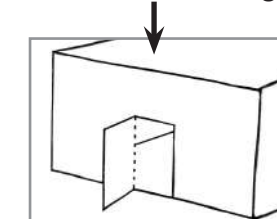
Pallant House Gallery Model 2000

Have you seen Pallant House Gallery's two model art galleries? One was made in 1934 by Sydney Burney, an **art patron** and **collector** who lived in London. The other was made in 2000 and is based on the plans of two galleries in the new wing of Pallant House Gallery. Both model galleries contain miniature works of art created by some of the most celebrated UK artists of the twentieth century.

To make the shoebox gallery you will need:

- a shoebox
 - extra bits of cardboard (e.g. old food/cereal packs)
 - scissors
 - glue
 - pencil and ruler
- Other things that might be useful:
- clear plastic or acetate for windows
 - coloured paper or paint, if you want to decorate the walls of your gallery.

First of all you will need to put a door in your shoebox, so that visitors can enter the gallery. Cut 3 sides of the door out and bend the fourth side to form a hinge.

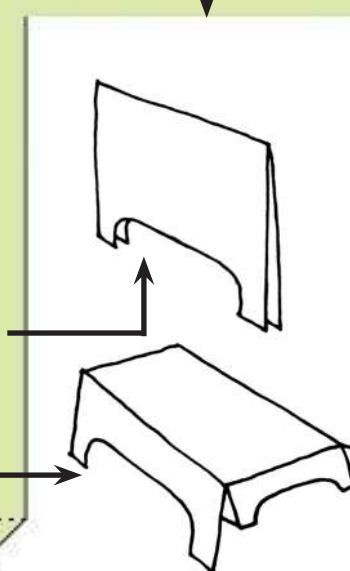


You can make windows by cutting holes in the sides of the shoebox and covering with acetate or clear plastic. Think about what shape you want the windows.

You may want to make partition walls for your gallery. Each shoebox is a slightly different size, so you'll need to measure yours to find out how big the wall needs to be. You can draw round this shape as a guide. Put tabs at the side and bottom to fix the wall in place. You'll need a doorway too, so that visitor can move from one room to the next.

You can make a bench for your visitors to use.

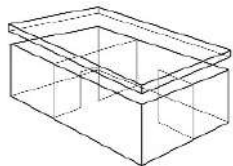
1. Cut out the bench back and bench seat on the opposite page.
2. Fold the bench back in half along the dotted line and glue the two sides together, so the wood grain is on the outside.
3. Fold the bench seat along the dotted lines, and glue the tabs in place, like this.



4. Glue the grey tab (on the seat) to the bench back, so that the top of the seat is lined up with the red line on the bench back.
- Your seat is complete, and should look something like this.



Fold along the dotted line to make tab



What do you need in an art gallery? Well its very important to have art! Art can be all sort of things, including paintings, photographs, drawings, prints, sculptures, **installations** and even **videos**. Some artists make work using things they've found, for example Andy Goldsworthy uses natural objects like stones and leaves.



You can really have fun making the art for your gallery

You can make your own miniature paintings, or versions of your favourite works of art

You could copy some from Pallant House Gallery

Why not invite your friends & family members to make work for your gallery

then have a big (but miniature) group show!

Ways to make art for your shoebox gallery

1. Use plasticine, air-drying clay or blu-tac to make miniature sculptures.
2. Make 3-d works of art using papier maché, or how about using fabric to make soft sculptures?
3. Use felt-tip pens, pencils or paint to create minature pictures.
4. Cut pictures out of magazines - you could have an exhibition of photographs. Or, if you have access to a digital camera you could take your own photographs and print them out very small.
5. Use natural objects, like Andy Goldsworthy, to create works of art.
6. Collect scraps of paper (photos, tickets, wrappers, bits from newspapers and magazines) and make collages, like some of the pop artists in the 1960s.
7. Let your imagination run wild! (Remember, in the art world unusual ideas are always welcome.)



Glyn Philpot, Portrait of Henry Thomas



Patrick Caulfield, Portrait of Juan Gris



Nigel Henderson, Head of James Joyce

New Words

Art patron - someone who likes art, helps artists and buys their work.

Collector - Someone who buys art. A collector is often interested in a particular artist or style of art.

Plinth - a box for displaying sculptures on.

Installation - an artwork made for a particular place.

Installations are sometimes made from quite unusual materials, and include videos and sound as well as sculptures or paintings.

Video - some artists make films instead of pictures or sculptures. They are shown in galleries, rather than on TV or at the cinema.

Media - the materials or processes used to make an artwork.

A theme for your exhibition

Why not choose a theme for your exhibition, such as 'landscapes', 'animals', 'dreams' or 'food'.

All the pictures on the right are 'portraits' even though they look quite different and have been made using different **media**.

Published by Pallant House Gallery,
with support from
the Arts Council England.
Designed by Louise Bristow

