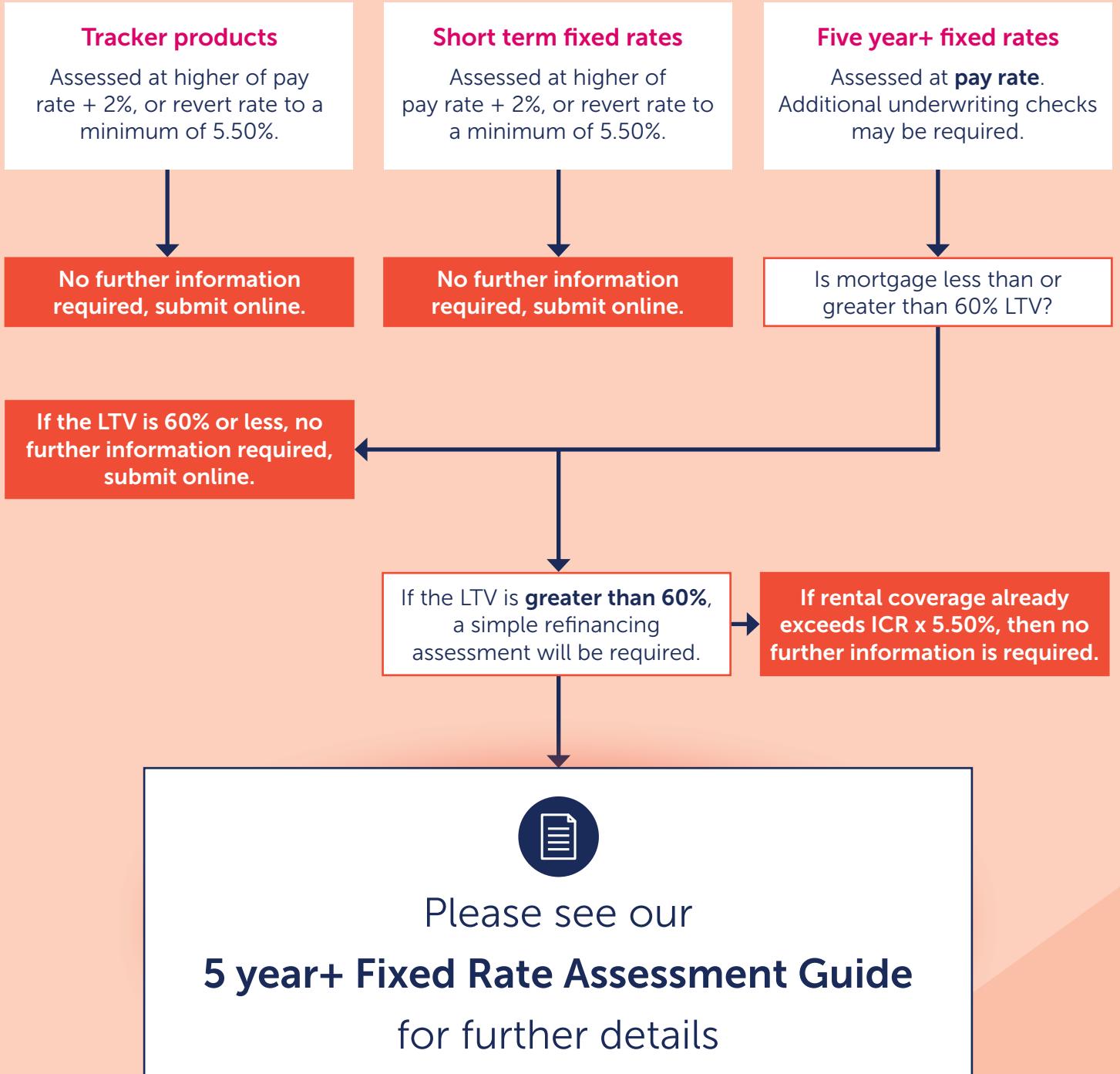


Buy to Let Assessment rate guide



Call us	0800 116 4385
Visit us	precisemortgages.co.uk
Follow us	  



The specialist lender you can bank on

FOR INTERMEDIARY
USE ONLY.

Precise Mortgages is a trading name of Charter Court Financial Services Limited which is authorised by the Prudential Regulation Authority and regulated by the Financial Conduct Authority and the Prudential Regulation Authority (Financial Services Register Firm Reference Number 494549). Registered in England and Wales (company number 06749498). Registered office: 2 Charter Court, Broadlands, Wolverhampton WV10 6TD.

01736 (2)