

How to read your meter

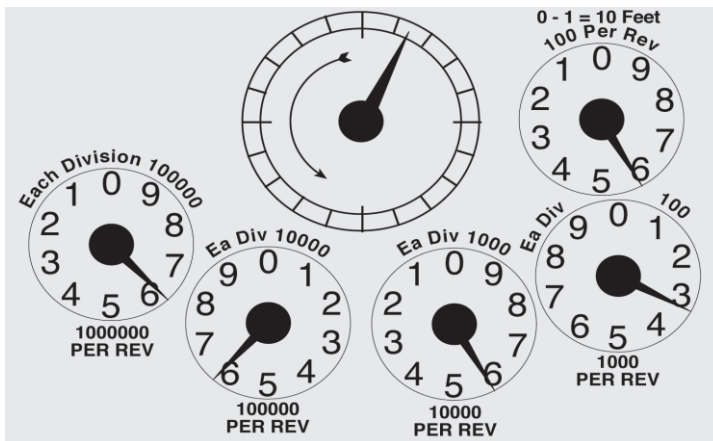
Gas

Your gas meter records the volume of gas you use as it passes from the mains into your home.

Dial meter

If your meter has dials, read the numbers on the bottom four dials, from left to right. If the needle is between two numbers, use the lower one. If it is between 9 and 0, use 9.

The meter reading in this example is 6653 (hundreds of cubic feet).



Digital meter

To read a digital meter, use only the white numbers. Ignore any numbers in red. Ignore any numbers after a decimal point.

The meter reading in this example is 6653 and is from an Imperial meter (identified on your meter with ft³) – note that there are four numbers for this reading



Metric meters (identified on your meter with m³) will have a reading of five numbers.

Digital display meter

Some meters have a digital display and you may need to press a button to display the reading(s). There may be more information displayed than just the reading (eg. time or date) – in these instances, write down all the information and we can do the rest for you.



Electricity

Your electricity meter measures the number of kilowatt hours (kWh) you have used.

Dial meter

If your meter has dials, read the numbers on the black dials from left to right, ignore red dials. If a needle is pointing between 2 numbers, use the lower one. If it is between 9 and 0, use 9.

The meter reading in this example is 94694 kWh.



Digital meter

Single Rate:

If your meter looks like this simply read the numbers shown.



Ignore red boxes / numbers and any numbers after a decimal point. The meter reading in this example is 46043 kWh.

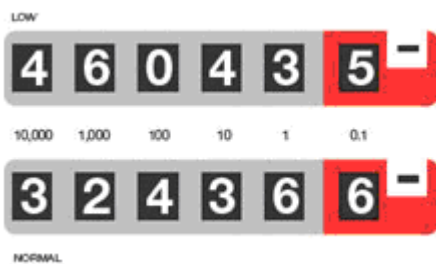
Economy 7:

Economy 7 meters have two sets of dials or registers, these may be labeled as:

RATE 2/ NIGHT/ LOW is for the lower priced night-rate electricity

RATE 1/ DAY/ NORMAL is for the day rate electricity

You should note both readings and which register they are for.



Digital display meters

Some meters have a digital display and you may need to press a button to display the reading(s). There may be more information displayed than just the reading(s) (eg. time or date) – in these instances, write down all the information and we can do the rest for you.

