

# CALIBRATION OF RADIOCARBON AGE TO CALENDAR YEARS

(Variables: C13/C12 = -24.7 ‰ : lab. mult = 1)

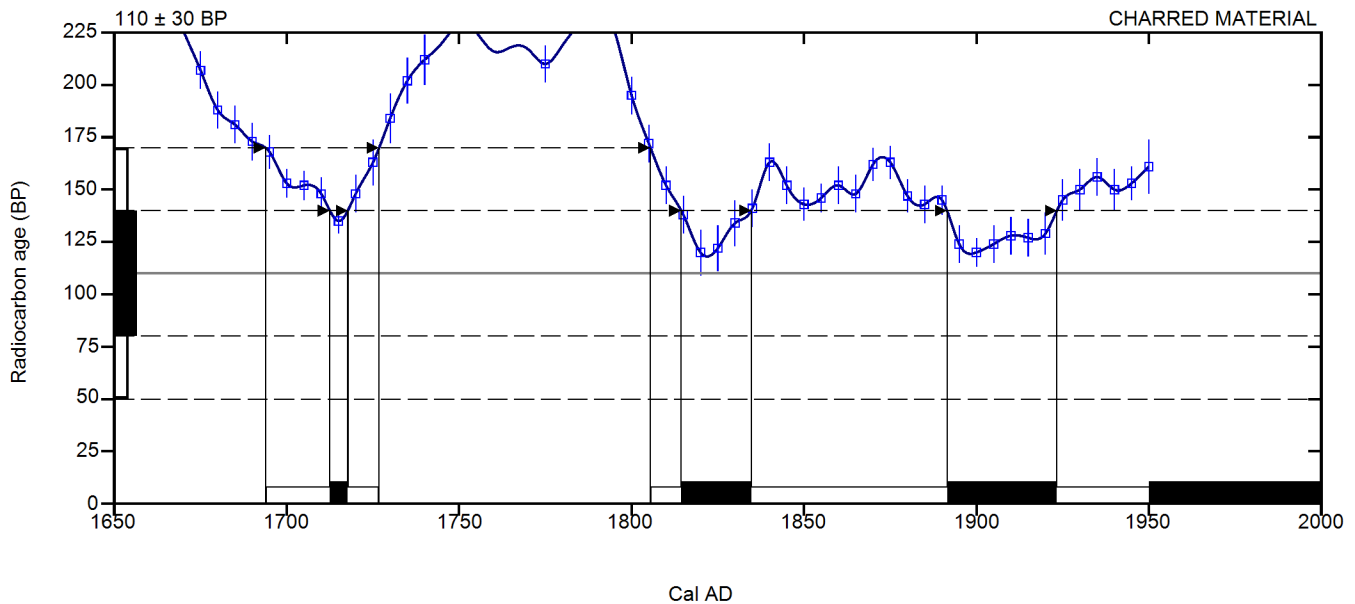
Laboratory number      **Beta-441224 : MUTANDA2C3**

Conventional radiocarbon age      **110 ± 30 BP**

Calibrated Result (95% Probability)      **Cal AD 1695 to 1725 (Cal BP 255 to 225)  
Cal AD 1805 to Post 1950 (Cal BP 145 to Post 0)**

Intercept of radiocarbon age with calibration curve      Post AD 1950 (Post BP 0)  
curve

Calibrated Result (68% Probability)      Cal AD 1710 to 1720 (Cal BP 240 to 230)  
Cal AD 1815 to 1835 (Cal BP 135 to 115)  
Cal AD 1890 to 1925 (Cal BP 60 to 25)  
Post AD 1950 (Post BP 0)



Database used  
SHCAL13

## References

### Mathematics used for calibration scenario

A Simplified Approach to Calibrating C14 Dates, Talma, A. S., Vogel, J. C., 1993, Radiocarbon 35(2):317-322

### References to SHCAL13 database

Hogg AG, Hua Q, Blackwell PG, Niu M, Buck CE, Guilderson TP, Heaton TJ, Palmer JG, Reimer PJ, Reimer RW, Turney CSM, Zimmerman SRH. 2013. SHCal13 Southern Hemisphere calibration, 0–50,000 years cal BP. Radiocarbon 55(4):1889–1903.

## Beta Analytic Radiocarbon Dating Laboratory

4985 S.W. 74th Court, Miami, Florida 33155 • Tel: (305)667-5167 • Fax: (305)663-0964 • Email: beta@radiocarbon.com