



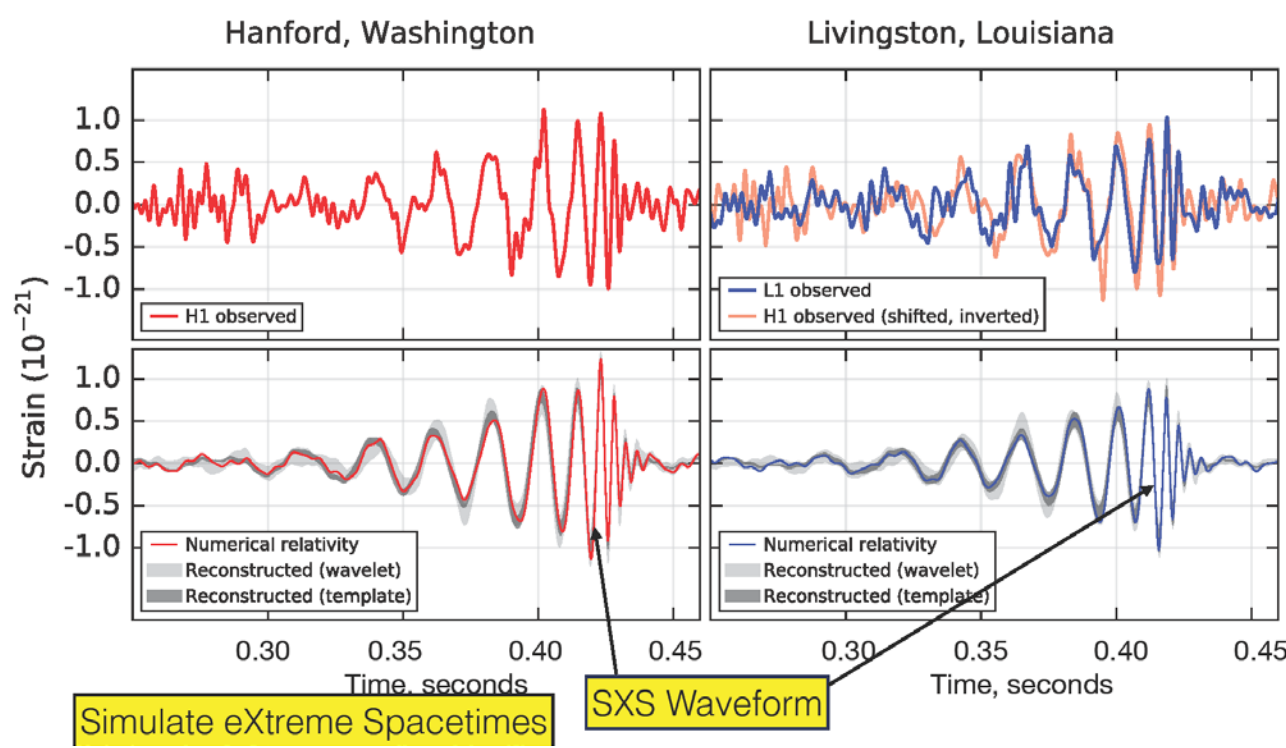
Award #: 1931280

CSSI Element: A task-based code for multiphysics problems in astrophysics at exascale

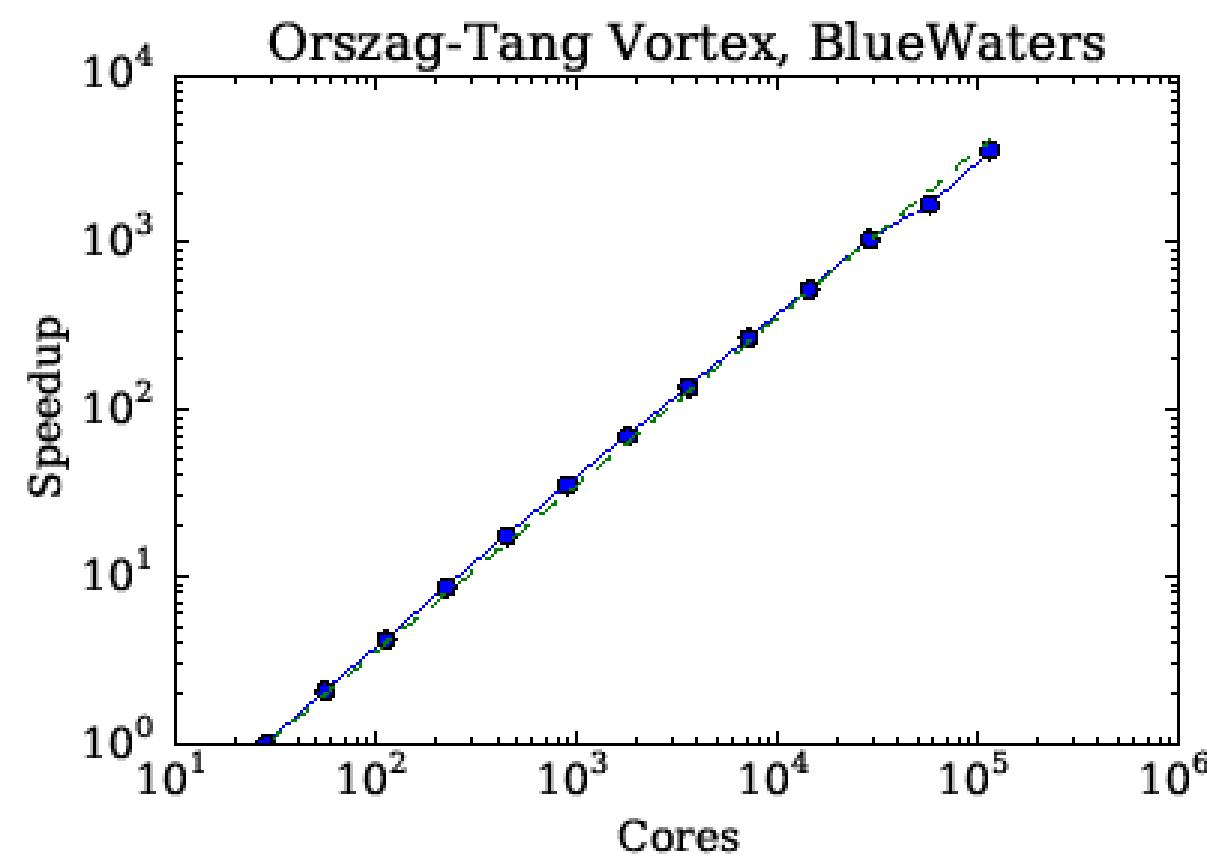
PI: Saul Teukolsky, Co-PIs: Larry Kidder, Mark Scheel
Institutions: Cornell, Caltech

Motivation

- Many astrophysical phenomena now require solving PDEs with quite high accuracy, e.g.
 - LIGO waveforms
 - Core-collapse supernovae
 - Tidal effects in NS-NS mergers
- Detector improvement will require $\sim 100 \times$ greater accuracy over next 10 years in some cases
- Existing codes do not scale to millions of cores

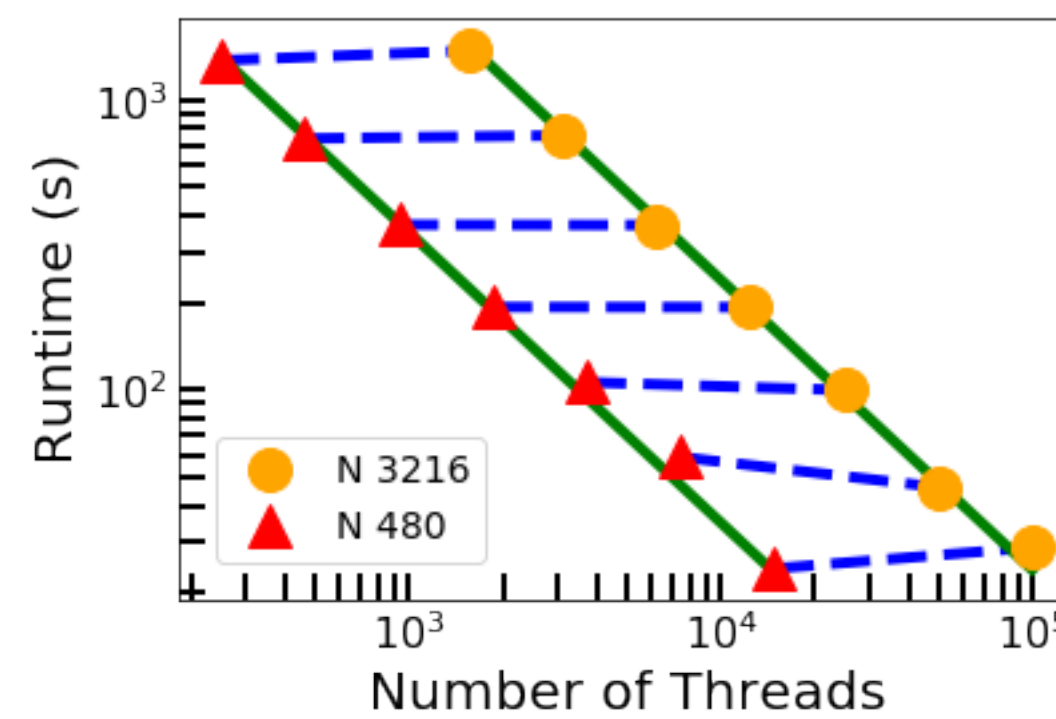


Some SpECTRE Test Cases



330 x 330 x 2 cells, 2³ points per cell
Laptop to supercomputer with no hand tuning!

Strong and Weak Scaling on Blue Waters for GR Bondi Accretion



A fixed-size problem with N blocks of 512 DG elements with 5 radial x 4² angular basis functions is evolved on an increasing number of threads. Perfect strong scaling: linear speedup if fixed size problem solved with more processors (green lines). Perfect weak scaling: same run time when larger problem solved with proportionally larger number of processors (horizontal dashed lines).

Local Time Stepping

- AMR leads to a large range of Courant conditions
- Advance each element with its own timestep (bad scaling unless task-based parallelism!)
- We have developed a new algorithm that is high-order and conservative

How to Fool a Computer Allocation Committee:

Advance all elements in lockstep! Perfect scaling, but only 10% of machine is doing useful work.



"It's becoming more and more human -- using only 10% of its brainpower."

Challenges

- Multiple spatial scales in 3-d
- Multiple time scales
- Geometry changes (disruption, merger, black hole formation ...)
- Multiphysics (GR, hydro, MHD, neutrinos, EM radiation, nuclear reactions, ...)
- Surfaces, shocks: solution is **not smooth**

Key Innovations of the SpECTRE Code

- Discontinuous Galerkin (DG) for discretization
- Task-based parallelism

Advantages of DG

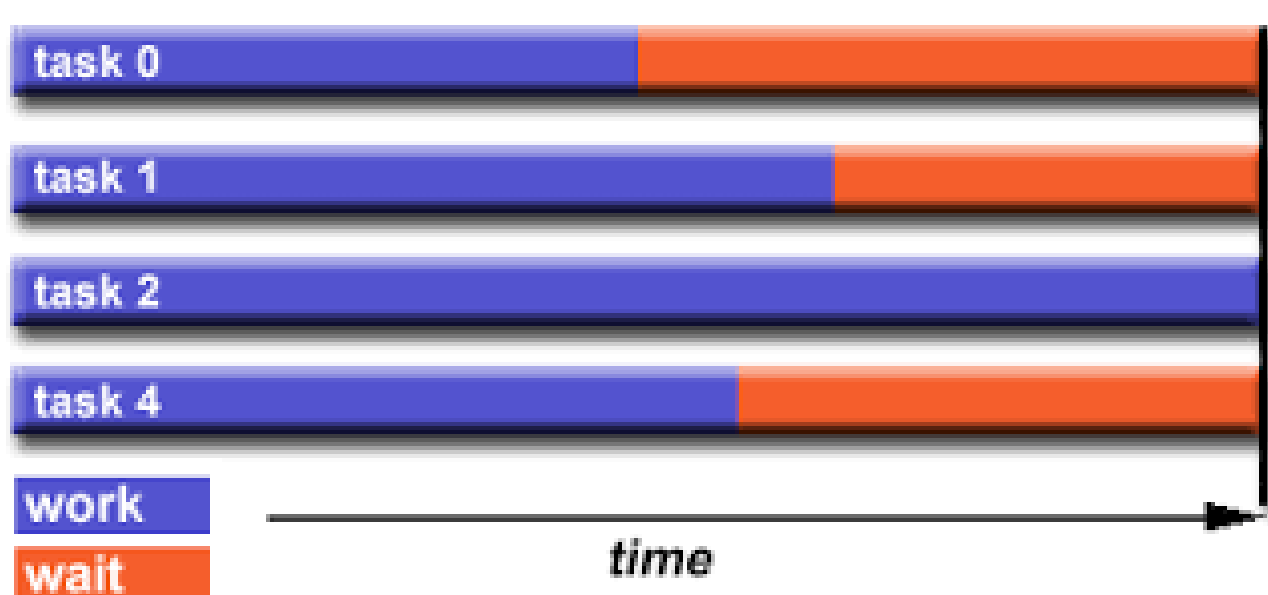
- High order (exponential convergence) in smooth regions
- Can handle shocks
- Only nearest-neighbor communication: good scalability
- Local time stepping "easy"
- AMR (hp-refinement) "easy"
- Multiphysics: all equations on same grid



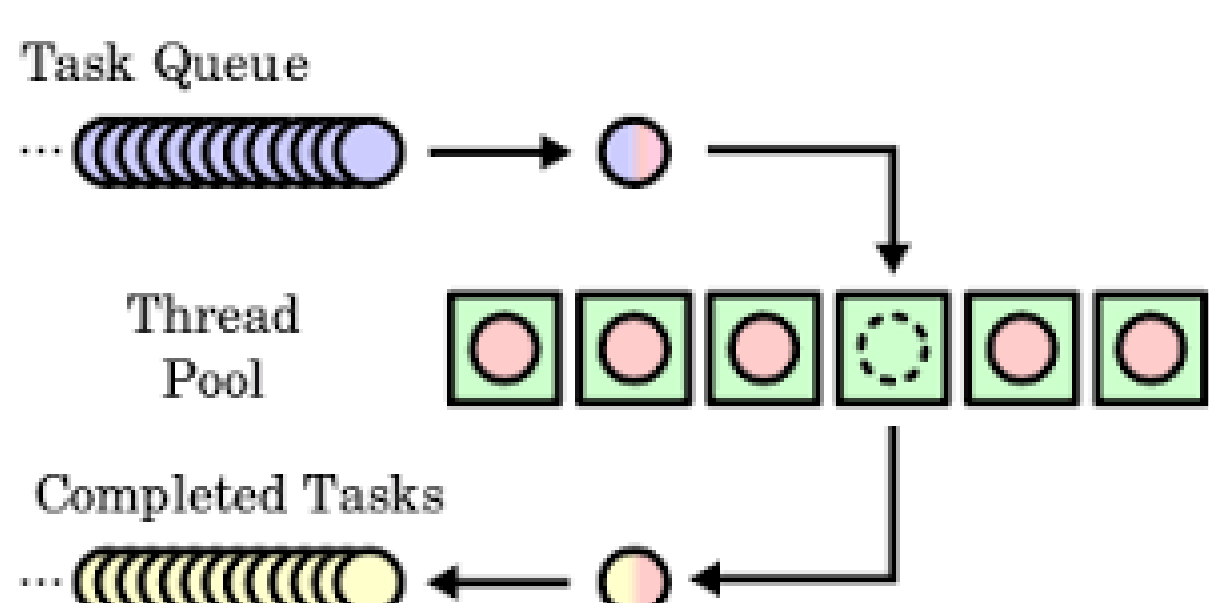
Implementing Task-based Parallelism

- No standard packages
- Charm++ (Parallel Programming Lab, UIUC)
 - Intra-node threading
 - Asynchronous method calls
 - Remote method calls
 - Dynamical load balancing

Conventional Parallelization

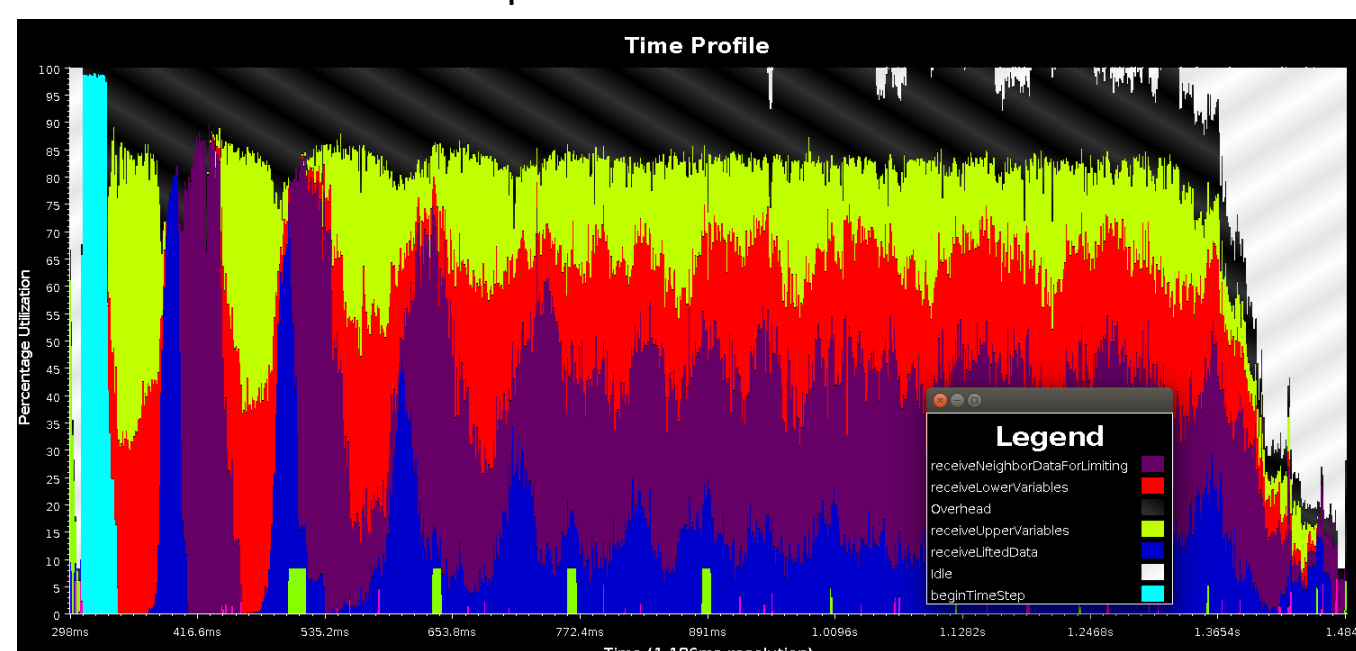


Task-based Parallelization:



Example Time Profile

10 steps of relativistic MHD test

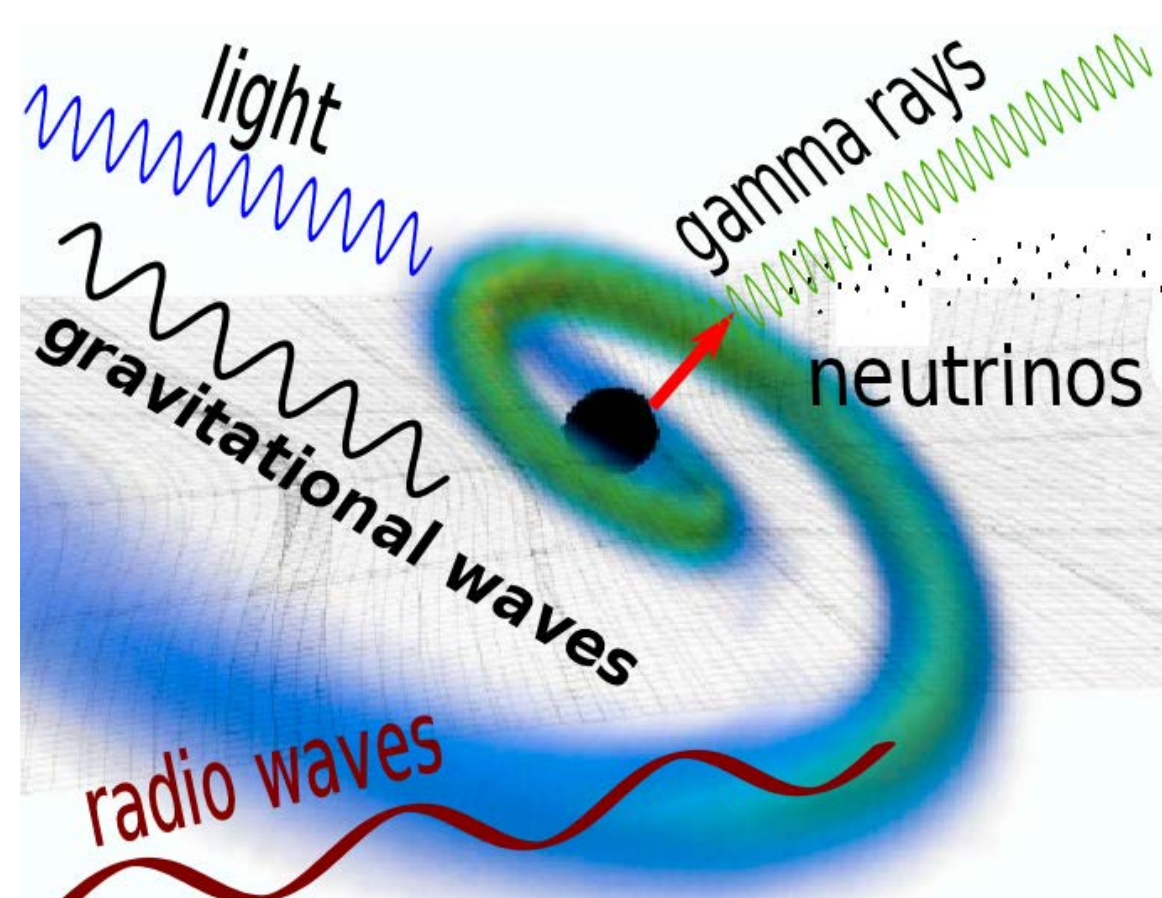


Red/Yellow: Data to interfaces (hides rhs volume computation)
Blue: Fluxes to elements
Cyan: Setup
Purple: Slope limiting
Black: Charm++
White: Idle

Software Engineering

- SpECTRE is open source: <https://github.com/sxs-collaboration/spectre>
- C++14 with Brigand for template metaprogramming (e.g. tensors)
- CMake, TravisCI
- Code review before merging includes documentation and tests

Multimessenger Astronomy



Cross-disciplinary Applications

- Any field that requires large-scale time evolution of PDEs:
 - Fluid dynamics, plasma physics, geoscience, ...

Summary

- After 60 years of finite differencing, it's time to move on if we want to tackle complex problems
- Algorithms like DG are high-order, robust for shocks, and local (good scaling)
- Task-based parallelism will enable exascale computing



"It says it's sick of doing things like inventories and payrolls, and it wants to make some breakthroughs in astrophysics."