

m o o o i[®]



Paper Chandelier L Patchwork

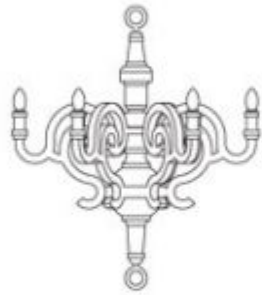
Paper Patchwork by Studio Job is a new member of Moooi's renowned Paper Collection family, which celebrates classic forms and a material with infinite potential: paper.

| | |
|-----------------------|----------------------------------------------------------------------------|
| Designer | Studio Job |
| Year of design | 2012 |
| Material | wood and cardboard, finished with paper, polyurethane (PU) and wood veneer |

m o o o i[®]

dimensions

paper chandelier L



101.5cm | 40"

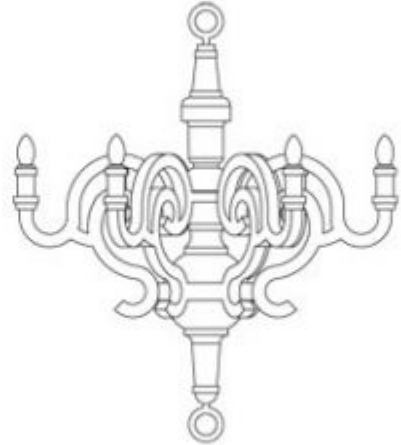
90 cm | 35.4"



101.5cm | 40"

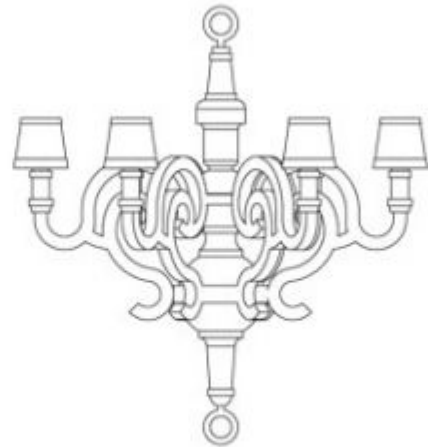
100cm | 39.4"

paper chandelier XL



155 cm | 61"

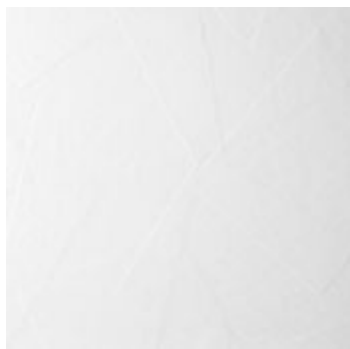
135 cm | 53.2"



155 cm | 61"

147 cm | 57.9"

detailing



The Paper collection illustrates its story with a lacquered paper finish.



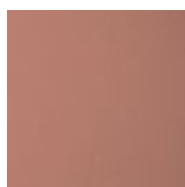
The wooden parts are finished with wood veneer.

colours

The RAL colours have been matched as closely as possible. The colour depends on your monitor and printer. Use official RAL Colour Publications for most accurate colour.



RAL 2002



RAL 3012



RAL 6021



RAL 2000



RAL 5024



RAL 7001



Lamp:
RAL 8001

technical



6 x E14 40W (incandescent type B)
or 12W (CFL type B)
220-240V 50Hz
Cable length 4M (black)



Paper canopy with CE version



6 x E12 40W (incandescent type B)
or 12W (CFL type B)
110-127V 60Hz
Cable length 4M (black)

Chrome canopy

packaging

chandelier L

H 115 cm | 45.3"

W 100 cm | 39.4"

D 90 cm | 35.4"

Colli 1/1

Product weight:
10,5 KG | 23,1 lb

With packaging:
19 KG | 41,9 lb

shades L

H 20 cm | 7.9"

W 36 cm | 14.2"

D 50 cm | 19.7"

Packaging weight:
2.5 KG | 5.5 lb