

# User Manual for Carvera Dust Collector Adapter

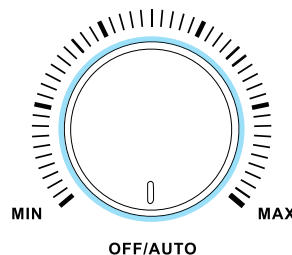
1. Carvera requires the firmware to be upgraded to v1.0.5 and the Controller to be upgraded to v0.9.13. The download links are as follows:



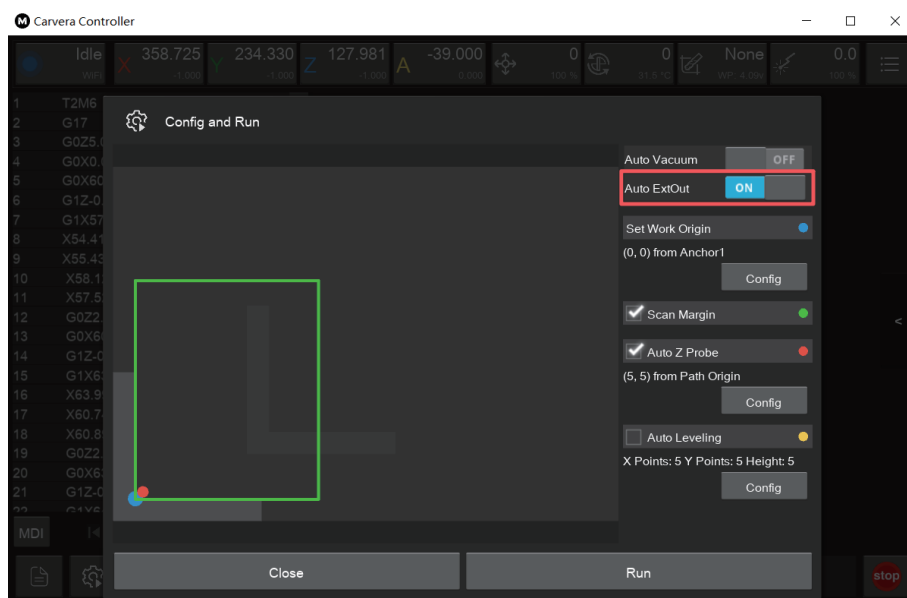
<https://www.makera.com/pages/software>



2. Connect Carvera to the dust collector using the included Carvera Dust Collector Adapter as shown in the diagram below. (Turn the Dust Collector knob to the OFF/AUTO position to enable Auto Control.)



3. Before starting the machining project, follow the instructions in the diagram below to enable the automatic control function. (Auto ExOut : ON)



## Note

1. "Auto Vacuum" is Carvera's built-in dust collection option. "Auto ExOut" is the option for controlling an external dust collector.
2. If using an external dust collector, please verify that the dust collection hose is correctly connected to the external port.