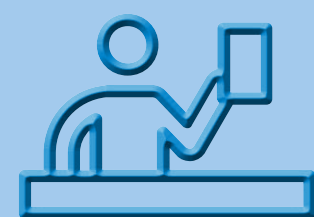


# POLICY FOR VISITORS WITH SPECIAL NEEDS

GUEST SERVICE OFFICE FOR VISITORS WITH SPECIAL NEEDS WHICH PROVIDES PERSONALISED AND ADAPTED INFORMATION TO ANYONE WHO NEEDS IT.

## OBJECTIVES OF THE GUEST SERVICE OFFICE FOR VISITORS WITH SPECIAL NEEDS



TO OFFER PERSONALISED ATTENTION TO VISITORS WITH SPECIAL NEEDS

TO PROVIDE INFORMATION ON THE MOST SUITABLE RIDES, RESTAURANTS, SHOWS AND GENERAL SERVICES AND FACILITIES FOR USE AND ENJOYMENT BY THIS GROUP OF VISITORS



PURCHASE OF TICKETS AT SPECIAL RATE when you show certification as proof of minimum disability of 33%. ID passes will be issued for access without architectural barriers for visitors with reduced mobility and certain neurodevelopmental disorders\*.

BOOKINGS IN TABLE SERVICE RESTAURANTS IN LOCATIONS FREE FROM ARCHITECTURAL BARRIERS



## 1 DISABLED VISITORS \*

MINIMUM  
33%  
DISABILITY



SPECIAL RATES FOR TICKET PURCHASES

REDUCED  
MOBILITY



ACCESSIBLE PARKING

P

(RESERVED AND CONTROLLED)

Disabled parking permit must be displayed.



ACCESSIBILITY GUIDE

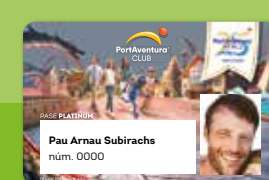


SPECIAL ACCESS TO RIDES WITHOUT ARCHITECTURAL BARRIERS



BOOKINGS IN TABLE SERVICE RESTAURANTS IN LOCATIONS FREE FROM ARCHITECTURAL BARRIERS

MINIMUM  
75%  
DISABILITY



FREE SEASON PASS

(Subject to the opening calendar of the parks.)

## 2 PEOPLE WITH CERTAIN NEURODEVELOPMENTAL DISORDERS \*

SPECIAL ACCESS TO RIDES WITHOUT ARCHITECTURAL BARRIERS

## 3 VISITORS WITH FOOD INTOLERANCES



GLUTEN-FREE GUIDE



SPECIAL MENUS IN TABLE SERVICE RESTAURANTS

IF YOU HAVE ANY OTHER SPECIAL NEEDS, WE WILL CATER TO YOUR REQUIREMENTS AT THIS GUEST SERVICE OFFICE WITH PERSONALISED AND ADAPTED INFORMATION.

\*Proven with the relevant documentation.