

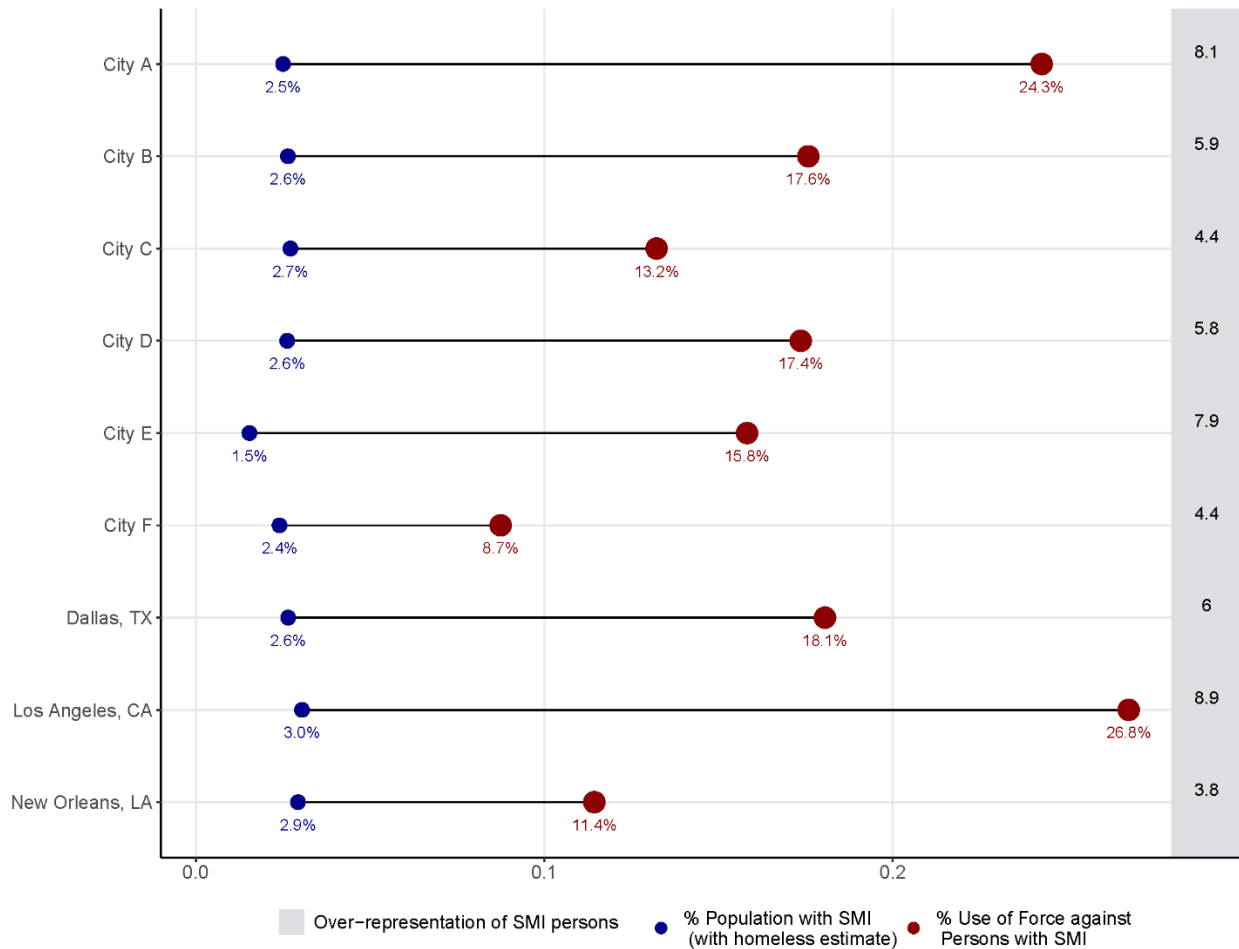
**Supplementary Appendix**  
*Descriptive statistics from NCS-R*

**Table S1:** Variable coding and frequency from NCS-R (N = 5,692)

<b>Variable</b>	<b>Frequency</b>
<i>Age</i>	
18-20 (reference)	347
21-24	451
25-34	1141
35-44	1258
45-54	1123
55-64	663
65+	655
<i>Gender</i>	
Male (reference)	2382
Female	3310
<i>Race</i>	
White (reference)	4180
Asian	83
Black	717
Hispanic	527
Other	185
<i>Marital Status</i>	
Never Married (reference)	1217
Divorced, Separated, or widowed	1239
Married	3236
<i>Education</i>	
Below high school (reference)	856
High school	1709
Some college	1707
Bachelors	806
Some post-Bachelors	614
<i>Employment Status</i>	
Not in Labor Force	1630
Employed	3766
Unemployed	283
<i>Poverty Index</i>	
0	362
1	815
2	861
3	763
4	725

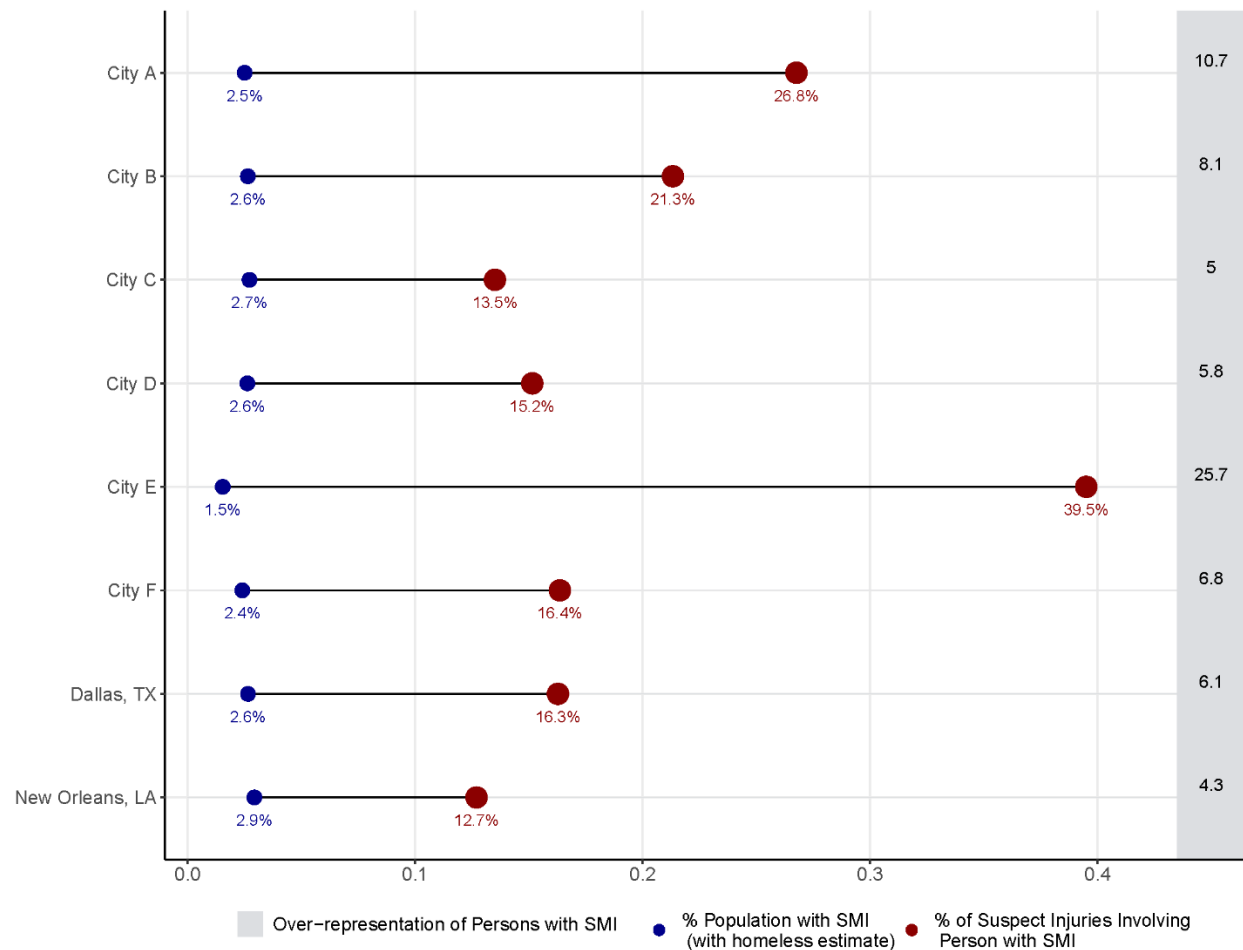
*Estimates of raw disparities accounting for city level homelessness rates*

**Figure S1:** City-level disparities in use of force among persons with serious mental illness accounting for city level estimates of the homeless population



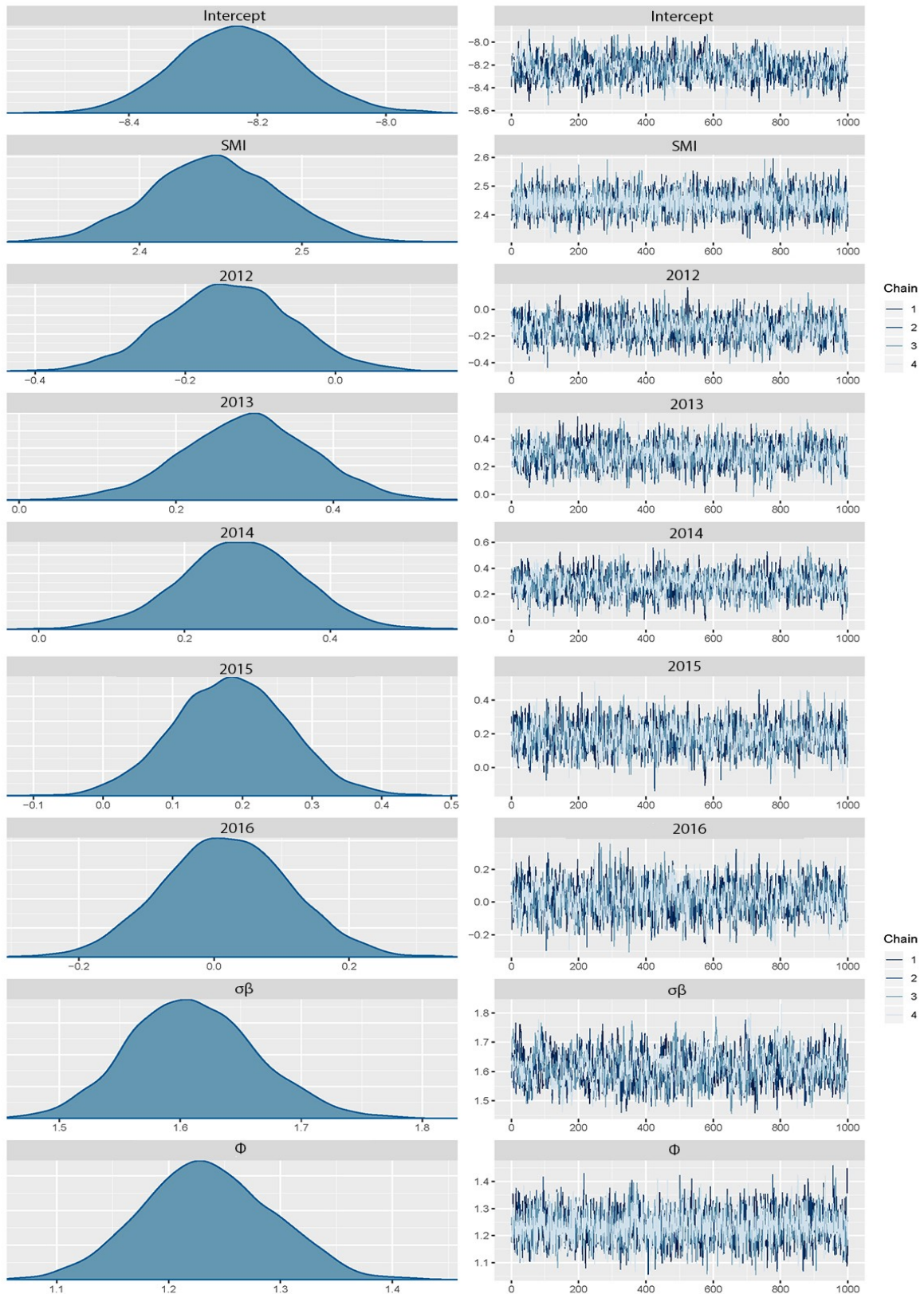
*Note:* We re-calculate raw city-level disparities in police use of force against PwSMI accounting for estimates of the homeless population in each city. Specifically, for each city in our data set, we pull corresponding point-in-time estimates of the homeless population for that year. Since point-in-time estimates of the local homeless population do not routinely measure the share of the homeless population with SMI, we conservatively estimate a large rate of SMI among the homeless at 42.3%<sup>1</sup>.

**Figure S2:** City-level disparities in injury among persons with serious mental illness accounting for city level estimates of the homeless population

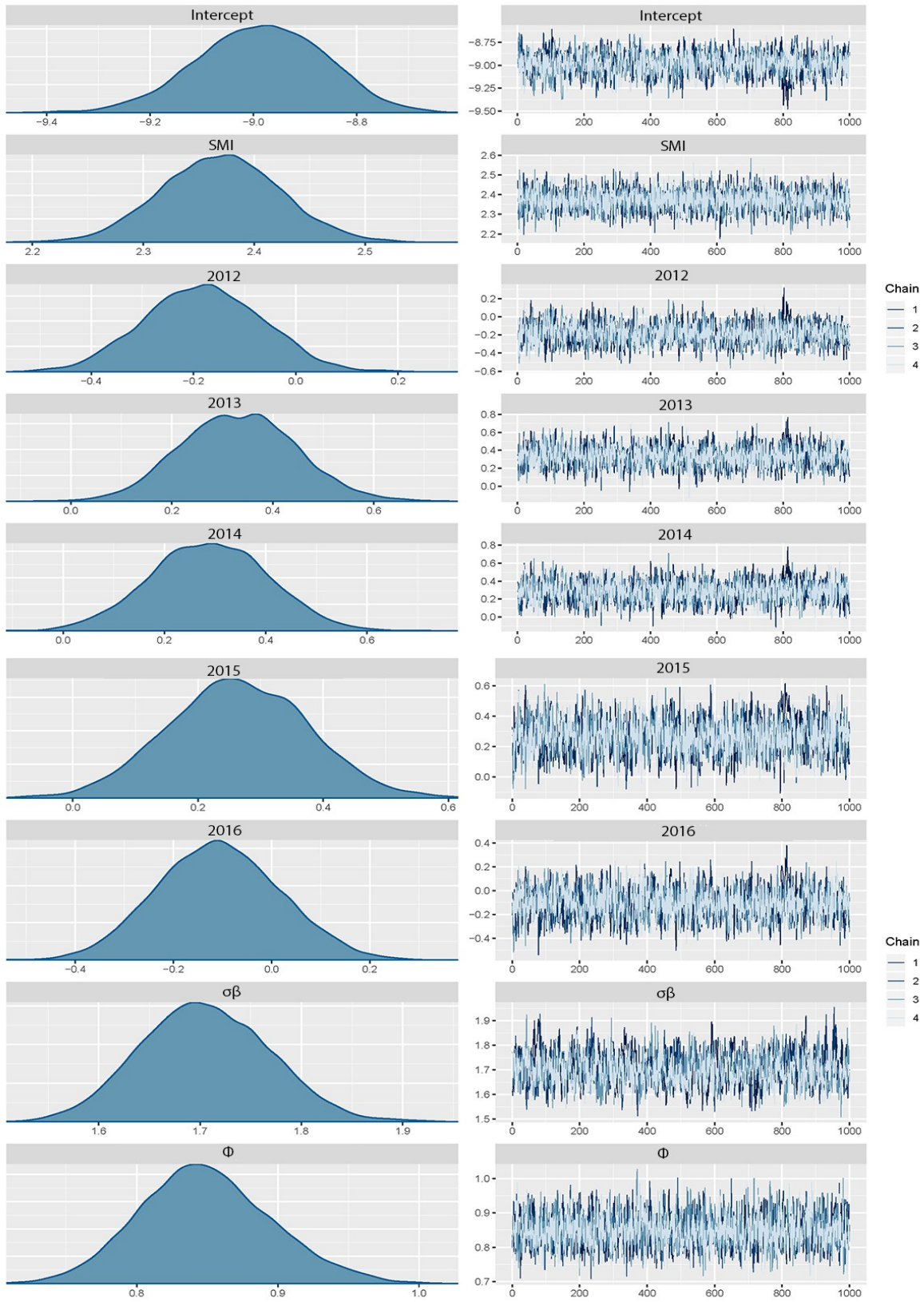


*Note:* We re-calculate raw city-level disparities in injury among PwSMI accounting for estimates of the homeless population in each city. Specifically, for each city in our data set, we pull corresponding point-in-time estimates of the homeless population for that year. Since point-in-time estimates of the local homeless population do not routinely measure the share of the homeless population with SMI, we conservatively estimate a large rate of SMI among the homeless at 42.3%.<sup>1</sup>

**Figure S3:** Posterior distribution for estimated coefficients and convergence plots for tract-level model – use of force

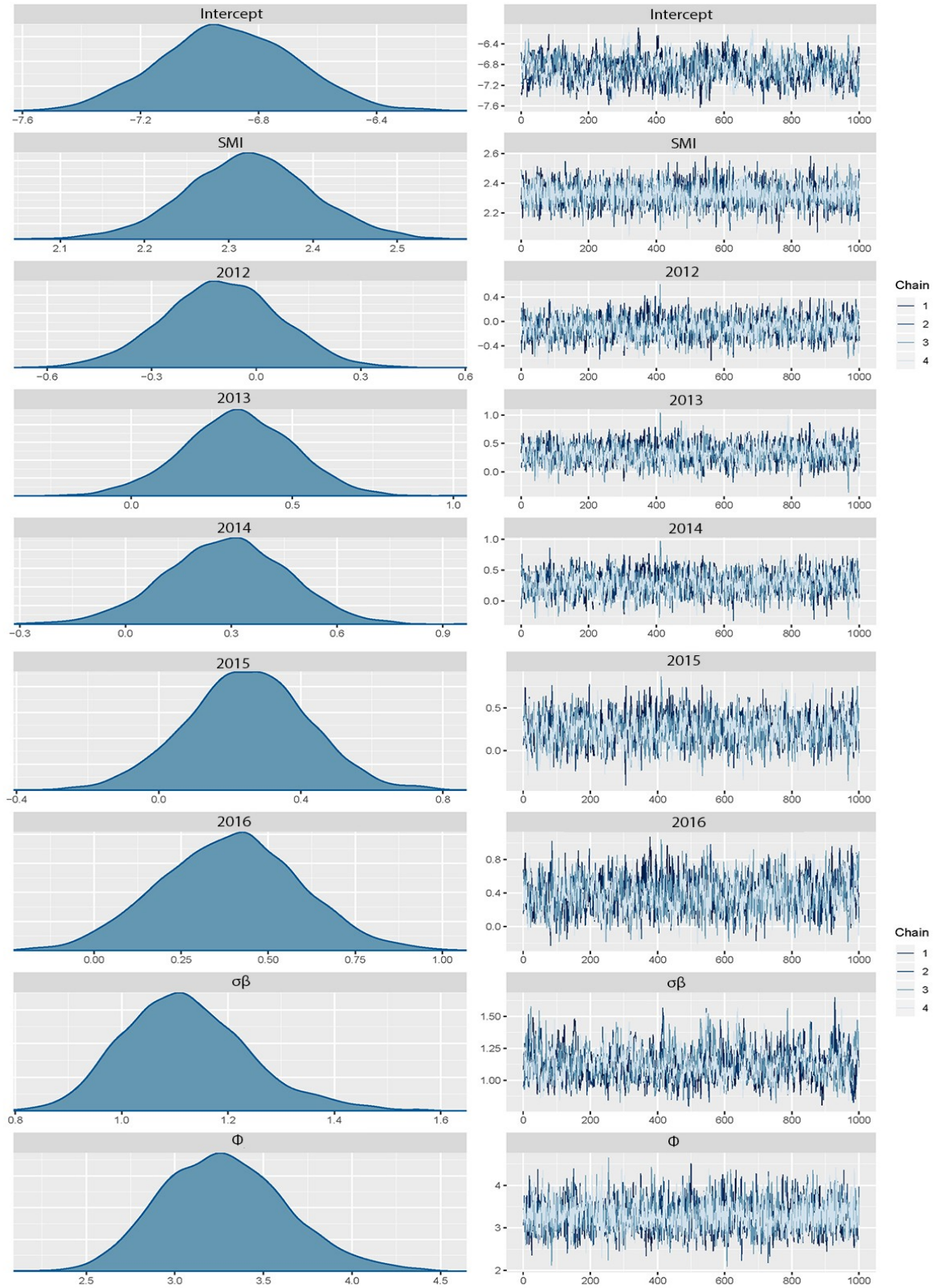


**Figure S4:** Posterior distribution for estimated coefficients and convergence plots for tract-level model – suspect injuries

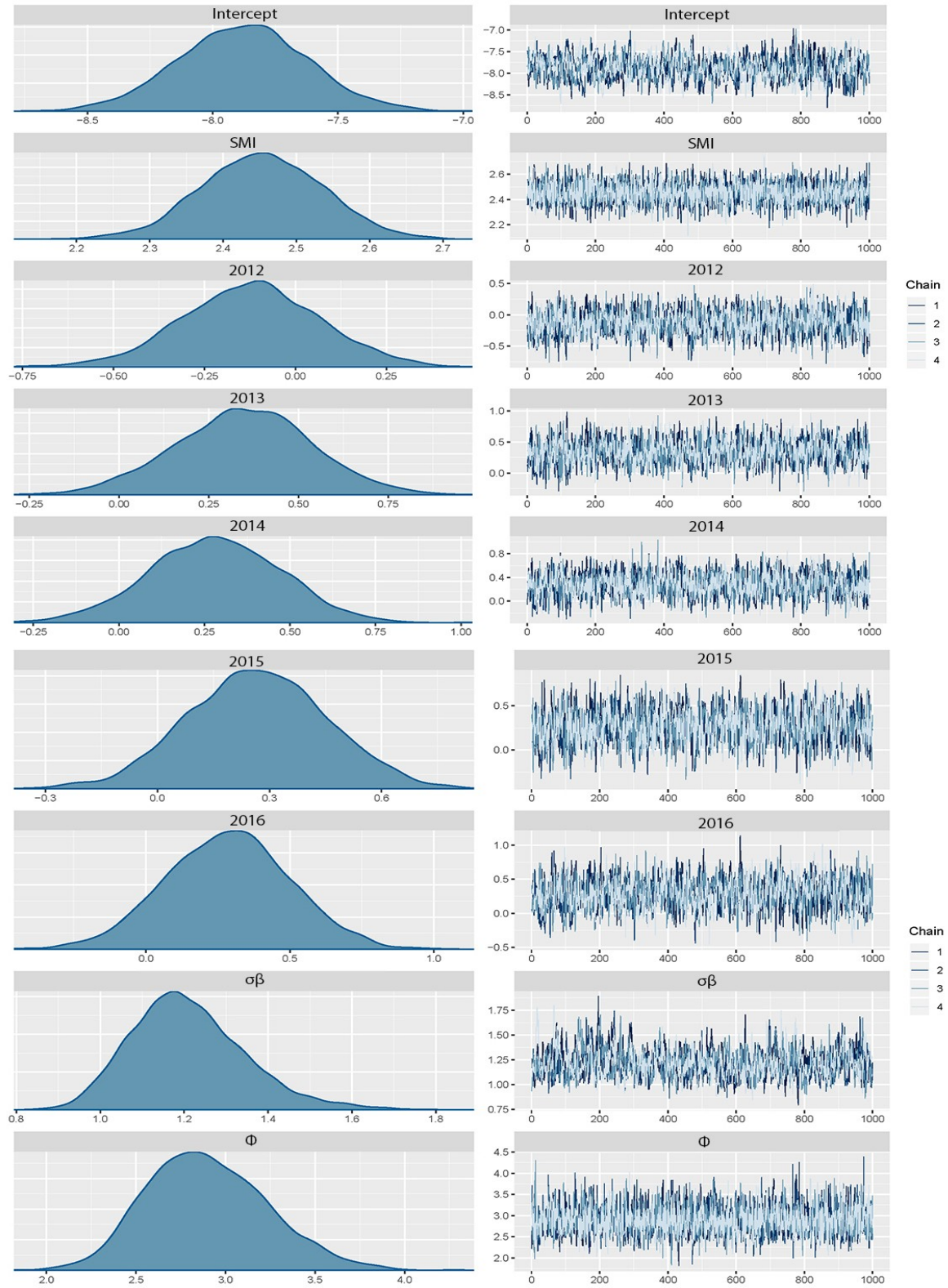




**Figure S5:** Posterior distribution for estimated coefficients and convergence plots for precinct-level model – use of force



**Figure S6:** Posterior distribution for estimated coefficients and convergence plots for precinct-level model – suspect injuries



## References

1. Fazel S, Khosla V, Doll H, Geddes J. The prevalence of mental disorders among the homeless in western countries: systematic review and meta-regression analysis. *PLoS medicine*. 2008;5(12):e225.