

C.A.T Manager® Online

Drive best practice, reduce utility strikes and improve on-site safety with our new cloud-based management system.

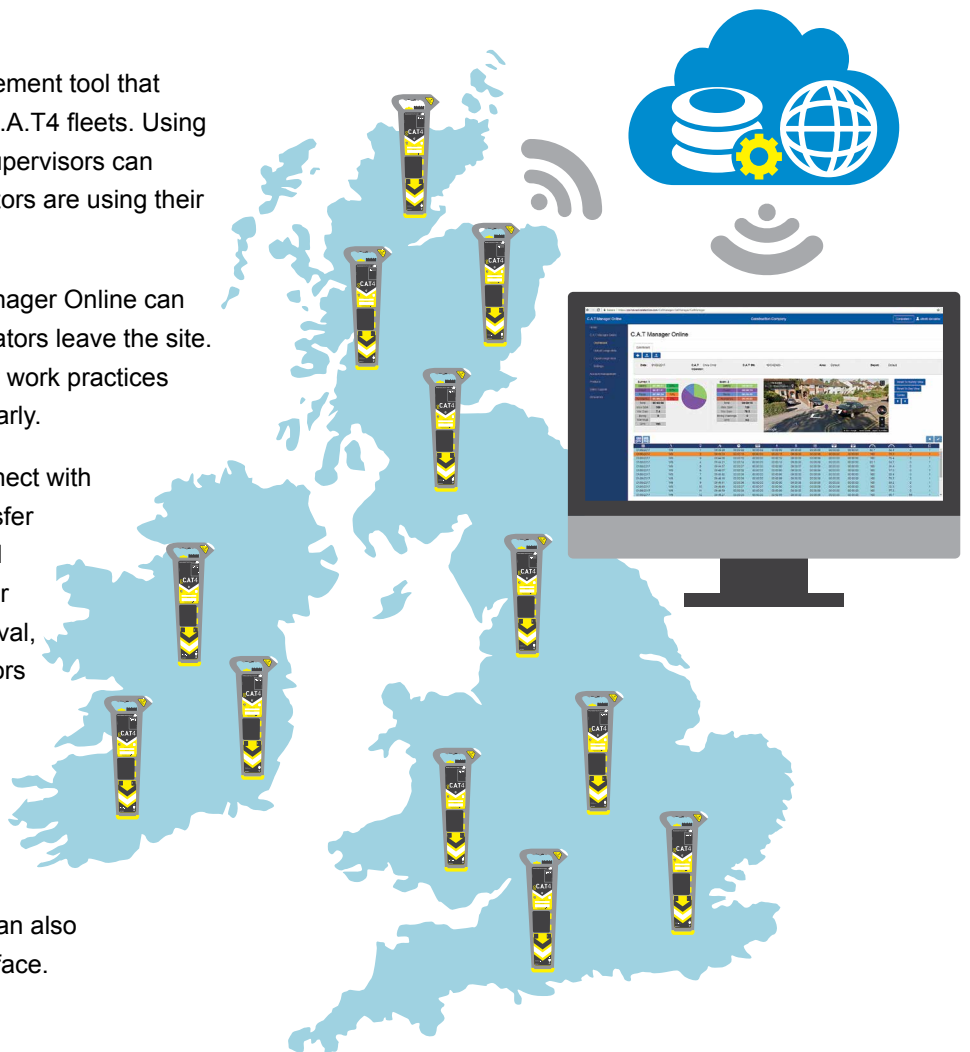


C.A.T Manager Online is a remote management tool that enables automatic usage-monitoring of gC.A.T.4 fleets. Using a standard web browser, managers and supervisors can review how their entire team of field operators are using their C.A.T locators.

Enabling near real-time reports, C.A.T Manager Online can be used to check work quality before operators leave the site. The data can also be used to prevent poor work practices developing, by identifying training needs early.

gC.A.T.4 GPS Cable Avoidance Tools connect with a free Android or Apple mobile app to transfer usage data to the remote server at the end of each scan. There is no need for operator intervention or complex manual data retrieval, saving time and effort for both field operators and office staff.

The web interface provides a structured analysis and presentation of the data, allowing supervisors to easily assess work quality. Built-in GPS adds location information to all the scans, and surveys can also be visualised using the Google Maps interface.



The C.A.T Manager Online system offers 2 subscription levels:

C.A.T Manager Online Features	Subscription Levels	
	Standard	Pro
Android and Apple* mobile app	✓	✓
C.A.T fleet management	✓	✓
Online Storage	3 months	Indefinite**
C.A.T operator feedback	✓	✓
Survey Analysis & Usage reporting	✓	✓
Backup option	✓	✓
E-Mail and tickets support	✓	✓
Phone Support	✗	✓
Team and account management	✗	✓
Advanced statistical analysis	✗	✓

*Apple device compatibility requires the use of a gC.A.T4 supporting Bluetooth 4 (all units produced after July 2016).

**Full usage data store for 18 months; summary thereafter.

Features

Android and Apple mobile app

C.A.T Manager Mobile is free to download and use from Google Play and Apple App Store.

C.A.T fleet management

Register and maintain all your gC.A.T4 and Genny 4 products. Check when the C.A.T calibration is due to expire.

Online storage

The C.A.T Manager Online system stores and backs-up all the data in a secure cloud. No need to change your company's IT infrastructure.

C.A.T operator feedback

C.A.T Manager Mobile app allows operators to receive immediate on-site feedback, helping them to improve their performance and to operate more safely.

Survey analysis and usage reporting

All scans received from C.A.T Manager Mobile, or uploaded using the web upload function, are automatically grouped into survey tasks and can be reviewed using a standard web browser. Usage analysis and survey reports can be generated, and downloaded as PDF files.

Local download

Retrieve all your data from the C.A.T Manager cloud to store on your PC or local network.

Pro Subscriptions

Subscribers to the Pro version also benefit from:

Team and account management

gC.A.T4 operators can be organised by region, depot, accounts and contracts.

This allows managers to review the performance of different groups of users. Reports can be generated for customers and stakeholders, showing adherence to best practice, or documenting ongoing improvements.

Advanced statistical analysis

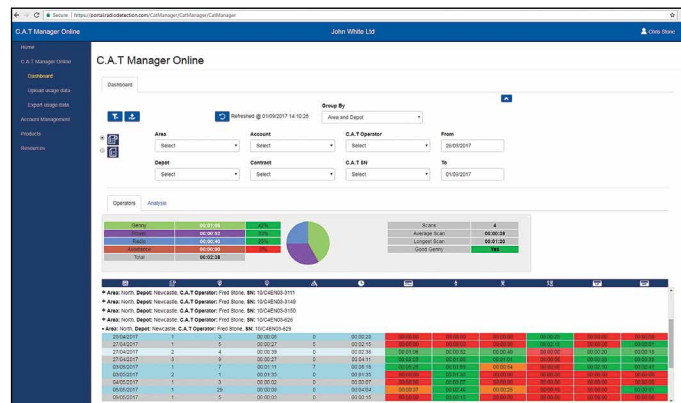
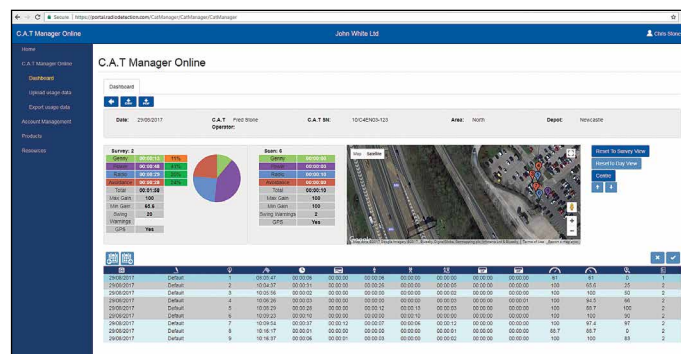
Access detailed analysis to assess users, regions and accounts. This allows objective performance reviews to aid continuous improvement processes.

Always Evolving

The C.A.T Manager Online system is continually evolving, offering new functionalities and features designed in collaboration with our customers, to simplify field and office operations.

To find out more, and see how C.A.T Manager Online can benefit your team, visit:

www.radiodetection.com/catmanageronline



Radiodetection Ltd. (UK) Western Drive, Bristol, BS14 0AF, UK
 Tel: +44 (0) 117 976 7776 rd.sales.uk@spx.com www.radiodetection.com

Copyright © 2017 Radiodetection Ltd. All rights reserved. Radiodetection is a subsidiary of SPX Corporation. Radiodetection, C.A.T, Genny, C.A.T4, gC.A.T4, Genny4, and C.A.T Manager, are registered trademarks of Radiodetection in the United Kingdom and/or other countries. The Bluetooth word, mark and logos are registered trademarks of Bluetooth SIG, Inc. and any use of such trademarks by Radiodetection is under license. Google Maps is a trademark of Google Inc. Apple is a trademark of Apple Inc, registered in the U.S. and other countries. Due to a policy of continued development, we reserve the right to alter or amend any published specification without notice. This document may not be copied, reproduced, transmitted, modified or used, in whole or in part, without the prior written consent of Radiodetection Ltd.