



Smart Vibration Monitor 9034 & 9038

Online/Fixed Vibration Monitoring

A4 Smart Vibration Monitor 9034 & 9038 TAW 0116

Features:

- 4 accelerometer channel & 8 accelerometer channel versions
- 24VDC (relay drive) switched output for each channel (warning/critical, g or velocity)
- 4 to 20mA output for each channel (g or velocity)
- Temperature input
- Tacho Input
- USB for connection to Smart Vibration Monitor PC software
- Ethernet socket for connection to Online Vibration analysis software

Advantages:

- Extremely cost effective – lowest cost/channel industrial vibration monitor/analyser
- Very easy to set up using Smart Vibration Monitor PC software
- 24/7 monitoring of critical plant operations

Benefits:

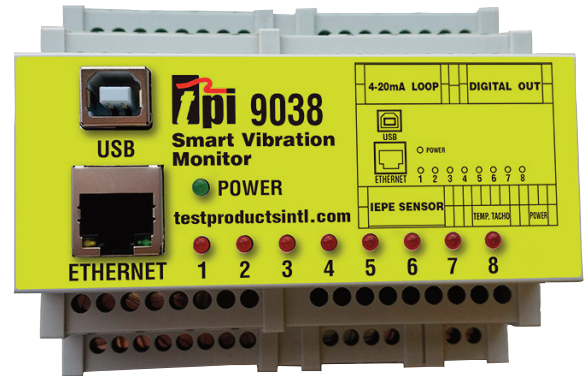
Single low-cost unit monitors plant with local alarms and connects to optional C-Trend II high functionality PC analysis software.

The Smart Vibration Monitor 9034 and Smart Vibration Monitor 9038 are the new generation of low price-high performance installed vibration analysers from TPI. With up to 8 accelerometer inputs, 8 digital outputs, 8 analogue outputs, temperature and tacho inputs as well as USB and Ethernet connectivity the Smart Vibration Monitor 9034 and Smart Vibration Monitor 9038 modules offer unrivalled price/per channel performance. The analysers can be used in several different ways:

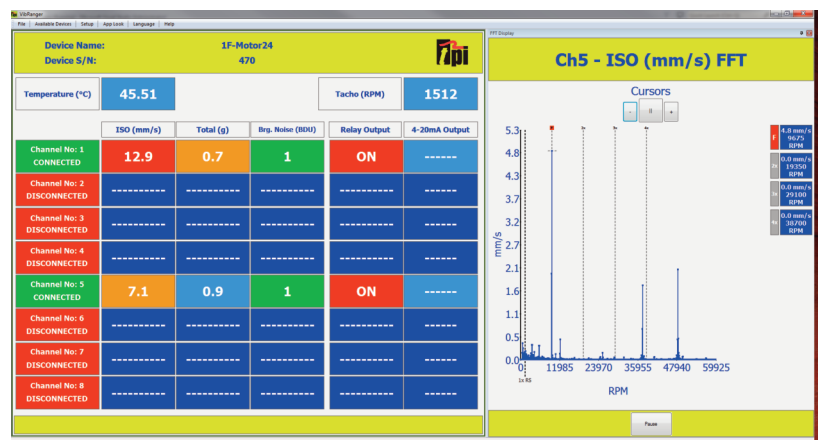
- **Standalone Operation** – Connect up to 8 accelerometers and up to 8 relays and instantaneously monitor and alarm on-key vibration points. Using the included Smart Vibration Monitor PC software the alarms can each independently be set to trigger on/either a velocity level or a g level. If a tacho is connected, a speed range can be set so as not to activate during machine start-up or shut-down.
- **Legacy Systems Operation** – for each connected accelerometer, the Smart Vibration Monitor units can also output levels of vibration (g or velocity) as 4 to 20mA signals for connection to existing monitoring systems such as PLCs, etc.

The Smart Vibration Monitor 9034 and Smart Vibration Monitor 9038 modules are supplied to work in any, or all, modes right out of the box so it truly is a system that will grow with your requirements.

The Smart Vibration Monitor modules are perfect for extremely cost-effective monitoring of critical plants operations and when used in conjunction with the TPI 9070, 9080 and 9041, vibration analysers provide the complete CBM solution.



- **PC Operation** – If a laptop/PC is connected via a USB cable, up to 64 modules can be monitored and the vibration levels displayed on screen. With the PC connected more detailed vibration analysis can be carried out with optional C-Trend II software.
- **C-Trend II** – By purchasing optional C-Trend II software it's possible to view and analyse the long term trend of all readings as well as being able to see FFT's of all logged data.
- **Online Cloud Operation** – by subscribing to TPI's Data Decypher cloud-based service all installed modules can be monitored and analysed from a single web-based interface. Just log on via your standard internet browser and all modules can be viewed and configured. Furthermore, detailed reporting is just a click away, as is automatic alarm notification via email.





Online/Fixed Vibration Monitoring

	Smart Vibration Monitor 9034	Smart Vibration Monitor 9038
Measurement		
IEPE Accelerometer Input Channels	4	8
Accelerometer Sampling Frequency		25.6kHz
4-20mA Output Channels	4	8
24VDC Digital Outputs	4	8
24VDC Dig. Output Current Max		100mA
Digital Output Alarm		Acceleration or Velocity (Channel Selectable)
Tachometer Input		1 (0V to any voltage upto +24VDC)
Frequency Dependent Alarms		Yes (using Tachometer)
Temperature Input		1 (Typically 10mV/°C)
PC Connection		USB
Internet/Cloud Connection		Ethernet
PC Software		
Vibration Alarms	4	Vibration 8
Temperature Alarm	1	Temperature 1
Alarm Choice		Acceleration AND/OR Velocity (channel selectable)
FFT		800 lines as Standard / Up to 51,200 lines option
Time Waveform		Yes (C-Trend II)
Electrical		
Supply Voltage		USB or 24VDC
Supply Current		500mA
Mechanical		
Environmental		IP50
Operating Temperature °C		0-55°C (32-151°F)
Storage Temperature °C		0-55°C (32-151°F)
Mounting		DIN Rail
Part Number	9034	9038

Test Products International World Wide Locations

Test Products International USA
 9615 SW Allen Boulevard
 Beaverton, OR 97005
 Email:
 tech@tpi-thevalueleader.com

Test Products International Canada
 342 Bronte St. South
 Unit #9 Milton, Ontario L9T 5B7
 Email:
 info@tpicanada.com

Test Products International Europe Ltd.
 Longley House
 International Drive
 Crawley
 RH10 6AQ
 Email:
 sales@tpieurope.com

TPI-AsiaPacific Co., Ltd.
 58 Gaetbeol-ro, Yeonsu-gu,
 Incheon, Korea
 Email:
 sales@tpiasiapacific.com

Test the TPI Advantage

www.tpieurope.com