

SOFTWARE USER GUIDE

**Megger**<sup>®</sup>

# **MPAC Series Analyst Software V2.0**

## Acoustic Imaging Camera Reporting Software



Register →  
[megger.com/register](https://megger.com/register)



User Guide →  
Firmware updates



Support →  
[megger.com/support](https://megger.com/support)



**EN**  
ENGLISH



### **This document is copyright of:**

Megger Limited, Archcliffe Road, Dover, Kent CT17 9EN. ENGLAND  
T +44 (0)1304 502101 F +44 (0)1304 207342 [www.megger.com](http://www.megger.com)

This manual supersedes all previous issues of this manual. Please ensure that you are using the most recent issue of this document. Destroy any copies that are of an older issue.

**Filename:** MPAC208-Software\_UG\_V01

**Modification date:** 01 2026

Megger Limited reserves the right to alter the specification of its products from time to time without notice. Although every effort is made to ensure the accuracy of the information contained within this document it is not warranted or represented by Megger Limited to be a complete and up-to-date description.

For Patent information about this instrument refer to the following web site:

[megger.com/patents](http://megger.com/patents)

## **Declaration of Conformity**

Hereby, Megger Instruments Limited declares that radio equipment supplied by Megger Instruments Limited described in this user guide is in compliance with Directive 2014/53/EU. Other equipment supplied by Megger Instruments Limited described in this user guide is in compliance with Directives 2014/30/EU and 2014/35/EU where they apply.

The full text of Megger Instruments EU declarations of conformity are available at the following internet address:

[megger.com/eu-dofc](http://megger.com/eu-dofc)

# Contents

---

<b>1. Introduction .....</b>	<b>4</b>
1.1 Company web site .....	4
1.2 Technical Support .....	4
<b>2. Installation Guide .....</b>	<b>5</b>
2.1 Hardware Requirements .....	5
2.2 Analyst Software Download .....	5
2.3 Installation .....	5
<b>3. Software Interface .....</b>	<b>7</b>
3.1 Main Interface .....	7
3.1.1 Report Toolbar .....	8
3.1.2 Report Area: .....	8
3.1.3 About and Settings: .....	8
3.1.4 Data Bar .....	9
3.2 Data Import .....	9
3.2.1 Setting up Wi-Fi on the MPAC208 .....	9
3.2.2 Setting up network sharing on the MPAC208 .....	9
3.2.3 Import data from the network (MPAC208) .....	10
3.2.4 Network settings (MPAC128) .....	11
3.2.5 Import data from local .....	12
3.2.6 Drag and drop data files .....	13
3.2.7 Data toolbar .....	14
<b>4. Report .....</b>	<b>15</b>
4.1 Report Cover .....	15
4.2 Report Overview .....	15
4.3 General and Mechanical Summary .....	16
4.4 Gas Summary .....	17
4.5 Partial Discharge Summary .....	18
4.6 Test information .....	19
4.7 Test data .....	19
4.8 Results analysis .....	20
4.9 Reanalysing image .....	21
4.10 Charts .....	22
<b>5. Thermal file analysis (MPAC208 series only) .....</b>	<b>23</b>
5.1 Test information .....	23
5.2 Test data .....	23
5.3 Thermal image/video .....	23
5.4 Results analysis .....	24
5.5 Temperature analysis .....	24
<b>6. Worldwide Sales Offices .....</b>	<b>25</b>

## 1. Introduction

---

The Megger Analyst software helps the user manage thousands of acoustic images, (as well as thermal images - MPAC208 series only) and videos from their MPAC device. This is compatible with both the **MPAC128** as well as the **MPAC208** series. This software lets the users dive deeper into the acoustic and thermal images, offering seamless viewing, analysis and editing capabilities for both pictures and videos captured by the MPAC devices. From intricate data examination, to the creation of comprehensive test reports, this tool serves as an indispensable companion in unlocking the full potential of acoustic imaging technology.

The software can also be used to perform detailed analysis of thermal images and videos captured using the MPAC208 series.

Please note:

**MPAC128** and **MPAC128-ATEX** are our 1st Generation of Professional Acoustic Imaging Cameras.

**MPAC208** and **MPAC208-IECEX** are our 2nd Generation of Professional Acoustic Imaging Cameras.

### 1.1 Company web site

Occasionally an information bulletin may be issued via the Megger web site. This may concern new accessories, new usage instructions or a software update. Please occasionally check on the Megger web site for anything applicable to your Megger instruments.

**[www.megger.com](http://www.megger.com)**

### 1.2 Technical Support

For technical support with your product or software please contact Megger on the details below.

**Technical Support Megger U.K.**

Tel: +44 (0) 1304 502 102

or visit **[megger.com/support](http://megger.com/support)**

International customers can also contact your local Sales Office.

**See chapter 6. Worldwide Sales Offices on page 25.**

## 2. Installation Guide

### 2.1 Hardware Requirements

- Windows system version: Windows 10\11.
- Processor: 1GHz or faster processor.
- Graphics card: DirectX 9 or higher (including WDDM 1.0 driver).
- Hard disk space: 16GB (32-bit) OS, or 20GB (64-bit) OS is recommended.
- RAM: 1GB (32-bit) or 2GB (64-bit).
- Display: 800\*600 or higher.

**NOTE :** Windows 7 is not supported.

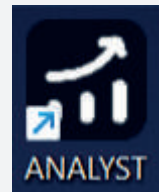
### 2.2 Analyst Software Download

The Analyst software for MPAC series can be downloaded from the Megger website [www.megger.com](http://www.megger.com) or using the QR code:



The Analyst Software is a standalone application, once downloaded it can be run directly from the location it is saved, or it can be moved to a suitable location on the system for easy access and loading.

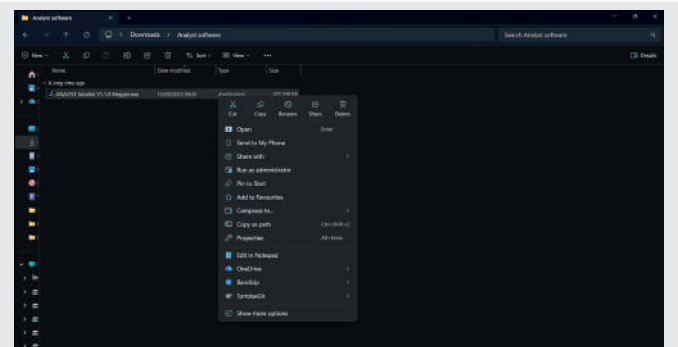
When installed, double click on **Analyst** tool icon to load the application:



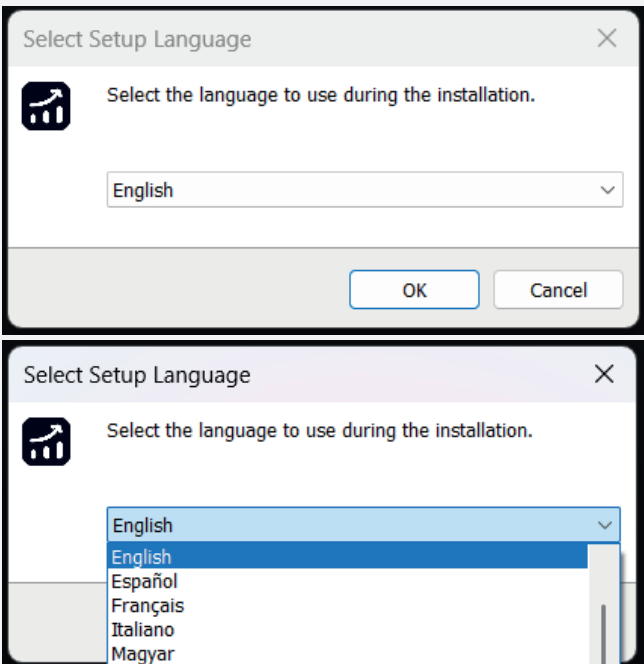
### 2.3 Installation

After downloading the Analyst software from the Megger website, follow the steps below to install it:

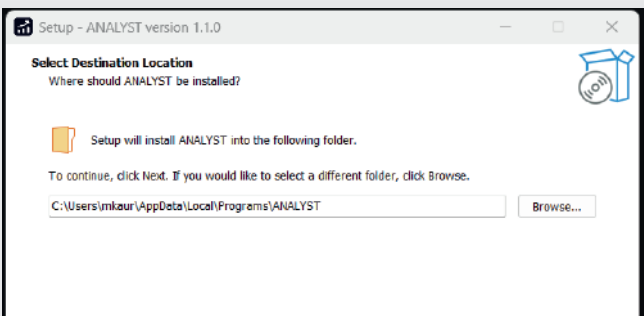
Double-click the .exe downloaded file or right-click and select **Run as Administrator**.



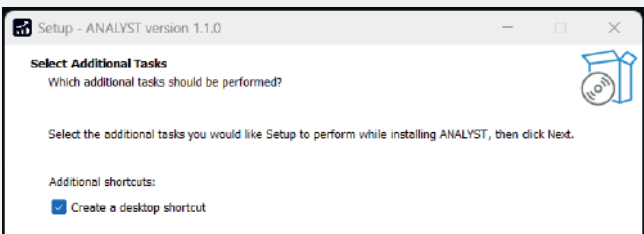
In the setup box, select the relevant language and click **OK**.



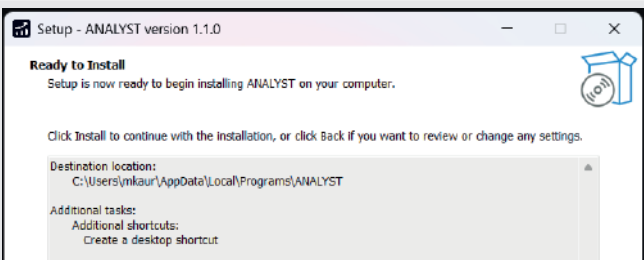
Select the installation path by clicking on **Browse** and then click **Next**.



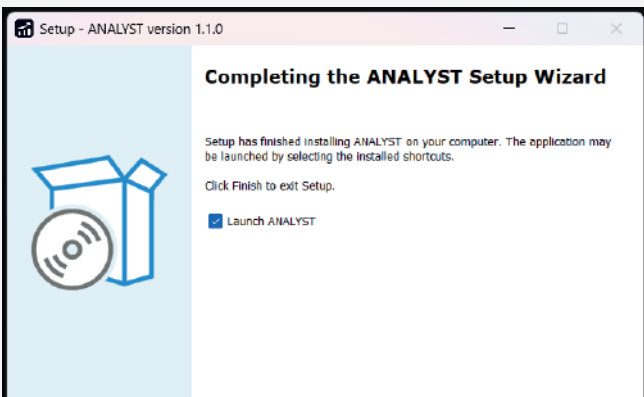
To create a desktop shortcut, tick the checkbox and click **Next**.



Click **Install** to start the installation.



Click **Finish** and tick the checkbox to launch the software.



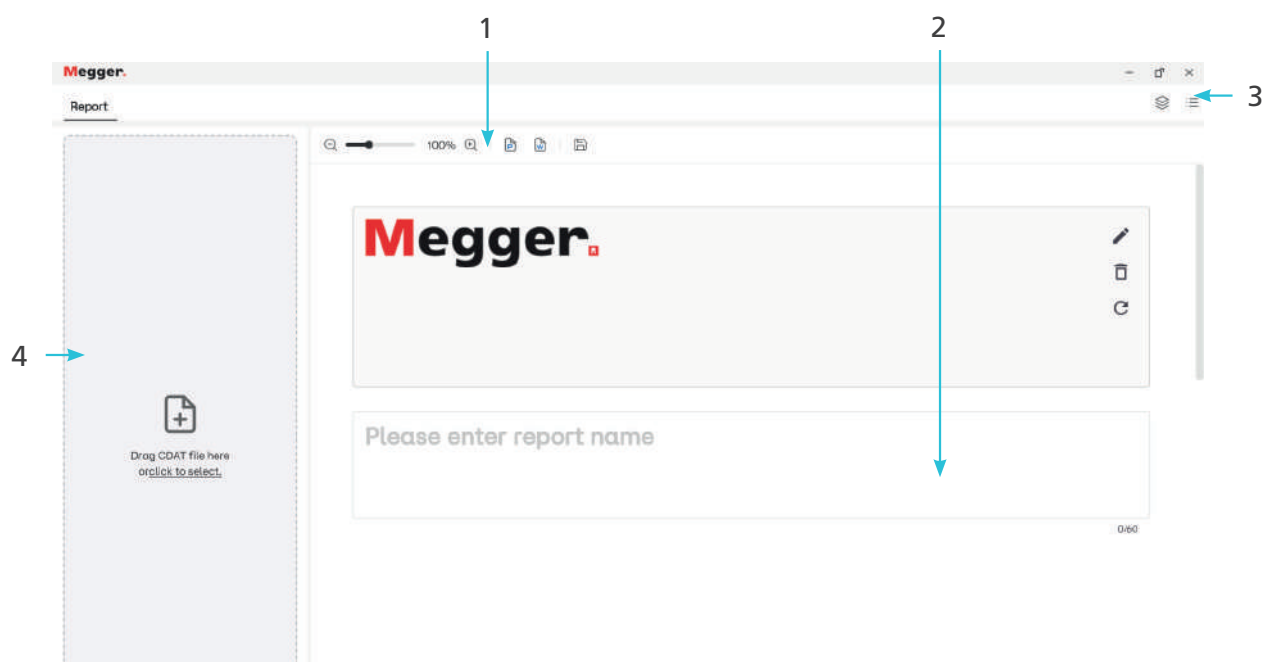
### 3. Software Interface

#### 3.1 Main Interface

When the software is run, the users are given an option to select between the First and the Second generation of software. The first generation is compatible with the MPAC128 and MPAC128-ATEX whereas the second generation is compatible with MPAC208 and MPAC208-IECEX.




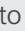
Next, the Home page will appear:

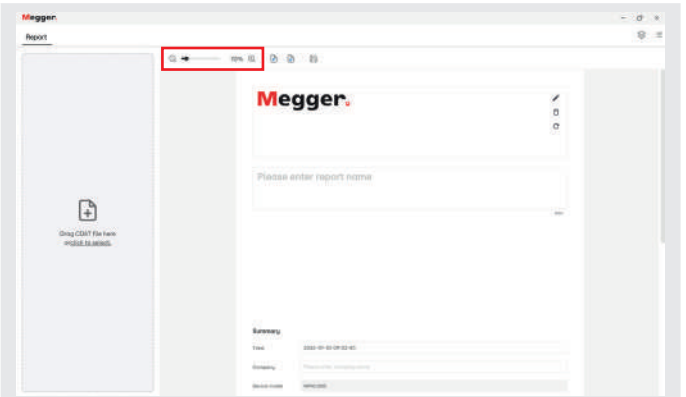


Item	Description	Item	Description
1	Report toolbar	3	About and settings
2	Report	4	Data bar

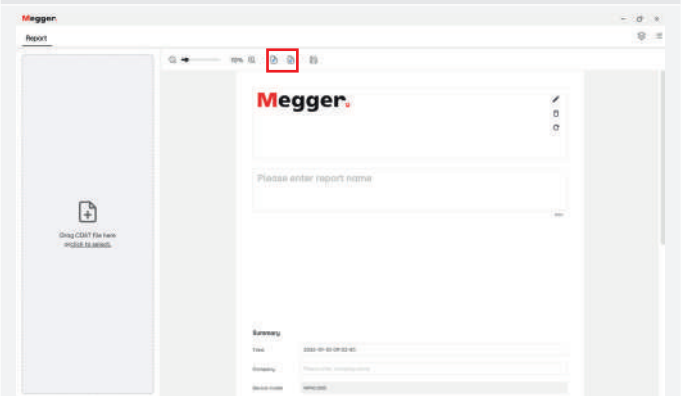
## Software Interface


### 3.1.1 Report Toolbar

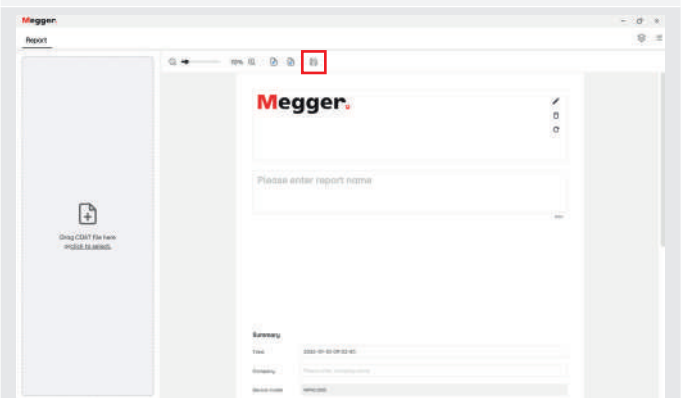
Use the slider to zoom in or zoom out of the report or click  to zoom out and  to zoom in.



Click  to generate a PDF file of your report or on  for a Word file.



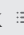
Click on  to save all the changes made to the report.

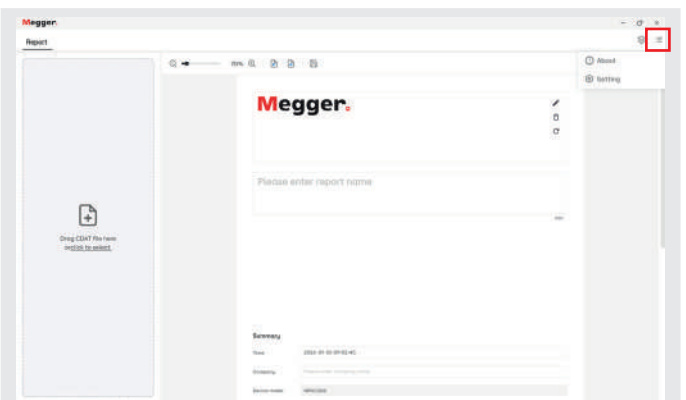


### 3.1.2 Report Area:

Displays the report cover information, report directory, and report data analysis details.

### 3.1.3 About and Settings:

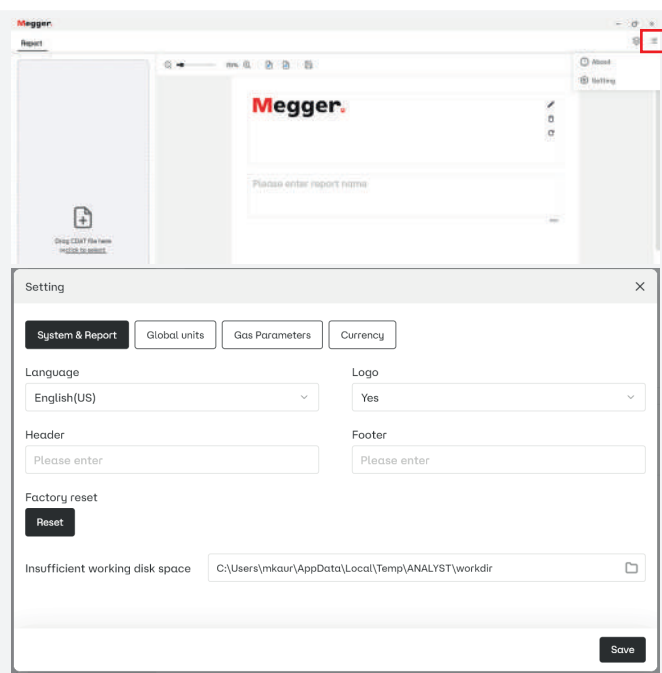
Click  and then on **About** to view the software version and other details.





Click on ☰ and then ⚙ to enter the software settings interface including language, logo, Header and Footer, various units and parameters for Gas Leak detection.

Make any changes as required and click on **Save** to save the changes.



### 3.1.4 Data Bar

Import test data files, display and manage imported data. Refer to next section for more details.

## 3.2 Data Import

**NOTE :** Network sharing and Wi-Fi cannot be enabled simultaneously, the device can operate only in one of these modes.

### 3.2.1 Setting up Wi-Fi on the MPAC208

Tap on the toggle button to switch Wi-Fi **ON**.

Tap on **Refresh** to update the list of available Wi-Fi connections.  
Recent Wi-Fi connections will appear under **Networks**.

Tap on a Wi-Fi network from the list under **Networks** and input the password in the pop-up window to connect to it, if required. Tap on **OK** to confirm.

After connecting to the network, tap on the name or ➡ to view details.

Tap on **Delete this network** and **confirm** to delete the Wi-Fi network.

Tap on the toggle button for **Auto connect** for the device to connect automatically to this network when Wi-Fi is switched on.

Tap on **Password** to view the current saved password. IPV4 settings can be used to view the network information and choose between automatic IP configuration or manual configuration.

Tap **X** to save and exit.

### 3.2.2 Setting up network sharing on the MPAC208

To access the files (images/videos) from the MPAC208 series from the software, Ethernet or Hotspot functionality can be used. Tap on the toggle button to switch on/off the Ethernet and Hotspot for the camera.

Tap on **Download camera photos** to view instructions and QR codes to view reports.

Tap on the toggle button to switch Network sharing **ON**.

Tap on **Name** to modify the device's name.  
Type in the name using the pop-up keyboard and tap on ✓ to save.

Tap on **Password** to modify the device's name.  
Type in the name using the pop-up keyboard and tap on ✓ to save.

Tap **X** to save and exit.

### 3.2.3 Import data from the network (MPAC208)

Click on the tab on left hand side which says **Drag the data folder or click to select** for the file import pop-up window to appear.

Click on **Import from network** to import files from the network. This will open the Import from network pop-up window.

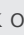
Connect the PC to the MPAC208's hotspot or connect the MPAC208 and the PC to the same Wi-Fi network.


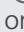
Click on **Scan** to locate the device and select MPAC208 from the dropdown menu.

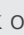
Click **Connect** to connect to the device and view the files on the device.

Click on the **album** to select it, or **double-click** the album to enter the album and view the photos and videos. Click on the files to select the photos and videos to be imported.

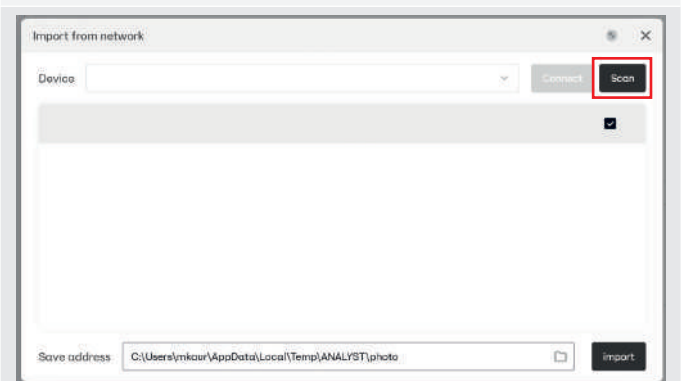
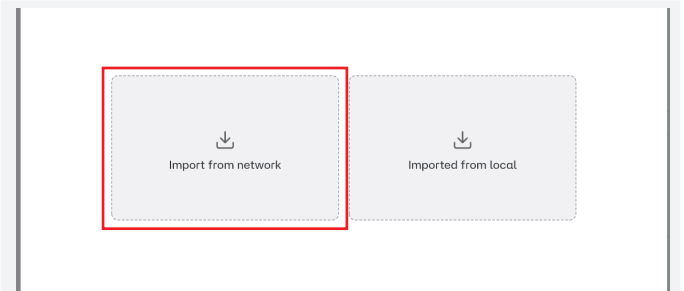
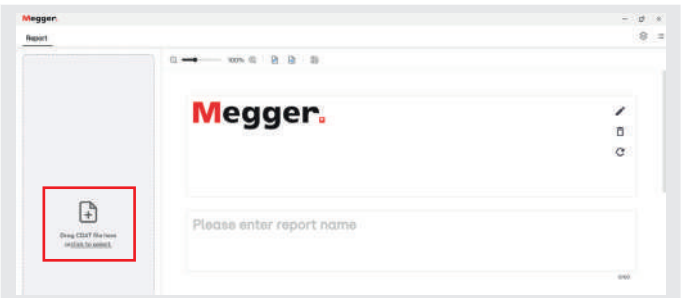
Click on ☐ to select all the available files.

Click on  to enter the time filter interface to be able to filter the photos and videos captured in the selected time frame.

Click on  to view all the files in a chronological order and click on  to view them in reverse chronological order.

Click on  to browse the location to save the files on PC and then click on **Import** to import the files. After the import is completed, the import file pop-up window will disappear, and the imported file will be automatically loaded into the data column.

**NOTE :** Importing too many files at once may cause lag. It is recommended to import less than 100 photos and less than 50 videos in one go.



### 3.2.4 Network settings (MPAC128)

The Megger MPAC cameras can be connected directly to a PC by adjusting the network settings accordingly. The cameras provide a hard wired connection using USB-C to Ethernet adaptor plugged into the USB-C communication port and an ethernet cable plugged into the PC.

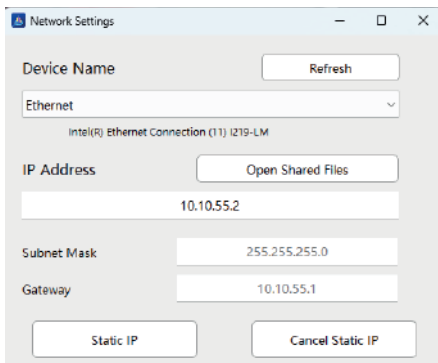
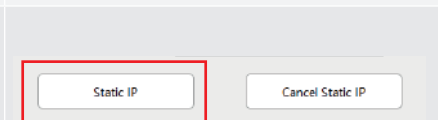
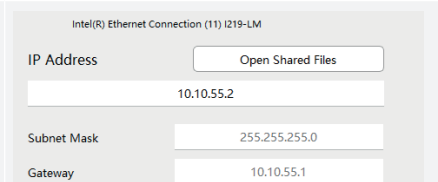
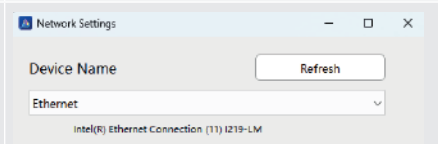
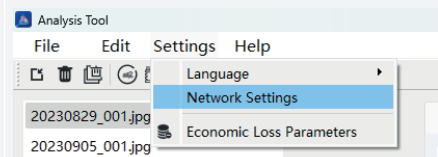
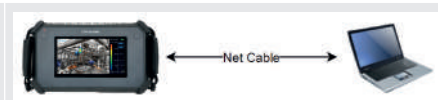


Fig 1: Network settings options

<b>Refresh</b>	Get the list of computer NIC (Network Interface Card) names. When there are NIC changes, refresh button needs to be clicked manually.
<b>IP Address</b>	To set the static IP address of the NIC (10.10.55.xxx, except 10.10.55.55).
<b>Open Shared Files</b>	When the computer is successfully connected to the equipment, navigate to the folder containing the files to be imported. The MPAC needs to have a microSD card present in the microSD card slot.
<b>Subnet Mark</b>	This is a default address and cannot be changed.
<b>Gateway</b>	This is a default address and cannot be changed.
<b>Static IP</b>	Applies the "IP address" to the currently selected network card.
<b>Cancel Static IP</b>	Cancels the static IP of the currently selected NIC and sets it to a dynamically obtained IP address.

#### To establish a connection between the camera and the computer, follow these steps:

1. Connect the camera to the computer via a USB-C to ethernet cable.
2. In the Analysis Tool software, open the **Network Settings** interface and click the **Refresh** button to get the list of NIC names.
3. Select the NIC name connected to the camera.
4. Edit the **IP Address**.
5. Click **Static IP** button.
6. Wait 1-2 minutes until the network card applies the IP and connects to the MPAC and click on the **Open Shared File** button to operate the file.
7. Click **Cancel Static IP** button when finished and before disconnection.



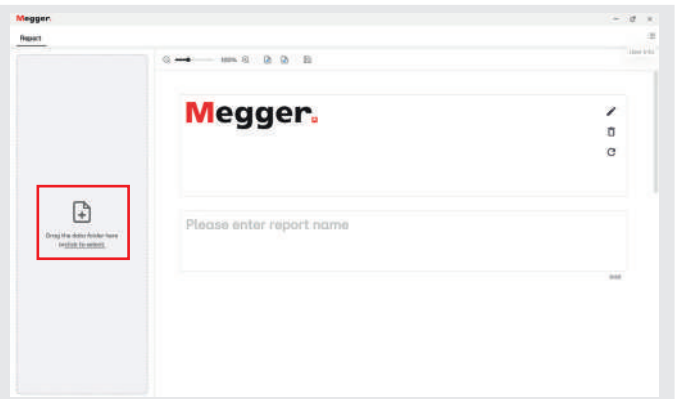
## Software Interface

### 3.2.5 Import data from local

#### ■ MPAC128 series

Connect the device to the PC via a USB cable.

Click on the left of the interface where it says **Drag the data folder or click to select** for the file import pop-up window to appear.

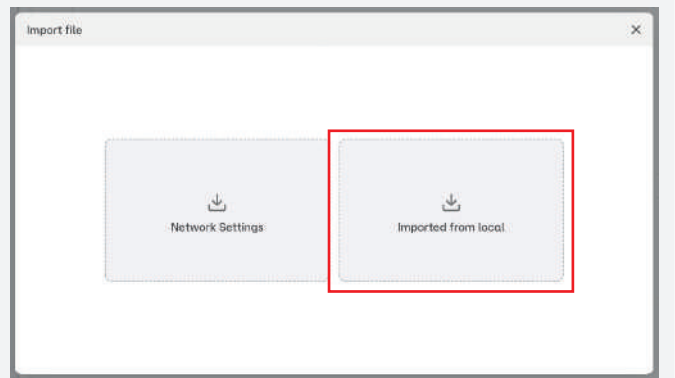


Click on **Import from local** to import files from the MPAC128. This will open the PC File Explorer.

Locate and click on the camera under **Devices and drives on this PC**.

The albums created in the MPACs can be found in the imager folder.

Click on **open the device data folder**, select the files required, and copy the selected files to your PC.



Once the files are copied to the PC/laptop, locate and select the album to be imported to the Analyst software. Click on **Open**. Remember to select the **parent folder/album** and NOT the individual files.

The data folder can also be dragged and dropped on the area that reads **Drag the data folder here or click to select**. This will also load the files into the software.

**NOTE :** For the MPAC128, the folder must contain the file **usrInfo.ini** for the software to load the files correctly. If this does not appear please contact Technical Support. **See chapter 1.2 Technical Support on page 4.**

## ■ MPAC208 series

Connect the device to the PC via a USB cable.

Click on the tab on left hand side which says **Drag CDAT file here or click to select** for the file import pop-up window to appear.

Click on **Import from local** to import files from the MPAC208 connected to the PC. This will open the PC File Explorer.

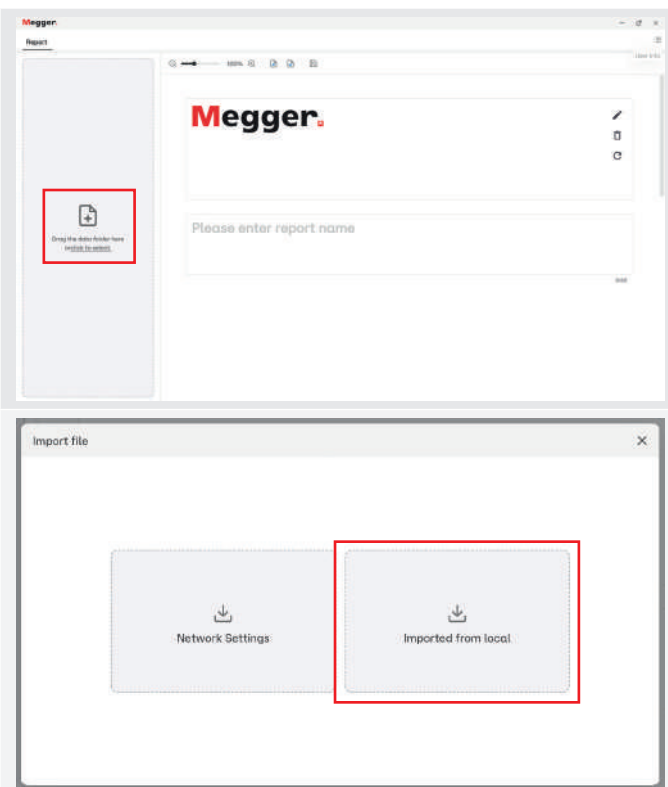
Locate and click on the device under **Devices and drives on This PC**.

The albums created in the MPAC208 can be found in the imager folder.

Click on **open the device data folder**, select **.cdat** files, and copy the selected files to your PC/laptop.

Once the files are copied to the PC/laptop, locate and select the album to be imported to the Analyst software and click on **Open**.

Select the **.cdat** file to be imported, and then click **Open** to import the data into the data column.




### 3.2.6 Drag and drop data files

- Locate the files in the local storage using **File Explorer**
- Select the files to import
- **Press and hold the left mouse button**
- **Drag the files** to the data column area
- **Release** the left mouse button
- Wait for the data to be loaded into the data column to begin analysis.

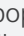
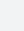
### 3.2.7 Data toolbar

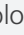
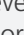
Click on the **checkbox** to select all the imported files.

Alternatively, click on the checkboxes of individual files to select/deselect them.


Click on  and **confirm** to delete the selected files.


Alternatively, click on the  icon of individual files to delete them.


Click on  to bring up a time filter pop-up window. Select the **start** and **end date** as well as the **time** and click on **Apply** to filter the files accordingly. Click on  to cancel the filter.


Click on  to sort the files in chronological order and click on it again  to sort them in reverse chronological order (latter is visible only if files are sorted in chronological order).

Click on  to filter files based on **modes**.

Click on  to view files related to **General mode**.

Click on  to view files related to **Gas Leak mode**.

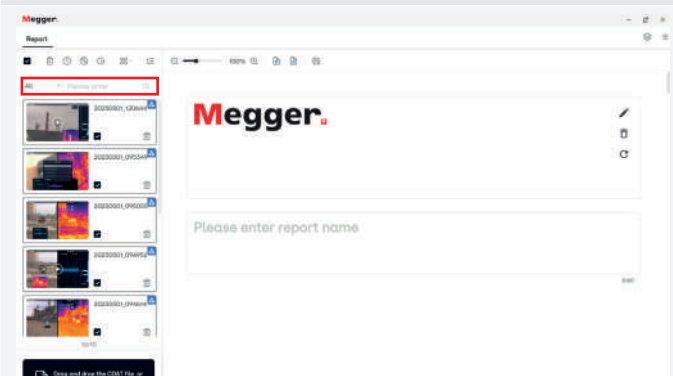
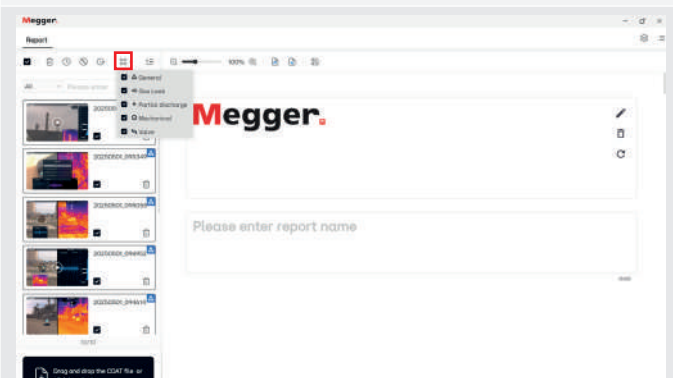
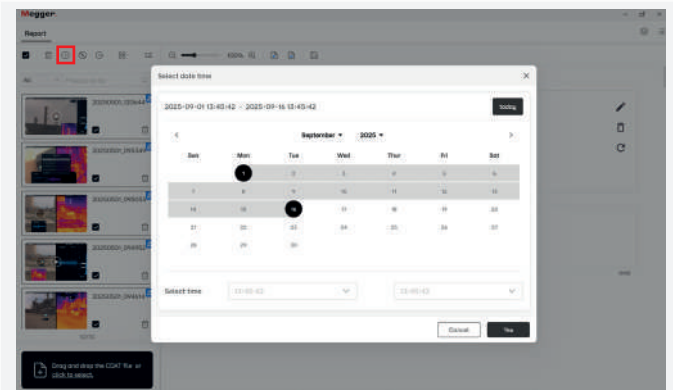
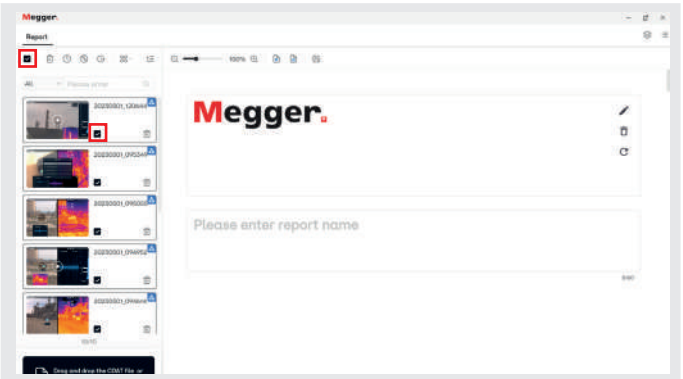
Click on  to view files related to **Partial Discharge mode**.

Click on  to view files related to **Mechanical mode**.

**NOTE :** The **Mechanical mode** is supported by the MPAC208 cameras.


Type in name, time, asset name, asset ID or text description to find a specific file from the imported files.

**NOTE :** 20230925\_212325 means the data was taken at 21:23:25 on September 25, 2023.

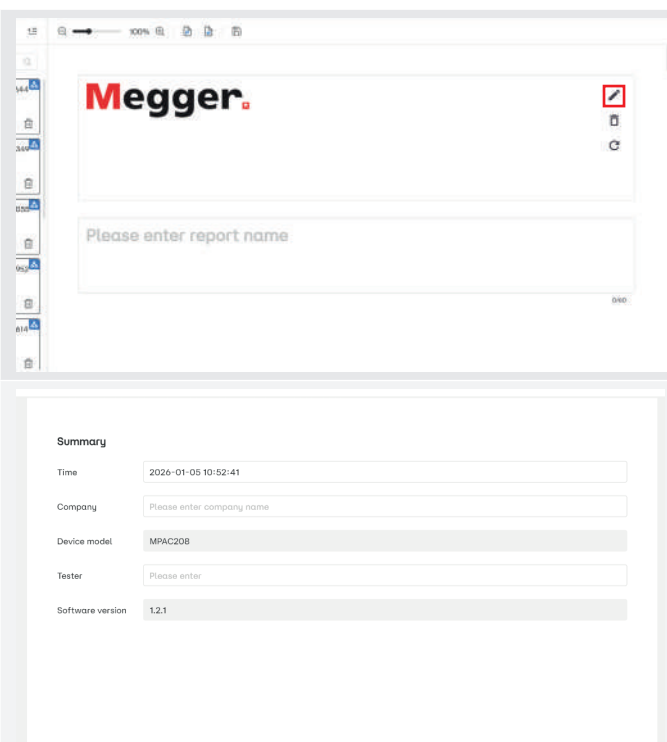


## 4. Report

### 4.1 Report Cover

The **company logo** can be placed on the report cover. It is recommended to place a logo with an aspect ratio of 6:1~10:1. Click  to enter the file manager interface to select the logo. We recommend using a PNG format image.

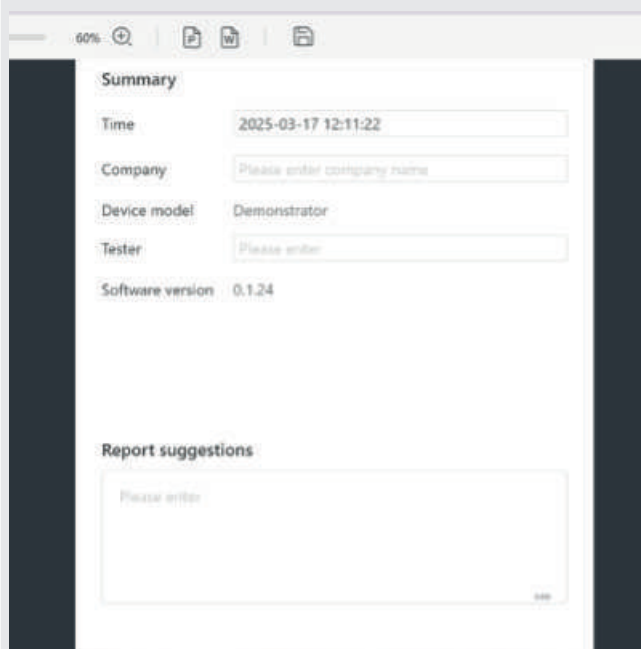
The user can enter the **report name** to be displayed when exporting the report.



The screenshot displays the Report Cover interface. The top part features the Megger logo and a text input field labeled 'Please enter report name'. Below this is a 'Summary' section with several input fields: 'Time' (2026-01-05 10:52:41), 'Company' (Please enter company name), 'Device model' (MPAC208), 'Tester' (Please enter), and 'Software version' (1.2.1).

### 4.2 Report Overview

- **Time:** The time when the data is imported into the software.
- **Company:** Enter the company name in the report.
- **Device model:** The model of the device used for capturing the photo/video. This is automatically imported from the data file.
- **Tester:** The person who carried out the testing.
- **Software version:** Automatically imports the software version of the device from the data file (MPAC208 only).
- **Report Suggestions:** Details and description about the report being generated

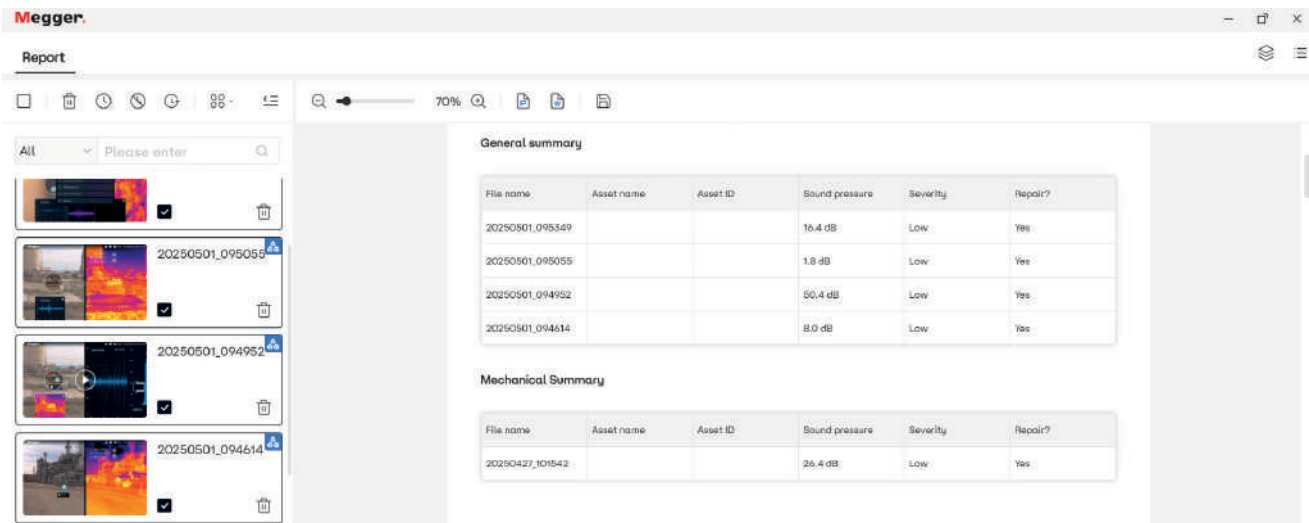


The screenshot shows the Report Overview interface. The 'Summary' section contains input fields for 'Time' (2025-03-17 12:11:22), 'Company' (Please enter company name), 'Device model' (Demonstrator), 'Tester' (Please enter), and 'Software version' (0.1.24). Below this is a 'Report suggestions' section with a text input field labeled 'Please enter'.

### 4.3 General and Mechanical Summary

If **General** or **Mechanical mode** was selected when the image/video file was captured, the following summary box will be displayed.

**NOTE :** Mechanical mode is only available for the MPAC208 series.

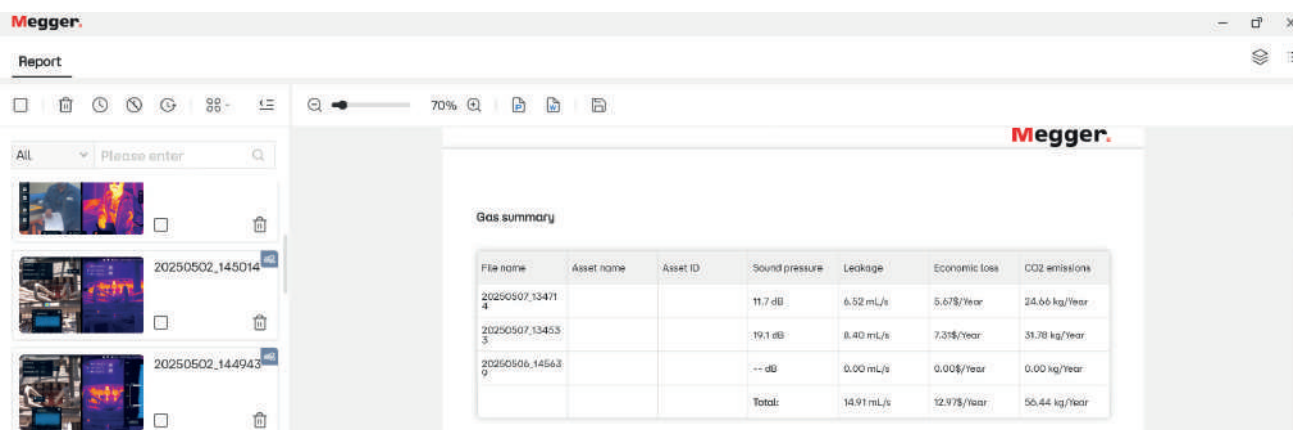


- **File name:** Displays the file name
- **Asset name:** Displays the asset name, taken from the MPAC Files>Label>Asset Name. The field can be edited in the Test information>Asset name tab (**See chapter 4.6 Test information on page 19.**) (only available for the MPAC208 series).
- **Asset ID:** Displays the asset ID, taken from the MPAC Files>Label>Asset ID. The field can be edited in the Test information>Asset ID tab. (**See chapter 4.6 Test information on page 19.**) (only available for the MPAC208 series).
- **Fault Point Location:** Displays the fault point location. The field can be edited in the Test information>Fault Point Location tab. (**See chapter 4.6 Test information on page 19.**) (only available for the MPAC128 series).
- **Sound pressure:** The sound pressure comes from the sound and image data recorded during the test.
- **Severity:** Displays the severity level, taken from the MPAC Files>Label>Severity. The field can be edited in the Result Analysis>Severity tab. (**See chapter 4.8 Results analysis on page 20.**)
- **Repair:** Displays whether a repair is required, taken from the MPAC Files>Label>Severity. The field can be edited in the Result Analysis>Repair? tab. (**See chapter 4.8 Results analysis on page 20.**)



## 4.4 Gas Summary

If **Gas mode** was selected when the image/video file was captured, the following summary box will be displayed.



- **File name:** Displays the file name
- **Asset name:** Displays the asset name, taken from the MPAC208 Files>Label>Asset Name. The field can be edited in the Test information>Asset name tab (**See chapter 4.6 Test information on page 19.**) (only available for the MPAC208 series).
- **Asset ID:** Displays the asset ID, taken from the MPAC Files>Label>Asset ID. The field can be edited in the Test information>Asset ID tab (**See chapter 4.6 Test information on page 19.**) (only available for the MPAC208 series).
- **Fault Point Location:** Displays the fault point location. The field can be edited in the Test information>Fault Point Location tab (**See chapter 4.6 Test information on page 19.**) (only available for the MPAC128 series).
- **Sound pressure:** The sound pressure comes from the sound and image data analysis.
- **Leakage:** The leakage value comes from the leakage estimated based on the sound pressure of the acoustic image analysis. The value is the same as Test data>Leakage. (**See chapter 4.8 Results analysis on page 20.**)
- **Economic loss:** The value is the same as Test data>Economic Loss, which comes from the economic loss estimated based on the leakage size of the acoustic image.

The estimation formula is as follows:

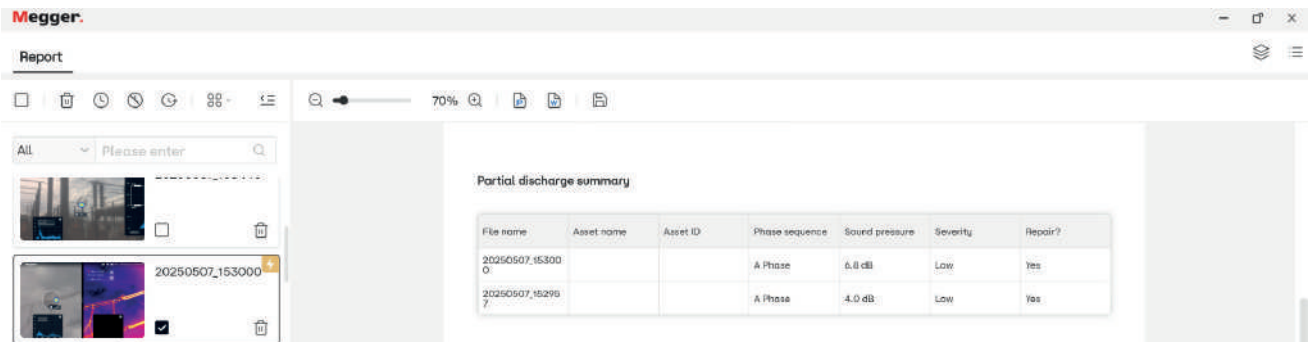
Gas Type	Economic loss formula
Air	Leakage (working condition) x specific power x energy cost x annual working time of the system
Other gases (such as oxygen)	Gas value (oxygen) x leakage (standard condition) x annual working time of the system

**NOTE :** The specific power is related to the compressor. The specific power is consistent with the specific power of the compressor. The energy cost is £/kWh (monetary units can be changed by the user). Modifying the gas value to be consistent with the current market value will make the estimated loss more accurate.

- **CO2 emissions:** This is calculated based on the carbon emissions generated per kWh. The average carbon dioxide emission factors vary with region. The value for CO2 coefficient can be edited in **Settings** for a more accurate estimation.

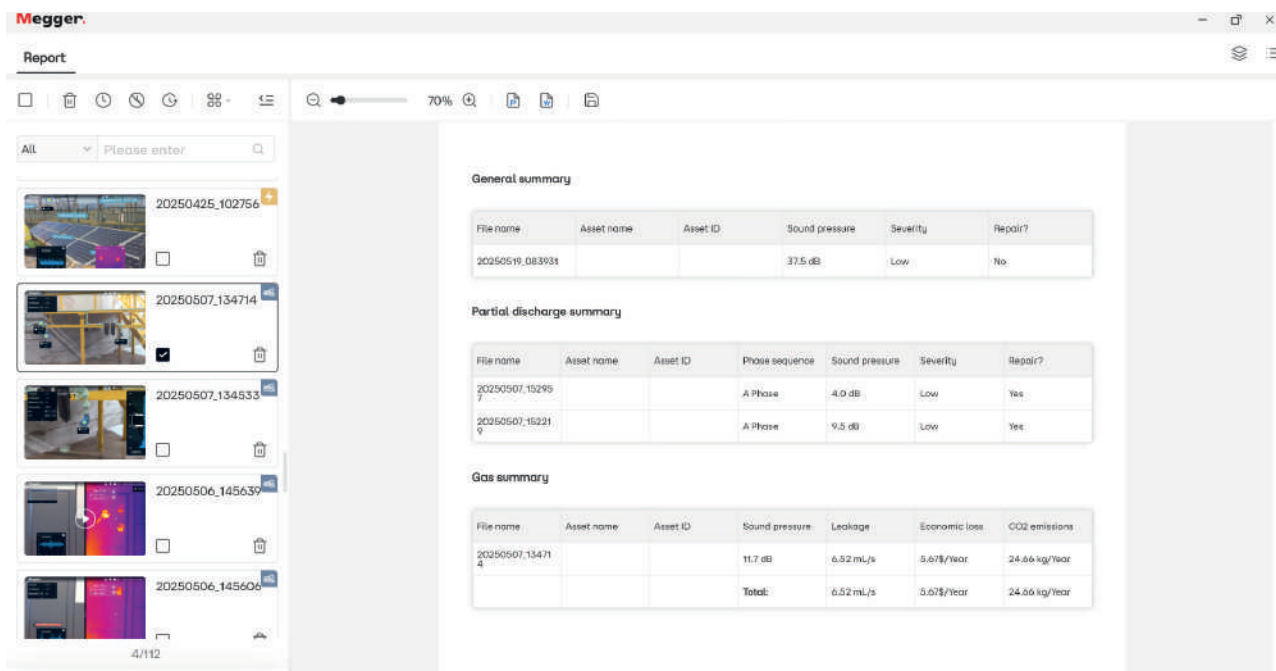
## 4.5 Partial Discharge Summary

If **Partial Discharge mode** was selected when the image/video file was captured, the following summary box will be displayed.



- **File name:** Displays the file name
- **Asset name:** Displays the asset name, taken from the MPAC Files>Label>Asset Name. The field can be edited in the Test information>Asset name tab (**See chapter 4.6 Test information on page 19.**) (only available for the MPAC208 series).
- **Asset ID:** Displays the asset ID, taken from the MPAC Files>Label>Asset ID. The field can be edited in the Test information>Asset ID tab (**See chapter 4.6 Test information on page 19.**) (only available for the MPAC208 series).
- **Fault Point Location:** Displays the fault point location. The field can be edited in the Test information>Fault Point Location tab (**See chapter 4.6 Test information on page 19.**) (only available for the MPAC128 series).
- **Phase:** The value is the same as Test data>Phase, which comes from MPAC Files>Label>Phase.
- **Sound pressure:** The sound pressure comes from the sound and image data recorded during the test.
- **Severity:** Displays the severity level, taken from the MPAC Files>Label>Severity. The field can be edited in the Result Analysis>Severity tab. (**See chapter 4.8 Results analysis on page 20.**)
- **Repair:** Displays whether a repair is required, taken from the MPAC Files>Label>Severity. The field can be edited in the Result Analysis>Repair? tab. (**See chapter 4.8 Results analysis on page 20.**)

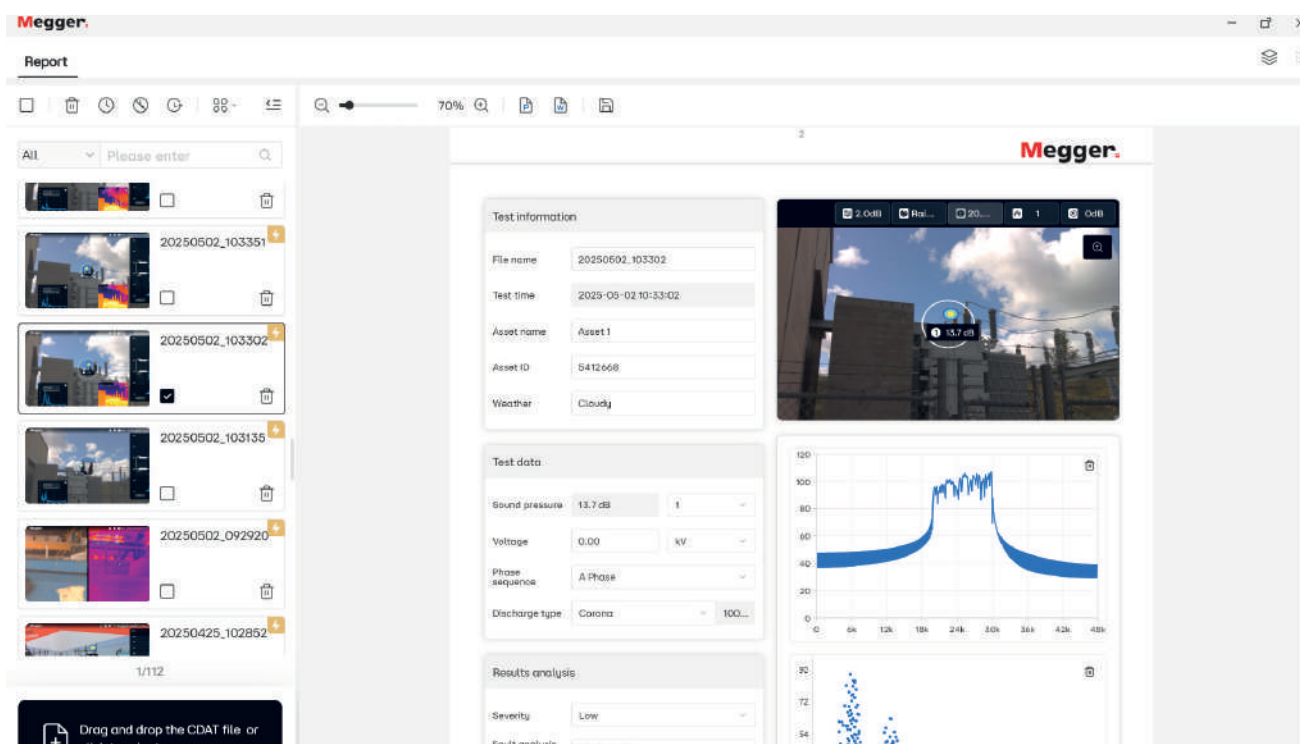
**NOTE :** If more than one file is selected, the summaries for all of them will be shown together.



## 4.6 Test information

This window shows the overview information of the test. It shows the File name, Test time, Asset name, Asset ID and Weather.

- **File name:** Displays the file name which is based on the test time.
- **Test time:** Displays the time when the test was performed.
- **Fault Point Analysis:** Displays the location of the test as entered (only available for the MPAC128 series).
- **Asset name:** This field is editable, and the asset name can be added here if missing (only available for the MPAC208 series).
- **Asset ID:** This field is editable, and the asset name can be added here if missing (only available for the MPAC208 series).
- **Weather:** The weather conditions can be added as a reference when regularly testing the same asset to identify any correlations (only available for the MPAC208 series).

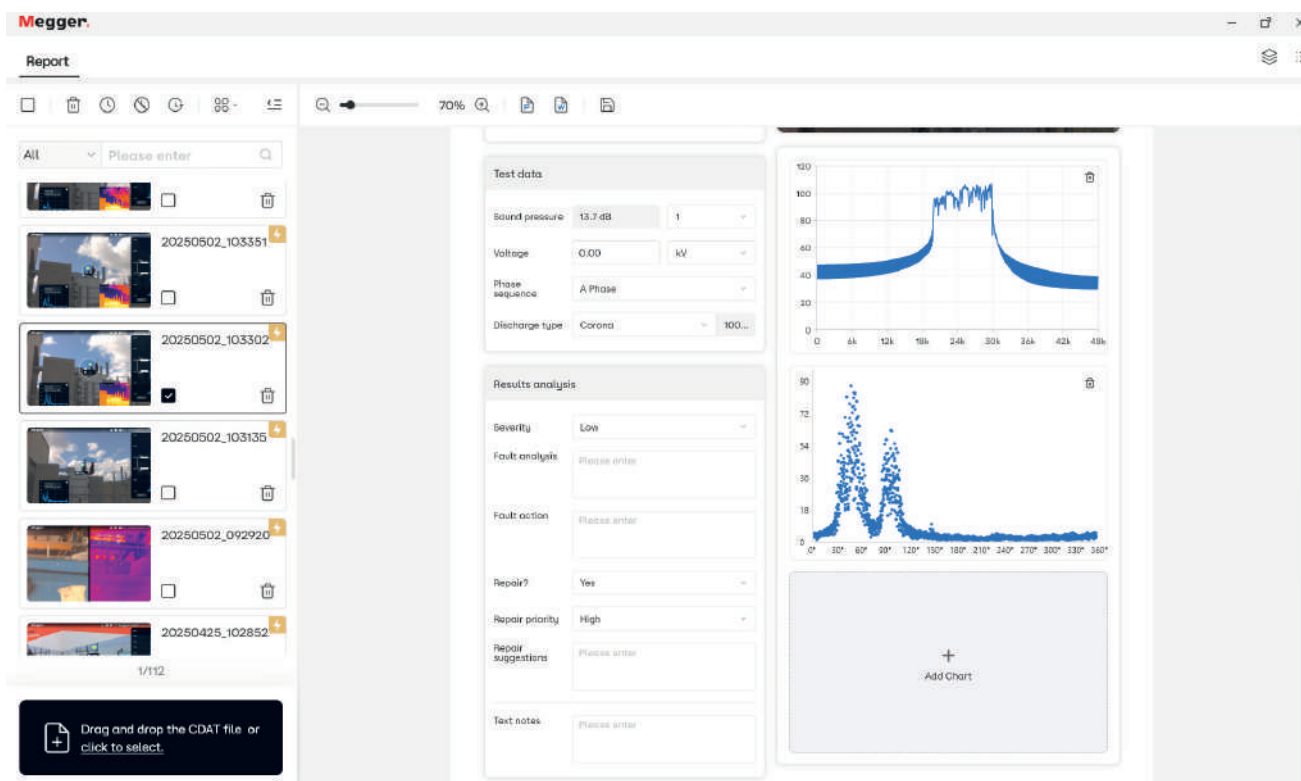


## 4.7 Test data

This window displays the test data. The fields are editable except for the Sound pressure that references the sound pressure level recorded during the test.

- **Sound pressure:** The sound pressure comes from the sound and image data recorded during the test. For more than one imaging point, select the number from the dropdown menu next to the sound pressure value.
- **Distance** (Partial Discharge mode)
- **Voltage** (Partial Discharge mode)
- **Phase** (Partial Discharge mode)
- **Discharge type** (Partial Discharge mode)

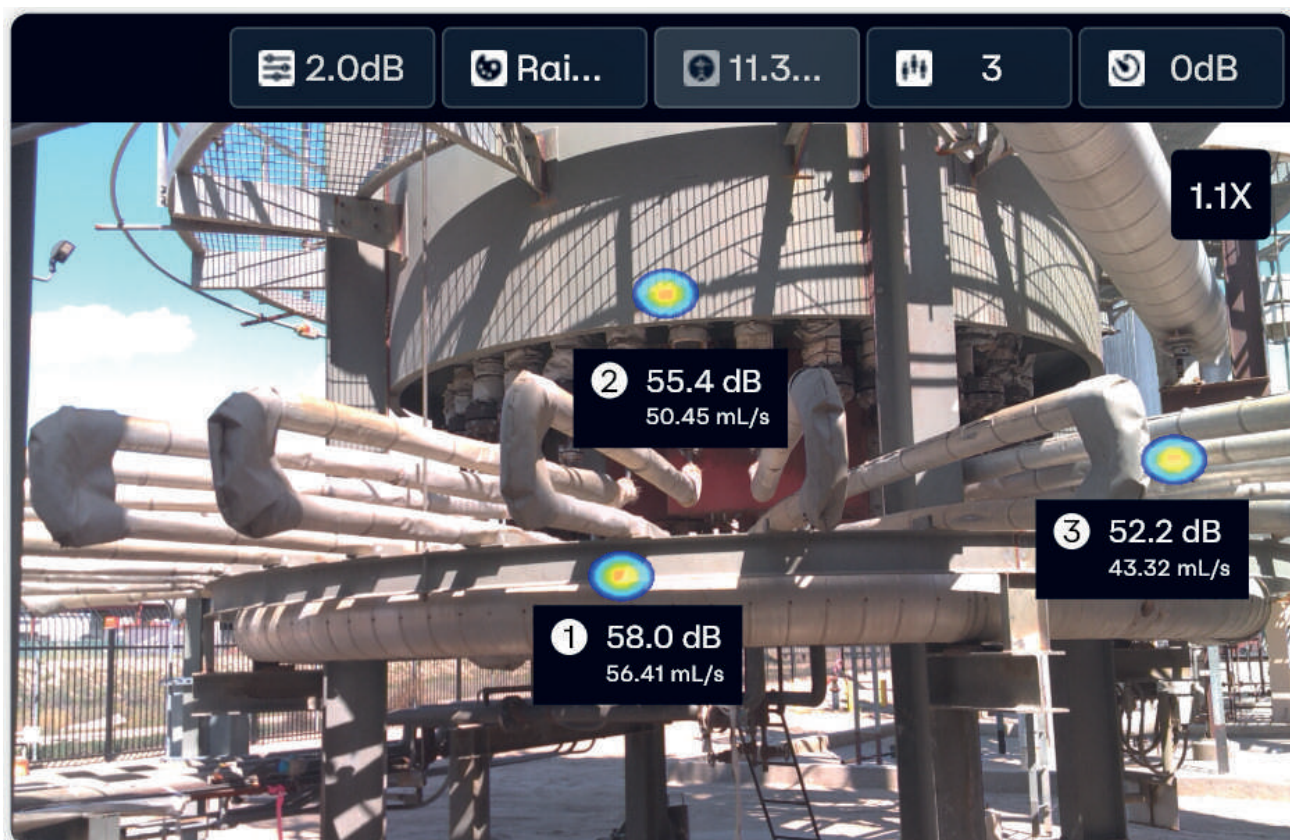
## 4.8 Results analysis



The results of the testing can be analysed and reported using this window.

- **Severity:** Displays the severity level, taken from the MPAC Files>Label>Severity. This field is editable, and the severity level can be added or changed.
- **Fault analysis:** Text field to add notes or analysis of the fault.
- **Fault action:** Text field to add notes or actions to resolve the issue(s).
- **Repair?:** A Yes/No field to add whether a repair is required.
- **Repair priority:** Field to assign a priority to the repair from Low, Medium or High.
- **Repair suggestions:** Text field to add any suggestions for the repair.
- **Text notes:** Text field to add any more relevant information to the test.

## 4.9 Reanalysing image

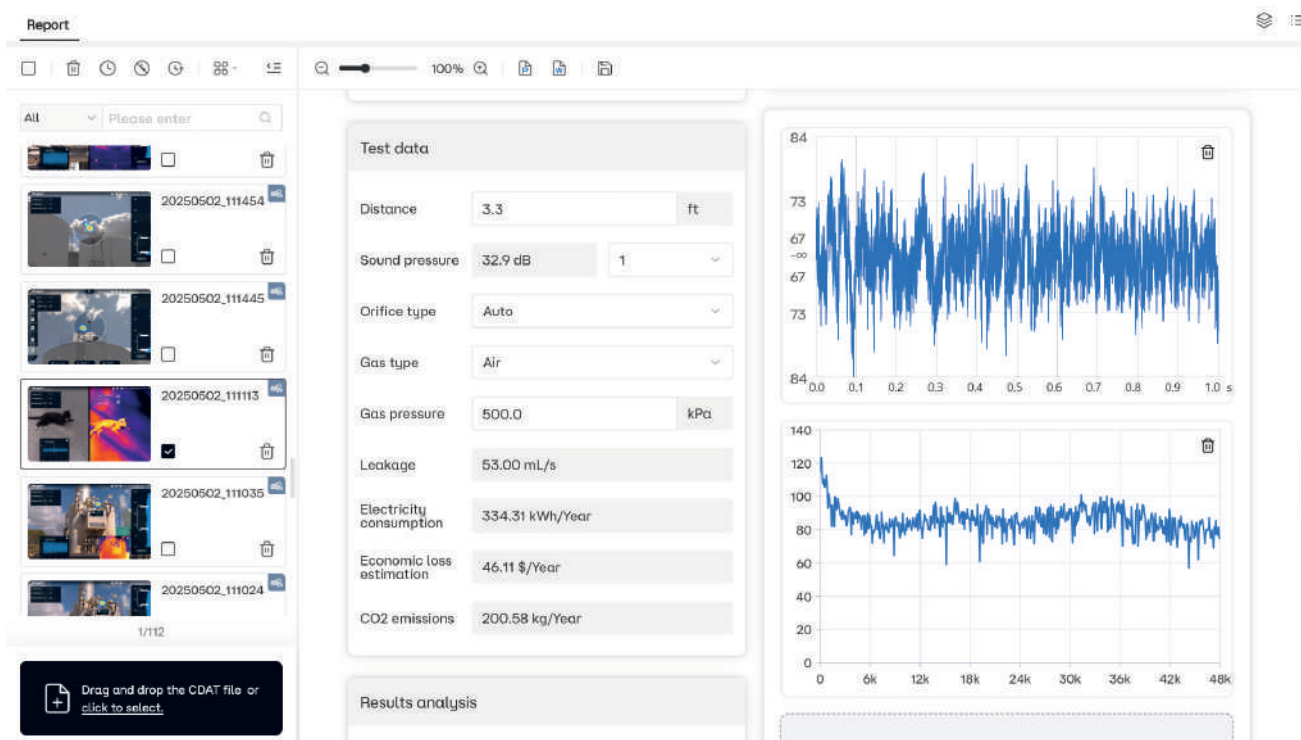


After importing the file, the different aspects of the file can be edited.

- **Dynamic range:** The dynamic range can be reset if required (can only be reset on MPAC208 series).
- **Colour palette:** The colour palette can be changed if required (only available for the MPAC208 series).
- **Frequency range:** The frequency range cannot be edited.
- **Number of imaging points:** The number of the imaging points can be increased or decreased depending on the reporting requirements (only available for the MPAC208 series).
- **Imaging threshold:** The imaging threshold can be changed to display only the points with sound levels above the threshold (only available for the MPAC208 series).



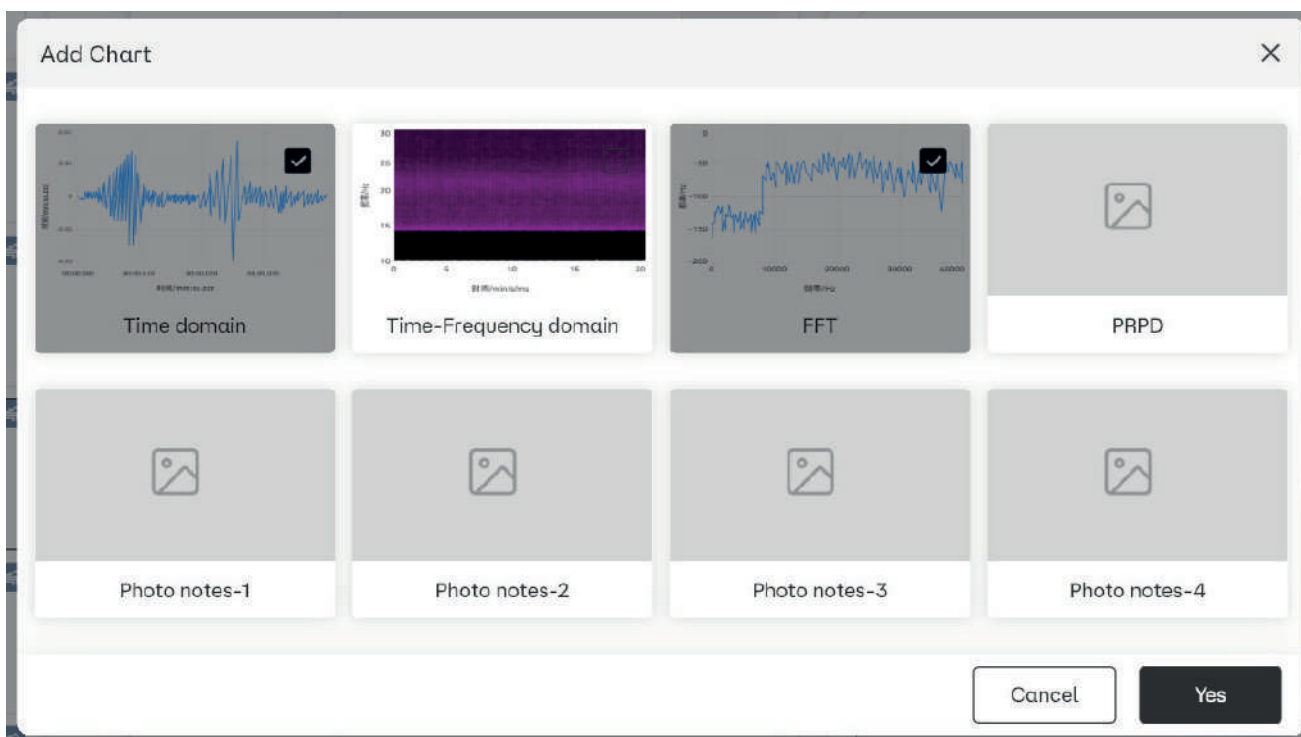
## 4.10 Charts



The software displays different charts that are helpful for further analysis of the test points. Click on **Add Chart** to add or remove the chart(s) based on the reporting requirements.

Up to three charts can be added with an image/video file.

Click on  at the top right of the chart to delete it.



Depending on which MPAC model was used, various charts can be added to support the test data like the Time domain, Time-Frequency domain, FFT or PRPD chart as well as Photo tags if any were added during test.

## 5. Thermal file analysis (MPAC208 series only)

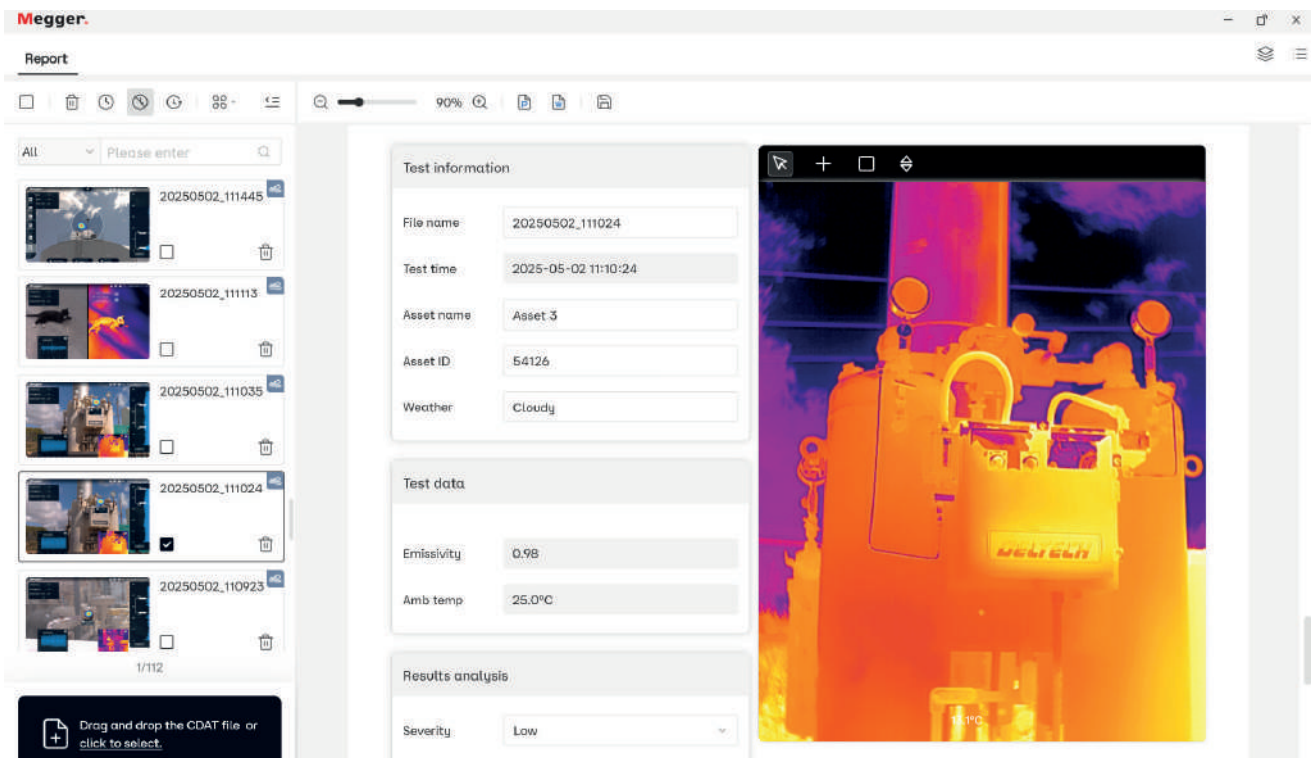
When using the thermal module (**TM384 or TM640**) with the MPAC208 series, the image/video file records the thermal data, which can then be further analysed in the Analysis software.

### 5.1 Test information

This window shows the overview information of the test **See chapter 4.6 Test information on page 19.**

### 5.2 Test data

This window displays the Emissivity and Ambient temperature value as recorded by the operator during the test.



### 5.3 Thermal image/video


Click on + and then on the relevant space in the thermal file to add a **temperature measurement spot point** to the file.

Click on the point that has just been added, then drag it to change its position.

To delete the measurement point, click on it, and press the Delete button on your keyboard.



## Thermal file analysis (MPAC208 series only)


To mark an area and display the **highest and lowest temperature points** within the area, click on  and then click and drag to select the area in the thermal screen.

The size of the area can be adjusted by clicking and dragging the boundaries as required.

Click on the **added area** and drag it to change its position.

To delete the area, click on it and press the Delete button on your keyboard.



Click on  to display the highest and lowest temperature on the screen. Click on it again to hide the temperatures.



## 5.4 Results analysis

The results of the testing can be analysed and reported using this window. **See chapter 4.8 Results analysis on page 20.**

## 5.5 Temperature analysis

Click on the dropdown menu to choose the value from the temperature measurement points added. **See chapter 5.3 Thermal image/video on page 23.**

**Temp rise** column shows the difference between the first two temperature columns.

To manually add a temperature value, double-click on the dropdown field to view a text box.

Notes can be used to add any relevant information regarding the temperature values.



## 6. Worldwide Sales Offices

Sales Office	Telephone	Email
UK	+44 (0)1 304 502101	UKsales@megger.com
USA – Dallas	+1 214 333 3201	USAsales@megger.com
USA – Valley Forge	+1 214 333 3201	USAsales@megger.com
USA – Dallas	+1 214 333 3201	USAsales@megger.com
DEUTSCHLAND – Aachen	+49 (0) 241 91380 500	info@megger.de
SVERIGE	+46 08 510 195 00	seinfo@megger.com
AUSTRALIA	+61 2 9397 5900	<a href="mailto:ausales@megger.com">ausales@megger.com</a>
中国	+86 512 6556 7262	meggerchina@megger.com
中国 - 香港	+852 26189964	meggerchina@megger.com
ČESKÁ REPUBLIKA	+420 222 520 508	info.cz@megger.com
AMÉRICA LATINA	+1 214 330 3293	csasales@megger.com
ESPAÑA	+34 916 16 54 96	info.es@megger.com
SUOMI	+358 08 510 195 00	seinfo@megger.com
FRANCE	+33 1 30 16 08 90	infos@megger.com
ΕΛΛΑΔΑ	+49 (0) 9544 68 0	sales@sebakmt.com
MAGYARORSZÁG	+36 1 214-2512	info@megger.hu
ITALIA	+49 (0) 9544 68 0	sales@sebakmt.com
日本	+44 (0)1 304 502101	UKsales@megger.com
한국	+1-800-723-2861	sales@megger.com
العربية الرياض	+966 55 111 6836	MEsales@megger.com
مملكة البحرين	+973 17440620	MEsales@megger.com
NEDERLAND	+46 08 510 195 00	seinfo@megger.com
NORGE	+46 08 510 195 00	seinfo@megger.com
POLSKA	+48 22 2809 808	info.pl@megger.com
PORTUGAL	+34 916 16 54 96	info.es@megger.com
ROMÂNIA	+40 21 2309138	info.ro@megger.com
РОССИЯ	+7 495 2 34 91 61	sebaso@sebaspectrum.ru
SLOVENSKO	+421 2 554 23 958	info.sk@megger.com
SOUTH AFRICA	+27 (031) 576 0360	sales.rsa@megger.com
TÜRKIYE	+46 08 510 195 00	seinfo@megger.com

## Local Sales office

---

Megger Limited  
Archcliffe Road  
Dover  
Kent  
CT17 9EN  
ENGLAND  
T. +44 (0)1 304 502101  
F. +44 (0)1 304 207342

## Manufacturing sites

---

**Megger Limited**  
Dover, ENGLAND  
T. +44 (0)1 304 502101  
E. [uksales@megger.com](mailto:uksales@megger.com)

**Megger AB**  
Danderyd, SWEDEN  
T. +46 08 510 195 00  
E. [seinfo@megger.com](mailto:seinfo@megger.com)

**Megger Valley Forge**  
Phoenixville, PA USA  
T. +1 610 676 8500  
E. [USAsales@megger.com](mailto:USAsales@megger.com)

**Megger USA - Dallas**  
Dallas, TX USA  
T. +1 214 333 3201  
E. [USAsales@megger.com](mailto:USAsales@megger.com)

**Megger USA - Fort Collins**  
Fort Collins, CO USA  
T. +1 970 282 1200

**Megger GmbH**  
Aachen, GERMANY  
T. +49 (0) 241 91380 500  
E. [info@megger.de](mailto:info@megger.de)

**Megger Germany GmbH**  
Baunach, GERMANY  
T. +49 (0) 9544 68 - 0  
E. [baunach@megger.com](mailto:baunach@megger.com)

**Megger Germany GmbH**  
Radeburg, GERMANY  
T. +49 (0) 35208 84-0  
E. [radeburg@megger.com](mailto:radeburg@megger.com)

The company reserves the right to change the specification or design without prior notice.

Megger is a registered trademark

The Bluetooth® word mark and logos are registered trademarks owned by Bluetooth SIG, Inc., and are used under licence.