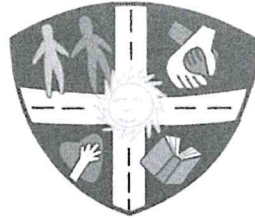


Fourlanesend C.P. School



Providers of 'Good' education since 2007



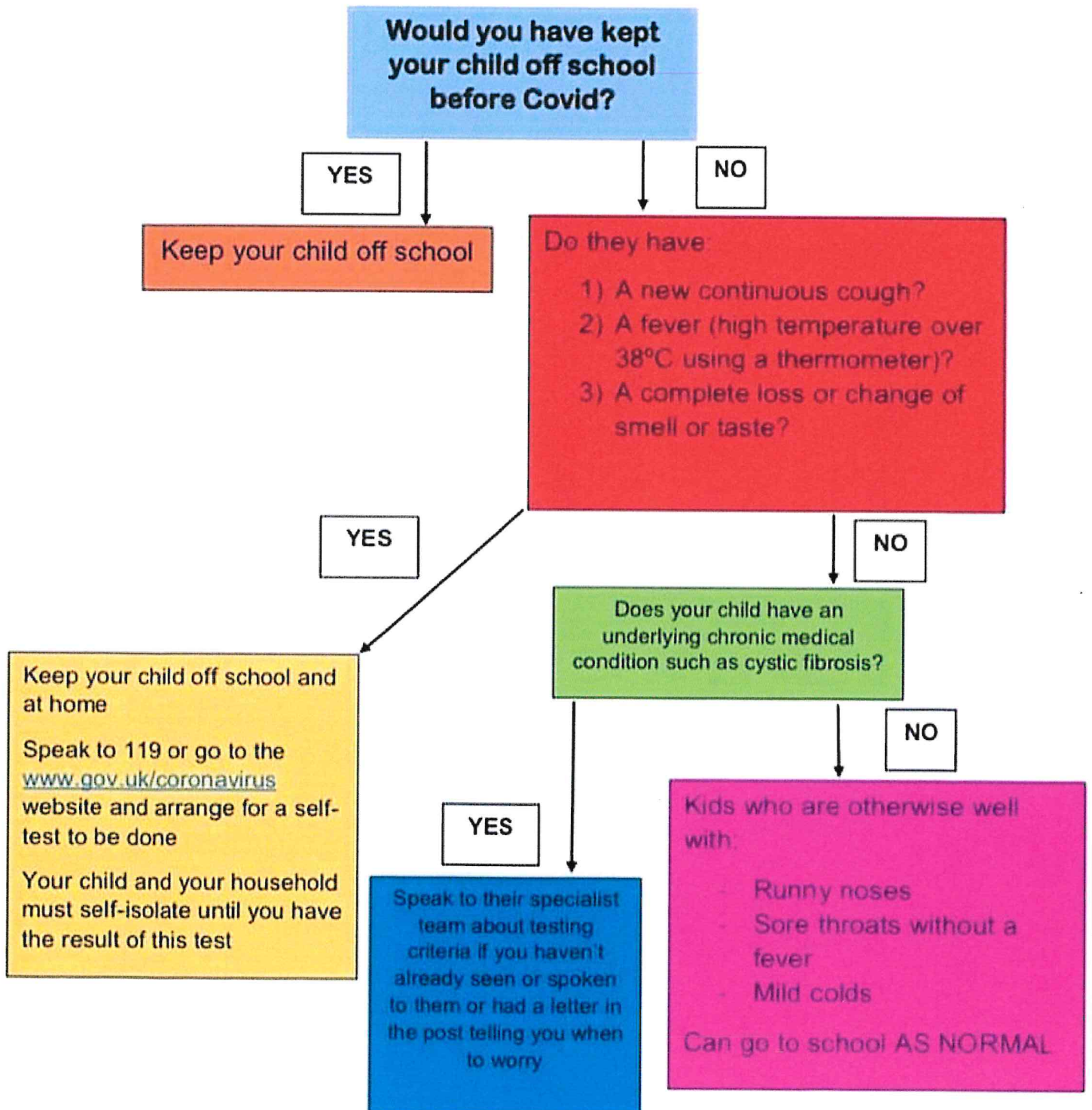
Values for Life

Head Teacher: Mrs Rebecca Norton
Email: head@fourlanesend.cornwall.sch.uk
Website: www.fourlanesendprimary.co.uk
Cawsand, Torpoint Cornwall PL10 1LR
Tel: 01752 822502

15th September 2020

Dear Parents and Carers

Covid related pupil absence - Please keep this in a safe place:



Covid-19 related pupil absence

A quick reference guide for parents and staff (September 2020)

What to do if...	Action Needed	Return to school when...
...my child has Covid-19 symptoms.	<ul style="list-style-type: none"> - Do not come to school - Contact school to inform us - Self-isolate the whole household - Get a test - Inform the school immediately about the test result 	...the test comes back negative or a period of 10 days has passed since the symptoms started, and the child feels well.
...my child tests positive for Covid-19.	<ul style="list-style-type: none"> - Do not come to school. - Contact school to inform us. - Agree an earliest date for possible return (minimum of 10 days). - Self-isolate the whole household. 	...10 days have passed since symptoms began, even if they still have a cough or loss of taste/smell. <i>(These symptoms can last for several weeks.)</i> AND the child feels well.
...my child tests negative.	<ul style="list-style-type: none"> - Contact school to inform us. - Discuss when your child can come back (same day/next day). 	...the test comes back negative.
...my child is ill with symptoms not linked to Covid-19.	<ul style="list-style-type: none"> - Do not come to school. - Contact school to inform us. - Ring on each day of illness. 	...after 48 hours following the last bout of sickness or diarrhoea (as per attendance policy)
...someone in my household has Covid-19 symptoms.	<ul style="list-style-type: none"> - Do not come to school. - Contact school to inform us. - Self-isolate the whole household. - Symptomatic household member to get a test. - Inform school immediately about test result. 	...the test comes back negative.
...someone in my household tests positive for Covid-19.	<ul style="list-style-type: none"> - Do not come to school. - Contact school to inform us. - Agree an earliest date for possible return (minimum of 14 days). - Self-isolate the whole household. 	...the child has completed 14 days of isolation.
...NHS test and trace has identified my child as a close contact of somebody with symptoms or confirmed Covid-19.	<ul style="list-style-type: none"> - Do not come to school. - Contact school to inform us. - Agree an earliest date for possible return (minimum of 14 days). 	...the child has completed 14 days of isolation.
...NHS test and trace has identified a household member (other than my child) as a close contact of somebody with symptoms or confirmed Covid-19.	<ul style="list-style-type: none"> - The household member must self-isolate for 14 days. - Child can continue to attend school. 	...child can continue to attend school
... a sibling attending another school has been sent home to self-isolate due to there being a positive case in their school.	<ul style="list-style-type: none"> - Sibling at other school must self-isolate for 14 days. 	...child can continue to attend school
... my child has travelled abroad from a country or territory that is NOT on the exempt list of countries.	<p>If returning from a destination where quarantine is needed*:</p> <ul style="list-style-type: none"> - minimum of 14 days self-isolation for all those who travelled. - contact school to inform us you are back in the country and we will agree an earliest date for possible return to school. - Self-isolate the whole household. <p><small>*Foreign, Commonwealth & Development Office (FCDO) – for up to date travel information</small></p>	...the quarantine period of 14 days has been completed.

<p>... my child has travelled abroad from a country or territory that IS on the exempt list of countries.</p>	<p>If returning from a destination where quarantine is NOT needed:</p> <ul style="list-style-type: none"> - Check the current UK government exempt territories list to confirm the country you have travelled from or through is on the exempt list. - Ring school to inform us you have returned to the UK and agree a return date to school. 	<p>... you have informed the office of your return to the UK (<i>the office will ask you a few questions about your travel</i>).</p>
<p>...I have travelled from a country that requires us to quarantine (but my child didn't travel).</p>	<ul style="list-style-type: none"> - As long as you do not have / have not had symptoms in the last 14 days, your child can continue to attend school. - The person who has travelled MUST NOT leave the house, including to do pick-ups and drop offs (<i>please contact school if you need support getting your child to school</i>). 	<p>...child can continue to attend school</p>
<p>...we have received medical advice that my child must resume shielding.</p>	<ul style="list-style-type: none"> - Do not come to school. - Contact school to inform us. - Shield until you are informed that restrictions are lifted and shielding is paused again. 	<p>...school inform you that restrictions have been lifted and your child can return to school again. ...you receive medical advice that your child may return to school.</p>
<p>...my child's bubble is closed due to a Covid-19 outbreak in school.</p>	<ul style="list-style-type: none"> - Child must not come to school. - Support your child at home with remote education provided by your school. - Your child will need to self-isolate for 14 days. - Other siblings may continue to attend school. 	<p>...school inform you that the bubble will be reopened.</p>
<p>... I am unable to get a test for someone in the household who has symptoms</p>	<p><i>If you are not able to get a test in the first 5 days of having symptoms, your child and anyone they live with must stay at home and self-isolate for 14 days. Anyone in your support bubble must also stay at home.</i></p>	<p>...the child has completed 14 days of isolation.</p>

<p>... my child has travelled abroad from a country or territory that IS on the exempt list of countries.</p>	<p>If returning from a destination where quarantine is NOT needed:</p> <ul style="list-style-type: none"> - Check the current GOV.UK Travel Advice to confirm the country you have travelled from or through is on the exempt list. - Ring school to inform us you have returned to the UK and agree a return date to school. 	<p>... you have informed the office of your return to the UK (<i>the office will ask you a few questions about your travel</i>).</p>
<p>...I have travelled from a country that requires us to quarantine (but my child didn't travel).</p>	<ul style="list-style-type: none"> - As long as you do not have / have not had symptoms in the last 14 days, your child can continue to attend school. - The person who has travelled MUST NOT leave the house, including to do pick-ups and drop offs (<i>please contact school if you need support getting your child to school</i>). 	<p>...child can continue to attend school</p>
<p>...we have received medical advice that my child must resume shielding.</p>	<ul style="list-style-type: none"> - Do not come to school. - Contact school to inform us. - Shield until you are informed that restrictions are lifted and shielding is paused again. 	<p>...school inform you that restrictions have been lifted and your child can return to school again. ...you receive medical advice that your child may return to school.</p>
<p>...my child's bubble is closed due to a Covid-19 outbreak in school.</p>	<ul style="list-style-type: none"> - Child must not come to school. - Support your child at home with remote education provided by your school. - Your child will need to self-isolate for 14 days. - Other siblings may continue to attend school. 	<p>...school inform you that the bubble will be reopened.</p>
<p>... I am unable to get a test for someone in the household who has symptoms</p>	<p><i>If you are not able to get a test in the first 5 days of having symptoms, your child and anyone they live with must stay at home and self-isolate for 14 days. Anyone in your support bubble must also stay at home.</i></p>	<p>...the child has completed 14 days of isolation.</p>