

Operation Encompass

Supporting Children Exposed to Domestic Abuse



CORNWALL GOES LIVE

We have now briefed over 300 Heads and DSLs in Cornwall ready for the launch of Operation Encompass on 30th October 2017. The sessions have all been very well received and we were heartened by the positive and supportive comments made by many of you after the briefings.

We will keep in touch with you through the email address that you gave us on the Key Adult Information sheets as we are hoping to provide a range of supportive activities during the coming year.

During the timescale that we were leading the briefing sessions there were some important reports which would like to draw your attention to:



The multi-agency response to children living with domestic abuse

Prevent, protect and repair

Following the publication of 'The Multi-Agency Response to Children Living with Domestic Abuse', Bradley Simmons, South West Regional Director for Ofsted, spoke in support of Operation Encompass on BBC Radio.

One of the areas in which an inspection took place was running Operation Encompass. The report highlights the positive part that Operation Encompass can play in supporting children exposed to Domestic Abuse

It is now abundantly clear from research that living with domestic abuse is always harmful to children, and it is rightly seen as a form of child maltreatment in its own right.

(Humphreys and Bradbury-Jones, 2015)



National Child Protection Inspections

Cleveland Police
8 – 19 May 2017

September 2017
© HMICFRS 2017
ISBN: 978-1-78655-432-1
www.justicespectator.gov.uk/HMICS

Inspection Cleveland Police

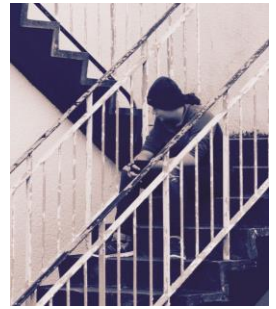
“Operation Encompass is established practice within the force and has led to more timely and effective management of domestic abuse notifications from the force to the schools of affected.”



ACELens®

As part of the briefings I brought to your attention the importance of understanding Adverse Childhood Experiences (ACEs) and quoted some of the recent research about ACEs, especially the relevance of a child's exposure to Domestic Abuse to scoring 4 or more ACEs (86%).

Remember: Safe, secure, nurturing relationships and environments (SSNRE) trump adversity every time.

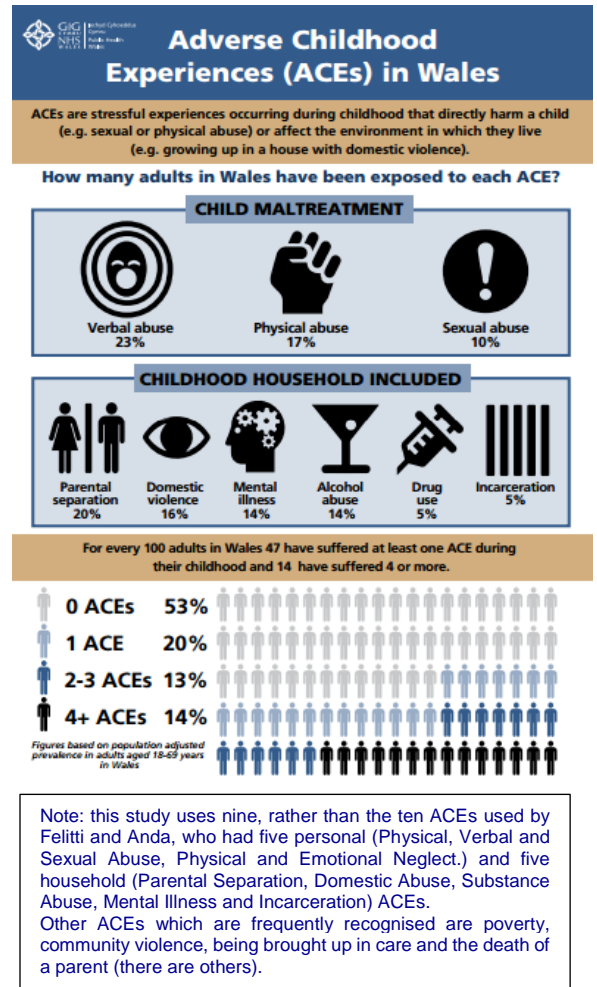


ACELens® reflects the fact that Torpoint Nursery and Infant School is trauma informed and trauma sensitive.

This means that we look at each child through the lens of our understanding of ACEs - theirs and their parents' – and how best we can use this knowledge to support each child thus enabling them to make the very best of the whole experience on offer to them.

Understanding ACEs allows schools to support the child and mitigate against the known long term effects upon physical and emotional wellbeing, low life potential, the taking part in risky behaviours and early death.

The work of Felitti and Anda was initially taken on board by health organisations across the world, as well as by American schools. In the last few years schools in the United Kingdom have begun to think about ACEs, as have Police Forces across our country. The latest study in the UK was undertaken by Wales. (see opposite infographic)



Change **“What’s wrong with you?”** to **“What’s happened to you?”**



For many adult victims, the leaving process is made far more difficult or even impossible because they have no one to look after loved family pets. It was announced on 11th October 2017 that Refuge4pets has been created to work across Devon and Cornwall. <http://refuge4pets.org.uk>