



## CHILD PROTECTION & SAFEGUARDING CHILDREN POLICY

### Contents:

- **1.0 Overview**
- **2.0 Introduction**
- **3.0 Framework and Legislation**
- **4.0 Overview of main elements**
- **5.0 Roles and Responsibilities**
  - 5.1 All Staff**
  - 5.2 Designated Safeguarding Leads**
  - 5.3 Governing Body**
- **6.0 Safe schools and safe staff**
- **7.0 Information for Parents**
- **8.0 Actions where there are concerns about a child**
- **9.0 Links to other policies and legislation**
- **10.0 Monitoring and review**

### 1.0 - Overview

Wilton Primary School's whole-school Child Protection Policy aims to provide clear direction to staff and others about expected codes of behaviour in dealing with child welfare concerns. The policy also aims to make explicit the school's commitment to the development of good practice and sound procedures to keep children safe in our school.

The purpose of the policy is, therefore, to ensure that our children's welfare is of paramount importance, early and additional help is offered to prevent escalation and where child protection concerns are identified referrals are handled sensitively, professionally and in ways that support the needs of the child's well-being.

Governors and staff are committed within Wilton Primary School to safeguarding and promoting the welfare of children in our care through all our policies, procedures and practices. We expect all our pupils' parents and visitors to share this commitment and understanding.

### 2.0 - Introduction

In our school we respect our children within an atmosphere that encourages all children to do their best. We provide opportunities that enable our children to take and make decisions for themselves. Our teaching of personal, social, health and citizenship education, as part of the National Curriculum, helps to develop appropriate attitudes in our children, and makes them aware of the impact of their decisions on others. We also teach them how to recognise different risks in different situations, and how to behave in response to them.

Therefore, Wilton Primary School will endeavour to support all its pupils through:

- The curriculum which encourages the promotion of self-esteem, self-motivation, self-protection.
- The school ethos, which promotes a positive, supportive and secure environment and which gives all pupils and adults a sense of being respected and valued.
- Approaches which allow children and young people to develop critical thinking, literacy skills and digital literacy skills.



- A curriculum which explores human rights, equality, democracy and tolerance and prepares children and young people fully for life in modern Britain.
- A coherent management of behaviour and discipline policy & procedures inclusive of the use of reasonable force.
- Liaison with other professionals and agencies who support children and parents.
- A commitment to develop productive, supportive relationships with parents whenever it is in the child's interest to do so.
- The development and support of a responsive and knowledgeable staff group whose role it is to respond appropriately in all safeguarding situations.

### **3.0 – Framework and Legislation**

No Schools operate in isolation. Keeping children safe from significant harm is the responsibility of all adults especially those working with children. The development of appropriate procedures and the monitoring of good practice are the responsibilities of Redcar and Cleveland Local Safeguarding Children Board, which includes the partnership of several agencies who work with children and families across the Borough.

Wilton Primary School is committed to respond in accordance with Child Protection: Tees Local Safeguarding Children Board procedures <http://www.teescpp.org.uk> and partner agencies in all cases where there is a concern about significant harm.

Significant Harm is defined in The Children's Act 1989 as the ill-treatment (including sexual abuse and physical abuse) or the impairment of health (physical or mental) or development (physical, intellectual, emotional, social or behavioural) as compared to a similar child.

Note: harm now includes the impairment of a child's health or development as a result of witnessing the ill treatment of another person. (*Adoption and Children Act 2002*)

Local Authorities have a duty to investigate (under S47 of the Children Act 1989). Where a Local Authority is informed that there is a child who is living, or is found, in their area and they have reasonable cause to suspect that child is suffering or is likely to suffer significant harm they must make such enquiries as necessary to promote or safeguard the child's welfare. The First Contact Team undertakes this responsibility on behalf of the Local Authority once a referral has been made.

Keeping Children Safe in Education September 2016 contains information on what schools and do and sets out the legal duties with which schools must comply. It should be read alongside Working Together to Safeguard Children 2015 which applies to all the schools, including maintained nursery schools. The Children Act 1989 sets out the Legal Framework.

Safeguarding and promoting the welfare of children is defined for the purposes of this policy as: protecting ALL children from maltreatment and abuse; (including in addition to the four categories of harm, issues such as child sexual exploitation (CSE), Honour based violence (HBV) inclusive of Female Genital Mutilation (FGM) and Forced Marriage, preventing radicalisation and extremism, harassment, bullying and victimisation) preventing impairment of children's health or development; ensuring that children grow up in circumstances consistent with the provision of safe and effective care; and taking action to enable all children to have the best outcomes. This includes everyone under the age of 18.

### **4.0 - Overview of main elements**

We recognise that abuse and neglect can result in underachievement. We strive to ensure that all our children make good educational progress. Wilton Primary School recognises that, statistically, children with behavioural difficulties and disabilities are the most vulnerable to abuse. School staff who work, in any capacity, with children with profound and multiple disabilities, sensory impairment and/or emotional and behavioural problems will need to be particularly sensitive to signs of abuse. School staff must give



consideration to children who are subject to a statement of special needs, an education health and care plan or have a medical condition, as these can mask safeguarding issues and must not be dismissed.

Child abuse can take a variety of forms:

- **Physical abuse** involves hitting, slapping, kicking, misuse of medication, undue restraint, shaking or other treatment of a child that can cause actual bodily harm.
- **Sexual abuse** involving forcing or enticing a child into sexual activities whether or not the child is aware of what is happening. This includes non-contact situations such as viewing child abuse images.
- **Emotional abuse** involves persistent emotional ill treatment of children, such as frightening them, or putting them in situations of danger. It is also an abuse to convey to children the feeling they are worthless or unloved.
- **Neglect** and acts of omission is also a form of abuse. This could involve failure to provide an adequate level of care (e.g. food, warmth and failure to access medical care or services)

Wilton Primary School fully recognises the contribution it can make to keeping children safe and supporting the pupils in its care. There are four main elements to the child protection policy:

#### 1. Prevention through:

- positive school atmosphere
- careful and vigilant teaching
- pastoral care
- support to pupils
- providing good adult role models
- the identification of early and additional support/services to children and families (Early Help)
- and recognising and reducing risks to children including harassment, bullying, victimisation, exploitation, radicalisation and issues such as Honour Based Violence Female Genital Mutilation and Forced Marriage.

#### 2. Protection through:

- following agreed procedures
- ensuring all staff respond appropriately and sensitively to child protection concerns and that every member of staff has regular training and updates at least annually and are supported to refer their concerns to one of the Designated Safeguarding Leads.
- Ensure that if necessary in certain specific cases such as Female Genital Mutilation (Mandatory reporting of FGM from October 2015), Radicalisation or Forced Marriage there are SPOCS/named teams and individuals within the police who can be contacted.

#### 3. Reconsideration

- following and challenging the progress of new referrals and existing cases to ensure that individual cases are reconsidered if there remains no improvement to a child's circumstances.

#### 4. Support

- pupils and school staff and to children who may be vulnerable due to their individual circumstances.

All Staff have a responsibility to recognise child abuse, neglect and peer on peer abuse in its many forms. Additional guidance on how our school supports the following areas of need, additional need or harm are either hyperlinked to the areas identified below from Keeping Children Safe in education, 2016 or a named school policy these must be read in conjunction with our Child Protection Policy.

The areas include:

- [Bullying including cyberbullying](#)
- [Children missing education](#) Keeping Children Safe 2016 (Annex A)
- [Children missing Home or care](#)
- [Child sexual exploitation – \(CSE\)](#) & Keeping Children Safe 2016 (Annex A)
- [Domestic Violence](#)
- [Drugs](#)
- [Fabricated or induced Illness](#)
- [Faith Abuse](#)
- [Female genital mutilation \(FGM\)](#) Keeping Children Safe 2016 (Annex A)



- Forced Marriage – Keeping Children Safe 2016 (Annex A)
- Gangs and youth violence
- Gender Based Violence/violence against Women and Girls (VAWG)
- Hate
- Mental Health
- Missing children and adult strategy
- Private fostering
- Preventing radicalisation Keeping Children Safe 2016 (Annex A)
- Relationship abuse
- Sexting new guidance from DfE
- Trafficking
- Peer on Peer Abuse

In the event of any of these issues being recognised, information should be shared directly with the Designated Safeguarding Lead, which will result in the situation being recorded, evaluated and support offered in school or the pupil/s being referred to specific services.

This policy applies to Wilton Primary School's whole workforce.

## **5.0 – Roles and responsibilities**

### **5.1 - For All Staff**

Everyone who comes into contact with children and their families has a role to play in safeguarding children. Due to the regular contact with children all staff at Wilton Primary have, we hold a particularly important role in safeguarding as we are in a position to identify concerns early, provide help for children and to prevent concerns from escalating. Children can make disclosures or show signs of abuse at any time and to any individual and safeguarding incidents can occur within schools. Therefore, it is important that ALL staff:

- Ensure that they listen to and reflect on the voice of the child at ALL times and take seriously any concerns raised to them by a child.
- Ensure that they report ANY concerns of harm to any child to the Designated Safeguarding Lead immediately. (However, ALL staff can refer their concerns directly to The First Contact Team if necessary and the police in the stated incidents above. They should inform the Designated Safeguarding Lead as soon as possible if they have reported concerns directly).
- Ensure that they immediately share with the Designated Safeguarding Lead information shared with them by a child or directly observed/witnessed and record it. This could include sharing information on behalf of the Designated Safeguarding Lead with other agencies. All discussions decisions and reasons for them should be recorded in writing adhering to Wilton Primary School's Recording and Information Sharing Policy/Procedure.
- Ensure that they maintain an attitude of 'it could happen here' and report any concerns regarding the behaviour of a child /an adult/staff member in school directly to the Designated Safeguarding Lead/Headteacher.
- Ensure that they feel able to raise concerns about poor or unsafe practices of staff and potential failures in the school's safeguarding regime through whistleblowing procedures and the staff behaviour/code of conduct policy.
- Ensure that they attend regular formal training/updates at least annually to support them in recognising the signs and symptoms of abuse, particularly in support of early identification of needs of children to prevent an escalation of need or risk to the child.
- Ensure that under the Counter Terrorism and Security Act, April 2015 that the school has 'due regard to Prevent' and to assess risk of children and young people being radicalised drawn into extremism (based upon potential risks in local area and that clear protocols are in place for all visitors so that their views are appropriate and not an opportunity to influence others).
- Ensure that there is mandatory reporting to the police in all cases where teachers discover that an act of FGM appears to have been carried out.



- Ensure that staff understand through online safety training the additional risks for pupils online and continue to promote the School's Online Safety Policy in the protection of all pupils. It is clear in the online safety policy, the expectations of pupils regarding their own devices whilst on school site and the consequences of any evidence of inappropriate use of the internet.
- Ensure that they remain vigilant whilst visitors are on site and continue to promote the school's commitment to keeping children safe through reminding visitors and parents of the school's appropriate use of personal mobile phones/devices whilst they are on school premises. This includes staff understanding and adhering to the Staff Behaviour Policy inclusive of use of mobile phones and electronic devices.

Wilton Primary will work with social care, the police, health services and other services to promote the welfare of children and protect them from harm.

## **5.2 - Designated Safeguarding Leads**

Wilton Primary has appointed the Headteacher, Mrs Hill, to be our Designated Safeguarding Lead (DSL). This person has the overall responsibility for safeguarding and child protection and has the appropriate authority and training to undertake such a role and is able to provide advice and support to other staff on child welfare and child protection matters. This person is able to take part in strategy discussions and inter agency meetings and to support other trained staff to do so as well as contribute to the assessment of children.

Wilton Primary has also appointed the following Deputy Designated Safeguarding Leads (DDSL), Mrs Johnson, Mrs Barron and Mrs Gainford. The DDSLs are trained to the same standard as the DSL. Whilst the activities of the Designated Safeguarding Lead can be delegated to appropriately trained deputies the ultimate lead responsibility for child protection will not be delegated and remains with the Designated Safeguarding Lead.

However, if there is an IMMEDIATE safeguarding concern and the Designated Safeguarding Leads are unavailable please seek immediate support via The First Contact Team (01642 771500)

## **Role of the Designated Safeguarding Lead**

The broad areas of responsibility for the Designated Safeguarding Leads are identified as:

### **Manage Referrals**

- Refer cases of suspected abuse to The First Contact Team.
- Refer cases to the Disclosure and Barring Service (cases where a person is dismissed or left due to risk/harm to a child); and/or
- Refer to the Police (cases where a crime may have been committed including Sexual Exploitation (Missing and Exploited lead), Radicalisation (through the Single Point of Contact for the Channel Panel) Female Genital Mutilation and Forced Marriage)
- Support staff who make referrals to The First Contact Team, Channel Panel or Police as appropriate

### **Work with others**

- Act as a source of support, advice and expertise to staff on matters of safety and safeguarding and when deciding whether to make a referral by liaising with relevant agencies.
- As an Operation Encompass partner we work closely with Carl Everett OE Lead with regards to domestic violence (DV) incidents and offer wellbeing checks to our pupils if we are contacted following an incident which has occurred in one of our pupils homes.

### **Undertake Training**

The Designated Safeguarding Lead and any deputies will receive appropriate training updated every two years. They should undertake prevent awareness raising and in addition to the formal training their knowledge and skills should be refreshed at regular intervals but at least annually so they:

- Understand and keep up with any developments to their role
- Understand the assessment process for providing early help and intervention.
- Have a working knowledge of how local authorities conduct a child protection case conference and a child protection review conference and be able to attend and contribute to these effectively when required to do so.



- Ensure each member of staff has access to and understands the schools Child Protection Policy and procedures.
- Be alert to the specific needs of children in need, those with special educational needs and young carers.
- Be able to keep detailed, accurate, secure, written records of concerns and referrals.
- Understand and support the school with regards to the requirements of the Prevent duty and be able to provide advice and support to staff on protecting children from the risk of radicalisation.
- Obtain access to resources and attend any relevant or refresher training courses.
- Encourage a culture of listening to children and taking account of their wishes and feelings, among all staff, in any measures the school may put in place to protect them.

### **Raise Awareness**

The designated safeguarding lead should ensure the school or college's policies are known understood and used appropriately:

- Ensure the school Child Protection Policy is reviewed annually and the procedures and implementation are updated and reviewed regularly, and work with governing bodies and the workforce in this regard to ensure its effectiveness. This includes ensuring that all staff receive the policy on their induction.
- Ensure the Child Protection Policy is available on the website and parents are aware of the fact that referrals about suspected abuse or neglect may be made and the role of the school in this.
- Link with the Redcar and Cleveland SCB to make sure staff are aware of training opportunities and the latest local policies on safeguarding.

### **Child Protection Files**

Where children leave the school ensure their child protection file is transferred appropriately for any new school as soon as possible, ensuring secure transit and confirmation of receipt.

### **Availability**

During term time the designated safeguarding lead (or a deputy) should always be available for staff in the school or college to discuss any safeguarding concerns.

The majority of the time, the designated safeguarding lead (or deputy) will be available in person. However, there may be occasions where staff may have to contact a DSL via phone.

The designated safeguarding lead will arrange adequate and appropriate cover arrangements for any out of hours/out of term activities.

*(Taken from Keeping Children Safe in Education, 2016: Annex B)*

### **In addition, as best practice the Designated Safeguarding Leads will:**

- Ensure each member of staff has access to and understands the School's suite of safeguarding policies particularly the Child Protection Policy, the Staff Behaviour/Code of Conduct Policy, the Pupil Behaviour policy and the Anti-Bullying Policy.
- Be aware of all school excursions and residential visits and clarify with educational visit co-ordinator/group leader(s) their role and responsibility in connection with safeguarding/child protection.
- Ensure a whole school policy about managing behaviour and discipline, including the use of reasonable force, is in place.
- Ensure an effective whole school policy against bullying/cyber bullying inclusive of measures to prevent all forms of bullying among pupils, is in place.
- Inform the LA of any pupil who fails to attend school regularly, or has been absent without school's knowledge and permission for a continuous period of 10 days or more.
- Inform LA of any pupil to be deleted from school admission register and follow missing from Education protocols.

## **5.3 - Responsibilities of Governing Body**

At Wilton Primary School the senior lead Governor for safeguarding is Mr Richard Brocklesby-Brown.

The role of this individual is to:

- Ensure that the allocation of funding and resource is sufficient to meet the current safeguarding and child protection activity and challenge the safeguarding activity.



- Ensure the self-assessment tool and Designated Safeguarding Lead Report demonstrates fully and accurately the safeguarding arrangements and any action to progress areas of weakness or development
- Ensure that the governing body receives training to clarify their statutory role in keeping children safe to support their quality assurance of those statutory arrangements.

As the Safeguarding Governor is NOT the Chair of Governors it is important to indicate the role of the Chair in Safeguarding, which is to:

- Ensure that they liaise with the local authority and/or partner agencies on issues of child protection and in the event of allegations of abuse made against the Headteacher, the Principal of a college or proprietor or member of governing body of an independent school.
- Ensure that in the event of allegations of abuse being made against the Headteacher where the Headteacher is also the sole proprietor of an independent school, allegations should be reported directly to the Designated Officer (DO). Therefore ensuring effective whistleblowing procedures are in place.
- Ensure that the appointed member of the Governing Body for Safeguarding holds the Headteacher to account on all matters involving safeguarding through an effective Child Protection Policy that is embedded and followed by the entire workforce in all of the above raised areas.
- Ensure that all staff undergo safeguarding training at induction and that they receive regular updates.
- Ensure that the school has appropriate filtering and monitoring systems in place for online content (inclusive of 3 and 4G).
- Ensure that children are taught about safeguarding through Personal, Social, Health and Economic Education (PSHE) and/or Sex and Relationships Education.
- Ensure that a designated teacher is appointed to promote the educational achievement of looked after children, including working with the Local Authority's virtual school Headteacher and discuss how pupil premium funding for looked after children will be used.

## **6.0 - Safe Schools/Safe Staff**

Governors have agreed and ratified the following policies, procedures, processes or systems which must be read and considered in conjunction with this policy:

### **Whistle Blowing/confidential reporting**

Wilton Primary's Whistle Blowing/Confidential Reporting Policy provides guidance to staff and volunteers on how they can raise concerns and receive appropriate feedback on action taken, when staff have concerns about any adult's behaviour.

### **Complaints / Allegation Management Towards or with a Child or Adult**

A Safeguarding complaint involving a member of staff must be reported to the Headteacher immediately. Where there are concerns about the Headteacher or Principal, this should be referred to the chair of governors, chair of the management committee or proprietor of an independent school as appropriate. In the event of allegations of abuse being made against the Headteacher, where the Headteacher is also the sole proprietor of an independent school, allegations should be reported directly to the designated officer(s) at the local authority. Staff may consider discussing any concerns with the school's designated safeguarding lead and make any referral via them. (KCSIE, 2016: pg 9)

Consultation without delay with the Designated Officer Lorraine Press **Tel: 01642 771531** will determine what action follows. A multi-agency strategy meeting may be arranged to look at the complaint in its widest context, the Headteacher/senior member of school staff must attend this meeting, which will be arranged by the Designated Officer. All issues must be recorded on the allegation management form and the outcome reached must be noted to ensure closure.

<http://www.teescpp.org.uk/allegations-against-staff>

### **Training and Support**

All staff members should be aware of the systems within their school or college which support safeguarding and these should be explained to them as part of their induction into the school to ensure they can



discharge their responsibilities effectively. This includes: The Child Protection Policy; Staff Behaviour Policy (sometimes called a code of conduct); Safer Working Practice Document and the Names of the Designated Safeguarding Lead and their deputies.

All staff members should also receive appropriate safeguarding and child protection training which is regularly updated. The governing body will decide the frequency and content of this CPD. At Wilton our whole school training is held every 2 years. In addition, all staff members receive regular safeguarding and child protection updates via staff meetings and internal CPD as required, but at least annually, to provide them with relevant skills and knowledge to safeguard children effectively and allow them opportunities to contribute to reviewing and shaping the safeguarding arrangements.

### **Professional Confidentiality**

Confidentiality is an issue which needs to be understood by all those working with children, particularly in the context of safeguarding. Wilton Primary recognises that the only purpose of confidentiality in this respect is to benefit the child. (Child Protection Tees Local Safeguarding Children Board procedures <http://www.teescpp.org.uk/>).

### **Record Keeping**

Well-kept records are essential to good safeguarding practice. Wilton Primary is clear about the need to record any concerns, discussions held, decisions made and reasons for those decisions about a child or children within its care. All staff will follow the schools Information Sharing and Recording Policies to ensure recording keeping is compliant.

Safeguarding Recording is held electronically through a secure management system of CPOMS and all staff have received training in the recording expectations and retention. Following a child leaving our school we follow the appropriate transfer procedures and retention guidelines. At Wilton, we started electronic recording from 1<sup>st</sup> September 2016, all recording prior to this is in paper format. Retention guidelines are followed accordingly.

### **Attendance at Safeguarding Conferences**

In the event of Wilton Primary being invited to attend child protection conferences, the Designated Safeguarding Lead or deputies, will represent the school and/or identify the most appropriate trained member of staff to provide information relevant to child protection conference (initial/review).

### **Supporting Children**

Wilton Primary School recognises that children who are abused or who witness violence may find it difficult to develop a sense of self-worth and to view the world in a positive way. Wilton Primary may be the only stable, secure and predictable element in the lives of some of the children in its care. The school, therefore, recognises that such children might exhibit challenging and defiant behaviour and will take careful note of the context of such behaviour.

As an Operation Encompass partner we work closely with the Operation Encompass Lead with regards to domestic violence incidents and offer wellbeing checks to our pupils if we are contacted following an incident which has occurred in one of our pupils homes.

Wilton Primary also recognises that children are capable of abusing their peers. Peer on peer abuse can take many forms and any concerns raised will be investigated and dealt with appropriately. No peer on peer abuse should be tolerated or minimised as part of growing up and all those involved will be provided with an appropriate level of support. It is understood that those pupils who have experienced abuse in their own lives may in turn abuse others. This requires a considered and sensitive approach in order that the child can receive appropriate help and support. See Peer on Peer abuse policy for detailed information.

Wilton Primary School recognises that, statistically, children with behavioural difficulties and disabilities are the most vulnerable to abuse. School staff who work, in any capacity, with children with profound and multiple disabilities, sensory impairment and/or emotional and behavioural problems will need to be





particularly sensitive to signs of abuse. School staff must give consideration to children who are subject to a statement of special needs, an education health and care plan or have a medical condition, as these can mask safeguarding issues and must not be dismissed.

We also recognise that in a home environment where there is domestic violence, drug or alcohol misuse or mental health issues children may also be vulnerable and in need of support and protection.

## **7.0 Information for Parents**

At Wilton Primary, Governors and staff are committed to keeping our children safe and will take any reasonable action to safeguard and promote their welfare. In cases where the school has reason to be concerned that a child maybe suffering significant harm, ill treatment, neglect or other forms of harm, staff have no alternative but to follow Redcar and Cleveland Safeguarding Children Board procedures and inform The First Contact Team or police of their concern.

### **Procedures**

The Designated Safeguarding Lead (or deputy DSL) will be informed immediately by an employee of the school, pupil of the school, parent of the school or other persons, in the following circumstances:

- Suspicion that a child is being harmed
- There is evidence that a child is being harmed

The threshold of significant harm is defined in the Children Act 1989 Section 31 (9) as:

- Ill-treatment
- Impairment of health (as compared to a similar child)

Note: harm now includes the impairment of a child's health or development as a result of witnessing the ill-treatment of another person (Adoption and Children Act 2002).

Working together 2015 defines the categories of harm as:

### **Physical Abuse**

A form of abuse, which may involve hitting, shaking, throwing, poisoning, burning or scalding, drowning, suffocating or otherwise causing physical harm to a child. Physical harm may also be caused when a parent or carer fabricates the symptoms of, or deliberately induces illness in a child.

### **Neglect**

The persistent failure to meet a child's basic physical and/or psychological needs, likely to result in the serious impairment of the child's health or development.

Neglect may occur during pregnancy as a result of maternal substance misuse. Once a child is born, neglect may involve a parent or carer failing to provide adequate food and clothing, shelter including exclusion from home or abandonment, failing to protect a child from physical and emotional harm or danger, failure to ensure adequate supervision including the use of inadequate care-takers, or the failure to ensure access to appropriate medical care or treatment. It may also include neglect of, or unresponsiveness to, a child's basic emotional needs.

### **Sexual Abuse**

Involves forcing or enticing a child or young person to take part in sexual activities, not necessarily involving a high level of violence, whether or not the child is aware of what is happening. The activities may involve physical contact, including assault by penetration (for example, rape or oral sex) or non-penetrative acts such as masturbation, kissing, rubbing and touching outside of clothing. They may also include non-contact activities, such as involving children in looking at, or in the production of, sexual images, watching sexual activities, encouraging children to behave in sexually inappropriate ways, or grooming a child in preparation for abuse (including via the internet). Sexual abuse is not solely perpetrated by adult males. Women can also commit acts of sexual abuse, as can other children.

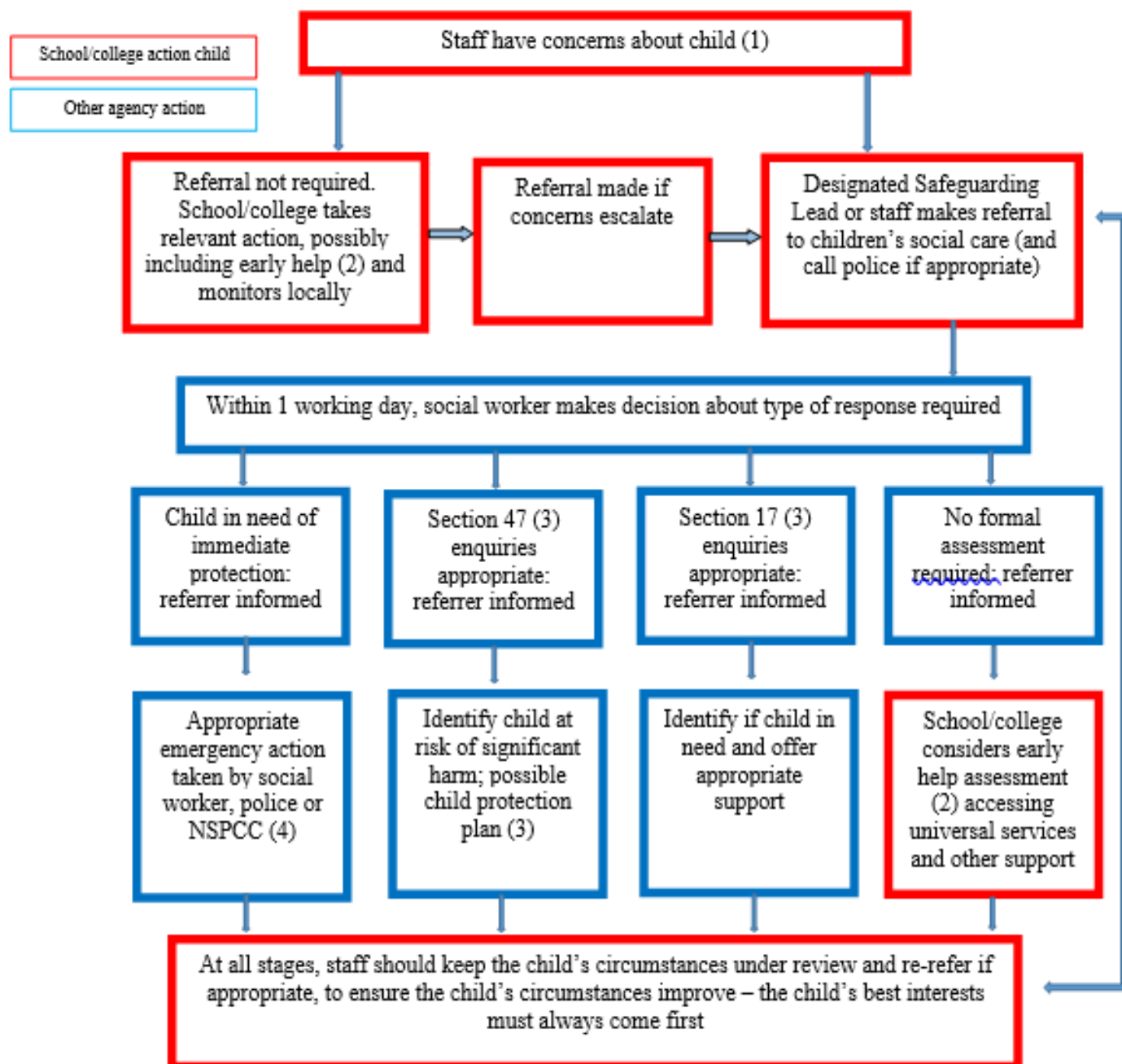
### **Emotional Abuse**



The persistent emotional maltreatment of a child such as to cause severe and persistent adverse effects on the child's emotional development. It may involve conveying to a child that they are worthless or unloved, inadequate, or valued only insofar as they meet the needs of another person. It may include not giving the child opportunities to express their views, deliberately silencing them or 'making fun' of what they say or how they communicate. It may feature age or developmentally inappropriate expectations being imposed on children. These may include interactions that are beyond a child's developmental capability, as well as overprotection and limitation of exploration and learning, or preventing the child participating in normal social interaction. It may involve seeing or hearing the ill-treatment of another. It may involve serious bullying (including cyber bullying), causing children frequently to feel frightened or in danger, or the exploitation or corruption of children. Some level of emotional abuse is involved in all types of maltreatment of a child though it may occur alone.

The Designated Safeguarding Lead/Headteacher will keep a full record of concerns raised and make referrals to the First Contact Team, if necessary. These records may be either handwritten or electronic but will be stored via a secure system.

## Actions where there are concerns about a child



1. In cases which also involve an allegation of abuse against a staff member, see Part Four of this guidance
2. Early help means providing support as soon as a problem emerges at any point in a child's life. Where a child would benefit from co-ordinated early help, and early help inter-agency assessment should be arranged. Chapter One of [Working Together to Safeguard Children](#) provides details guidance on the early help process
3. Under the Children Act 1989, local authorities are required to provide services for children in need for the purposes of safeguarding and promoting their welfare. This can include s17 assessments of children in need and S47 assessments of children at risk of significant harm. Full details are in Chapter One of [Working Together to Safeguarding Children](#)
4. This could include applying for an Emergency Protection Order (EPO)



## **9.0 This policy MUST be read in conjunction with other related policies in school.**

These include:

- Safer Recruitment and Selection policy
- Human Resources policies and procedures.
- Staff Behaviour Policy (code of conduct) Safer Recruitment Consortium Guidance for Safer Working Practices for those working with Young People in education settings, October 2015.
- Behaviour & Discipline Policy
- Anti-Bullying Policy
- Online Safety Policy
- Inclusion & Special Education Needs Policy
- Educational Visits Policy
- Peer on Peer Abuse Policy
- Digital Images in School Policy
- Administration of Medicines Policy and Procedures with trained staff who manage this.
- Supporting Pupils with Medical Needs Policy
- Attendance Management Policy
- Children Missing in Education Policy
- Complaints Policy
- Allegation Management Policy
- Confidentiality and Whistle Blowing Policy.
- Information Sharing Policy
- Looked After Children Policy
- Personal and Intimate Care Policy
- Travel To and From School procedure
- Single Equality Scheme.
- Spiritual, Moral, Social and Cultural Curriculum

This template was originally developed by members of CAPE (The National Group of Education Leads for Safeguarding and Child Protection across the North West/East), Sunderland City Council Education Safeguarding Team remodelled and adapted it to suit local/regional need. In 2014, 2015, 2016 and 2017 this template was again revised in partnership with Pam Gartland: Safeguarding First Ltd to provide a guidance tool for schools in light of the new statutory DfE guidance Keeping Children Safe in Education.

It has been informed by the following legislation and national & local guidance

Education Act 2002 Section 175

[www.legislation.gov.uk/ukpga/2002/32/section/175](http://www.legislation.gov.uk/ukpga/2002/32/section/175)

Education (Independent School Standards) Regulations 2014

<http://www.legislation.gov.uk/uksi/2014/3283/schedule/made>

Non-Maintained Special Schools (England) Regulations 2015

<http://www.legislation.gov.uk/uksi/2015/728/made>

Keeping Children Safe in Education 2016

[https://www.gov.uk/government/uploads/system/uploads/attachment\\_data/file/526153/Keeping\\_children\\_safe\\_in\\_education\\_guidance\\_from\\_5\\_September\\_2016.pdf](https://www.gov.uk/government/uploads/system/uploads/attachment_data/file/526153/Keeping_children_safe_in_education_guidance_from_5_September_2016.pdf)

DfE Statutory framework for the Early Years Foundation Stage (EYFS) 2017

[https://www.gov.uk/government/uploads/system/uploads/attachment\\_data/file/596629/EYFS\\_STATUTORY\\_FRAMEWORK\\_2017.pdf](https://www.gov.uk/government/uploads/system/uploads/attachment_data/file/596629/EYFS_STATUTORY_FRAMEWORK_2017.pdf)

Children Act 1989/2004

<http://www.legislation.gov.uk/ukpga/2004/31/contents>



Working together to safeguard children HM GOV (2015)

[https://www.gov.uk/government/uploads/system/uploads/attachment\\_data/file/419595/Working\\_Together\\_to\\_Safeguard\\_Children.pdf](https://www.gov.uk/government/uploads/system/uploads/attachment_data/file/419595/Working_Together_to_Safeguard_Children.pdf)

Redcar and Cleveland Safeguarding Children Board Procedures

<http://www.teescpp.org.uk>

CP Referral Form

New Multi Agency Referral Form to Children's Social Care:

Click here to download the referral form

What to do if you are worried a child is being abused 2015

[https://www.gov.uk/government/uploads/system/uploads/attachment\\_data/file/419604/What\\_to\\_do\\_if\\_you\\_re\\_worried\\_a\\_child\\_is\\_being\\_abused.pdf](https://www.gov.uk/government/uploads/system/uploads/attachment_data/file/419604/What_to_do_if_you_re_worried_a_child_is_being_abused.pdf)

Data Protection Act 1998

<http://www.legislation.gov.uk/ukpga/1998/29/contents>

Sexual Offences Act 2003

<http://www.legislation.gov.uk/ukpga/2003/42/contents>

Safeguarding Vulnerable Groups Act 2006

<http://www.legislation.gov.uk/ukpga/2006/47/contents>

Freedom of Information Act 2000

[http://www.legislation.gov.uk/ukpga/2000/36/pdfs/ukpga\\_20000036\\_en.pdf](http://www.legislation.gov.uk/ukpga/2000/36/pdfs/ukpga_20000036_en.pdf)

## 10.0 Review

This Policy will be reviewed annually or in light of any changes in legislation and/or guidance. This policy will be updated by our School at any time that local solutions such as front door services in social care or the LADO details change. This policy may also be amended following the annual review with staff where our School's procedures or practices may change following whole staff discussion or training to ensure it is the most effective policy in keeping our children safe.

This policy must be ratified by the Governing Body.

Academic Year	Designated Safeguarding Lead	Deputy Designated Safeguarding Leads	Safeguarding Governor
2017/2018	Mrs A Hill	Mrs H Johnson	Mr R Brocklesby-Brown
		Mrs T Gainford	
		Mrs A Barron	

**Ratified by Governing Body on 16<sup>th</sup> October 2017**