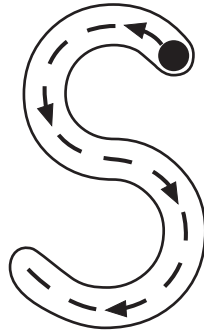


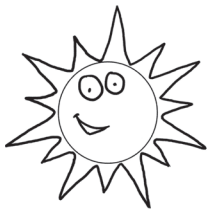
Extension



Trace and write the letters.

Tracing practice lines for the letter 'S'. The first row contains six 'S' characters on a three-line grid (top, middle-dotted, bottom). The first 'S' is solid, the second is dashed with arrows, and the remaining four are solid. The second row contains six dots on a three-line grid, with a small arrow above the first dot indicating the starting point and direction for writing the letter.

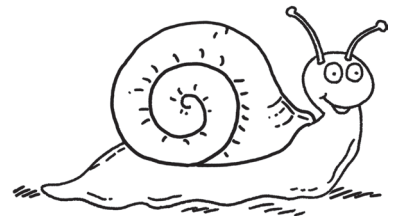
Finish the words. Colour the pictures.



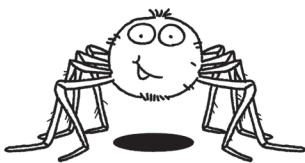
sun



scarecrow



snail



spider

