

CONTACT

The Newsletter for Whimble Primary School

Issue 13-18

30.11.18

School Photos

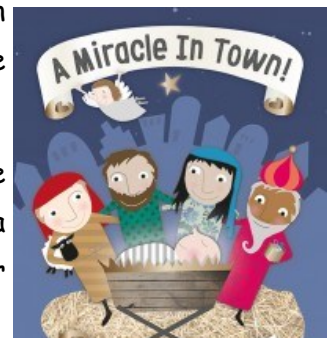
Hopefully, you should have all received a proof of your child's individual photo and family photographs are being sent home today.

Please return all orders and monies by the end of school on Tuesday 4th December.

A Miracle in Town

The Christmas production for our younger children is in full swing. As in previous years, each family will receive 4 tickets, 2 for each production. The afternoon performance will start at 2.15pm.

The staff of Ash and Elm class have been busy sorting costumes and are able to provide most things. If any additional items are required, you will receive a letter stating what is needed. If anyone can help supply a king, camel or shepherd costume, please let the class teacher know.



Book Fair

A big thank you to those who supported the book fair, from this we have been able to have nearly £40 worth of books for the school.

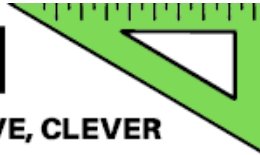
Musical Assemblies

The orchestra and soloists are performing on Thursday 6th December at 2.30pm in the hall. The choir, guitars, recorders will perform on Friday 14th December at 9.15 a.m. Please come and join us if you can.





BBC



CALLING ALL COMPETITIVE, CLEVER FAMILIES!

Would you love the chance to battle it out, in an exciting new TV intelligence competition?

We want to untap the extraordinary powers of your brain!

Does your mum have an amazing memory?
Can your auntie unravel complicated conundrums?
Is your brother king of sudoku?

This show is about **all** aspects of intelligence: logic, reasoning, communication, strategy and more.

It's not about what's in your brain, but how you use it!

As an individual you may not be good at everything, but as a family do you have what it takes to win?

For more information and to apply please email:

families@label1.tv

Family Teams must include 2 adults and 2 players aged 9-17 years old

For more information on how Label1 will hold, store and process your information, please go to: label1.tv/privacy-policy



Label 1



South West Athletics



DisAbility Sportshall Athletics



- Have a go at a range of sportshall athletics events
 - Running/wheeling jumping and throwing activities lead by local coaches
 - Open to all ages - children - adults with either a physical or learning disability
 - Sessions now FREE - see website for details - subsidised by Big Lottery funding
- come and do as many events as you like - family also welcome
Come and have a go!



DisAbility sportshall athletics activities for adults and children

- Sprints ● Hurdles ● Distance ● Relays
- Obstacle Relays ● Wheelchair have a go
- Standing Long jump ● Seated throws
- Speed Bounce ● Shot ● Turbo Javelin
- Balance Beam ● Vertical Jump plus more ...

10.40-11.30am
Sunday 28th October
Sunday 18th November
Sunday 9th December
Sunday 20th January
Sunday 24th February
Free Sessions

at Riverside Leisure Centre, Exeter EX4 1AF

07745 616852

Participation - Potential - Performance

website: www.sw-athletics-academy.co.uk



South West Athletics Academy

EXETER Sportshall Athletics



- Come and have a go at a range of sportshall athletics events
 - Running jumping and throwing activities lead by local coaches
 - 2 groups - Minis age 4-7, Juniors age 8-11 (all events are inclusive)
 - £6.50 (early bird) £7.50 (pre booked), £8 if pay on the day see website for details
- then come and do as many events as you like
Come and have a go!



Inclusive sportshall athletics activities for children

- Sprints ● Hurdles ● Distance ● Relays
- Obstacle Relays ● High Jump
- Standing Long jump ● Triple Jump
- Speed Bounce ● Shot ● Turbo Javelin
- Balance Beam ● Vertical Jump plus more ...

9.15-10.30am
Sunday 28th October
Sunday 18th November
Sunday 9th December
Sunday 20th January
Sunday 24th February

at Riverside Leisure Centre, Exeter EX4 1AF

07745 616852

Participation - Potential - Performance

website: www.sw-athletics-academy.co.uk

Don't Forget

- To order your photos by the end of the day on Tuesday 4th.
- To book your child's Christmas dinner and start making Christmas hats!

Dates for your diary

December

Wednesday 5th December	Year 6 meal with parents
Thursday 6th December	Orchestra and soloists assembly 2.30pm
Friday 7th December	Non-pupil day
Wednesday 12th December	Christmas Dinner
Thursday 13th December	Carol Service at Church
Friday 14th December	Choir, guitars and recorders assembly 9.15a.m.
Tuesday 18th December	Early Years and Key Stage 1 Nativity 4pm
Wednesday 19th December	Early Years and Key Stage 1 Nativity (2.15pm)
Thursday 20th December	Christmas Fayre
Friday 21st December	Last day of term - 1.30pm finish

Headteacher: Mrs. Carole Shilston

Telephone/fax: 01404 822584

Email: admin@whimple-primary.devon.sch.uk

Website: www.whimple-primary.devon.sch.uk