



[www.gosforthpark.newcastle.sch.uk](http://www.gosforthpark.newcastle.sch.uk)

Dear Parents and Carers

### *What a week!*

First of all, I would like to say a huge thank you to you all for your patience and understanding this week. We've had lots of messages of support and thanks for everything our wonderful staff are doing for the children both in school and at home.

I hope that you are all adjusting and are managing the demands of juggling work and having children at home. We know how tricky this can be, especially on these dark and colder days when it's harder to get outside, although I'm sure today's weather will have caused great excitement!

Due to the number of Key Worker and Vulnerable children in school, all teaching, support, lunch and office staff are working in school as usual.

Teachers and TAs are sharing teaching and the supervision of bubbles so that there are opportunities in the day for teachers to set work for children at home, make videos, and to respond to learning on SeeSaw and Tapestry.

We are continuing with our planned curriculum for the children in school and at home and the children are following the same objectives.

It has been a steep learning curve for us all this week with technology, as I'm sure it has for some of you at home too, so please bear with us.

We understand that some of you will be experiencing technical difficulties— please do not worry but do get in touch if we can help.

8<sup>th</sup> January 2021 Issue 1 Spring Term 1

### **Home Learning**

Staff will be posting remote learning daily via Tapestry (Nursery and Reception) and SeeSaw (Years 1-4).

There will be a daily

- Morning video
- Maths Lesson
- English Lesson
- Topic Lesson
- Afternoon video.

Please also remember that you have access to additional resources via Mathletics, Oxford Reading Buddy, Times Table Rock Stars and PurpleMash too.

We are pulling together some resources for those of you at home, including a writing and maths exercise book, your school reading diaries, class novels (KS2) and a couple of reading books (EYFS and KS1). We are still working out the logistics of getting these to you safely under the current restrictions and will be in touch about this once the resources are ready.

Please remember that we do not expect you to get through everything every day. There is no element of competition and often the reality of home learning is very different to what we might see through the rose tinted lenses of some social media groups. Families all have different priorities and demands on their time.

We know that children will have good and bad days at home and that it might be difficult to motivate them some days, especially when you are busy managing your own time and work at home.

We will be updating our school website and signposting additional resources on there soon.

## Key Workers

For those of you who **have not** been offered a key worker place in school, if you are struggling, please let us know. This way, we can keep the local authority updated with the demand for number of places. Thank you to those who have already been in touch.



Please make sure children attending school wrap up warmly and have layers that they can add/remove through the day. Doors and windows are open to aid ventilation. On days like today, please send children in wearing wellies with a change of shoes in a carrier bag.



Well done to Yellow Class again for being our top participants.

Well done to **Ayla Seccombe** and **Lola Anderson** for gaining the most points this week.

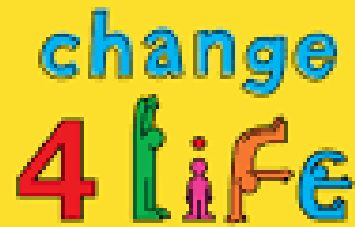


Well done to **Millie Anderson**, **Jemima Bond** and **Leo Tomlinson** for achieving the record for top studio speeds. Wow Jemima, you've been working so hard on your times tables!

Ms Gasper



Our Oxford reading buddy this week is **Hadi Kayani**, well done!



Unfortunately, due to the current restrictions, the delivery of free fruit to our EYFS and KS1 pupils has been suspended. Children can bring a healthy snack to school (piece of fruit, frubes, fruit/cereal bar). Please make sure children can easily open any packets or tubs that these are stored in and remember to cut any grapes or cherry tomatoes in half lengthways.

## COVID

For children attending school, please continue to let us know about any COVID related absences in the usual way.

Remember if you or your child are self-isolating the guidelines are as follows...

*Self-isolation is when you do not leave your home because you have or might have coronavirus (COVID-19).*

*This helps stop the virus spreading to other people.*

### **How to self-isolate**

*You must not leave your home if you're self-isolating.*

### **Don't**

- do not go to work, school or public places – work from home if you can
- do not go on public transport or use taxis
- do not go out to get food and medicine – order it online or by phone, or ask someone to bring it to your home
- do not have visitors in your home, including friends and family – except for people providing essential care
- do not go out to exercise – exercise at home or in your garden, if you have one

For more information visit

<https://www.nhs.uk/conditions/coronavirus-covid-19/self-isolation-and-treatment/when-to-self-isolate-and-what-to-do/>

## Covid Related Pupil Absence Guide

	Scenario	Action required
1	<p>My child has COVID-19 symptoms:</p> <ul style="list-style-type: none"> <li>• <b>High temperature</b></li> <li>• <b>New continuous Cough</b></li> <li>• <b>Loss or change to sense of smell or taste</b></li> </ul>	<p><b>DO NOT ATTEND SCHOOL</b></p> <p>Ring school immediately.</p> <p>Book a test <a href="https://www.nhs.uk/conditions/coronavirus-covid-19/testing-and-tracing/get-a-test-to-check-if-you-have-coronavirus/">https://www.nhs.uk/conditions/coronavirus-covid-19/testing-and-tracing/get-a-test-to-check-if-you-have-coronavirus/</a></p> <p>Self-isolate everyone in your household while you wait for the test result.</p>
2	The test result is negative	<p>Ring school immediately.</p> <p>If well enough, your child can return to school on the following day (or the same day if possible).</p>
3	The test result is positive	<p><b>DO NOT ATTEND SCHOOL</b></p> <p>Everyone in your household must self-isolate for 14 days. The person who has a positive test must self-isolate for 10 days or until they are well (we will authorise 14 days self-isolation absence as we understand the practical difficulties in getting your children to school if you are self-isolating for 14 days)</p>
4	My child is unwell with non COVID-19 related symptoms	Follow the usual school absence procedures.
5	Someone in my household has COVID symptoms	<p><b>DO NOT ATTEND SCHOOL</b></p> <p>Ring school immediately.</p> <p>Book a test <a href="https://www.nhs.uk/conditions/coronavirus-covid-19/testing-and-tracing/get-a-test-to-check-if-you-have-coronavirus/">https://www.nhs.uk/conditions/coronavirus-covid-19/testing-and-tracing/get-a-test-to-check-if-you-have-coronavirus/</a></p> <p>Self-isolate everyone in your household while you wait for the test result.</p>
6	Someone in my household has tested positive for COVID-19	<p><b>DO NOT ATTEND SCHOOL</b></p> <p>Ring school immediately.</p> <p>Self-isolate everyone in your household for 14 days.</p> <p>The person who has tested positive must self-isolate for 10 days from the onset of symptoms.</p>
7	NHS Test and Trace has identified my child as being in close contact with someone who has tested positive for COVID-19 <b>or</b> I know that my child has had close contact with someone who has tested positive for COVID-19	<p><b>DO NOT ATTEND SCHOOL</b></p> <p>Ring school immediately.</p> <p>Your child will have to self-isolate for 14 days. Other members of your household do not need to self-isolate. If your child develops symptoms in the self-isolation period, follow the advice for scenario 1. If another member of the household develops symptoms, follow the advice for scenario 5.</p>

8	We are returning from travel to a country where a period of quarantine is necessary.	<p><b>DO NOT ATTEND SCHOOL</b></p> <p>Follow advice regarding the need to quarantine <a href="https://www.gov.uk/foreign-travel-advice">https://www.gov.uk/foreign-travel-advice</a> and how to quarantine <a href="https://www.gov.uk/government/publications/coronavirus-covid-19-how-to-self-isolate-when-you-travel-to-the-uk/coronavirus-covid-19-how-to-self-isolate-when-you-travel-to-the-uk">https://www.gov.uk/government/publications/coronavirus-covid-19-how-to-self-isolate-when-you-travel-to-the-uk/coronavirus-covid-19-how-to-self-isolate-when-you-travel-to-the-uk</a></p> <p>Ring school immediately so that we are aware and so that we can agree a return to school date.</p>
9	We have received medical advice that my child needs to resume shielding	<p><b>DO NOT ATTEND SCHOOL</b></p> <p>Ring school immediately.</p> <p>Shield until you are informed that restrictions are lifted and shielding is paused again.</p>
10	My child's school bubble has been told to self-isolate.	<p><b>DO NOT ATTEND SCHOOL</b></p> <p>School will contact you to share the advice from Public Health England and to inform you of a return to school date and arrangements for remote learning.</p>

