



# Gosforth Park First School

[www.gosforthpark.newcastle.sch.uk](http://www.gosforthpark.newcastle.sch.uk)

10<sup>th</sup> May 2019 Issue 3 Summer Term 1



O<sub>2</sub> ☺ NSPCC

Let's keep kids safe online

**We're here to help you keep your child safe online**

O2 and the NSPCC have joined forces on a mission to help all children and their families in the UK stay safe online. Together, they're offering useful tools, support and guidance to help parents and carers have frequent conversations with their children about their online lives.

**Our free online safety workshop for parents and carers**

We would like to invite all parents, carers or family members to a free **online safety workshop** at **Gosforth Park First School** from **2:30 – 3:15** on **Tuesday 14<sup>th</sup> May**. The content covered in the workshops is aimed at adults. Parents with children are advised to arrange childcare if possible. Don't miss out on this great opportunity. If you haven't done so already, please RSVP by returning the slip on the letter which was sent out in the first week of term. Or if you have misplaced it, please leave a message at the office to let us know that you'll be attending.

Until then, if you need any support or guidance about keeping children safe online, here are a few things you could do:

- Visit our [NSPCC](#) and [O2 NSPCC website pages](#),
- Call our free **O2 NSPCC Online Safety Helpline** on **0808 800 5002**
- Download our Net Aware app on the App Store or Google Play
- Pop into your local O2 store for online safety help from a [Guru](#) – you don't even have to be an O2 customer!
- Sign up to our [icebreaker email series](#).

Mrs Lamb

## Daft Day!

On Friday 24<sup>th</sup> May we will be ending the term with the Gosforth Schools' Trust Daft Day! Children are invited to come to school dressed in 'daft' things. The children have suggested PJs, onesies, clown outfits, daft hair styles and accessories and daft face paint. You can be as daft or as sensible as you like. We will be collecting donations on the day to support our local charity Daft as a Brush!



**Daft as a Brush**  
CANCER PATIENT CARE

## Sunny Weather

It's lovely in the sunny weather (not that we've had any this week!) to see our families enjoying our grounds after school. Please remember that as the Out of School Club hires our grounds, and for their own safeguarding purposes, all GPFS parents must be off site by 3:45pm

Many thanks for your cooperation

Mrs Lamb

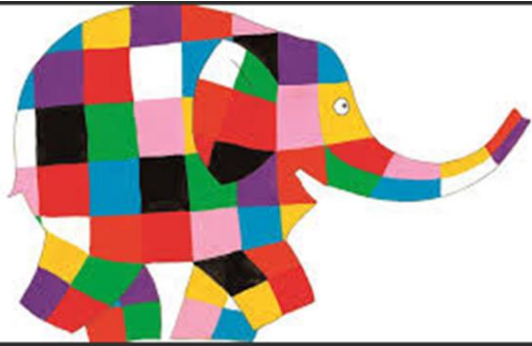
## Orange Class Assembly

**Friday 17<sup>th</sup> May**

Doors will open as soon as we can get the hall ready (no later than 9:15) so you can have a cuppa and a chat, then the children will come down at 9:30. We look forward to seeing you there!



## Elmer Update



We are very excited for our Elmer reveal assembly next Wednesday. Don't forget to enter the competition to name our Elmer, winners announced next week.

Thank you for all the milk containers so far, we're still collecting.

## Visiting Author

We have a special author visit next Thursday - Jason Beresford the author of the 'Fabulous Four Fish Fingers' series. Jason is a fantastic writer, teacher and bad ukulele player! Before he wrote children's books, Jason worked in TV including stints reading the news and directing Emmerdale and Coronation Street. There will be creative writing sessions and an assembly for Years 1-4. Jason will be available for a book signing at the end of the day where there will be a selection of his books for sale at a discounted price of £6.30 (usually £6.99)



## What is Open Day?

For our current school parents, we have given the advance notice of open day in the newsletter for a few months now as we know it's the highlight of the school calendar for many families who like to make sure they can get time booked off work. However, for our new parents, what is Open Day?

On Open day, Friday 21<sup>st</sup> June, we open the school gates to families at 12:30. After parents have signed in at the gate (and signed up to our safety protocols) they then collect their children who are lined up on the yard in classes.

We keep our fingers crossed for good weather as families then gather together to enjoy a picnic lunch on the school field. Make sure you bring your family lunch (nut free and glass free) and you may also want to bring a blanket. Some families have even turned up with camping chairs and tables!

During the lunch period (12:30 – 1:15) you will be able to buy refreshments, raffle tickets, pre-loved uniform etc from the PTA.

The children will then be taken back into class at 1:15 and registered.

We then open the doors to school at 1:30 and families are invited to join their children in class. The afternoon usually consists of 3 sessions (two activities in class and a look around our exhibition in the school hall) with a break.

It's a great chance for you to get hands on in class, working together with your child on an activity and being able to see the fantastic work the children have been doing on in the lead up to Open Day. This year our Open Day work will be themed around Elmer.

There will be more information nearer the time and we look forward to seeing you there!

# Walk to School Week!

Monday 20<sup>th</sup> May to Friday 24<sup>th</sup> May is walk to school week. This is a countrywide celebration of walking. We hope to have lots of children and their families walking to school in that week!

Miss Walsh



## Children's Cancer Run Essential Information

Thank you so much for joining our school team for the 37<sup>th</sup> Children's Cancer Run on **Sunday 19<sup>th</sup> May 2019**. I am very much looking forward to taking part and thrilled so many of you can attend.

Please arrive at Newcastle Racecourse, Gosforth Park by **11:20am** ready for our **11:40am start**. Our designated **car park is A**. Meet by our school banner at the school meeting point.

I am very much looking forward to seeing you there on the day! Thank you for helping our school to make a difference.

Miss Walsh

# Homework

Class	
Green	Maths-sharing amounts Phonics-split diagraphs
Orange	Maths-multiplication revision Phonics-ew/ey sounds
Yellow	English – contractions Maths-multiplication revision
Indigo	Maths: Mathletics; Fractions Spellings
Violet	Fractions of amounts
Blue	Decimals consolidation (Last decimals homework- yay!) Times tables (up to 12x12) Any way you want!



Well done to Archie Barratt who has passed his Level 3 Swimming award.

Well done to Luke Blyth who has passed his Stage 3 Swimming award.

Well done to Emily and Lauren Graham who have both gained their 50 metre swimming badge.



## Classes of the Week!



The attendance cups for this week's best attendance were won by **Orange** and **Violet** class (again!).

Our attendance this week was 97.5%, the same as the last week, and still a huge improvement on last year (96.7%)

We had 15 lates this week (9 families)

Thank you so much for your support.

Mrs Lamb



Our Mathletics trophy goes to **Yellow Class** this week and our Mathletes of the week are **Magnus Gouty**, and **Hunain Hashim!**

Well done!

# Advanced Notice of Dates

Tuesday 14 <sup>th</sup> May	Reception Trip to Whitehouse Farm
Thursday 16 <sup>th</sup> May	Author, Jason Beresford, Visiting all classes (kindly paid for by the PTA)
Thursday 16 <sup>th</sup> May	Blue Class Visit to Walker Activity Dome
Thursday 16 <sup>th</sup> May	Robinwood Presentation Evening from 6:30 pm in the School hall
Monday 20 <sup>th</sup> May	Laing Art Gallery Artist working with Reception SC and Green Class
Tuesday 21 <sup>st</sup> May	Laing Art Gallery Artist working with Orange and Yellow Class
Thursday 23 <sup>rd</sup> May	Laing Art Gallery Artist working with Reception SW, and KS2
Thursday 25 <sup>h</sup> May	Year 2 Skipping Festival (in school in the afternoon)
Friday 21 <sup>st</sup> May	PTA Meeting 7pm in the school hall – all welcome!
Friday 24 <sup>th</sup> May	Daft as a Brush Day
Friday 24 <sup>th</sup> May	Break up for May half term
Monday 3 <sup>rd</sup> June	Training Day
Tuesday 4 <sup>th</sup> June	School reopens
Tuesday 4 <sup>th</sup> June	Year 4 Transition morning at GEMS 9:15 – 12:00
Tuesday 4 <sup>th</sup> June	New Reception Parents Evening from 6:30pm in the school hall
Thursday 6 <sup>th</sup> June	Year 3 Initial Robinwood meeting 6:30pm school hall
Tuesday 11 <sup>th</sup> June	New Nursery Parents Evening from 6:30pm in the school hall
Tuesday 18 <sup>th</sup> June	KS2 at The Big Gig all day
Friday 21 <sup>st</sup> June	Open Day from 12:30
Monday 24 <sup>th</sup> June	Year 2 Trip to Safety Works (afternoon)
Wednesday 26 <sup>th</sup> June	Year 2 Trip to Safety Works (afternoon)
Wednesday 26 <sup>th</sup> June	Author Visit, Guy Bass, for Year 3 and 4
Wednesday 3 <sup>rd</sup> July	Year 4 Transition day at GEMS
Mon 1 <sup>st</sup> July – Friday 5 <sup>th</sup> July	Sports Week
Thursday 4 <sup>th</sup> July	Year 4 Transition day at GEMS
Thursday 4 <sup>th</sup> July	In school transition – children meet class teachers for September
Friday 12 <sup>th</sup> July	End of Year reports out to parents
Thursday 18 <sup>th</sup> July	Year 4 Leavers Assembly (am approx. 9:15 – 11:20 details TBC)
Friday 19 <sup>th</sup> July	Break up for Summer Holiday
Monday 2 <sup>nd</sup> September	Training Day
Tuesday 3 <sup>rd</sup> September	School reopens



# The Friends of GPFS

## Open Day 2019

Last year, at the annual GPFS Open Day, the PTFA tried something for the first time during the picnic hour which was hugely popular and successful. We ran stalls selling drinks, cakes, preloved books and school uniform, raffled off some amazing prizes and held a silent auction (all the prizes had been kindly donated by local companies). In the space of an hour we made over £900.

This year's Open Day is on **Friday 21<sup>st</sup> June 2019** and we are planning to do it all again! We already have a few prizes for the raffle and will be holding refreshment and cake stalls. To do this we will need lots of volunteers to help cover the stalls and sell raffle tickets, and we would be very grateful for donations of raffle prizes. Nearer the date we will also be asking for Nut Free Cake donations as well.

If you would be able to help us either on a stall or by donating a prize for the raffle please get in touch with your class rep or email us at [2005friends@gosforthpark.newcastle.sch.uk](mailto:2005friends@gosforthpark.newcastle.sch.uk).



### Thank You!

A huge **Thank you** to Asda who have kindly donated some amazing prizes for our Open Day Raffle. We are very grateful to Michelle and Asda for all of their support at all of our events.

Also big thanks to Newcastle City Golf who were a massive support to our Parklands Crossing Committee and have also generously donated a prize for our Open Day Raffle.

Thank you to Al Walker, for keeping us well stocked up on much needed cups for refreshments and for the amazing Chocolate Hamper donated as a prize at our Spring Disco.

### Online Fundraising

There are several companies who offer online donations for our PTFA, all you have to do is follow the links below and order online as usual (enter the codes below where applicable) and help us raise much needed funds for school!

**Stamptastic!** <https://stamptastic.co.uk/> School Code NE3 5JQ 20% of order value is donated to PTFA

**My Nametags** <https://www.mynametags.com/> School code 27804 20% of order value is donated to PTFA

**Easyfundraising** <https://www.easyfundraising.org.uk/> sign up and help us raise money whilst you shop online.

### May Meeting

Our next meeting will be on **Tuesday 21<sup>st</sup> May at 7pm** in the school hall. As always, all are welcome to attend.

On Behalf of the Friends of GPFS

Have a lovely weekend,

Jen Higgins

Chairperson