

Newsletter November 2016



Welcome back to the second half of the autumn term and of course the run up to the 'big event'! We have lots of activities planned for our children and of course our ongoing Forest School activities. The weather will be getting colder so can we ask that all children have warm coats, hats and gloves in school at all times, along with their wellies and a change of clothes.

PE

This half term, and also after Christmas up to February half term, our children from Reception to Year 4 will be attending



the Willowburn Leisure Centre in Alwick on a Thursday afternoon from 1-2pm to take part in Trampoline and Boulder Walling sessions. They will need a full PE kit, t-shirt, shorts and trainers, for these sessions. These sessions begin on Thursday 3rd November and finish on Thursday 16th February.

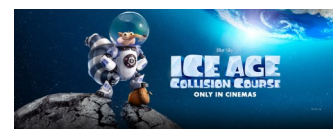
Multi-Skills Festival

Our Year 1 and 2 children will be taking part in a Multi-Skills Tournament at Willowburn on Wednesday 9th November, from 12.30-2.15 pm along with other schools in our partnership. The children will need their full PE kits (shorts, t-shirts and trainers). They will all return to school for the end of the school day. Football will take place as usual for Reception, Years 3 and 4, as will the after school club for everyone.



Intu Film Festival

Our Reception to Year 4 children will be visiting the Vue Cinema in Cramlington on Thursday 17th November to see the new Ice Age film 'Collision Course' as part of the Intu Film Festival. Intu supply the films for our in school film club. They will leave school after registration, visit the cinema for the film and then go straight to Willowburn for their PE session. The children will have a packed lunch on that day at Willowburn. They will then return to school as usual after their PE session. Our children will need to be dressed in their school uniform and take their PE kits with them. On that day our nursery children will be in school as usual with Mrs Ryan and Mrs Bone, and the Goslings session will also run as usual.



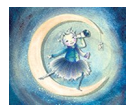
Christmas Performance!

This year our Christmas Performance will take place at 2pm and 6pm in the Breamish Hall, Powburn on Friday 9th December. We are performing 'A Midwife Crisis', a nativity by Gaynor Boddy and Rebecca Kincaid. Everyone is welcome to come along and join us! Tickets will go on sale in school on Monday 21st November. Our PTA will have more information to follow about fundraising events on the evening and in the run up to the event.



Northern Stage

On the morning of Wednesday 23rd November our children in years 1, 2, 3 and 4 will be visiting the Northern Stage to see a production of **James and the Giant Peach**, a performance packed with songs and opportunities to join in!



On Wednesday 7th December our Early Years children in Nursery and Reception will be visiting the Northern Stage to see a production called **Luna**, all about friendship the moon and being afraid of the dark, aimed at children from 2 to 4 years of age. We have booked tickets based on the children we expect to be in school or nursery on that day. Please return the permission slip attached.

Alnwick Gardens



We will be visiting the Alnwick Gardens for a 'festive' morning on Tuesday 13th December. Afterwards we will return to school for our Party Lunch, followed by our Christmas Party in the afternoon. We have booked sufficient tickets for all our children, including our nursery, as we felt sure they would all like to take part in this event. Can you please indicate on the reply slip if you wish your nursery child to attend on that day and also if they will stay for the party in the afternoon?

PTA Committee

Our PTA re-elected their committee at the AGM last month. The re-elected committee are -Chair, Abi Wilson; Vice Chair, Diane Laws; Secretary, Coco Oates and Treasurer, Sarah Rogerson. Please do contact them with any ideas for future fundraising events or if you would like to become involved.

Dates for your diary -

Tuesday 1st November - School reopens, Parents Evening 3.30-5.30 pm

Thursday 3rd November -Parents Evening 3.30-4.30 pm

Wednesday 9th November - Multi-Sports Festival for Years 1 and 2.

Thursday 17th November - Intu Film Festival Ice Age Collision Course Vue Cinema Cramlington for Reception to Year 4. Nursery in school as usual. Goslings as usual.

Wednesday 23rd November - 'James and the Giant Peach' at Northern Stage (Y1,2,3&4)

Wednesday 7th December - 'Luna' at Northern Stage (Reception and Nursery)

Thursday 8th December -Dress Rehearsal at Breamish Hall, pick up from there please.

Friday 9th December - Christmas performances at Breamish Hall, 2pm and 6pm

Tuesday 13th December - visit to Alnwick Gardens a.m., party lunch, Christmas Party p.m.

Thursday 15th December - Christmas Service **Ingram** Church 10 am, please note change of venue! And afterwards at school for refreshments.

Friday 16th December - End of term school closes at 2pm.

Christmas Holiday

Monday 2nd January 2017 - Bank Holiday

Tuesday 3rd January 2017 - School opens at 9 am

The Branton and Breamish Team

Find us at www.branton.northumberland.sch.uk

Contact us on 01665 578225, or email

admin@branton.northumberland.sch.uk