

Longhorsley School News

SPRING TERM



week ending 8th February 2019

Following Mrs Brannen's Headteacher's News, **HAPPY NEW YEAR** and 'thank you' for all your cards and gifts at Christmas. We hope you had a lovely break.

Welcome to 2019, to the Spring Term and to our new Nursery children: Anastasia, Lucas, Sam, Caitlyn, Hunter, Izabelle, Oliver and Arlo.

Apologies for the delay in this News being issued.

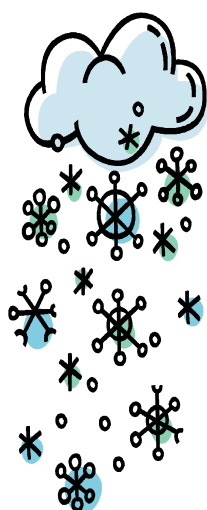
SPRING TERM TOPIC -

Early Years and Key Stage 1 will be looking at **Transport and Travel** while

Key Stage 2 will be taking a **Road Trip across the United States of America**

We will all be taking part in Safer Internet Day, Science Week, World Book Day and Comic Relief Red Nose Day and learning about the Chinese New Year and the Easter journey - detailed information available on our website.

WINTER WEATHER - the first of the snow has fallen and we would like to remind you all to send your children to school in suitable outdoor footwear with a change for indoors. A spare pair of socks, kept in their PE bag, would be useful too - either for our Monday afternoon sports sessions or if feet get wet!



SEVERE WEATHER PROCEDURES - in the event of severe weather causing school to be closed we use the Schoolcomms text messaging service to inform all parents of any closure. Also all school closures will be posted on our website at www.longhorsley-st-helens.northumberland.sch.uk.

Northumberland County Council post school closures in the following places - website (www.northumberland.gov.uk);

facebook (www.facebook.com/nccalerts);

twitter (www.twitter.com/northumberlands) - we would advise you to please check the Northumberland County Council homepage during periods of bad weather for regular weather updates and announcements of any schools closed, or services affected.

In order for this service to be effective and efficient it is vital that we have up to date contact details for each of you. Remember, if you have changed either your mobile phone number please let us know as soon as possible in order to keep our records up to date.

Drummonds Close, Longhorsley, Morpeth NE65 8UT
01670 788316

longhorsleyadmin@fedlongwhaltschools.uk

www.longhorsley-st-helens.northumberland.sch.uk



Schoolgateway

We are making progress and learning from our mistakes, it is a learning curve - we already know we need to make changes to how we set up each payment and will do so for all future payments requested. As parents, we need you all to activate your accounts if you have not already done so, and when making a payment check you are putting it into the correct named pocket - there will be payments set up for each term.

In order to help get everyone on the right track, we will send out a note advising in which pocket and what monies are owed for the Autumn Term and up to the end of this term.

Monies owed for this term are as follows:

DINNER MONIES - Spring Term 2019

The cost of **school dinners** is £11.00 per week per child (still only £2.20 per day) and a minimum payment of £11.00 can be made on your Gateway account. The amount for Spring Term 1 is **£66.00** and for Spring Term 2 **£66.00** - a total of **£132.00** for the whole of the Spring Term

SWIM/GYM/WALL - Spring Term 2019

The cost of **swim/gym/wall** is £2 per week per child and a minimum payment of £12 can be made. The amount for Spring Term 1 is **£12.00** and for Spring Term 2 **£12.00** - a total of **£24.00** for the whole of the Spring Term

AFTER SCHOOL CLUBS - Spring Term 2019

The cost of **After School Clubs** has been advised individually and the total amount is now due.

MUSIC TUITION - Spring Term 2019

The cost of instrument hire is **£22** and ten lessons are **£60** - a total of **£82**

MILK - Spring Term 2019

The cost of milk is **£12** for the whole of the term.

Cash and cheques are currently still being accepted, however we are working towards all payments being made online via the Gateway system. All Middle Schools and the High School in our partnership use this system and you will need to be ready for them. Thank you.

~ ~ ~ ~ ~ ~ ~ ~ ~ ~ ~ ~ ~ ~ ~ ~ ~ ~

DON'T FORGET - we are **collecting postage stamps** for recycling for the **Great North Air Ambulance**, one of our chosen charities for this year. Please save them from your correspondence and send them in to go in our post box in the foyer. Thank you.

REMINDER 'SCHOOL NEWS' is available on the home page of our website (www.longhorsley-st-helens.northumberland.sch.uk) and back copies are available in the Office section under Newsletters.



Once a Week,
Take a Peek

HEAD LICE - a reminder to check your child's hair once a week to keep head lice outbreaks to a minimum please. We have had reports of head lice in school. Head lice and nits are very common in young children and their families. They don't have anything to do with dirty hair and are picked up by head to head contact. Lice can also be spread through the sharing of personal articles like hats, towels, brushes, helmets, hair ties, etc. There is also a possibility of spreading head lice via a pillow, headrest or similar items. Head lice do not jump or fly and generally cannot survive longer than 24 hours off the host.

DATES FOR 11TH FEBRUARY - 1ST MARCH 2019

Monday 11 th February	Before School INDOOR SPORTS Club (6 of 6) Swim (Y1,3)/Gym (Y2,4)/Wall (YR)
Tuesday 12 th February	
Wednesday 13 th February	
Thursday 14 th February	
Friday 15 th February	School breaks up for half term
~ ~ ~ ~ ~ ~ ~ ~ ~ ~ ~	
Monday 25 th February	Before School INDOOR SPORTS Club (1 of 6) Swim (YR,2,4)/Gym (Y1)/Wall (Y3)
Tuesday 26 th February	After School COOKERY Club (1 of 4)
Wednesday 27 th February	After School GYMNASTICS Club (1 of 6)
Thursday 28 th February	am Sponsored Run/Walk
Friday 1 st March	9:00 Family Service in St Helen's Church
~ ~ ~ ~ ~ ~ ~ ~ ~ ~ ~	

TERM DATES for Spring Term 2 Monday 25th February -
Friday 5th April

SCHOOL UNIFORM - PLEASE NOTE ALL sweatshirts, sweatcardis, PE kit and sweathoodies are now available online from School Trends at the following link:
<https://www.schooltrends.co.uk/uniform/LonghorsleyCEFirstSchoolNE658UT>

We understand there has been a huge delay in meeting your orders which we believe has been due firstly to non-supply of garments and then by School Trends going into Administration at the end of December before being taken over and re-commencing trading again in January. We were advised that orders would be met by mid to late January - and have since heard that all orders prior to January have been despatched. We are further informed that all orders taken from January onwards are taking approximately 21 days for processing.

DIARY DATES 2018-19

February 2019		
Friday 1 st February	Family Service	9:00 St Helen's Church
Tuesday 5 th February	Safer Internet Day	activities in school
Thursday 7 th February	Churches Visit	Morpeth
Friday 15 th February	School breaks up for half term	3:15
Friday 22 nd February	Teacher Training Day	
Monday 25 th February	SCHOOL RE-OPENS - Spring term 2 Fair Trade Fortnight begins Before School INDOOR SPORTS Club 1st swim (YR,2,4) / gymnastics (Y1) / bouldering wall (Y3) session After School COOKERY Club (FULL - places allocated to those not in Autumn term)	8:20-8:50 (1 of 6) pm Willowburn Leisure Centre 3:15-4:30 (1 of 4)
Tuesday 26 th February	1st Gymnastics session After School GYMNASTICS Club	3:15-4:15 (1 of 6)
Wednesday 27 th February	Charity Sponsored Run/Walk	am
March 2019		
Friday 1 st March	Family Service	9:00 St Helen's Church
Thursday 7 th March	World Book Day	
Friday 15 th March	Comic Relief Red Nose Day 2019	activities tbc
tbc	Easter Journey	
tbc	Swimming Gala at Willowburn	am
25 th 26 th March	Pupil Progress Updates	
April 2019		
Friday 5 th April	Easter Service followed by PTA Coffee Morning School breaks up for Easter holidays	9.15 Longhorsley Mission then in School 3:15

**Dates/events will be updated as and when required, please check regularly
to ensure you don't miss anything**

REMINDER 'SCHOOL NEWS' is available on the home page of our website
(www.longhorsley-st-helens.northumberland.sch.uk) and back copies are available
in the Office section under Newsletters.

e-SAFETY - useful sites are: ThinkUKnow - <https://www.thinkuknow.co.uk/>
Childnet - <https://www.childnet.com/>
NSPCC - <https://www.nspcc.org.uk/preventing-abuse/keeping-children-safe/online-safety/>
Safety Net Kids - www.safetynetkids.org.uk/personal-safety/staying-safe-online/

Longhorsley Tree *(previously The Gloria)*

the monthly newsletter for the parish of St Helen's, Longhorsley available online at
site.google.com/site/longhorsleytree

If you would like to submit an article in the monthly newsletter please contact
Alan & Sue Etchells, tel 788847 / email longhorsley.tree@gmail.com
or leave in the postbox in the Village Hall
articles for the next edition should be submitted by mid month

ADVANCE NOTICE

WORLD BOOK DAY Thursday 7th March 2019

Theme: To share a book about one of our core values – hope, honesty, forgiveness, friendship, trust, love.

Come dressed up as a book character (eg the hare from 'Guess How Much I Love You?') or wear non-uniform, whatever you feel most comfortable in.

Bring a donation of £1 to go towards our Great North Air Ambulance / Dogs Trust collection



NON UNIFORM DAY FOR COMIC RELIEF - bring £1

Theme: colour - how many colours of the rainbow can we make?

We are going to be learning about charities all over the world that help people who are less fortunate than ourselves. We will have a non-uniform day for Comic Relief and a day of giving to one of the charities that our RE Ambassadors have been researching - we will vote as a whole school for our favourite and bring in a themed gift if we can it may be a tin of food or a hygiene product to be donated to Wansbeck Food Bank, an item of clothing for Cancer Research to be donated to the Morpeth shop following an urgent appeal from them, a pair of spectacles for a scheme in aid of the international sight charity, Vision Aid Overseas, to go to Morpeth Specsavers, or help UNICEF to reach even more children in danger by donating your old or unwanted shoes at your nearest Clarks store (your shoes will help to change children's lives by buying educational equipment such as the 'School in a Box'.

Look out for the next RE Ambassadors' Newsletter

Longhorsley St Helen's C of E First School PTA

Chair - Mrs Sarah Waterston

Secretary - Mrs Milly Archibald

Treasurer - Mrs Kate Matheson

Helpers: Claire Bright - Emma Lawton - Andrea Light - Jayne Manners

Wayne Gunn - Zoe Nelles - Fiona Hindmarsh

DATE/S FOR YOUR DIARY:

5th April

Coffee Morning in School after the Easter Service in Longhorsley Mission. Further details to follow.



We still have a few **WATER BOTTLES**, at only **£3.50** each, available in school.

Hydration is very important for children in school, it has been proven that performance and concentration improves with a regular intake of water.

The water bottles are hands free, special cap, screw lid, bpa free, dishwasher safe - for further information visit www.schoolbottle.co.uk.