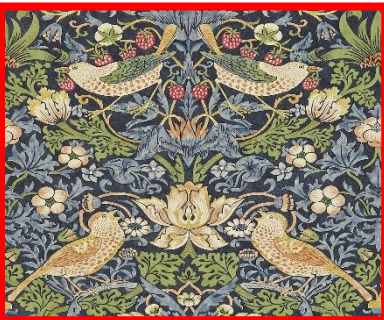


# William Morris

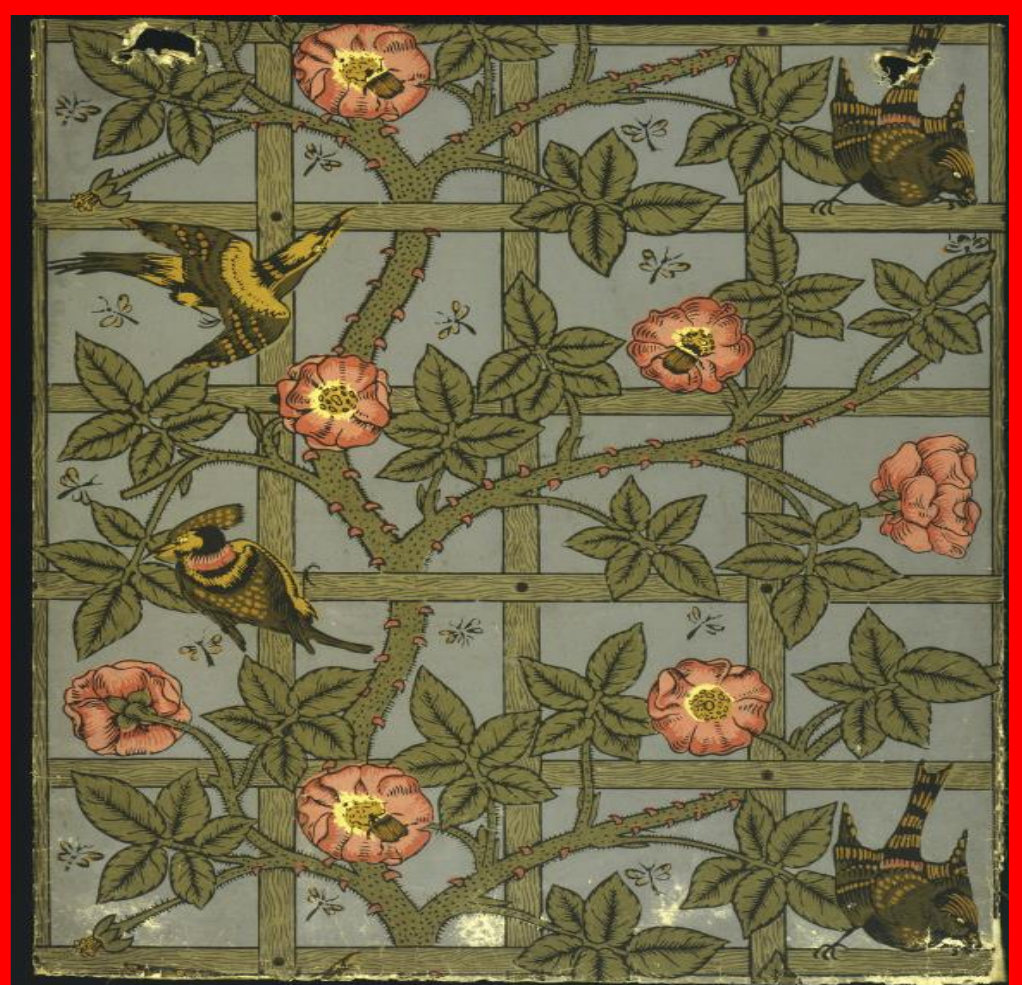


William Morris was born on the 24th March, 1834. He originally was going to become a priest but decided to devote his life to art instead. He became a poet, artist and manufacturer. His career in designing started when he decorated his own house in London. He made designs of floral patterns (patterns inspired by flowers and plants) that could be repeated by block printing techniques on large pieces of paper to make patterned wallpaper. He also made stained glass windows and tapestries. He died 30th October 1896.



The Strawberry Thief.

William Morris is very famous for his wallpaper designs. He created some beautiful designs, the likes of which had never been used before. In fact, wallpaper before his day was quite plain. The design on the right is entitled 'Trellis'.



## Questions to Answer

1. Where did William Morris get his inspiration from?
2. Can you name any other Morris prints?

### Look closely at 'Trellis'

1. How many birds can you see?
2. How many flowers?
3. How many dragonflies?
4. Do you like 'Trellis'?
5. What do you like/dislike about it?
6. If you were printing in the style of Morris, which flowers/plants/insects would you include.



Can you look closely at these designs and give them a 'Title' using what you see in the print for inspiration?



If you were to use the environment around you for inspiration, what might you include in a print you designed?