



West Walker Primary School : SEND Information Report

(SEN Code of Practice 2014)

West Walker Primary is an inclusive school in the East End of Newcastle.

The Special Educational Needs (SEN) and Disabilities Team consists of:

SEND Co-ordinator (SENCo) - Mrs J Stroughair.

1 SEND Teaching Assistant (SENTA) . Mrs H Cowan

SEND Governor . Ms C Dobson

School interventions are monitored by the SENCo and delivered by the SEND team.

We realise that any child may have one distinct area of need or several areas of need. Therefore we provide a personalised support plan for each child determined by their individual needs.

Areas of Need	Associated Difficulties	Interventions	Outside agency involvement.
Communication and Interaction	Speech issues Processing of information. Understanding.	Speech Therapy	*Speech Language Therapy (SLT) Specific Language Impairment Team (SLI Team) Education Psychology
Cognition and Learning	General Learning Difficulties Specific Difficulties such as Dyslexia or Dyscalculia	Success for All Abacus Nessy Number Games Guided Writing Memory Games	SENTASS *Education Psychology (EP)
Social Emotional and Mental Health	ADHD ASD Bullying	Nurture Unit Counselling Anger Management Termly pupil feedback sessions re: school life and the pupils views . to be shared with parents / carers and staff.	*Education Psychology (EP) Child and Young Persons Service (CYPS) Community Paediatrics (CP) Occupational Therapy
Sensory and or Physical	Hearing Impairment Visual Impairment Hyper mobility	Motor Skills groups . gross and fine Write Away Programme	*SENTASS *Occupational Therapy *Physiotherapy CP GP School Health

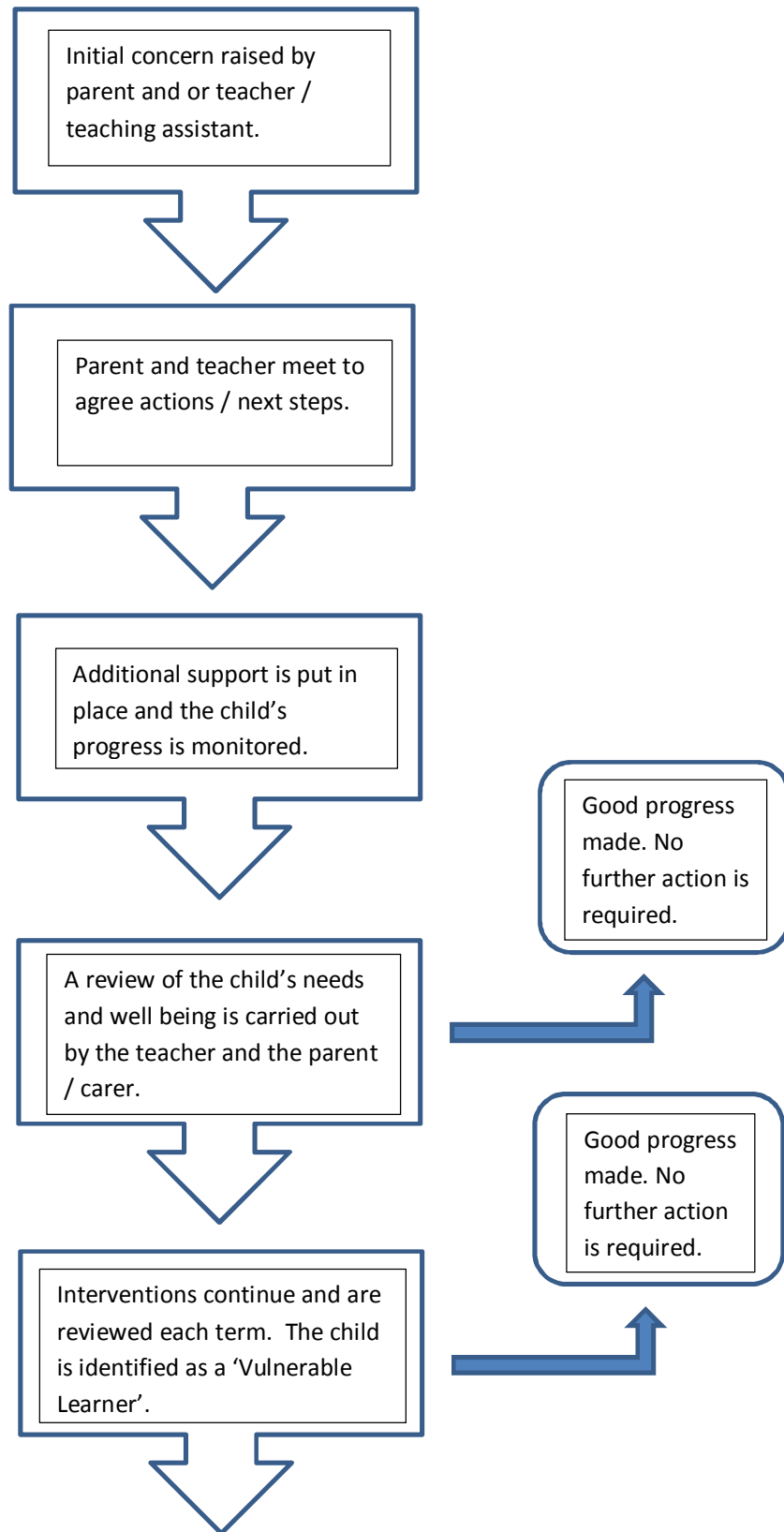
***These outside agencies can provide programmes which a child may need to follow in school with the support of the SEND team.**

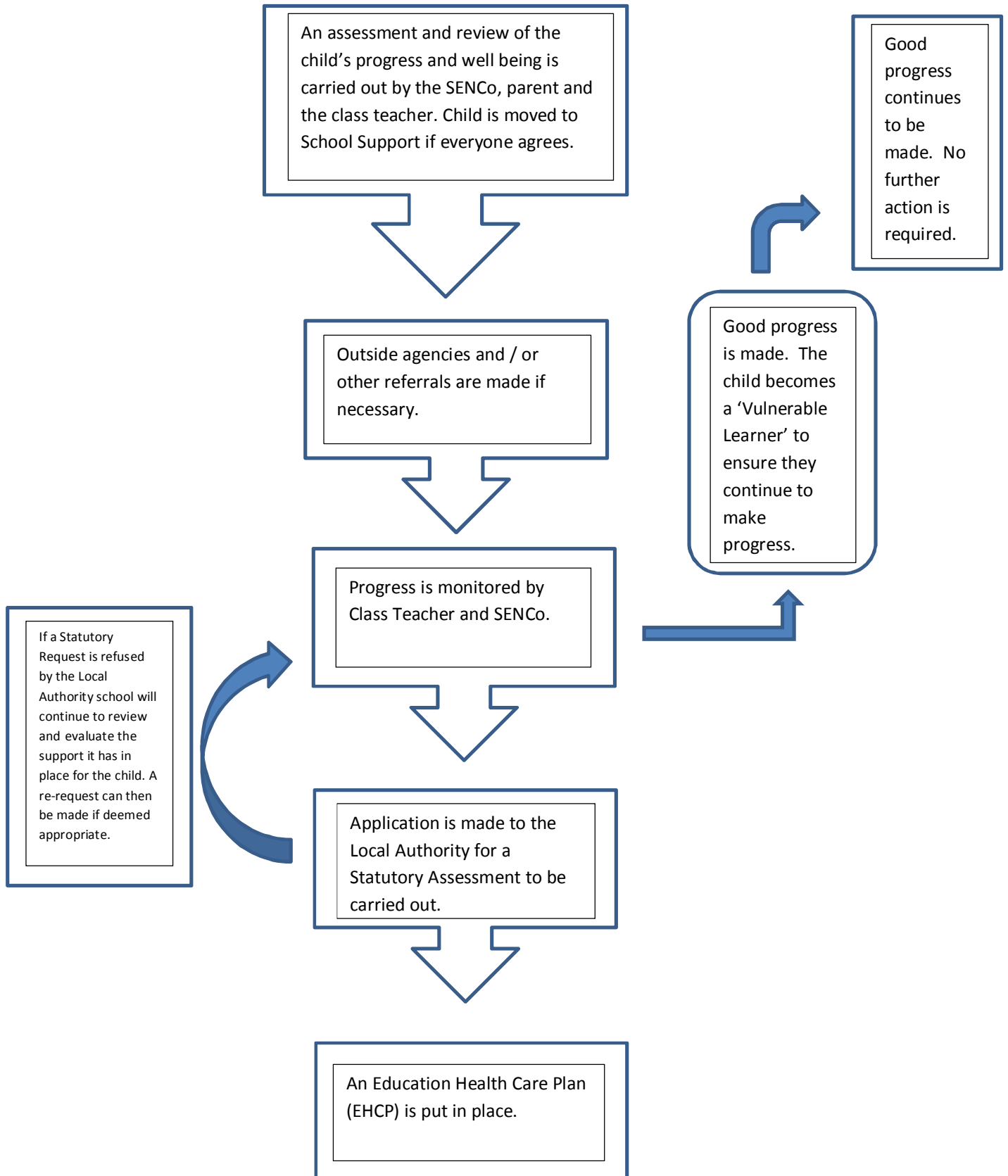
Teaching Assistants are in each class every morning to support the children with their learning in maths, reading, writing and spelling. Our Class Teachers and Teaching Assistants provide additional support for children in all of these learning areas by delivering discrete small group tutoring sessions each day. All our teachers are trained to support children with additional needs and are guided by your child’s Individual Education Plan as to what support your child requires to access learning successfully within the mainstream classroom.

Your child may access one or more interventions depending on what they need at any stage during their time in our school. At West Walker we believe early intervention is vital if a child is to make

progress and enjoy their time in our school. The chart below shows the SEND pathway followed in West Walker.

'Vulnerable Learner' and SEND Pathway for West Walker





Useful information and contacts

Mrs J Stroughair (SENCo) 0191 2624130

Mrs N Draper (Head Teacher) 0191 2624130

Family Advice and Support Team (support families with disabled children / young people from birth to 25 years)

Northern Counties Site, Tankerville Terrace, Jesmond, Newcastle upon Tyne, NE2 3BB

Family Advice Workers: 0191 2818737

Email: information@skillsforpeople.org.uk

Newcastle Special Educational Needs and Disabilities Information, Advice and Support Service (SENDIASS)

Lead Specialist is Judith Lane: 0191 2840480

Email: sendiassadmin@newcastle.gov.uk (ask for Judith Lane or Sarah Francis)

The National Autistic Society

Web: www.autism.org.uk

Email: mailto:nas@nas.org.uk

Autism Helpline

Tel: 0808 8004104 (open 10.00am . 4.00pm Monday to Friday)

Text: 07903 200 200

Newcastle Families Information Service

<http://www.newcastlefis.org.uk/kb5/newcastle/fsd/home.page>

The Complaints Procedure:

Initially an attempt will be made to resolve a complaint about SEND provision at school level within one week of the complaint having first been made. The procedure is firstly that the class teacher attempts to resolve matters, then if required the SENCO and /or Head Teacher becomes involved. If the complaint is unresolved, then the person making the complaint is advised of their rights under Section 23 of the Education reform Act to make a complaint. The Governing Body will consider the complaint, after which, if necessary the NEAT Trust Board will become involved. School will inform parents/carers of the local authority's commissioned independent disagreement resolution service.

(Updated by J. Stroughair Sept 2018 and is due to be reviewed in Sept 2019)