

### Important dates for your diary!

**Thursday 13th February 2020** - 4AK Trip to Theatre Royal  
**Friday 14th February 2020** - Last day of term, break up for half term  
**Monday 17th - Friday 21st February 2020** - **Half Term, School Closed**  
**Monday 24th February 2020** - First day back after half term  
**Wednesday 26 February 2020** - 5JW Big Adventure Trip  
**Tuesday 10th - Thursday 12th March 2020** - Parents Meetings  
**Wednesday 25th March 2020** - **Teachers Training Day - School Closed**



### Attendance

Registration Group	%
E2PB	80.0
N2JB	91.3
RAW	93.5
RJC	90.4
1VT	93.5
1DD	94.3
2AH	93.5
2LK	92.6
3NJ	95.2
3MS	95.0
4AK	91.7
5JW	92.7
5LL	94.2
6FC	94.3
6SE	<b>98.9</b>
<b>Overall</b>	<b>93.4</b>
<b>School Target</b>	<b>96</b>



### Star of the Week!



Class	Child	Award for...
RAW	Destiny	Being a fantastic learner and a real shining light in our class
RJC	Grace	Being a superstar learner and a real shining light
1DD	Thomas	Being a shining light by trying his best in English and Maths
1VT	CJ	Being a shining light in our class
2AH	Scarlett	Being a shining light in our classroom and working hard all week
2LK	Allana	Being a shining light in Maths
3MS	Danelis	Being a shining light in 3MS
3NJ	Harley	Being Miss Johnson's shining light
4AK	Gabriel	Always shining whatever we do, wherever we go
5JW	Lizania	Lizania is our shining light—we love her positive attitude and personality
5LL	Maciej	A shining light of how to be a role model in school.
6FC	Whole Class	Outstanding maturity and nurture while walking Y1 to Church
6SE	Jiayi	Always greeting everyone cheerfully each morning and making the classroom positive and happy.

### Reflection Corner

**A HUGE thank you to all the parents, carers and friends who joined us at Walker Parish Church for our Candelmas Service this week!**

Christians describe Jesus as 'the light of the world'. Let us try to follow the example of Jesus and live our lives as lights shining in the world.

### Wellbeing

Steps to mental wellbeing;

- connect with other people,
- Be physically active,
- Learn new skills,
- Give to others.

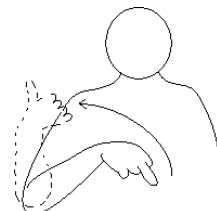
For more information please visit;  
<https://www.nhs.uk/>

### Makaton

Friend



Kind



## EYFS

**Preschool:** Please remember to add photographs of Donnie Duck to Tapestry if he goes home with your child-he has a very special book for you to share and we love to see his adventures!

**Nursery:** All children should have received a new storybook and a bookmark. These books are very precious and must be looked after. They will be changed once a week and this is noted on the bookmark.

**Reception:** We have started our Star Readers so please make sure your child is reading at least 3 times a week to get a prize on a Friday!

## KS1

### Children's Mental Health Week

This week KS1 have spent a lot of time talking about emotions and feelings. We have discussed the importance of talking about how we are feeling and who we can talk to. On Friday, we wore our jumpers and cardigans inside out to promote sharing our feelings rather than keeping everything inside.

### School uniform

Please can we remind all pupils to wear the correct school uniform. We ask that you wear all black trainers and shoes, Yellow polo t-shirt or white shirt and tie (year 5 and 6), black/grey trousers or skirt and a purple jumper or cardigan. Can we also remind pupils that jewellery is not acceptable apart from small studs in ears. Thank you for your co-operation.

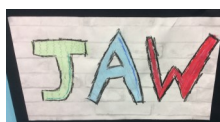
### Parent drop in sessions with Miss Hide

We will be hosting a parent drop in session every Wednesday morning from 9:15am –10am. All parents and carers are welcome. Feel free to pop in and chat with us over a cuppa and some biscuits.



## LKS2

This week Year 3 have been creating their own urban art inspired by Banksy and Soap.



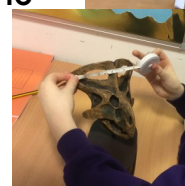
Year 4 have enjoyed their session with Commando Joe, completing challenges in teams.

We have all taking part in mental health activities, discussing the importance of our own mental health.

## UKS2

On Tuesday Y6 had a visit from the 'Dino-Maths' team from the centre for life in Newcastle.

We did lots of measuring and comparing linked to Dinosaurs and fossils.



**This week is Mental Health Awareness Week. We have been discussing what we can do to improve and support our mental health and found out some really useful strategies!**