



**Brampton Village Primary School,
Brampton, Huntingdon,
Cambs. PE28 4RF**

Telephone 01480 375063
office@brampton.cambs.sch.uk



Headteacher: Mr Peter Allen

17th July 2020

Dear Parents/Carers,

We are very much looking forward to welcoming all of the children back in September when we will have 19 classes with over 520 children on roll. We have a number of new staff who will be joining us and already plans are being made across the school to support the children on their return. We know that for many children and parents, the return to school will be an exceptionally anxious time and the mental health and wellbeing of our pupils is our priority.

The Governors met earlier this week to review the timetable and risk assessments in preparation for the full re-opening of the school and these have now been submitted to the Local Authority. We have based our decisions upon what is best for our school and on what has worked well over the past few weeks when more children have been in.

We will be running five 'bubbles' and there will be a staggered return during the first week which will be important as we have not been able to do our usual transition process. Further details about this are included in the table further on. Our 'bubble' arrangement is as follows:

<i>Bubble Number</i>	<i>Year Groups</i>	<i>Number of Classes</i>
1	Brambles	1
2	Reception	3
3	Year 1	3
	Year 2	3
4	Year 3/Year 4	5
5	Year 5/Year 6	5

Arrangements will include:

Cleaning and Hygiene	<p>Children will wash or sanitise their hands when they come in.</p> <p>We will maintain the current hygiene control measures which include:</p> <ul style="list-style-type: none"> - Minimising contact with individuals who are unwell by ensuring that those who have coronavirus (COVID-19) symptoms, or who have someone in their household who does, do not attend school. - Cleaning hands thoroughly more often than usual. - Ensuring good respiratory hygiene by promoting the 'catch it, bin it, kill it' approach. - Maintaining enhanced cleaning, including cleaning frequently touched surfaces, throughout the day. - Minimising contact between individuals and maintain social distancing wherever possible (bubbles and social distancing). - If any child shows symptoms we will contact parents immediately.
Uniform	<p>The children are to wear school uniform (trainers permitted) but on PE days they should come in PE kits to avoid the need to change. Please be prepared for all weathers. You will be notified of PE days at the start of next term.</p>
Lunches	<p>We will be offering a cold menu (sandwiches) for the first three weeks and the children will eat in their classrooms. They can also bring in packed lunches.</p> <p>Arrangements for lunchtimes, including a hot menu, will be reviewed with our Caterers at the start of next term.</p>

Learning

Enjoying

Achieving

Equipment	The school will provide all the equipment, pencils, pens, etc that the children will need so please do not send anything in from home. The children will need their book bags in school as reading books can go home. Once returned to school they will be quarantined for 72 hours before being returned for classroom use.
Classrooms	In Reception and Y1 the children will have access to continuous provision. In Y2-Y6 the children will be sat at their tables in rows, facing forwards as much as possible.
Playtimes and Lunchtimes	Each bubble will have a designated playtime and lunchtime where the children will be able to mix between classes.
Parents/Carers	The plan below shows which gate families should use when bringing children to school. We recognise that there will be many families who have children in different Key Stages so this may not always be possible but we request that everyone maintains and respects social distancing whilst on school premises. Waiting times should be kept to a minimum. Parents and carers must not come into school unless it has been arranged. All enquiries should go through the school office, ideally by email so that contact is minimised. office@brampton.cambs.sch.uk .
Start and end of the day	We have changed the start and finish times on a temporary basis due to the circumstances of the school fully re-opening. Lunchtimes will be shorter so there is no overall impact on the amount of teaching time. The gates will be opened shortly before the first bubble are due in. The children should come straight into school and go their classrooms. At the end of the day the children will be dismissed and should make their way home as quickly as possible. Arrangements will be made with Brampton Kids and Childminders as required.
Clubs	There will be no clubs either before school or after school before half term. We will review this as we receive guidance.
Staff	The measures we have in place are designed to protect both the children and staff. The staff can move between bubbles which means that Midday Supervisors and Support Staff will work with different groups each day. If staff are off due to being unwell please note that this will have an impact on the support that we are able to offer.
Attendance	We will continue to work with families regarding any attendance concerns and please talk to us if you have questions. As schools are formally re-opening the usual rules on school attendance will apply from September, including: <ul style="list-style-type: none"> - Parents' duty to secure that their child attends regularly at school. - Schools' responsibilities to record attendance and follow up absence. - The availability to issue sanctions, including fixed penalty notices in line with local authorities' codes of conduct. This will be reviewed regularly by Governors.
<p>If a child becomes unwell or shows any symptoms of COVID-19 we will contact parents/carers immediately. We will then expect the process for booking a test to be followed. We have to inform the Local Authority and Public Health England of any suspected cases and the outcome of any test. If there is a possible test this may impact on the bubbles with them having to close whilst staff and children isolate.</p> <p>It is essential that we have up to date contact information as soon as possible. It has become clear recently that the school has not been informed of new addresses and phone numbers. Please help us to keep your children safe and if you are not sure please contact the school office.</p>	

Some children will be starting a new Key Stage in September which will mean a change to some of the arrangements.

Children moving from Reception to Year 1

As the children join Year 1 we encourage them to become more independent and this continues as they go through the school. They will be expected to come into school on their own, saying goodbye at the door as they have done in Reception, and then make their way to their cloakrooms and classrooms. A TA will be at the door each morning to speak to if you need to pass a message to the class teacher. At the end of the day they will be dismissed by their teacher and handed over to an adult who has permission to collect them.

In Key Stage 1 the children will still receive a free snack at morning break and are entitled to a free school meal each day.

Children moving from Year 2 to Year 3

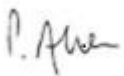
Children in Year 3 make their own way into school. They are no longer provided with a snack at morning break so can bring in something healthy to have, for example, a piece of fresh or dried fruit or vegetables. They also are not eligible for a free school meal so if the children have these they must be paid for through SIMS Pay.

At the end of the day the children are brought onto the KS2 playground by their teacher and dismissed. They are not handed over in the same way as in KS1.

For many the re-establishment of routines will be difficult. This will not just be for school routines but also be for those basic daily life routines, such as sleep and getting up. The key is re-establishing behaviour expectations, how we speak to each other, how we treat each other and our attitude to being in school. The learning will happen when this is all established. Our 6Rs are an integral part of the school's ethos and we ask that you continue to work with us and support us as we all return.

We will write with further details as they become available but if you have any questions please email closure@brampton.cambs.sch.uk.

Yours sincerely,



Mr Peter Allen
Headteacher



Mrs Emma Spencer
Chair of Governors

Timetable for September 2020

	<i>Year Groups</i>	<i>Number of Classes</i>	<i>Start Time</i>	<i>End Time</i>
Monday 7 th September	Brambles	9-11.30am and 12.30-3pm 15min walk through for each child and one parent.		
	Reception	Zoom meetings		
	Year 1	3	9.00am	3.05pm
	Year 3	5	9.00am	3.10pm
Tuesday 8 th September	Brambles	9-11.30am 12.30-3pm AM Session: Children come in on their own for 30mins in small groups. PM Session: 15 min walk through for those who have not managed to book in		
	Reception	Zoom meetings		
	Year 1	3	9.00am	3.05pm
	Year 3	5	9.00am	3.10pm
	Year 5	5	8.55am	3.15pm
Wednesday 9 th September	Brambles	9-11am and 12-3pm Children come for one hour in small groups		
	Reception	Zoom meetings		
	Year 1	3	9.00am	3.05pm
	Year 2	3		
	Year 3	5	9.00am	3.10pm
	Year 4			
Year 5	5	8.55am	3.15pm	
Thursday 10 th September	Brambles	9-11.30am and 12.30-3pm Children come for an hour and a half in small groups		
	Reception	Zoom meetings		
	Year 1	3	9.00am	3.05pm
	Year 2	3		
	Year 3	5	9.00am	3.10pm
	Year 4			
Year 5	5	8.55am	3.15pm	
Year 6				
Friday 11 th September	Brambles	1	9-11.30am and 12.30-3pm Children come for two hours in small groups	
	Reception	Zoom meetings		
	Year 1	3	9.00am	3.05pm
	Year 2	3		
	Year 3	5	9.00am	3.10pm
	Year 4			
Year 5	5	8.55am	3.15pm	
Year 6				

Learning

Enjoying

Achieving

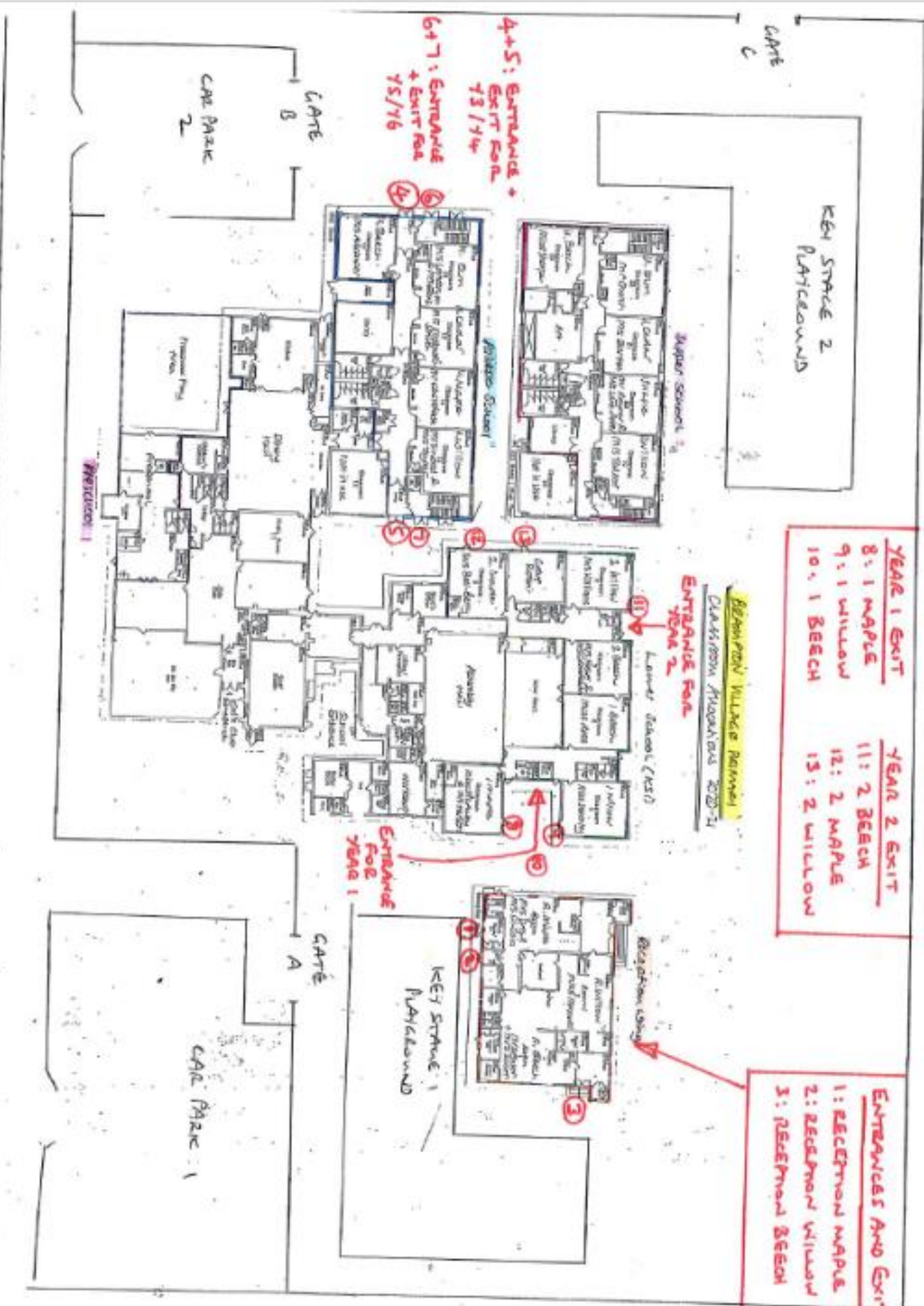
Week beginning 14 th September	Brambles	1	9.00am	3.00pm
	Reception	3	9.15am	2.45pm
	Monday 14 th - Wednesday 16 th September	Birthdays March to August 9.15am – 2.45pm (Full Time including lunch)		Birthdays September- February Not due to start yet
	Thursday 17 th and Friday 18 th September	Birthdays March to August Continue to attend all day		Birthdays September- February 9.15am – 2.45pm (Full Time including lunch)
	From Thursday 17 th September all children will have started school full time. Most children will be ready for this, however if parents would prefer their child to have a more gradual start at school they should contact the school.			
	Year 1	3	9.00am	3.05pm
	Year 2	3		
	Year 3 Year 4	5	9.00am	3.10pm
	Year 5 Year 6	5	8.55am	3.15pm

Week beginning Monday 21 st September	Brambles	1	9.00am	3.00pm
	Reception	3	9.10am	2.55pm
	Year 1	3	9.00am	3.05pm
	Year 2	3		
	Year 3 Year 4	5	9.00am	3.10pm
	Year 5 Year 6	5	8.55am	3.15pm

Although a timetable is in place arrangements will need to be reviewed regularly by the Senior Leadership Team. This is to ensure that all necessary measures are in place to ensure the wellbeing of children and staff in line with our Risk Assessment.

The staggered times will be reviewed each week as we want to move to the usual start and finish times as soon as it is safe to do so. We will keep you updated as appropriate.

Year Group	Entrance Gate	Exit gate	
Reception	A	A	We recognise that some families will also access the school site though Gate C and will have siblings to bring who are in other year groups.
Year 1	A	A	
Year 2	A	A	
Y3/Y4	B	B	
Y5/Y6	B	B	



- | YEAR 1 EXIT | YEAR 2 EXIT |
|-------------|--------------|
| 8: 1 MAPLE | 11: 2 BEECH |
| 9: 1 WILLOW | 12: 2 MAPLE |
| 10: 1 BEECH | 13: 2 WILLOW |

- ENTRANCES AND EXITS**
- 1: RECEPTION MAPLE
 - 2: RECEPTION WILLOW
 - 3: RECEPTION BEECH

How do we all work together to prevent ourselves from getting COVID-19?

Coronavirus is still a really serious issue - it hasn't gone away, even as lockdown measures are being gradually relaxed.

Keep 2 METRES APART from anyone **NOT** in your household

WHERE THIS IS NOT POSSIBLE, KEEP AT LEAST 1 METRE APART AND TAKE PRECAUTIONS such as wearing a face mask and not speaking face to face.



!

A 'household' is people who live together in the **SAME** house **AT ALL TIMES**

When you're INSIDE

- Only people from **ONE OTHER HOUSEHOLD** can meet with you inside your home

When you're OUTSIDE

- Any number of people from **TWO HOUSEHOLDS** can meet outside
- **UP TO SIX OTHER PEOPLE** from **DIFFERENT HOUSEHOLDS** can meet up outside

Keep 2 METRES APART - 1 metre with precautions outlined above

Caring for Cambridgeshire and Peterborough




Continue to work from home where you can



Continue good hand hygiene



Stay home if you have symptoms



Wear a face covering when travelling on public transport and in shops

What everyone can do to protect themselves and each other is to continue to follow the clear public health advice.

! For further updates and advice please check our websites which will be regularly updated www.cambridgeshire.gov.uk www.peterborough.gov.uk and www.gov.uk

What happens if I have one or more symptoms of COVID-19?

The symptoms of COVID-19 are:



A high temperature



A new continuous cough



A change to or loss of your sense of taste and smell.

If you have ANY symptoms of COVID-19 you should follow these steps

1 Start isolating at home
You for 7 days and your household for 14 days



2 Book a test
NHS.uk/coronavirus or call 119



3

NEGATIVE
for COVID-19



If you test negative you may still need to isolate - check here for details www.nhs.uk/conditions/coronavirus-covid-19/testing-and-tracing/what-your-test-result-means/

POSITIVE
for COVID-19



Within 24hrs you'll be contacted by **NHS Test and Trace** by phone, text or email and asked to share who you have been in close contact with using a weblink or the phone

For help and advice if you're isolating, please check our websites