

Thursday 5th September 2019 Number 1, Term 1

WELCOME BACK TO SCHOOL

Dear Parents/Carers

Welcome to everyone whether you are returning or joining new to the school. There is a lot of information on this newsletter regarding expectations throughout the school so please take time to read it all.

We are pleased to welcome Mrs Reynolds back to the junior office, part time and the following new staff:

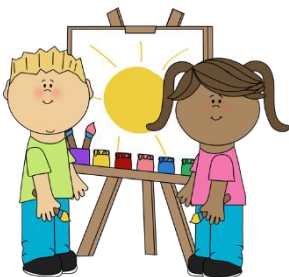
Miss Smith - Firefly

Mr Stinchcombe –Cover Supervisor

Mrs Eskleaf- EAL support LSA

I'm sure you will give them a lovely, warm Holymead welcome.

Curriculum Overview



Lots of parent/carers like to know what their children will be learning about in the coming year so we have published our Curriculum Overview on the school website. You can see at a glance what the children in each year group will be studying in each subject each term.

There are lots of lovely pictures to give an idea of some of the exciting things the children do in school. Please take a look on the Holymead Primary home page.

WAS YOUR CHILD BORN BETWEEN 1st SEPTEMBER 2015 AND 31st AUGUST 2016?



If they were, you need to be applying for a school place for September 2020. If you know of friends with nursery age children, please check they have applied online to the local authority. Even if you have older children at this school you must still apply for a reception place using the online Bristol form.

Nurture, Inspire, Achieve

What's Happening

New Reception Parent/Carer Curriculum Meeting 25th September.

We will be holding a curriculum meeting at 3.20pm in the infant hall for parents/carers to come and find out more about what your children will be learning this year in school. There will be a crèche in Robin.

Y2 Reading Meeting 23rd September 3.20pm in the Hall. There will be a crèche.

Y1 Phonics Meeting 30th September 3.20pm in the Hall. There will be a crèche.



Times of the School Day – the school buildings open at 8.50am for the children to be registered at **9am**. Infant children should be handed over at the OUTSIDE classroom door

from parents to teachers. Junior children may be left in the junior playground when a member of staff is on duty i.e. at 8.40am. Home time is **3.10pm for infants and 3.20pm for juniors**. The school office is open from 8.40am if you need to call in. Please do not wait inside the buildings before or after school unless you are queuing for the office.



The Bristol Post usually come early to take a photo of new reception children so please make sure you have filled in your slip saying whether you give permission or

not for your child to appear in the paper. Pupils are not normally named on this occasion.



Rules and Safety

As the new school year starts I would like to inform parents about some of the rules around school.

Bikes and scooters and any other wheeled transport may not be ridden in the school grounds. We have found it is too dangerous to allow children of any age to use wheeled transport round school. Scooters must be taken home, not left in school, as we do not have the capacity to store them. Children in Upper KS2 (Y5 and 6) may park bikes in the bike sheds if parents fill in the cycling to school agreement. Bikes are left at their owner's risk.

Climbing Equipment is not for use by children before or after school hours on either site.

Dogs are not allowed on the school premises at all (except guide/working dogs). Even if you know they are gentle pets a small child can still find them threatening.

The white lines on the infant site are painted round the playground to keep your children safe. Please remind your children they are not allowed to go up the grass banks or the new path or the concrete slopes before or after school. This includes pre-schoolers as playing in these areas can be dangerous.

Drains and drain covers - There are many drains and drain covers around school which mean there are many holes so please be careful if you wear stilettos or narrow heeled footwear as narrow heels can go through the holes.

Toys, games, pencil cases, mobile phones etc are not allowed in school as they can cause arguments and lead to problems. The school accepts no responsibility for loss or damage to any items brought from home.

No Smoking- the school and grounds are all non-smoking areas and this includes e-cigarettes or vaping.



Punctuality

Following discussions governors have agreed to change the time the school registers close in a bid to decrease the number of pupils arriving late and disrupting the beginning of morning lessons.

New times from September 2019

The register will be taken at 9am.

Any pupils arriving after 9am but before 9.15am will be registered as 'L' for late. This counts as an attendance mark.

Pupils arriving after 9.15am will be marked 'U' for unauthorised.

Where the school doesn't receive a message for an absence then pupils will be marked 'O'. This is also an unauthorised absence mark.

Persistent unauthorised absences ('U' or 'O') can lead to a penalty notice (fine) being issued.

Governors will review this policy change in March 2020, in readiness for any further changes to timings



Friends' News- Our Holymead Friends' Group have raised an amazing £2,787.43 from the Summer Fayre and raffle and £433.18 from the coin weigh-in. Thank you to everyone that helped. It could not have been done without you!

Friends' Coffee Morning is being held on Friday 27th September at 9am on the infant site - All parents in both KS1 and KS2 (infant and junior sites) are welcome to come along, especially our new Reception parents. We always need new members to keep joining the Friends' Group and get involved in organising social and fund raising events. We will be looking for new people to help by taking up positions in the group to ensure it runs smoothly. Support is always on hand. Meetings are held during and after school on the infant and junior sites and pre-schoolers are welcome. Watch this space for further information/dates.

Outdoor Equipment! Please note the outdoor equipment on both sites is for use during school time only and children should not be playing on it before or after school. Thank you.





Infant Bedtime Story

13th November 4.30-5.30pm

All infant children are invited to return to school in their pyjamas to listen to bedtime stories and have a hot

chocolate and biscuit in the infant hall. There will be a small charge with any profit donated to charity.

Details to follow.



Sad News. We are saddened to report the death of Mrs Moira Waite during the holidays. Mrs Waite worked as an smsa on the infant site for seven and a half years and will be greatly missed by staff and children. Our sympathies go out to her family at this difficult time.



Spellings

This year's KS2 Spelling, Punctuation and Grammar (SPAG/EGPS) results were well above the national average and we feel the support parents have given

their children in learning their spellings has played an important part in making sure children are ready for these harder tests.

All children will be tested on their spellings in September. There are spelling lists on the school website. Please make sure your child practises their year group spellings. If they struggle, then limit your child to one or two sections to go over and over. If they know them all then your child can learn the next year's list.

Times tables are also on the website for children to practise and learn off by heart. Keep returning to the lists regularly and testing your child. I can't

emphasise enough the difference knowing your times tables makes. It is those children who have learnt them that speed through their maths work in class.



Holidays in term time. It is very unlikely holidays will be authorised as circumstances have to be really exceptional. AS A GUIDELINE PARENTS SHOULD ASSUME APPLICATIONS FOR LEAVE OF ABSENCE FOR A HOLIDAY WILL NOT BE AUTHORISED AND YOU ARE LIKELY TO BE FINED FOR ANY UNAUTHORISED ABSENCE OVER 4 DAYS (8 SESSIONS).

Fines start at £60 per child, per responsible adult. For example, if you have 2 children in school and there are mum and dad sharing responsibility for the children then you will be fined £240. Fines rise if they are not paid on time. Please fill in a leave of absence form in advance of taking your children out. Note, you can still be fined if you take an unauthorised holiday but don't fill out a form.



Year 4 swimming commences next Thursday (12th September).

Fox Class will be swimming first and we ask that they come into school for registration at 8.35am, in order to leave school at 8.45am prompt.

Flamingo and Falcon Class will follow in turn, during the normal school day.

All children will need a towel and swimming costume or trunks - **no long Bermuda shorts or bikinis please**. All long hair will need to be tied up and earrings removed or covered. The children are allowed goggles if they wish. We strongly advise that parents provide swimming hats as this keeps their hair drier.

Each class will need parent helpers to assist with travelling on the coach and changing. This takes about 1 hour including the lesson. Please would you see your child's class teacher as soon as possible if you can help.

All helpers will need to have a DBS check in place.

Please can we remind parents to make their swimming transport payments online, via Parentmail. Thank you.



Up to date Data, held by the school.

Please can we ask all parents/carers to keep the school updated with their current telephone numbers (mobile, work, home),

addresses and any other relevant information (such as emergency contacts, dietary needs of children and medical needs that staff should be aware of).

It is important that the school holds this information and that it is current and up to date, as should there be an emergency in school we will be able to make contact with the relevant person as quickly as possible. We also prefer to send letters/correspondence via email (ParentMail) where possible.

Thank you.



School Uniform. We have moved to all uniform being ordered online. We stock different sizes of sweat shirts etc so you can try on a sample to get the right size before ordering. If you don't have

internet access our office staff are happy to help you with ordering uniform.

Polo Shirts: These can either be plain white or dark purple in colour.

Shoes: Children need to have black school shoes for school.

Please note trainers, black jeans, leggings and hooded tops must not be worn in school.

PE kit: is a purple tee-shirt and black shorts in a purple dap bag. Black or white tee shirts and shorts are an acceptable alternative but no club football kits etc. ALL UNIFORM, INCLUDING PE KITS MUST BE LABELLED CLEARLY.

Back Packs are not allowed on the infant site as space is very limited.

Pencil Cases: just a reminder that pupils are NOT allowed to bring pencils and pencil cases to school. The only exception to this is in Y6 where pupils are getting ready for using their own pencil cases and equipment in secondary school.

No toys or games are allowed in school.



Term Dates 2019- 2020

Term 1

(INSET 2nd, 3rd Sept.)

Wed 4th Sept- school year starts for KS1 and KS2 (new Y1 to Y6)

Thurs 5th Sept- New intake Reception start.

Fri 25th October- last day of Term 1.

Term 2

Mon 4th Nov- Thurs 19th Dec 2019 (INSET 20th Dec)

Term 3

Mon 6th Jan 2020 – Thursday 13th Feb 2020 (INSET 14th Feb)

Term 4

Mon 24th Feb- Fri 3rd April 2020

Term 5

Mon 20th April- Fri 22nd May 2020

Term 6

Mon 1st June- Friday 17th July 2020 (INSET Mon 20.7.20)



Governors' Corner.

Have you seen the new carpet in the junior building that replaces the worn out blue one? We have a lovely new purple carpet throughout the corridors. Falcon Class also had a make- over during the holidays and looks fresh and inviting for the new Y4 pupils.

There is a new office area on the junior site. To improve security parents will now need to enter and exit via the main entrance on Wick Road rather than through any of the back doors. Please do not be offended if you are challenged on entering through the back doors as these are now for exiting only.

JUST A LITTLE Reminder

Please remember hair styles and accessories should be sensible and conducive to learning. Hair should be a natural colour with no shocking colours or bleaching. Small bows are acceptable, large ones get in the way and distract other children from their learning. Mobile phones are banned at school. Please follow the policy and ask for permission slips at the office if you need your child to bring a phone to school. The school accepts no responsibility for items brought from home.



Reminder to Parents: please can we remind parents to ensure that all dinner money accounts (via Parentmail) and breakfast club and afterschool club accounts (Liburcure) are either kept in credit or at zero. Dinners and services MUST be paid for in ADVANCE rather than in arrears.



Please note the school tries to pass on information it considers may be helpful or of interest to parents in this newsletter. We do not necessarily endorse or check the security and safety of the services on offer. Parents need to satisfy themselves that they are happy to leave their children at any of the clubs and services advertised which are not based on the Holymead School sites. Holymead School carries out DBS checks on clubs who have hire agreements with this school.

Yours sincerely
Ms Kate Slatcher



Holymead Primary (Infant Site)
Hollywood Road, Brislington, Bristol BS4 4LE.
T: 0117 3772381 – F: 0117 3772382
E: office@holymeadprimary.co.uk
www.holymeadp.bristol.sch.uk

Holymead Primary (Junior Site)
Wick Road, Brislington, Bristol, BS4 4HB
T: 0117 9030377 - F: 0117 9030378
E: office@holymeadprimary.co.uk
www.holymeadp.bristol.sch.uk

Rights Respecting Schools Article 13: Children have the right to get and to share information