

# Wingrove Primary School

## What we are covering this term:

### Topics:

This half term our topic is 'What makes us special?' We are celebrating differences and looking at what makes us unique. Next half term our topic is 'Is there magic in the forest?'

### Literacy:

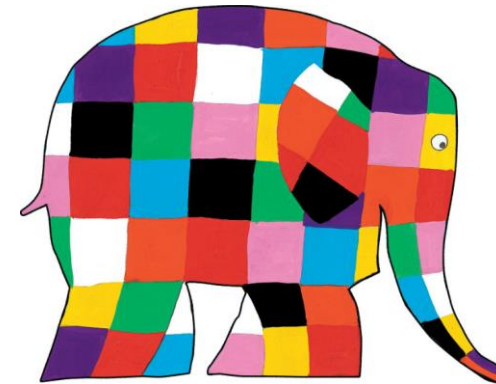
- Ask questions to extend knowledge and understanding
- Composing sentences orally before writing them
- Write a series of sentences with a capital letter, finger space and a full stop
- Read tricky words
- Read words phonetically
- Form letters correctly and sitting letters on the line
- Develop their comprehension of what they have read and predicting what may happen next

### Numeracy:

- Addition and subtraction within 20
- Place value with number within 50
- Counting in 2, 5 and 10
- Measuring length and height
- Measuring volume and weight

### Science:

- Planning investigations
- Testing whether materials are waterproof
- Seasonal changes and plant growth



## Term Dates

Tuesday 7<sup>th</sup> January – Friday 14<sup>th</sup> February  
Monday 24<sup>th</sup> February – Thursday 2<sup>nd</sup> April

## Training Days

Monday 6<sup>th</sup> January  
Friday 3<sup>rd</sup> April

**Spring Term, Year 1  
2019 - 2020**

## Welcome to Year 1

The members of our teaching team are:

**Phase Leader:** Mr Hields

**Class Teachers:** Mrs Jobson  
Mr Henderson

**Support Staff:** Mrs Robson-Bain  
Ms Akhtar

## Organisation

- Doors open at **8:45am** and close at **8:55am**.
- Late arrivals must report to the office.
- **Lunch time** is from **12:00pm** until **1:00pm**
- **Home time** is at **3:15pm** when children are collected from the classroom.

P.E. Day is **Tuesday**. Children need to come in wearing their red P.E t-shirt, black jogging bottoms and a hoody. They also need to wear suitable footwear e.g. trainers

**Children should not wear jewellery including earrings.**

All children need a pair of wellies which are to be kept in school to wear when going to forest school.

Please encourage your child to be independent when dressing and undressing at home to help them when in school.

## Dates for your Diary

Tuesday 24<sup>th</sup> and Wednesday 25<sup>th</sup> March – **Parents' Evenings.**

Wednesday 18<sup>th</sup> March and Thursday 26<sup>th</sup> March – **Afternoon tea** in the hall (tickets on sale in March)

## Homework

Children should bring their reading folders into school **every day**. Please ensure their reading book and reading record are in the folder so we can change your child's book. Please practise reading with your child a little every day as this will really help them develop their confidence and fluency in reading.

The children have access to the **Mathletics** and **Active Learn** websites which are great fun and will support their learning. Please support your child by helping them to log on to these programs and please see class teachers if you need support with passwords.

Homework projects are set based around our class topic. These are meant to be fun and a great way for your child to showcase their creativity and talk about what they are learning about in school. Please work together with your child to complete these and encourage them to have input in the end product.