

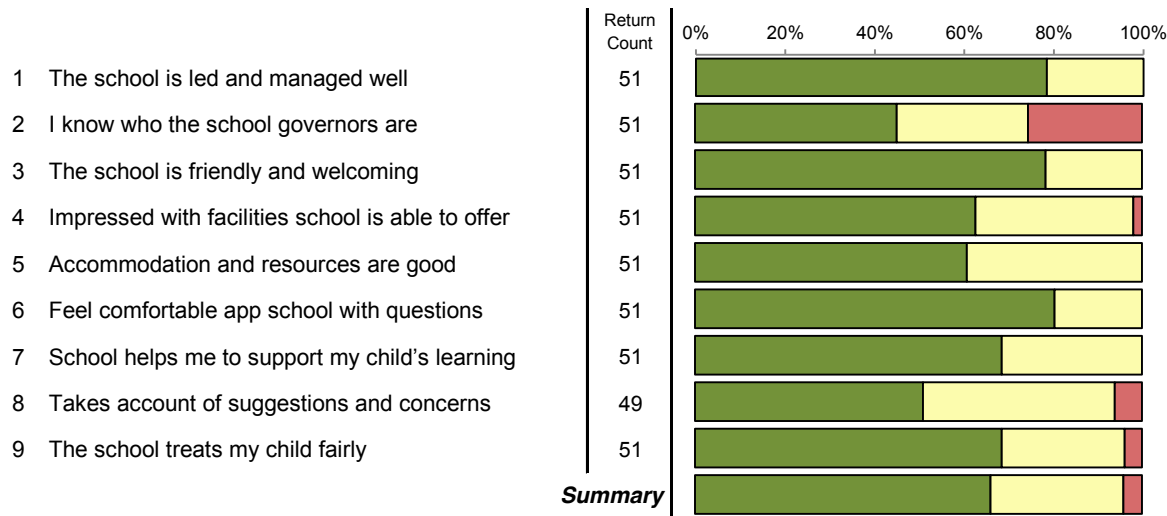
Survey: Parent/Carer Perception of School - February 2016

Report By: **All Respondents**

Difference from: All Respondents  
 Ext. Benchmark: 27,793 parents from 204 primary schools within the 'All Data' QDP national benchmark.  
 Report style: Combined Graphical, Rated, Questionnaire order  
 Filtered by: All Respondents  
 Respondents: 51



**The School and its Ethos**



Strongly Agree	Agree	Disagree	Strongly Disagree	Not Answered
40	11	0	0	0
78.4%	21.6%	0.0%	0.0%	0.0%
23	15	8	5	0
45.1%	29.4%	15.7%	9.8%	0.0%
40	11	0	0	0
78.4%	21.6%	0.0%	0.0%	0.0%
32	18	1	0	0
62.7%	35.3%	2.0%	0.0%	0.0%
31	20	0	0	0
60.8%	39.2%	0.0%	0.0%	0.0%
41	10	0	0	0
80.4%	19.6%	0.0%	0.0%	0.0%
35	16	0	0	0
68.6%	31.4%	0.0%	0.0%	0.0%
25	21	3	0	2
49.0%	41.2%	5.9%	0.0%	3.9%
35	14	2	0	0
68.6%	27.5%	3.9%	0.0%	0.0%
302	136	14	5	2
65.8%	29.6%	3.1%	1.1%	0.4%

Rating	Difference	Agree%	Distance Travelled	Quartile	External Benchmark
89		100		A	+12
60		75		A	+25
89		100		B	+4
80		98		A	+7
80		100		A	+6
90		100		A	+10
84		100		A	+6
72		94		B	+3
82		96		B	+2
81		96		A	+9

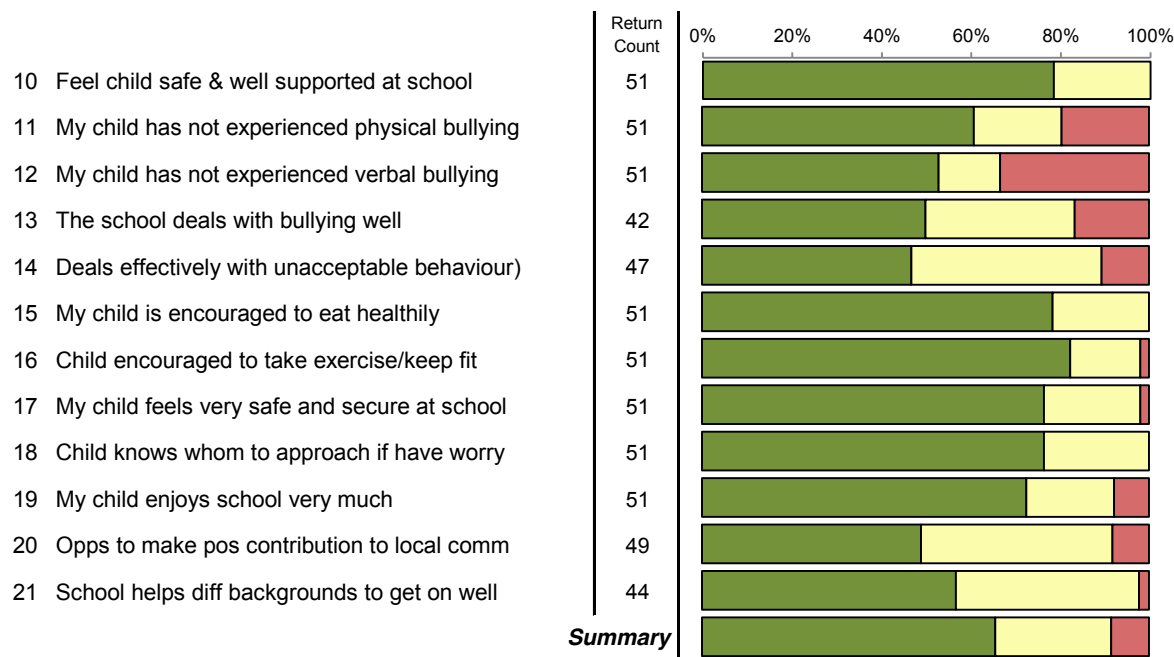
Survey: Parent/Carer Perception of School - February 2016

Report By: **All Respondents**

Difference from: All Respondents  
 Ext. Benchmark: 27,793 parents from 204 primary schools within the 'All Data' QDP national benchmark.  
 Report style: Combined Graphical, Rated, Questionnaire order  
 Filtered by: All Respondents  
 Respondents: 51



**Wellbeing**



	Strongly Agree	Agree	Disagree	Strongly Disagree	Not Answered
10	40	11	0	0	0
11	31	10	6	4	0
12	27	7	12	5	0
13	21	14	6	1	9
14	22	20	4	1	4
15	40	11	0	0	0
16	42	8	1	0	0
17	39	11	1	0	0
18	39	12	0	0	0
19	37	10	4	0	0
20	24	21	4	0	2
21	25	18	1	0	7
<b>Summary</b>	<b>387</b>	<b>153</b>	<b>39</b>	<b>11</b>	<b>22</b>

Rating	Difference	Agree%	Distance Travelled	Quartile	External Benchmark
89		100		A	+6
71		80		C	-2
60		67		C	-4
67		83		C	=
68		89		C	-2
89		100		A	+13
90		98		A	+12
87		98		A	+4
88		100		A	+10
82		92		B	+2
70		92		B	+2
77		98		B	+3
79		92		B	+4

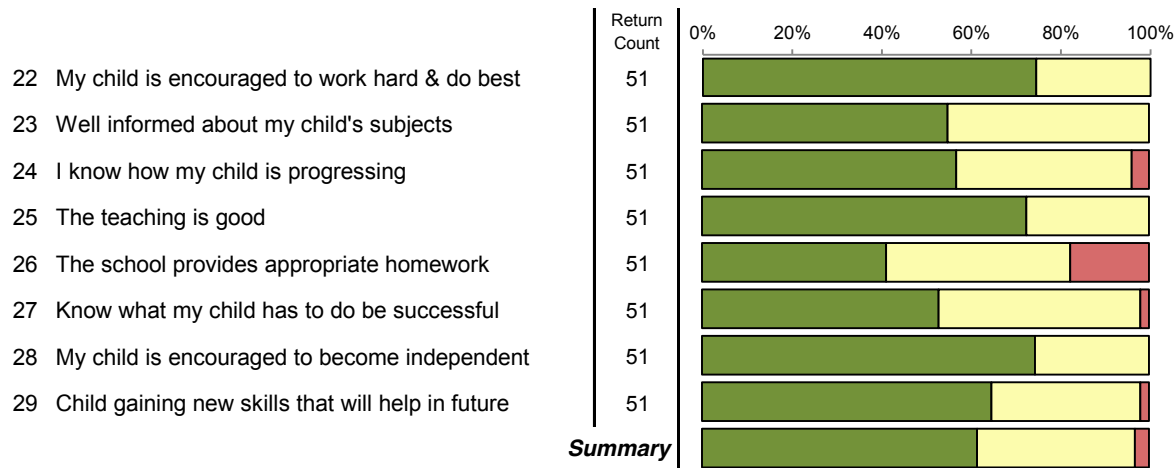
Survey: Parent/Carer Perception of School - February 2016

Report By: **All Respondents**

Difference from: All Respondents  
 Ext. Benchmark: 27,793 parents from 204 primary schools within the 'All Data' QDP national benchmark.  
 Report style: Combined Graphical, Rated, Questionnaire order  
 Filtered by: All Respondents  
 Respondents: 51



**Teaching and Learning**



Strongly Agree	Agree	Disagree	Strongly Disagree	Not Answered
38 74.5%	13 25.5%	0 0.0%	0 0.0%	0 0.0%
28 54.9%	23 45.1%	0 0.0%	0 0.0%	0 0.0%
29 56.9%	20 39.2%	2 3.9%	0 0.0%	0 0.0%
37 72.5%	14 27.5%	0 0.0%	0 0.0%	0 0.0%
21 41.2%	21 41.2%	8 15.7%	1 2.0%	0 0.0%
27 52.9%	23 45.1%	1 2.0%	0 0.0%	0 0.0%
38 74.5%	13 25.5%	0 0.0%	0 0.0%	0 0.0%
33 64.7%	17 33.3%	1 2.0%	0 0.0%	0 0.0%
251 61.5%	144 35.3%	12 2.9%	1 0.2%	0 0.0%

Rating	Difference	Agree%	Distance Travelled	Quartile	External Benchmark
87		100		B	+3
77		100		A	+8
76		96		B	+3
86		100		A	+4
62		82		C	-5
75		98		B	=
87		100		A	+6
81		98		B	+1
79		97		B	+3

Survey: Parent/Carer Perception of School - February 2016

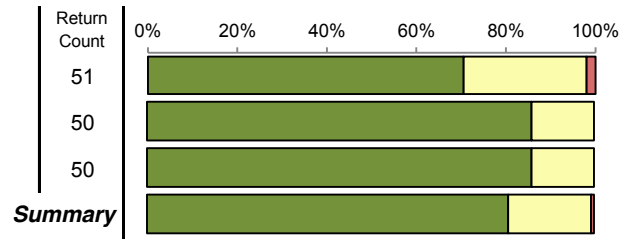
Report By: **All Respondents**

Difference from: All Respondents  
 Ext. Benchmark: 27,793 parents from 204 primary schools within the 'All Data' QDP national benchmark.  
 Report style: Combined Graphical, Rated, Questionnaire order  
 Filtered by: All Respondents  
 Respondents: 51



**Overall Satisfaction**

- 30 My child is making good progress
- 31 I am satisfied with the choice of this school
- 32 I would recommend the school to a friend



Strongly Agree	Agree	Disagree	Strongly Disagree	Not Answered
36	14	1	0	0
70.6%	27.5%	2.0%	0.0%	0.0%
43	7	0	0	1
84.3%	13.7%	0.0%	0.0%	2.0%
43	7	0	0	1
84.3%	13.7%	0.0%	0.0%	2.0%
122	28	1	0	2
79.7%	18.3%	0.7%	0.0%	1.3%

Rating	Difference	Agree%	Distance Travelled	Quartile	External Benchmark
84		98		B	+3
93		100		A	+10
93		100		A	+10
90		99		A	+8

Survey: Parent/Carer Perception of School - February 2016

Report By: **All Respondents**

Difference from: All Respondents

Ext. Benchmark: 27,793 parents from 204 primary schools within the 'All Data' QDP national benchmark.

Report style: Combined Graphical, Rated, Questionnaire order

Filtered by: All Respondents

Respondents: 51



Gender of Parent/Carer		
Male	4	7.8%
Female	45	88.2%

Ethnicity		
Prefer not to answer	2	3.9%
Black African	0	0.0%
Black Caribbean	0	0.0%
Black other	0	0.0%
Bangladeshi	0	0.0%
Chinese	0	0.0%
Indian	0	0.0%
Pakistani	0	0.0%
White	47	92.2%
Other	0	0.0%

Do you have a Disability		
Disability - Yes	1	2.0%
No	48	94.1%

Gender of Your Child		
Boy	30	58.8%
Girl	19	37.3%

In which Year is your child		
Reception	9	17.6%
Year 1	6	11.8%
Year 2	8	15.7%
Year 3	5	9.8%
Year 4	7	13.7%
Year 5	6	11.8%
Year 6	7	13.7%

Is your child SEN registered		
Is your child SEN registered - Yes	1	2.0%

Survey: Parent/Carer Perception of School - February 2016

Report By: **All Respondents**

Difference from: All Respondents  
 Ext. Benchmark: 27,793 parents from 204 primary schools within the 'All Data' QDP national benchmark.  
 Report style: Combined Graphical, Rated, Questionnaire order  
 Filtered by: All Respondents  
 Respondents: 51



**The School and its Ethos**

	Return Count	Strongly Agree	Agree	Disagree	Strongly Disagree	Not Answered	Mean Score	Reverse Mean Score	Agree%
1 The school is led and managed well	51	40	11	0	0	0	1.2	3.8	100
2 I know who the school governors are	51	23	15	8	5	0	1.9	3.1	75
3 The school is friendly and welcoming	51	40	11	0	0	0	1.2	3.8	100
4 Impressed with facilities school is able to offer	51	32	18	1	0	0	1.4	3.6	98
5 Accommodation and resources are good	51	31	20	0	0	0	1.4	3.6	100
6 Feel comfortable app school with questions	51	41	10	0	0	0	1.2	3.8	100
7 School helps me to support my child's learning	51	35	16	0	0	0	1.3	3.7	100
8 Takes account of suggestions and concerns	49	25	21	3	0	2	1.6	3.4	94
9 The school treats my child fairly	51	35	14	2	0	0	1.4	3.6	96

**Wellbeing**

	Return Count	Strongly Agree	Agree	Disagree	Strongly Disagree	Not Answered	Mean Score	Reverse Mean Score	Agree%
10 Feel child safe & well supported at school	51	40	11	0	0	0	1.2	3.8	100
11 My child has not experienced physical bullying	51	31	10	6	4	0	1.7	3.3	80
12 My child has not experienced verbal bullying	51	27	7	12	5	0	1.9	3.1	67
13 The school deals with bullying well	42	21	14	6	1	9	1.7	3.3	83
14 Deals effectively with unacceptable behaviour)	47	22	20	4	1	4	1.7	3.3	89
15 My child is encouraged to eat healthily	51	40	11	0	0	0	1.2	3.8	100
16 Child encouraged to take exercise/keep fit	51	42	8	1	0	0	1.2	3.8	98
17 My child feels very safe and secure at school	51	39	11	1	0	0	1.3	3.7	98
18 Child knows whom to approach if have worry	51	39	12	0	0	0	1.2	3.8	100
19 My child enjoys school very much	51	37	10	4	0	0	1.4	3.6	92

Survey: Parent/Carer Perception of School - February 2016

Report By: **All Respondents**

Difference from: All Respondents

Ext. Benchmark: 27,793 parents from 204 primary schools within the 'All Data' QDP national benchmark.

Report style: Combined Graphical, Rated, Questionnaire order

Filtered by: All Respondents

Respondents: 51



### Wellbeing

	Return Count	Strongly Agree	Agree	Disagree	Strongly Disagree	Not Answered	Mean Score	Reverse Mean Score	Agree%
20 Opps to make pos contribution to local comm	49	24	21	4	0	2	1.6	3.4	92
21 School helps diff backgrounds to get on well	44	25	18	1	0	7	1.5	3.5	98

### Teaching and Learning

	Return Count	Strongly Agree	Agree	Disagree	Strongly Disagree	Not Answered	Mean Score	Reverse Mean Score	Agree%
22 My child is encouraged to work hard & do best	51	38	13	0	0	0	1.3	3.7	100
23 Well informed about my child's subjects	51	28	23	0	0	0	1.5	3.5	100
24 I know how my child is progressing	51	29	20	2	0	0	1.5	3.5	96
25 The teaching is good	51	37	14	0	0	0	1.3	3.7	100
26 The school provides appropriate homework	51	21	21	8	1	0	1.8	3.2	82
27 Know what my child has to do be successful	51	27	23	1	0	0	1.5	3.5	98
28 My child is encouraged to become independent	51	38	13	0	0	0	1.3	3.7	100
29 Child gaining new skills that will help in future	51	33	17	1	0	0	1.4	3.6	98

### Overall Satisfaction

	Return Count	Strongly Agree	Agree	Disagree	Strongly Disagree	Not Answered	Mean Score	Reverse Mean Score	Agree%
30 My child is making good progress	51	36	14	1	0	0	1.3	3.7	98
31 I am satisfied with the choice of this school	50	43	7	0	0	1	1.1	3.9	100
32 I would recommend the school to a friend	50	43	7	0	0	1	1.1	3.9	100