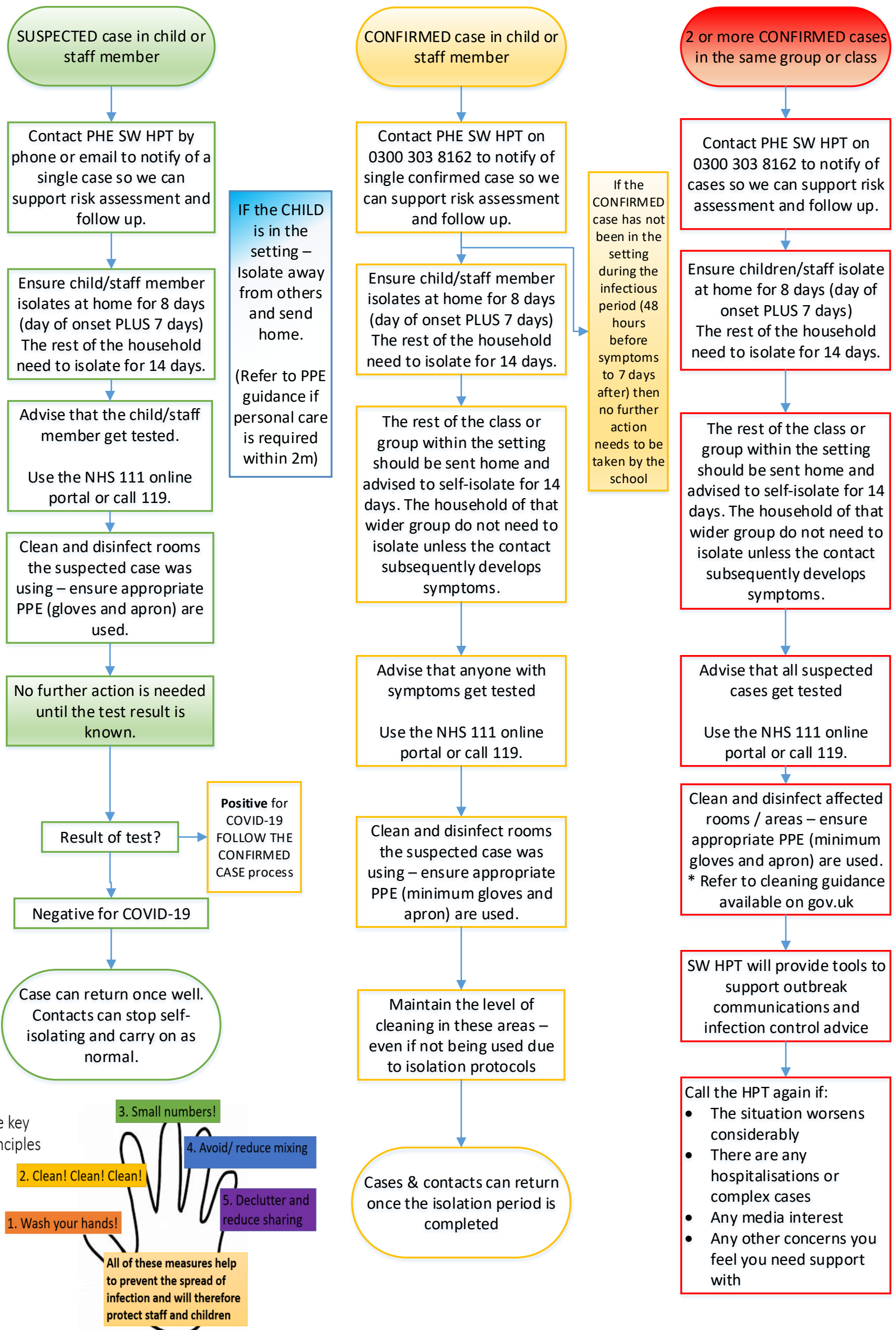


Prevent the spread of infection by maintaining high standards of hygiene, including hand washing and regular cleaning and disinfection of surfaces. This will help prevent COVID-19 spreading in schools, as well as other infectious diseases.
 If you have any infection control concerns or questions please call the South West Health Protection Team on 0300 303 8162. If the matter is not urgent you can also email swhpt@phe.gov.uk.
 GUIDANCE: Visit gov.uk/coronavirus for detailed schools guidance and other guidance
 TESTING: Visit nhs.uk/ask-for-a-coronavirus-test



COVID-19 Case Definition: (as of 18/05/20)

- A high temperature
- A new, continuous cough
- A loss of, or change to, your sense of smell or taste

INFECTIOUS PERIOD:
 48 hours before the onset of symptoms to 7 days after onset.
 IF case has no symptoms but a positive test, it is 48 hours prior to test

Cleaning:
 For detailed guidance refer to the guidance on gov.uk:

Routine measures during COVID-19 pandemic should already be to outbreak standard.

PPE should be worn for cleaning – minimum gloves and disposable apron. Consider using face mask and eye protection if risk is high – ie. Cleaning areas where there are visible bodily fluids.

Public areas (e.g. corridors – clean as normal)

Surfaces that could be contaminated need cleaning and disinfection.

All frequently touched surfaces (door handles, taps, table tops, keyboards etc.) should also be cleaned and disinfected.

Use disposable cloths or paper roll, disposable mop heads to clean hard surfaces (e.g. floors, sanitary fittings, chairs, tables)

Use a combined detergent and disinfectant or use a two-stage cleaning process of detergent (household type cleaner) followed by a hypochlorite solution (1000ppm) e.g. diluted milton. [Check chemicals in use are effective against enveloped viruses]

Avoid splashes and spray when cleaning where possible.

Waste: Any COVID-19 related waste should be double-bagged and stored for 72 hours before usual disposal.

