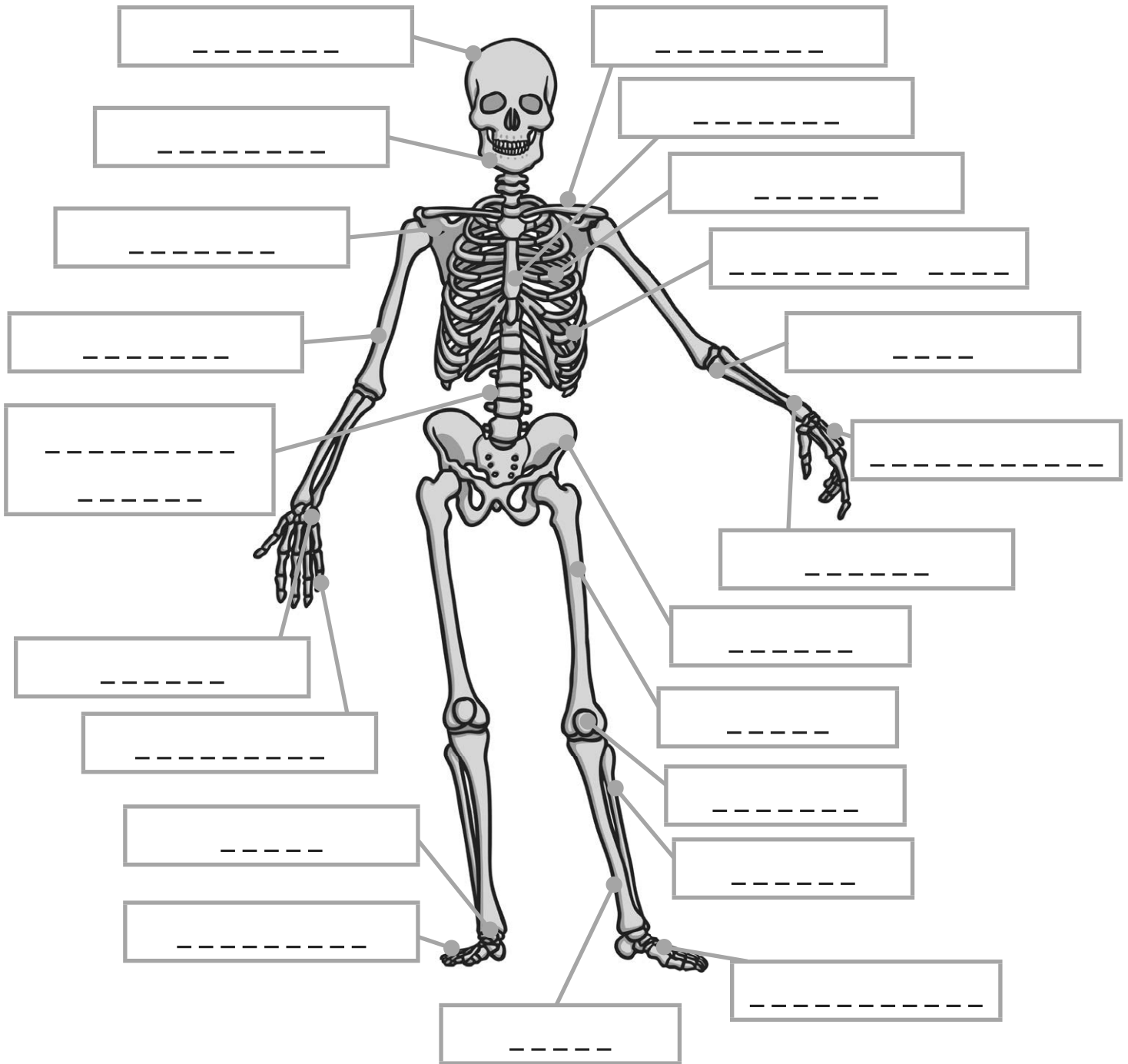




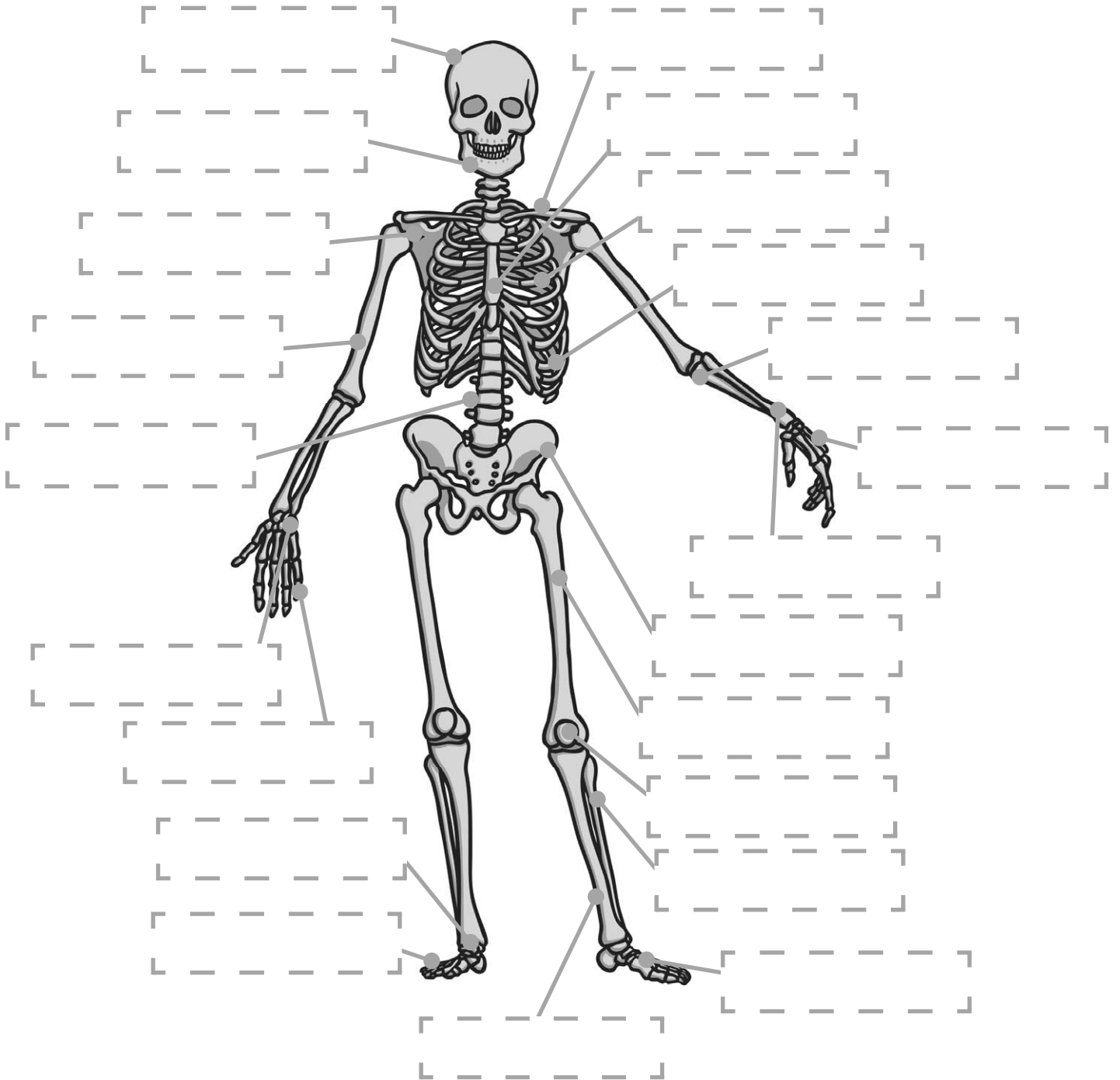
Scientific Names Skeleton Labelling Sheet



Key Words: cranium, vertebral column, costal, thoracic cage, sternum, clavicle, talus, humerus, femur, tibia, fibula, phalanges (x 2), metacarpals, scapula, mandible, carpals, pelvis, patella, metatarsals, radius, ulna



Scientific Names Skeleton Labelling Sheet





Phalanges is on here twice as there are two sets of bones called phalanges!

mandible	phalanges	talus	radius
humerus	cranium	fibula	vertebral column
metatarsals	carpal	thoracic cage	ulna
femur	scapula	costal	pelvis
clavicle	phalanges	metacarpals	patella
tibia	sternum		

mandible	phalanges	talus	radius
humerus	cranium	fibula	vertebral column
metatarsals	carpal	thoracic cage	ulna
femur	scapula	costal	pelvis
clavicle	phalanges	metacarpals	patella
tibia	sternum		

mandible	phalanges	talus	radius
humerus	cranium	fibula	vertebral column
metatarsals	carpal	thoracic cage	ulna
femur	scapula	costal	pelvis
clavicle	phalanges	metacarpals	patella
tibia	sternum		

mandible	phalanges	talus	radius
humerus	cranium	fibula	vertebral column
metatarsals	carpal	thoracic cage	ulna
femur	scapula	costal	pelvis
clavicle	phalanges	metacarpals	patella
tibia	sternum		

Scientific Names Skeleton Labelling Sheet Answers

