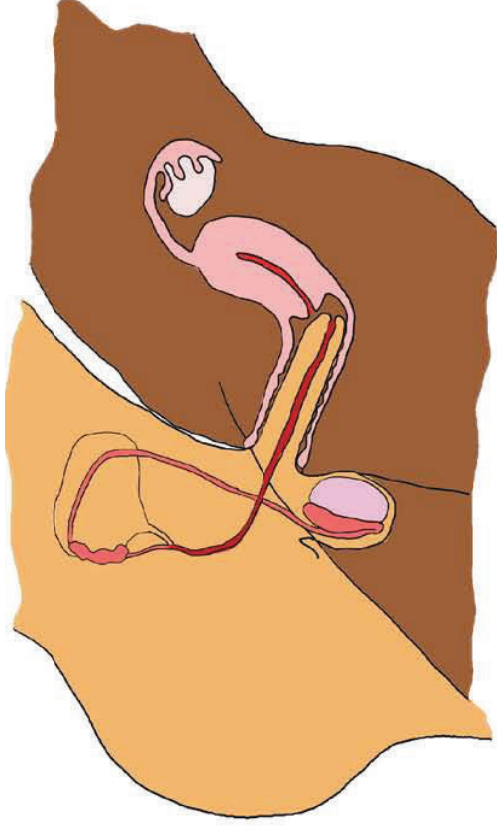
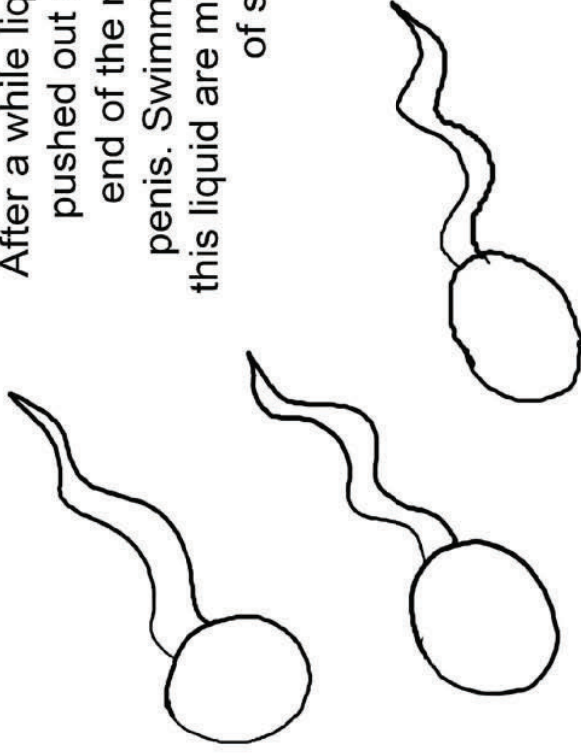


The sperm swim into the woman's womb and then into the fallopian tubes.

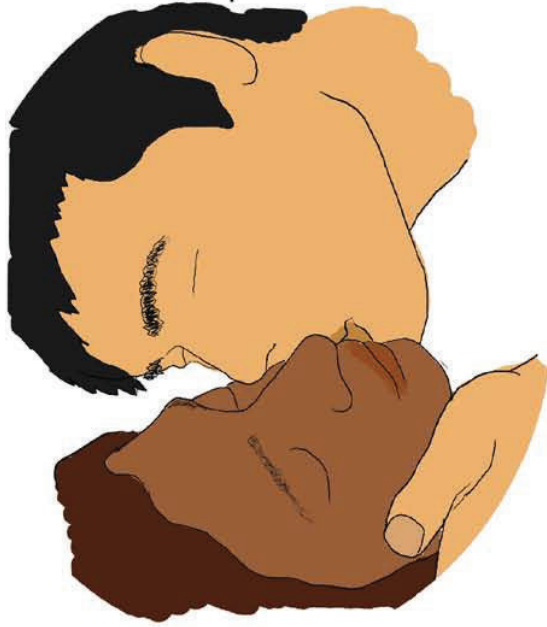


Now the woman's vagina can take the man's penis inside it. This is called sexual intercourse. It should feel nice.

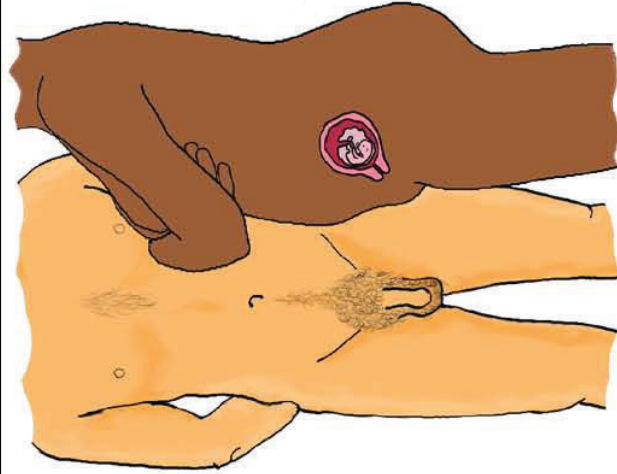
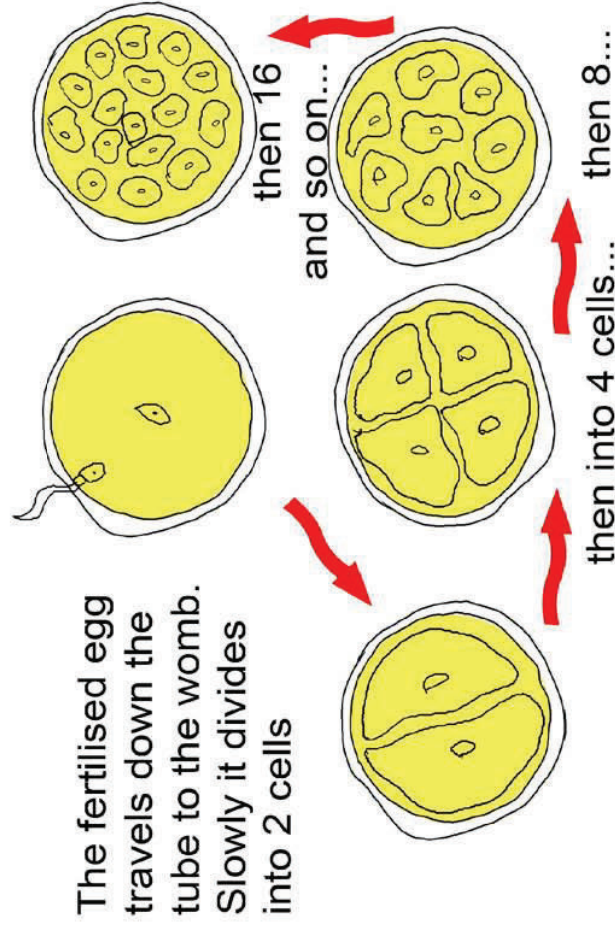
After a while liquid is pushed out of the end of the man's penis. Swimming in this liquid are millions of sperm



Sometimes when a man and a woman are making love the man's penis gets stiff and the woman's vagina gets slippery.



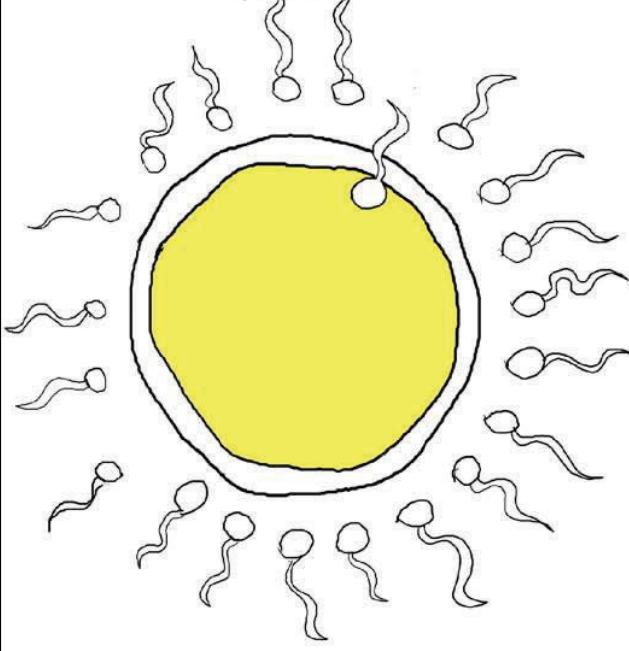
When an adult couple are in a relationship they may make love. This is when they take pleasure in touching each other in sexual ways.



When the cells reach the womb they must attach themselves to the side so that they can continue to grow.

It usually takes nine months for these cells to become a fully grown baby that is ready to be born.

This is called pregnancy.



If there is an egg in one of the tubes it may join up with one of the sperm. The egg is now fertilised.