

# Safeguarding issues

---

## Emslie Morgan Academy

### **BULLYING**

The school take all cases of bullying very seriously and will work with pupils and families to try and resolve any instances. EMA has an anti-bullying policy that parents should read and understand.

### **E-SAFETY**

EMA recognises that technology plays an important role in the education of pupils and is committed to safeguarding children online.

### **HEALTH AND SAFETY/SITE SAFETY**

Everyone at EMA has a responsibility to keep adults and children safe in their environment. The school has trained first aiders to deal with any accidents and fire wardens.

Dawn Tolcher is the designated Health and Safety Governor.

All members of staff are required to wear ID badges at all times.

All members of staff are aware of their responsibilities to report Health and Safety concerns to the site manager immediately.

### **ENTRY AND EXIT FROM THE SCHOOL**

All visitors must report to the reception upon entering the school premises. All visitors must sign in the visitors book and receive a visitors badge. Only visitors who have a valid DBS and ID will be allowed unsupervised access to the school. Visitors with no DBS or photo ID must be supervised by a member of staff at all times.

### **SINGLE CENTRAL RECORD (SCR)**

The SCR holds information on all staff and visitors in the school. J. Kelly is responsible for the upkeep of the SCR and the DSL monitors it regularly in line with OFSTED requirements.

### **COMPLAINTS**

Parents should raise any complaints with the Headteacher. If you do not feel the matter has been resolved you can raise your concerns with the Local Governing Body or LADO .

### **ALLEGATIONS AGAINST A MEMBER OF STAFF**

Any concerns about a member of staff's conduct should be passed on to the Headteacher. If the concern is about the Headteacher, it should be reported to the Chair of Governors.

### **FURTHER HELP AND SUPPORT**

If you're worried about a child, contact NSPCC 24/7 for help, advice and support.

[www.nspcc.org.uk](http://www.nspcc.org.uk)

Tel: 0808 800 5000

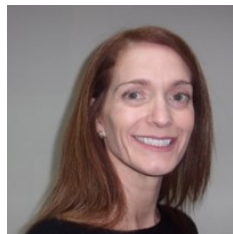
mail: [help@nspcc.org.uk](mailto:help@nspcc.org.uk)



Keeping Children  
Safe in Education:  
Information for  
Parents

## Useful Contacts

### Designated Safeguarding Lead:

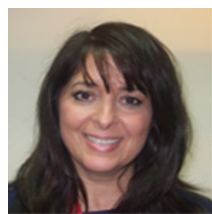


Mrs F Allen

### Deputy Designated Safeguarding Leads:



Mr J Thomson



Mrs Sorrentino

### Governor for Safeguarding: Mrs Jane Whisker

## Keeping Children Safe

EMA is committed to keeping pupils safe. Everybody has a responsibility to keep ALL children under the age of 18 safe from 4 types of harm:

- Physical
- Sexual
- Emotional
- Neglect

## What EMA must do

A child should be able to go to school and feel safe so that they can achieve their very best.

- The school has a Designated Safeguarding Lead (Mrs F Allen) and two Deputy Designated Safeguarding Leads (Mrs Sorrentino and Mr J Thomson) who have had extra training to know what to do when a concern is raised.
- All staff at EMA will be DBS checked to make sure they are safe to work with children.
- All staff will be trained to identify child abuse and what to do if they are concerned.
- We will always listen to you and work closely with you if we are concerned about your child, but sometimes we may not be able to discuss individual concerns.
- A full safeguarding policy is available on request or on the school website.
- We will help your child learn about keeping themselves safe. Lessons can include anti-bullying, e-safety, healthy relationships, drugs and alcohol awareness. As part of these lessons your child will be told what to do if they are worried or concerned about their safety.

## What parents/carers must do

Parents/carers are the most important people to keep their children safe. You should always:

- Talk to school if you need help or support.
- Read the school policies about safety issues such as 'Behaviour', 'Attendance' and 'Anti-bullying policy'
- Let the school know if your child has a medical condition.
- Let the school know if there is a change in your circumstances such as house move, a new contact number, or change of parental responsibility.
- Let the school know if your child is going to be absent and the reasons why.

## Safeguarding & welfare issues

### ATTENDANCE

Your child's attendance is monitored daily and any absences are always followed up by the attendance officer. EMA has an Attendance Policy that parents should read and understand.

### BEHAVIOUR

Your child's behaviour is monitored daily incidents and recorded on Behaviour Watch. The school has a behaviour policy that parents should read and understand.