



Atlantic Centre of Excellence Multi Academy Trust

Keeping Children Safe in Education

CHILD PROTECTION AND SAFEGUARDING POLICY AND PROCEDURES

Date Adopted: 15 June 2018

Date to be Reviewed: Summer 2019

‘SAFEGUARDING is Everyone’s Responsibility’

Key Information for ACE Trust

- The ACE Designated Safeguarding Lead (DSL) is: Jennie Walker
- The ACE Deputy Designated Safeguarding Lead (DDSL) is: Antus Philips
- The ACE Designated Teacher for Children in Care is: Jennie Walker
- The ACE Single Point of Contact (SPOC) for the Prevent agenda is: Jennie Walker
- The ACE Child Sexual Exploitation Lead is: Jennie Walker
- The ACE Safeguarding Director is: Tanya Ovenden-Hope

Key Information for Charlestown Primary School

- The School Designated Safeguarding Lead (DSL) is: Mark Clutsom
- The School Deputy Designated Safeguarding Leads (DDSL) are: Amy Dyer and Jessica Daw
- The School Designated Teacher for Children in Care is: Amy Dyer
- The School Single Point of Contact (SPOC) for the Prevent agenda is: Mark Clutsom
- The School Child Sexual Exploitation Lead is: Mark Clutsom
- The School Safeguarding Governor is: Tasha Davis

This policy is based on a template produced by The Key and approved by Forbes Solicitors . It was written on behalf of ACE by Jennie Walker (ACE Trust Designated Safeguarding Lead). **Revision date Summer 2019.**

Contents

1. Statement: A child centred and coordinated approach to safeguarding	3
2. Aims and Purpose.....	4
3. Legislation and statutory guidance.....	5
4. Definitions.....	6
5. Equality statement	7
6. Roles and responsibilities.....	7
7. Confidentiality	9
8. Recognising abuse and taking action.....	9
9. Notifying parents	15
10. Mobile phones and cameras	15
11. Complaints and concerns about school safeguarding practices	15
12. Record-keeping.....	16
13. Training	17
14. Monitoring arrangements.....	17
15. Links with other policies.....	18
Appendix 1: types of abuse.....	19
Appendix 2: safer recruitment and DBS checks – policy and procedures.....	20
Appendix 3: allegations of abuse made against staff	23
Appendix 4: specific safeguarding issues	27
Appendix 5 : Key Roles and Responsibilities:	36
Appendix 6: Key Messages from Serious Case Reviews (SCR)	38

1. Statement: A child centred and coordinated approach to safeguarding

1. ACE Academy Trust and its staff are an important part of the wider safeguarding system for children. This system is described in statutory guidance Working together to safeguard children 2018.

2. Safeguarding and promoting the welfare of children is **everyone's** responsibility. **Everyone** who comes into contact with children and their families has a role to play. In order to fulfil this responsibility effectively, all professionals should make sure their approach is child-centred. This means that they should consider, at all times, what is in the **best interests** of the child.

3. No single professional can have a full picture of a child's needs and circumstances. If children and families are to receive the right help at the right time, **everyone** who comes into contact with them has a role to play in identifying concerns, sharing information and taking prompt action.

4. Safeguarding and promoting the welfare of children is defined for the purposes of this guidance as:

- protecting children from maltreatment;
- preventing impairment of children's health or development;
- ensuring that children grow up in circumstances consistent with the provision of safe and effective care; and
- taking action to enable all children to have the best outcomes.

5. Children includes everyone under the age of 18.

The role of ACE Academy Trust staff

6. School staff are particularly important as they are in a position to identify concerns early, provide help for children, and prevent concerns from escalating.

7. **All** staff have a responsibility to provide a safe environment in which children can learn.

8. **All** staff are prepared to identify children who may benefit from early help. Early help means providing support as soon as a problem emerges at any point in a child's life, from the foundation years through to the teenage years.

9. **Any staff member** who has a concern about a child's welfare should follow the referral processes. Staff should expect to support social workers and other agencies following any referral.

10. Your school's designated safeguarding (DSL) lead is Mark Clutsom. The DSL will provide support to staff to carry out their safeguarding duties and who will liaise closely with other services such as children's social care.

11. The designated safeguarding lead (and any deputies) are most likely to have a complete safeguarding picture and be the most appropriate person to advise on the response to safeguarding concerns.

12. The Teachers' Standards 2012 state that teachers (which includes headteachers) should safeguard children's wellbeing and maintain public trust in the teaching profession as part of their professional duties.

What school staff are trained to know

13. **All** staff are aware of systems within the school which support safeguarding and these are explained to them as part of staff induction. This should include:

- the child protection policy;
- the behaviour policy;
- the staff code of conduct policy;
- the safeguarding response to children who go missing from education; and
- the role of the designated safeguarding lead (including the identity of the designated safeguarding lead and any deputies).

14. **All** staff receive appropriate safeguarding and child protection training which is regularly updated. In addition, all staff receive safeguarding and child protection updates

15. **All** staff are aware of their local early help process and understand their role in it.

16. **All** staff are aware of the process for making referrals to children's social care and for statutory assessments under the Children Act 1989, especially section 17 (children in need) and section 47 (a child suffering, or likely to suffer, significant harm) that may follow a referral, along with the role they might be expected to play in such assessments.

17. **All** staff know what to do if a child tells them he/she is being abused or neglected. Staff know how to manage the requirement to maintain an appropriate level of confidentiality. This means only involving those who need to be involved, such as the designated safeguarding lead (or a deputy) and children's social care. Staff should never promise a child that they will not tell anyone about a report of abuse, as this may ultimately not be in the best interests of the child.

2. Aims and Purpose

The purpose of this policy is to provide a secure framework for all staff in safeguarding and promoting the welfare of those pupils who attend an ACE Trust Academy. Our Trust recognises that the safety and welfare of children is paramount and that we have a responsibility to protect children in all of our schools activities. We take all reasonable steps to ensure, through appropriate procedures and training, that all children, irrespective of sex, age, disability, race, religion or belief, sexual identity or social status, are protected from abuse.

The Trust and our Schools aim to ensure that:

- A safe learning environment is created and maintained for children and young people
- Appropriate action is taken in a timely manner to safeguard and promote children's welfare
- All staff are aware of their statutory responsibilities with respect to safeguarding
- Staff are properly trained in recognising and reporting safeguarding issues and taking action to address them, in partnership with other organisations where appropriate
- We carefully recruit and select employees, contractors and volunteers.
- All staff have an understanding that 'it could happen here' and that no one is free from taking an active role in safeguarding.

In order to fulfil our duty under **Section 157 of the Education Act 2002**, all educational settings to whom the duty applies, should have in place arrangements that reflect the importance of safeguarding and promoting the welfare of children

All schools should give effect to their duty to safeguard and promote the welfare of their pupils under the Education Act 2002 and, where appropriate, under the Children Act 1989 by:

- Creating and maintaining a safe learning environment for children and young people.
- Identifying where there are child welfare concerns and taking action to address them, in partnership with other organisations where appropriate.

This policy develops procedures and good practice within ACE Trust, to ensure that there is an understanding of the duty to safeguard and promote the welfare of all children and young people including those who are vulnerable. We endeavor to provide safe and welcoming environments where children and young people are respected and feel valued. It provides evidence of how this will be implemented within our schools and within multi-agency working arrangements.

This policy has been read by all staff and signed to the effect that they have read and understood it.

The policy will be accessible to all visitors to the ACE Trust schools, parents and carers through the school's website and a hard copy will be available at each school office.

Meeting your communication needs

We aim to ensure that your needs are met. If you would like this information in audio type, in Braille, large print, any other format or interpreted in a language other than English please inform your school Designated Safeguarding Lead.

Terminology

We aim to help you understand the language used in this policy

- Child includes everyone under the age of 18 years old
- All staff – refers to all those staff working for or on behalf of the Trust or school, full time or part time, permanent or temporary, in either a paid or voluntary capacity.
- Parent – refers to birth parents and other adults in a parenting role, for example step parents, foster carers, and adoptive parents, any other person(s) who have legal parental responsibility for a child.
- Board of Directors and Local Advisory Board – refers to the forms of governance within our multi academy trust.
- Safeguarding and promoting the welfare of children refers to the process of protecting children from maltreatment, preventing the impairment of health or development, ensuring that children grow up in circumstances consistent with the provision of safe and effective care and taking action to enable all children to have the best outcomes.
- Child protection refers to the processes undertaken to protect children who have been identified as suffering, or being at risk of suffering significant harm.

3. Legislation and statutory guidance

- This policy is based on the Department for Education's statutory guidance, [Keeping Children Safe in Education 2018](#) and [Working Together to Safeguard Children 2018](#), and the [DfE Governance Handbook](#). We comply with this guidance and the procedures set out by our local Safeguarding Children Partnership.
- This policy is also based on the following legislation:

- Part 3 of the schedule to the [Education \(Independent School Standards\) Regulations 2014](#), which places a duty on academies and independent schools to safeguard and promote the welfare of pupils at the school
- [The Children Act 1989](#) (and [2004 amendment](#)), which provides a framework for the care and protection of children
- Section 5B(11) of the Female Genital Mutilation Act 2003, as inserted by section 74 of the [Serious Crime Act 2015](#), which places a statutory duty on teachers to report to the police where they discover that female genital mutilation (FGM) appears to have been carried out on a girl under 18
- [Statutory guidance on FGM](#), which sets out responsibilities with regards to safeguarding and supporting girls affected by FGM
- [The Rehabilitation of Offenders Act 1974](#), which outlines when people with criminal convictions can work with children
- Schedule 4 of the [Safeguarding Vulnerable Groups Act 2006](#), which defines what 'regulated activity' is in relation to children
- Statutory [guidance on the Prevent duty](#), which explains schools' duties under the Counter-Terrorism and Security Act 2015 with respect to protecting people from the risk of radicalisation and extremism
- The [Childcare \(Disqualification\) Regulations 2009](#) and [Childcare Act 2006](#), which set out who is disqualified from working with children
- This policy also meets requirements relating to safeguarding and welfare in the [statutory framework for the Early Years Foundation Stage](#).
- This policy also complies with our funding agreement and articles of association.

Our Trust and schools refer to the locally agreed inter-agency procedures that have been put in place by our local Safeguarding Children Partnership:

- The South West Child Protection Procedures: www.swcpp.org.uk and Cornwall and the Isles of Scilly Safeguarding Children Partnership www.safechildren-cios.co.uk
- In accordance with the above procedures, the School carries out an annual audit of its Safeguarding provision (S157 Safeguarding Audit, requirement of the Education Act 2002 & 2006) and sends a copy to the Local Authority from which a report is submitted to Cornwall and Isles of Scilly Safeguarding Children Board.

4. Definitions

Safeguarding and promoting the welfare of children means:

- Protecting children from maltreatment
- Preventing impairment of children's health or development
- Ensuring that children grow up in circumstances consistent with the provision of safe and effective care
- Taking action to enable all children to have the best outcomes

Child protection is part of this definition and refers to activities undertaken to prevent children suffering, or being likely to suffer, significant harm.

Abuse is a form of maltreatment of a child, and may involve inflicting harm or failing to act to prevent harm. Appendix 1 explains the different types of abuse.

Neglect is a form of abuse and is the persistent failure to meet a child's basic physical and/or psychological needs, likely to result in the serious impairment of the child's health or development. Appendix 1 defines neglect in more detail.

Children includes everyone under the age of 18.

5. Equality statement

Some children have an increased risk of abuse, and additional barriers can exist for some children with respect to recognising or disclosing it. We are committed to anti-discriminatory practice and recognise children's diverse circumstances. We ensure that all children have the same protection, regardless of any barriers they may face.

We give special consideration to children who:

- Have special educational needs or disabilities
- Are young carers
- May experience discrimination due to their race, ethnicity, religion, gender identification or sexuality
- Have English as an additional language
- Are known to be living in difficult situations – for example, temporary accommodation or where there are issues such as substance abuse or domestic violence
- Are at risk of FGM, sexual exploitation, forced marriage, or radicalisation
- Are asylum seekers

6. Roles and responsibilities

Safeguarding and child protection is **everyone's** responsibility. This policy applies to all staff, volunteers and governors in the school and is consistent with the procedures of Cornwall and the Isles of Scilly Safeguarding Children Board. Our policy and procedures also apply to extended school and off-site activities.

6.1 All staff

All staff will read and understand part 1 and Annex A of the Department for Education's statutory safeguarding guidance, [Keeping Children Safe in Education 2018](#), and review this guidance at least annually.

All staff will be aware of:

- Our systems which support safeguarding, including the ACE Trust staff code of conduct, the role of the designated safeguarding lead (DSL), the behaviour policy, and the safeguarding response to children who go missing from education.
- The Early Help Hub, its process (sometimes known as the common assessment framework) and their role in it, including identifying emerging problems, liaising with the DSL, and sharing information with other professionals to support early identification and assessment.
- The process for making referrals to local authority children's social care and for statutory assessments that may follow a referral, including the role they might be expected to play.
- What to do if they identify a safeguarding issue or a child tells them they are being abused or neglected, including specific issues such as FGM, and how to maintain an appropriate level of confidentiality while liaising with relevant professionals
- The signs of different types of abuse and neglect, as well as specific safeguarding issues, such as child sexual exploitation (CSE), FGM and radicalisation
- Section 13 and appendix 4 of this policy outline in more detail how staff are supported to do this.

6.2 The designated safeguarding lead (DSL)

Our School based DSL is Mark Clutsom. The DSL takes lead responsibility for child protection and wider safeguarding.

During term time, the DSL will be available during school hours for staff to discuss any safeguarding concerns.

Mark Clutsom can be contacted out of school hours if necessary, e.g. email: head@charlestown.cornwall.sch.uk

When the DSL is absent, the School based Deputy Designated Safeguarding Lead (DDSL) Amy Dyer and Jessica Daw, will act as cover. (adyer@charlestown.cornwall.sch.uk) (jdaw@charlestown.cornwall.sch.uk)

If the DSL and Deputy are not available and there is an immediate concern about a child or their family **any member** of staff can phone the MARU for advice and guidance if the DSL/DDSL are not available.

Contact details: MARU 0300 123116

If the concerns arise out of office hours contact 01208 251300

If you are unsure you can contact MARU for advice and guidance.

The MARU can act as cover (for example, during out-of-hours/out-of-term activities).

The DSL will be given the time, funding, training, resources and support to:

- Provide advice and support to other staff on child welfare and child protection matters
- Take part in strategy discussions and inter-agency meetings and/or support other staff to do so
- Contribute to the assessment of children
- Refer suspected cases, as appropriate, to the relevant body (local authority children's social care, Channel programme, Disclosure and Barring Service, and/or police), and support staff who make such referrals directly
- The DSL will also keep the headteacher informed of any issues, and liaise with local authority case managers and designated officers for child protection concerns as appropriate.

The full responsibilities of the DSL and Deputy DSL are set out in their job descriptions.

6.3 The Local Advisory Board

The Trust Directors and the School based Local Advisory Board will approve this policy at each review, and hold the headteacher to account for its implementation.

The Trust Directors will appoint a named Director and the Local Advisory Board will appoint a LAB member to monitor the effectiveness of this policy in conjunction with the full boards. This is always a different person from the DSL.

The Chair of Directors and the School based Chair of Governors will act as the 'case managers' in the event that an allegation of abuse is made against the Executive Principal or the headteacher, where appropriate (see appendix 3).

6.4 The headteacher

The headteacher is responsible for the implementation of this policy, including:

- Ensuring that staff (including temporary staff) and volunteers are informed of this policy as part of their induction
- Communicating this policy to parents when their child joins the school and via the school website
- Ensuring that the DSL has appropriate time, funding, training and resources, and that there is always adequate cover if the DSL is absent

- Ensuring that all staff undertake appropriate safeguarding and child protection training and update this regularly
- Acting as the 'case manager' in the event of an allegation of abuse made against another member of staff or volunteer, where appropriate (see appendix 3)
- Ensuring the relevant staffing ratios are met, where applicable
- Making sure each child in the Early Years Foundation Stage is assigned a key person

7. Confidentiality

The Trust's approach to confidentiality is set out in the Trust's Data Protection Policy.

Confidentiality needs to be discussed and fully understood by all those working with children, particularly in the context of child protection. No adult must ever guarantee confidentiality to any individual including parents, children, colleagues. Staff should make children aware that if they disclose information that may be harmful to themselves or others, then certain actions will need to be taken.

Wherever possible, consent should be obtained before sharing personal information with third parties. In some circumstances, obtaining consent may not be possible or in the best interest of the child or young person, e.g., where safety and welfare of that child or young person necessitates that the information should be shared. The law permits the disclosure of confidential information necessary to safeguard a child or children. Disclosure should be justifiable in each case, according to the particular facts of the case, and legal advice should be sought if in doubt.

If the information given relates directly to the safety and welfare of a child then the DSL must be informed immediately. They should then contact MARU.

- Timely information sharing is essential to effective safeguarding
- Information must only be shared on a 'need-to-know' basis, but you do not need consent to share information if a child is suffering, or at risk of, serious harm
- Staff should never promise a child that they will not tell anyone about an allegation, as this may not be in the child's best interests
- Confidentiality is also addressed in this policy with respect to record-keeping in section 12, and allegations of abuse against staff in appendix 3

8. Recognising abuse and taking action

Staff, volunteers and governors must follow the procedures set out below in the event of a safeguarding issue.

8.1 If a child is in immediate danger

Make a referral to children's social care and/or the police **immediately** if a child is in immediate danger or at risk of harm. **Anyone can make a referral.**

Tell the DSL (see section 6.2) as soon as possible if you make a referral directly.

If there is an immediate concern about a child or their family any member of staff can phone the MARU for advice and guidance if the DSL/DDSL are not available.

Contact details: MARU 0300 123116

If the concerns arise out of office hours contact 01208 251300

If you are unsure you can contact MARU for advice and guidance.

Contacting MARU (for advice or when making a referral)

Ensure that you have as much factual information about the child as possible when you phone include:

- Full name
- D.O.B
- Address
- Family composition details (including names of parent(s) and siblings)
- Any key professionals working with the school
- Factual information about the concerns you have

Making a referral in writing:

You will need to back any phone call up in writing by completing the multi-agency referral form. This is available from the CIOS SCB website www.safechildren-cios.co.uk You must then send it in by secure email which is clearly highlighted on the referral form:

<https://www.cornwall.gov.uk/media/20401433/cornwall-inter-agency-referral-form.doc>

MARU Secure email: multiagencyreferralunit@cornwall.gcsx.gov.uk

You might also include the following link to the GOV.UK webpage for reporting child abuse to your local council:

Child abuse can also be reported at any time to your local council via the following:
<https://www.gov.uk/report-child-abuse-to-local-council>

8.2 If a child makes a disclosure to you

If a child discloses a safeguarding issue to you, you should:

- Listen to and believe them. Allow them time to talk freely and do not ask leading questions
- Stay calm and do not show that you are shocked or upset
- Tell the child they have done the right thing in telling you. Do not tell them they should have told you sooner
- Explain what will happen next and that you will have to pass this information on. Do not promise to keep it a secret
- Write up your conversation as soon as possible in the child's own words. Stick to the facts, and do not put your own judgement on it
- Sign and date the write-up and pass it on to the DSL. Alternatively, if appropriate, make a referral to children's social care and/or the police directly (see 7.1), and tell the DSL as soon as possible that you have done so.

8.3 If you discover that Female Genital Mutilation has taken place or a pupil is at risk of FGM

The Department for Education's Keeping Children Safe in Education 2018 explains that FGM comprises "all procedures involving partial or total removal of the external female genitalia, or other injury to the female genital organs".

FGM is illegal in the UK and a form of child abuse with long-lasting, harmful consequences. It is also known as 'female genital cutting', 'circumcision' or 'initiation'.

Possible indicators that a pupil has already been subjected to FGM, and factors that suggest a pupil may be at risk, are set out in appendix 4.

Any teacher who discovers that an act of FGM appears to have been carried out on a **pupil under 18** must immediately report this to the police, personally. This is a statutory duty, and teachers will face disciplinary sanctions for failing to meet it.

The duty above does not apply in cases where a pupil is *at risk* of FGM or FGM is suspected but is not known to have been carried out. Staff should not examine pupils.

Any other member of staff who discovers that an act of FGM appears to have been carried out on a **pupil under 18** must speak to the DSL and follow our local safeguarding procedures.

Any member of staff who suspects a pupil is *at risk* of FGM must speak to the DSL and follow our local safeguarding procedures.

8.4 If you have concerns about a child (as opposed to a child being in immediate danger)

Figure 1 illustrates the procedure to follow if you have concerns about a child's welfare and the child is not in immediate danger.

Where possible, speak to the DSL first to agree a course of action. Alternatively, make a referral to local authority children's social care directly (see 'Referral' below).

You can also contact the charity NSPCC on 0808 800 5000 if you need advice on the appropriate action.

Early Help

If early help is appropriate, the DSL will support you in liaising with other agencies and setting up an inter-agency assessment as appropriate.

The DSL will keep the case under constant review and the school will consider a referral to local authority children's Early Help Hub if the situation does not seem to be improving. Timelines of interventions will be monitored and reviewed.

Referral

If it is appropriate to refer the case to local authority children's social care or the police, the DSL will make the referral or support you to do so.

If you make a referral directly (see section 8.1), you must tell the DSL as soon as possible.

The local authority will make a decision within 1 working day of a referral about what course of action to take and will let the person who made the referral know the outcome. The DSL or person who made the referral must follow up with the local authority if this information is not made available, and ensure outcomes are properly recorded.

If the child's situation does not seem to be improving after the referral, the DSL or person who made the referral must contact the local authority and make sure the case is reconsidered to ensure the concerns have been addressed and the child's situation improves.

8.5 If you have concerns about extremism/ radicalisation

If a child is not at immediate risk of harm, where possible, speak to the DSL first to agree a course of action. Alternatively, make a referral to local authority children's social care directly if appropriate (see 'Referral' above).

Where there is a concern, the DSL will consider the level of risk and decide which agency to make a referral to. This could include [Channel](#), the government's programme for identifying and supporting individuals at risk of being drawn into terrorism, or the local authority children's social care team.

The Department for Education also has a dedicated telephone helpline, 020 7340 7264, that school staff and governors can call to raise concerns about extremism with respect to a pupil.

You can also email counter.extremism@education.gov.uk. Note that this is not for use in emergency situations.

In an emergency, call 999 or the confidential anti-terrorist hotline on 0800 789 321 if you:

- Think someone is in immediate danger
- Think someone may be planning to travel to join an extremist group
- See or hear something that may be terrorist-related

Additional contact details:

Concerns can be discussed with the Prevent Lead for Cornwall: Steve Rowell email: prevent@cornwall.gov.uk

MARU can also be contacted for advice: 0300 1231 116

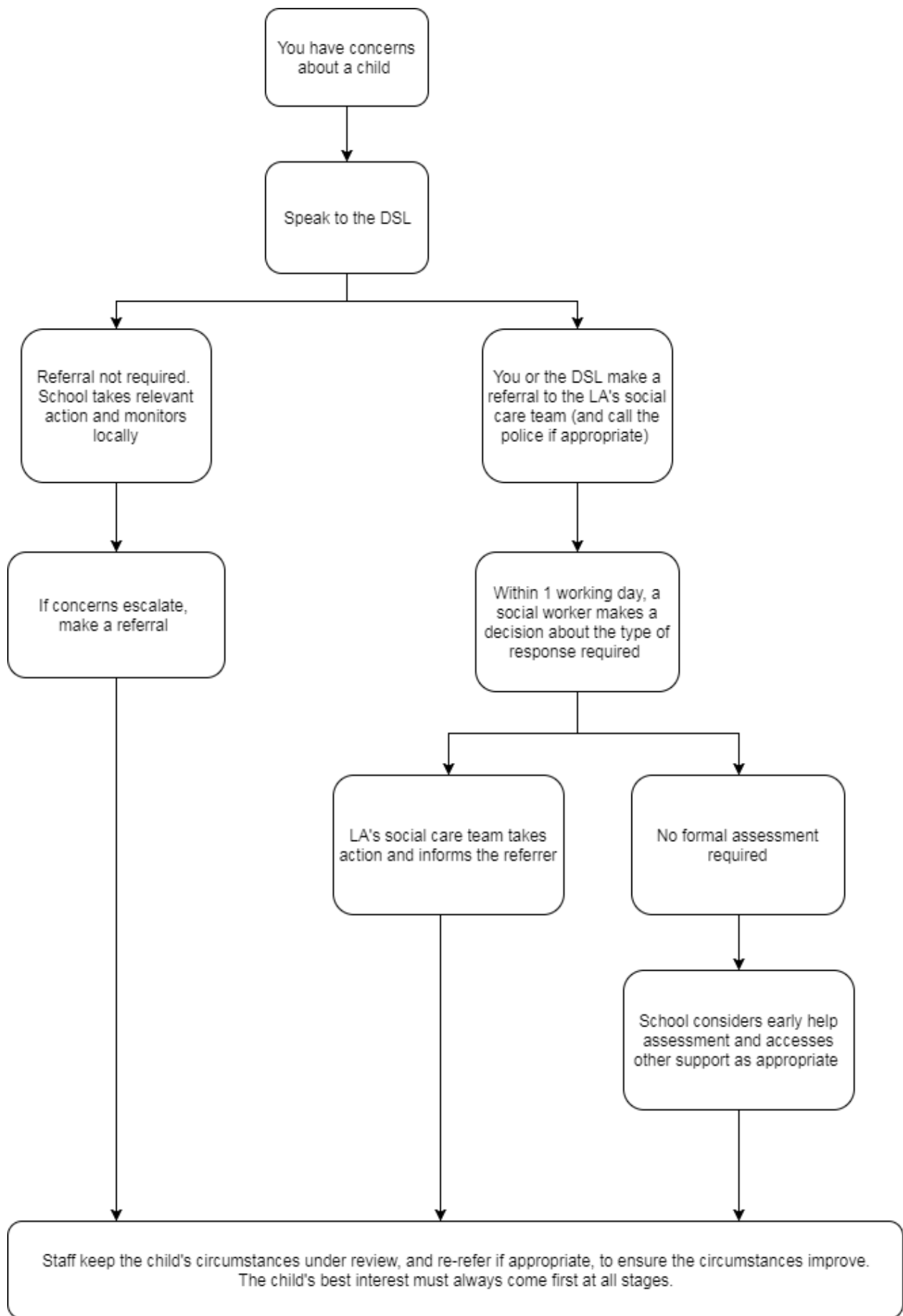
Emergency Out of Hours: Tel No: 01208 251300

If immediate and serious concerns call the police on 999

Resolution of Professional Differences

In the event that the school disagree with the actions or decisions of another agency we will consider using the Resolution of Professional Differences policy also referred to as the escalation policy. The policy is available via the following link: <http://www.safechildren-cios.co.uk/media/18591637/conflict-resolution-policy-resolvingprofessional-differences-and-flowchart.pdf>

Figure 1: procedure if you have concerns about a child's welfare (no immediate danger)



8.6 Concerns about a staff member or volunteer

If you have concerns about a member of staff or volunteer, speak to the headteacher. If you have concerns about the headteacher, speak to the Chair of Governors. If you have concerns about the ACE central team speak to the Executive Principal. If you have concerns about the Executive Principal speak to the Chair of Directors.

You can also discuss any concerns about any staff member or volunteer with the DSL.

The Chair of Directors / Executive Principal / Headteacher /Chair of Governors /DSL will then follow the procedures set out in appendix 3, if appropriate.

Where appropriate, the school will inform Ofsted of the allegation and actions taken, within the necessary timescale (see appendix 3 for more detail).

8.7 Allegations of abuse made against other pupils (Peer on Peer)

We recognise that children are capable of abusing their peers. Abuse will never be tolerated or passed off as “banter” or “part of growing up”.

Most cases of pupils hurting other pupils will be dealt with under our school’s behaviour policy, but this child protection and safeguarding policy will apply to any allegations that raise safeguarding concerns. This might include where the alleged behaviour:

- Is serious, and potentially a criminal offence
- Could put pupils in the school at risk
- Is violent
- Involves pupils being forced to use drugs or alcohol
- Involves sexual exploitation or sexual abuse, such as indecent exposure, sexual assault, or sexually inappropriate pictures or videos (including sexting)

If a pupil makes an allegation of abuse against another pupil:

- You must tell the DSL and record the allegation, but do not investigate it
- The DSL will contact the MARU and follow its advice, as well as the police if the allegation involves a potential criminal offence
- The DSL will put a risk assessment and support plan into place for all children involved – both the victim(s) and the child(ren) against whom the allegation has been made – with a named person they can talk to if needed
- The DSL will contact the children and adolescent mental health services (CAMHS), if appropriate

We will minimise the risk of peer-on-peer abuse by:

- Challenging any form of derogatory or sexualised language or behaviour
- Being vigilant to issues that particularly affect different genders – for example, sexualised or aggressive touching or grabbing towards female pupils, and initiation or hazing type violence with respect to boys
- Ensuring our curriculum helps to educate pupils about appropriate behaviour and consent
- Ensuring pupils know they can talk to staff confidentially
- Ensuring staff are trained to understand that a pupil harming a peer could be a sign that the child is being abused themselves, and that this would fall under the scope of this policy
- **(Hazing** refers to the practice of [rituals](#), challenges, and other activities involving [harassment](#), [abuse](#) or [humiliation](#) used as a way of [initiating](#) a person into a [group](#) including a new fraternity, sorority, team, or club.)

9. Notifying parents

Where appropriate, we will discuss any concerns about a child with the child's parents. The DSL will normally do this in the event of a suspicion or disclosure.

Other staff will only talk to parents about any such concerns following consultation with the DSL.

If we believe that notifying the parents would increase the risk to the child, we will discuss this with the MARU before doing so.

In the case of allegations of abuse made against other children, we will normally notify the parents of all the children involved.

10. Mobile phones and cameras

Staff are allowed to bring their personal phones to school for their own use, but will limit such use to non-contact time when pupils are not present. Staff members' personal phones will remain in their bags or locked in cupboards during contact time with pupils.

Staff are prohibited from taking pictures or recordings of pupils on their personal phones or cameras.

We will follow the General Data Protection Regulation and Data Protection Act 2018 when taking and storing photos and recordings for use in the school.

The Atlantic Centre of Excellence Trust has established a policy for mobile phones that provides staff, pupils, parents and visitors guidelines and instructions for the appropriate use of mobile phones during school hours. The policy for mobile phones also applies during school excursions, camps and extra-curricular activities.

All adults who work within the school must accept the policy before bringing mobile phones onto the school premises.

A separate policy is held in respect of photography and images (Acceptable Use Agreement) but our staff are aware at no times should their own personal cameras/smart phones be used in recording children or young people in this school.

Mobile phones, laptops, iPads, and other on-line type products are integrated into all our lives. Many are used within our Trust. However, there are those that seek to use these for their own or others gratification. The link below provides more information on on-line safety and cover issues such as:

- Bullying, including online bullying and prejudice-based bullying, racialization and/or extremist behaviour
- Child sexual exploitation and trafficking
- The impact of new technologies on sexual behaviour, for example sexting.

<http://swgfl.org.uk/products-services/online-safety/resources/>

ACE Trust take online safety very seriously both in terms of our pupils and all of our staff. Please also refer to ACE Trust e-safety/online policy and the acceptable user policy for staff.

11. Complaints and concerns about school safeguarding practices

11.1 Complaints against staff

Complaints against staff that are likely to require a child protection investigation will be handled in accordance with our procedures for dealing with allegations of abuse made against staff (see appendix 3).

11.2 Other complaints

The Atlantic Centre of Excellence Trust has established a policy for *handling complaints*. See *ACE Trust Complaints Policy*.

We also take account of requirements related to complaints set out in the safeguarding and welfare section of the statutory framework for the Early Years Foundation Stage (paragraph 3.74).

11.3 Whistle-blowing

The Atlantic Centre of Excellence Trust has established a policy on 'whistle-blowing' that covers concerns regarding the way the school safeguards pupils – including poor or unsafe practice, or potential failures. Please refer to the ACE Whistleblowing Policy.

Whistleblowing Director: Tanya Ovenden-Hope

In the event that you do not feel able to follow the schools whistle-blowing policy but remain concerned you must discuss your concerns with an appropriate independent body. In this situation you could contact:

NSPCC Whistle-blowing helpline: 0800 028 0285

Further contact details are contained within the ACE Whistle-blowing policy

12. Record-keeping

We will hold records in line with our records retention schedule.

All safeguarding concerns, discussions, decisions made and the reasons for those decisions, must be recorded in writing. If you are in any doubt about whether to record something, discuss it with the DSL.

Non-confidential records will be easily accessible and available. Confidential information and records will be held securely and only available to those who have a right or professional need to see them.

Safeguarding records relating to individual children will be retained for a reasonable period of time after they have left the school.

- Records in school are paper-based.
- Records are held securely in locked cabinets in locked rooms.

Information is shared with other agencies and when this is appropriate, in line with local safeguarding procedures.

Well-kept records are **essential** to good safeguarding and child protection practice. We are clear about the need to record any concerns held about children or young people, the status of such records and when these records should be passed over to other agencies.

In our work with children and their families, we recognise the importance of:

- Keeping clear detailed up to date written records of concerns about children and young people. This includes a chronology.
- Ensuring all records are kept secure and in a locked location.
- Ensuring records are passed on to the receiving school if a child or young person transfers. In line with current local authority guidance.
- Ensuring all records are clear, factual and jargon free.
- Asking parents to regularly update telephone numbers and details that include at least 2 contacts

In addition:

- Appendix 2 sets out our policy on record-keeping specifically with respect to recruitment and pre-employment checks.
- Appendix 4 sets out our policy on record-keeping with respect to allegations of abuse made against staff.

13. Training

13.1 All staff

All staff members will undertake safeguarding and child protection training at induction, including on whistle-blowing procedures, to ensure they understand the school's safeguarding systems and their responsibilities, and can identify signs of possible abuse or neglect. This training will be regularly updated and will be in line with advice from our local safeguarding children board.

All staff will have training on the government's anti-radicalisation strategy, Prevent, to enable them to identify children at risk of being drawn into terrorism and to challenge extremist ideas.

Staff will also receive regular safeguarding and child protection updates (for example, through emails, e-bulletins and staff meetings) as required, but at least annually.

Volunteers will receive appropriate training, if applicable.

13.2 The DSL and Deputy

The DSL and Deputy will undertake child protection and safeguarding training at least every 2 years at Tier 3 level.

In addition, they will update their knowledge and skills at regular intervals and at least annually (for example, through e-bulletins, meeting other DSLs, or taking time to read and digest safeguarding developments).

They will also undertake Prevent awareness training.

13.3 Governors (LAB members)

All governors receive training about safeguarding, to make sure they have the knowledge and information needed to perform their functions and understand their responsibilities.

13.4 Recruitment – interview/appointment panels

At least one person on any interview/appointment panel for a post at the school will have undertaken safer recruitment training, please see Appendix 2 for further detail and the ACE Safer Recruitment Policy. This covers, as a minimum, the contents of the Department for Education's statutory guidance, Keeping Children Safe in Education, and be in line with local safeguarding procedures.

14. Monitoring arrangements

This ACE policy (which is locally tailored with individual school's details) will be reviewed **annually** by the Board of Directors. After every review, it will be approved by each Local Advisory Board.

15. Links with other policies

This policy links to the following policies and procedures:

- Behaviour
- Staff/ Volunteers/ Groups, Clubs and Businesses Code of Conduct
- Complaints
- Health and safety
- Attendance
- Online safety
- Sex and relationship education
- First aid (including management of medical conditions)
- Curriculum
- Privacy notices
- Anti-bullying
- Acceptable user (for staff)
- Visitors
- Intimate care
- Confidentiality
- Safer Recruitment
- Whistleblowing
- Radicalization
- Equality and diversity
- Physical Interventions

These appendices are based on the Department for Education's statutory guidance, Keeping Children Safe in Education 2018.

Appendix 1: types of abuse

Abuse, including neglect, and safeguarding issues are rarely standalone events that can be covered by one definition or label. In most cases, multiple issues will overlap.

Physical abuse may involve hitting, shaking, throwing, poisoning, burning or scalding, drowning, suffocating or otherwise causing physical harm to a child. Physical harm may also be caused when a parent or carer fabricates the symptoms of, or deliberately induces, illness in a child.

Emotional abuse is the persistent emotional maltreatment of a child such as to cause severe and adverse effects on the child's emotional development. Some level of emotional abuse is involved in all types of maltreatment of a child, although it may occur alone.

Emotional abuse may involve:

- Conveying to a child that they are worthless or unloved, inadequate, or valued only insofar as they meet the needs of another person
- Not giving the child opportunities to express their views, deliberately silencing them or 'making fun' of what they say or how they communicate
- Age or developmentally inappropriate expectations being imposed on children. These may include interactions that are beyond a child's developmental capability, as well as overprotection and limitation of exploration and learning, or preventing the child participating in normal social interaction
- Seeing or hearing the ill-treatment of another
- Serious bullying (including cyberbullying), causing children frequently to feel frightened or in danger, or the exploitation or corruption of children. Bullying and forms of bullying including prejudice based and cyber bullying is also abusive which will include at least one, if not two, three or all four, of the defined categories of abuse [refer to ACE Trust Anti Bullying Policy].

Sexual abuse involves forcing or enticing a child or young person to take part in sexual activities, not necessarily involving a high level of violence, whether or not the child is aware of what is happening. The activities may involve:

- Physical contact, including assault by penetration (for example rape or oral sex) or non-penetrative acts such as masturbation, kissing, rubbing and touching outside of clothing
- Non-contact activities, such as involving children in looking at, or in the production of, sexual images, watching sexual activities, encouraging children to behave in sexually inappropriate ways, or grooming a child in preparation for abuse (including via the internet)

Sexual abuse is not solely perpetrated by adult males. Women can also commit acts of sexual abuse, as can other children.

Neglect is the persistent failure to meet a child's basic physical and/or psychological needs, likely to result in the serious impairment of the child's health or development. Neglect may occur during pregnancy as a result of maternal substance abuse.

Once a child is born, neglect may involve a parent or carer failing to:

- Provide adequate food, clothing and shelter (including exclusion from home or abandonment)
- Protect a child from physical and emotional harm or danger
- Ensure adequate supervision (including the use of inadequate care-givers)
- Ensure access to appropriate medical care or treatment
- It may also include neglect of, or unresponsiveness to, a child's basic emotional needs.

Appendix 2: safer recruitment and DBS checks – policy and procedures

We will record all information on the checks carried out in the school's single central record (SCR). Copies of these checks, where appropriate, will be held in individuals' personnel files. We follow requirements and best practice in retaining copies of these checks, as set out below.

Appointing new staff

When appointing new staff, we will:

- Verify their identity
- Obtain (via the applicant) an enhanced Disclosure and Barring Service (DBS) certificate, including barred list information for those who will be engaging in regulated activity (see definition below). We will not keep a copy of this for longer than 6 months
- Obtain a separate barred list check if they will start work in regulated activity before the DBS certificate is available
- Verify their mental and physical fitness to carry out their work responsibilities
- Verify their right to work in the UK. We will keep a copy of this verification for the duration of the member of staff's employment and for 2 years afterwards
- Verify their professional qualifications, as appropriate
- Ensure they are not subject to a prohibition order if they are employed to be a teacher
- Carry out further additional checks, as appropriate, on candidates who have lived or worked outside of the UK, including (where relevant) any teacher sanctions or restrictions imposed by a European Economic Area professional regulating authority, and criminal records checks or their equivalent
- Check that candidates taking up a management position are not subject to a prohibition from management (section 128) direction made by the secretary of state
- Ask for written information about previous employment history and check that information is not contradictory or incomplete
- We will seek references on all short-listed candidates, including internal candidates, before interview. We will scrutinise these and resolve any concerns before confirming appointments.
- We will ensure that appropriate checks are carried out to ensure that individuals are not disqualified under the Childcare Disqualification (Regulations) 2009 and Childcare Act 2006. Where we take a decision that an individual falls outside of the scope of these regulations and we do not carry out such checks, we will retain a record of our assessment on the individual's personnel file. This will include our evaluation of any risks and

Regulated activity means a person who will be:

- Responsible, on a regular basis in a school or college, for teaching, training, instructing, caring for or supervising children
- Carrying out paid, or unsupervised unpaid, work regularly in a school or college where that work provides an opportunity for contact with children
- Engaging in intimate or personal care or overnight activity, even if this happens only once and regardless of whether they are supervised or not

Existing staff

If we have concerns about an existing member of staff's suitability to work with children, we will carry out all the relevant checks as if the individual was a new member of staff. We will also do this if an individual moves from a post that is not regulated activity to one that is.

We will refer to the DBS anyone who has harmed, or poses a risk of harm, to a child or vulnerable adult:

- Where the 'harm test' is satisfied in respect of the individual (i.e. that no action or inaction occurred but the present risk that it could was significant)
- Where the individual has received a caution or conviction for a relevant offence
- If there is reason to believe that the individual has committed a listed relevant offence, under the [Safeguarding Vulnerable Groups Act 2006 \(Prescribed Criteria and Miscellaneous Provisions\) Regulations 2009](#)
- If the individual has been removed from working in regulated activity (paid or unpaid) or would have been removed if they had not left

Agency and third-party staff

We will obtain written notification from any agency or third-party organisation that it has carried out the necessary safer recruitment checks that we would otherwise perform. We will also check that the person presenting themselves for work is the same person on whom the checks have been made.

We will seek assurances from agency and third party professionals that they have recently undertaken safeguarding training. If not in place ACE Trust will provide this training upon request.

Contractors

We will ensure that any contractor, or any employee of the contractor, who is to work at the school has had the appropriate level insurance and qualification to carry out the works required, and that an appropriate DBS check. This will be:

- An enhanced DBS check with barred list information for contractors engaging in regulated activity
- An enhanced DBS check, not including barred list information, for all other contractors who are not in regulated activity but whose work provides them with an opportunity for regular contact with children
- We will obtain the DBS check for self-employed contractors.
- We will not keep copies of such checks for longer than 6 months.
- We will check the identity of all contractors and their staff on arrival at the school.

Trainee/student teachers

Where applicants for initial teacher training are salaried by us, we will ensure that all necessary checks are carried out.

We will seek assurances from training providers that their students have undertaken recent safeguarding training. If not in place we will provide this training upon request.

Where trainee teachers are fee-funded, we will obtain written confirmation from the training provider that necessary checks have been carried out and that the trainee has been judged by the provider to be suitable to work with children.

In both cases, this includes checks to ensure that individuals are not disqualified under the Childcare Disqualification (Regulations) 2009 and Childcare Act 2006.

Volunteers

We will:

- Supervise all volunteers at all times.

- Obtain an enhanced DBS check with barred list information for all volunteers who are new to working in regulated activity
- Obtain an enhanced DBS check without barred list information for all volunteers who are not in regulated activity, but who have an opportunity to come into contact with children on a regular basis, for example, supervised volunteers
- Carry out a risk assessment when deciding whether to seek an enhanced DBS check for any volunteers not engaging in regulated activity
- Ensure that appropriate checks are carried out to ensure that individuals are not disqualified under the Childcare Disqualification (Regulations) 2009 and Childcare Act 2006. Where we decide that an individual falls outside of the scope of these regulations and we do not carry out such checks, we will retain a record of our assessment. This will include our evaluation of any risks and control measures put in place, and any advice sought.

Governors (LAB Members)

- All governors, Directors and Members will have an enhanced DBS check without barred list information and section 128 check.

They will have an enhanced DBS check with barred list information if working in regulated activity.

The Chair of the board of *Directors* will have their DBS check countersigned by the secretary of state.

All trustees, proprietors and local governors will also have the following checks:

- Right to work in the UK
- Other checks deemed necessary if they have lived or worked outside the UK
- We will provide all Governors, Directors and Members with regular Safeguarding training to support them with their roles.

Adults who supervise pupils on work experience

When organising work experience, we will ensure that policies and procedures are in place to protect children from harm.

We will also consider whether it is necessary for barred list checks to be carried out on the individuals who supervise a pupil under 16 on work experience. This will depend on the specific circumstances of the work experience, including the nature of the supervision, the frequency of the activity being supervised, and whether the work is regulated activity.

Pupils staying with host families

Where the school makes arrangements for pupils to be provided with care and accommodation by a host family to which they are not related (for example, during a foreign exchange visit), we will request enhanced DBS checks with barred list information on those people.

Where the school is organising such hosting arrangements overseas and host families cannot be checked in the same way, we will work with our partner schools abroad to ensure that similar assurances are undertaken prior to the visit.

Appendix 3: allegations of abuse made against staff

This section of this policy applies to all cases in which it is alleged that a current member of staff or volunteer has:

- Behaved in a way that has harmed a child, or may have harmed a child, or
- Possibly committed a criminal offence against or related to a child, or
- Behaved towards a child or children in a way that indicates he or she would pose a risk of harm to children
- It applies regardless of whether the alleged abuse took place in the school. Allegations against a teacher who is no longer teaching and historical allegations of abuse will be referred to the police.
- We will deal with any allegation of abuse against a member of staff or volunteer very quickly, in a fair and consistent way that provides effective child protection while also supporting the individual who is the subject of the allegation.
- Our procedures for dealing with allegations will be applied with common sense and judgement.

Suspension

Suspension will not be the default position and will only be considered in cases where there is reason to suspect that a child or other children is/are at risk of harm, or the case is so serious that it might be grounds for dismissal. In such cases, we will only suspend an individual if we have considered all other options available and there is no reasonable alternative.

Based on an assessment of risk, we will consider alternatives such as:

- Redeployment within the school so that the individual does not have direct contact with the child or children concerned
- Providing an assistant to be present when the individual has contact with children
- Redeploying the individual to alternative work in the school so that they do not have unsupervised access to children
- Moving the child or children to classes where they will not come into contact with the individual, making it clear that this is not a punishment and parents have been consulted
- Temporarily redeploying the individual to another role in a different location, for example to an alternative school or other work for the academy trust.

Definitions for outcomes of allegation investigations

- **Substantiated:** there is sufficient evidence to prove the allegation
- **Malicious:** there is sufficient evidence to disprove the allegation and there has been a deliberate act to deceive
- **False:** there is sufficient evidence to disprove the allegation
- **Unsubstantiated:** there is insufficient evidence to either prove or disprove the allegation (this does not imply guilt or innocence)

Procedure for dealing with allegations

In the event of an allegation that meets the criteria above, the headteacher (or chair of governors / directors where the headteacher / Executive Principal is the subject of the allegation) – the 'case manager' – will take the following steps:

- Immediately discuss the allegation with the designated officer at the local authority. (LADO) This is to consider the nature, content and context of the allegation and agree a course of action, including

whether further enquiries are necessary to enable a decision on how to proceed, and whether it is necessary to involve the police and/or children's social care services. (The case manager may, on occasion, consider it necessary to involve the police *before* consulting the designated officer – for example, if the accused individual is deemed to be an immediate risk to children or there is evidence of a possible criminal offence. In such cases, the case manager will notify the designated officer as soon as practicably possible after contacting the police)

- Inform the accused individual of the concerns or allegations and likely course of action as soon as possible after speaking to the designated officer (and the police or children's social care services, where necessary). Where the police and/or children's social care services are involved, the case manager will only share such information with the individual as has been agreed with those agencies
- Where appropriate (in the circumstances described above), carefully consider whether suspension of the individual from contact with children at the school is justified or whether alternative arrangements such as those outlined above can be put in place. Advice will be sought from the designated officer, police and/or children's social care services, as appropriate
- **If immediate suspension is considered necessary**, agree and record the rationale for this with the designated officer. The record will include information about the alternatives to suspension that have been considered, and why they were rejected. Written confirmation of the suspension will be provided to the individual facing the allegation or concern within 1 working day, and the individual will be given a named contact at the school and their contact details
- **If it is decided that no further action is to be taken** in regard to the subject of the allegation or concern, record this decision and the justification for it and agree with the designated officer what information should be put in writing to the individual and by whom, as well as what action should follow both in respect of the individual and those who made the initial allegation
- **If it is decided that further action is needed**, take steps as agreed with the designated officer to initiate the appropriate action in school and/or liaise with the police and/or children's social care services as appropriate
- Provide effective support for the individual facing the allegation or concern, including appointing a named representative to keep them informed of the progress of the case and consider what other support is appropriate. [It may be appropriate to refer the individual to their trade union representative, or a work-based trusted colleague, for example. –welfare counselling or medical advice could also be considered.]
- Inform the parents or carers of the child/children involved about the allegation as soon as possible if they do not already know (following agreement with children's social care services and/or the police, if applicable). The case manager will also inform the parents or carers of the requirement to maintain confidentiality about any allegations made against teachers (where this applies) while investigations are ongoing. Any parent or carer who wishes to have the confidentiality restrictions removed in respect of a teacher will be advised to seek legal advice
- Keep the parents or carers of the child/children involved informed of the progress of the case and the outcome, where there is not a criminal prosecution, including the outcome of any disciplinary process (in confidence)
- Make a referral to the DBS where it is thought that the individual facing the allegation or concern has engaged in conduct that harmed or is likely to harm a child, or if the individual otherwise poses a risk of harm to a child

We will inform Ofsted of any allegations of serious harm or abuse by any person living, working, or looking after children at the premises (whether the allegations relate to harm or abuse committed on the premises or elsewhere), and any action taken in respect of the allegations. This notification will be made as soon as reasonably possible and always within 14 days of the allegations being made.

If the school is made aware that the secretary of state has made an interim prohibition order in respect of an individual, we will immediately suspend that individual from teaching, pending the findings of the investigation.

Where the police are involved, wherever possible the academy trust will ask the police at the start of the investigation to obtain consent from the individuals involved to share their statements and evidence for use in the school's disciplinary process, should this be required at a later point.

Timescales

- Any cases where it is clear immediately that the allegation is unsubstantiated or malicious will be resolved within 1 week.
- If the nature of an allegation does not require formal disciplinary action, we will institute appropriate action within 3 working days.
- If a disciplinary hearing is required and can be held without further investigation, we will hold this within 15 working days.

Specific actions

Action following a criminal investigation or prosecution

The case manager will discuss with the local authority's designated officer whether any further action, including disciplinary action, is appropriate and, if so, how to proceed, taking into account information provided by the police and/or children's social care services.

Conclusion of a case where the allegation is substantiated

If the allegation is substantiated and the individual is dismissed or the school ceases to use their services, or the individual resigns or otherwise ceases to provide their services, the case manager and the school's personnel adviser will discuss with the designated officer whether to make a referral to the DBS for consideration of whether inclusion on the barred lists is required.

If the individual concerned is a member of teaching staff, the case manager and personnel adviser will discuss with the designated officer whether to refer the matter to the NCTL to consider prohibiting the individual from teaching.

Individuals returning to work after suspension

If it is decided on the conclusion of a case that an individual who has been suspended can return to work, the case manager will consider how best to facilitate this.

The case manager will also consider how best to manage the individual's contact with the child or children who made the allegation, if they are still attending the school.

Unsubstantiated or malicious allegations

If an allegation is shown to be deliberately invented, or malicious, the headteacher, or other appropriate person in the case of an allegation against the headteacher, will consider whether any disciplinary action is appropriate against the pupil(s) who made it, or whether the police should be asked to consider whether action against those who made the allegation might be appropriate, even if they are not a pupil.

Confidentiality

The school will make every effort to maintain confidentiality and guard against unwanted publicity while an allegation is being investigated or considered.

The case manager will take advice from the local authority's designated officer, police and children's social care services, as appropriate, to agree:

- Who needs to know about the allegation and what information can be shared
- How to manage speculation, leaks and gossip, including how to make parents or carers of a child/children involved aware of their obligations with respect to confidentiality
- What, if any, information can be reasonably given to the wider community to reduce speculation
- How to manage press interest if, and when, it arises

Record-keeping

The case manager will maintain clear records about any case where the allegation or concern meets the criteria above and store them on the individual's confidential personnel file for the duration of the case. Such records will include:

- A clear and comprehensive summary of the allegation
- Details of how the allegation was followed up and resolved
- Notes of any action taken and decisions reached (and justification for these, as stated above)
- If an allegation or concern is not found to have been malicious, the school will retain the records of the case on the individual's confidential personnel file, and provide a copy to the individual. We will retain these records at least until the individual has reached normal pension age, or for 10 years from the date of the allegation if that is longer.
- The records of any allegation that is found to be malicious will be deleted from the individual's personnel file.

References

When providing employer references, we will not refer to any allegation that has been proven to be false, unsubstantiated or malicious, or any history of allegations where all such allegations have been proven to be false, unsubstantiated or malicious.

Learning lessons

After any cases where the allegations are *substantiated*, we will review the circumstances of the case with the local authority's designated officer to determine whether there are any improvements that we can make to the school's procedures or practice to help prevent similar events in the future.

This will include consideration of (as applicable):

- Issues arising from the decision to suspend the member of staff
- The duration of the suspension
- Whether or not the suspension was justified
- The use of suspension when the individual is subsequently reinstated. We will consider how future investigations of a similar nature could be carried out without suspending the individual

Appendix 4: specific safeguarding issues

Children and the court system

Children are sometime required to give evidence in criminal courts, either for crimes committed against them or for crimes they have witnessed. There are two age appropriate guides to support children 5-11-year olds and 12-17 year olds.

They explain each step of the process and support and special measures that are available. There are diagrams illustrating the courtroom structure and the use of video links is explained.

Making child arrangements via the family courts following separation can be stressful and entrench conflict in families. This can be stressful for children. The Ministry of Justice has launched an online child arrangements information tool with clear and concise information on the dispute resolution service. This may be useful for some parents and carers

Children missing from education

A child going missing from education is a potential indicator of abuse or neglect, and such children are at risk of being victims of harm, exploitation or radicalisation. Attendance, absence and exclusions are closely monitored.

There are many circumstances where a child may become missing from education, but some children are particularly at risk. These include children who:

- Are at risk of harm or neglect
- Come from Gypsy, Roma, or Traveller families
- Come from the families of service personnel
- Go missing or run away from home or care
- Are supervised by the youth justice system
- Cease to attend a school
- Come from new migrant families

We will follow our procedures for unauthorised absence and for dealing with children who go missing from education, particularly on repeat occasions, to help identify the risk of abuse and neglect, including sexual exploitation, and to help prevent the risks of going missing in future. This includes informing the local authority if a child leaves the school without a new school being named and adhering to requirements with respect to sharing information with the local authority, when applicable, when removing a child's name from the admission register at non-standard transition points.

Staff will be trained in signs to look out for and the individual triggers to be aware of when considering the risks of potential safeguarding concerns which may be related to being missing, such as travelling to conflict zones, FGM and forced marriage.

If a staff member suspects that a child is suffering from harm or neglect, we will follow local child protection procedures, including with respect to making reasonable enquiries. We will make an immediate referral to the MARU, and the police, if the child is in immediate danger or at risk of harm.

Children with family members in prison

Approximately 200,000 children have a parent sent to prison each year. These children are at risk of poor outcomes including poverty, stigma, isolation and poor mental health. NICCO provides information designed to support professionals working with offenders and their children, to help mitigate negative consequences for those children.

Child sexual exploitation

Child sexual exploitation (CSE) is a form of sexual abuse where children are sexually exploited for money, power or status.

This can involve violent, humiliating and degrading sexual assaults, but does not always involve physical contact and can happen online. For example, young people may be persuaded or forced to share sexually explicit images of themselves, have sexual conversations by text, or take part in sexual activities using a webcam.

Children or young people who are being sexually exploited may not understand that they are being abused. They often trust their abuser and may be tricked into believing they are in a loving, consensual relationship.

If a member of staff suspects CSE, they will discuss this with the DSL. The DSL will trigger the local safeguarding procedures, including a referral to the MARU and the police, if appropriate.

Indicators of sexual exploitation can include a child:

- Appearing with unexplained gifts or new possessions
- Associating with other young people involved in exploitation
- Having older boyfriends or girlfriends
- Suffering from sexually transmitted infections or becoming pregnant
- Displaying inappropriate sexualised behaviour
- Suffering from changes in emotional wellbeing
- Misusing drugs and/or alcohol
- Going missing for periods of time, or regularly coming home late
- Regularly missing school or education, or not taking part in education

Criminal Exploitation: County Lines

Criminal exploitation of children is a geographically widespread form of harm that is a typical feature of county lines criminal activity: drug networks or gangs groom and exploit children and young people to carry drugs and money from urban areas to suburban and rural areas, market and seaside towns. Key to identifying potential involvement in county lines are missing episodes, when the victim may have been trafficked for the purpose of transporting drugs and a referral to the National Referral Mechanism should be considered. Like other forms of abuse and exploitation, county lines exploitation:

- can affect any child or young person (male or female) under the age of 18 years;
- can affect any vulnerable adult over the age of 18 years;
- can still be exploitation even if the activity appears consensual;
- can involve force and/or enticement-based methods of compliance and is often accompanied by violence or threats of violence;
- can be perpetrated by individuals or groups, males or females, and young people or adults; and
- is typified by some form of power imbalance in favour of those perpetrating the exploitation. Whilst age may be the most obvious, this power imbalance can also be due to a range of other factors including gender, cognitive ability, physical strength, status, and access to economic or other resources.

EHE- Elective Home Education

We will always advise the Local Authority at the earliest opportunity when children are withdrawn from the school to be electively home educated, completing the required Elective Home Education Form (as in link below) and returning it with a copy of a letter from the parents / carers confirming that they are withdrawing the child from the school to home educate.

Further guidance is available via

<http://www.cornwall.gov.uk/media/24385261/information-for-home-educators-2016-17.pdf>

<http://www.cornwall.gov.uk/education-and-learning/schools-and-colleges/educationwelfare/elective-home-education/>

<https://www.supportincornwall.org.uk/kb5/cornwall/directory/home.page>

The DSL / DDSL will always alert the Local Authority where there are concerns regarding the safety and welfare of the child in question.

Female Genital Mutilation

The DSL will make sure that staff have access to appropriate training to equip them to be alert to children affected by FGM or at risk of FGM.

Section 8.3 of this policy sets out the procedures to be followed if a staff member discovers that an act of FGM appears to have been carried out or suspects that a pupil is at risk of FGM.

Indicators that FGM has already occurred include:

- A pupil confiding in a professional that FGM has taken place
- A mother/family member disclosing that FGM has been carried out
- A family/pupil already being known to social services in relation to other safeguarding issues
- A girl:
 - Having difficulty walking, sitting or standing, or looking uncomfortable
 - Finding it hard to sit still for long periods of time (where this was not a problem previously)
 - Spending longer than normal in the bathroom or toilet due to difficulties urinating
 - Having frequent urinary, menstrual or stomach problems
 - Avoiding physical exercise or missing PE
 - Being repeatedly absent from school, or absent for a prolonged period
 - Demonstrating increased emotional and psychological needs – for example, withdrawal or depression, or significant change in behaviour
 - Being reluctant to undergo any medical examinations
 - Asking for help, but not being explicit about the problem
 - Talking about pain or discomfort between her legs

Potential signs that a pupil may be at risk of FGM include:

- The girl's family having a history of practising FGM (this is the biggest risk factor to consider)
- FGM being known to be practised in the girl's community or country of origin
- A parent or family member expressing concern that FGM may be carried out
- A family not engaging with professionals (health, education or other) or already being known to social care in relation to other safeguarding issues
- A girl:
 - Having a mother, older sibling or cousin who has undergone FGM
 - Having limited level of integration within UK society
 - Confiding to a professional that she is to have a "special procedure" or to attend a special occasion to "become a woman"
 - Talking about a long holiday to her country of origin or another country where the practice is prevalent, or parents stating that they or a relative will take the girl out of the country for a prolonged period
 - Requesting help from a teacher or another adult because she is aware or suspects that she is at immediate risk of FGM

- Talking about FGM in conversation – for example, a girl may tell other children about it (although it is important to take into account the context of the discussion)
- Being unexpectedly absent from school
- Having sections missing from her 'red book' (child health record) and/or attending a travel clinic or equivalent for vaccinations/anti-malarial medication

The above indicators and risk factors are not intended to be exhaustive.

Forced marriage

Forcing a person into marriage is a crime. A forced marriage is one entered into without the full and free consent of one or both parties and where violence, threats, or any other form of coercion is used to cause a person to enter into a marriage. Threats can be physical or emotional and psychological.

Staff will receive training around forced marriage and the presenting symptoms. We are aware of the 'one chance' rule, i.e. we may only have one chance to speak to the potential victim and only one chance to save them.

If a member of staff suspects that a pupil is being forced into marriage, they will speak to the pupil about their concerns in a secure and private place. They will then report this to the DSL.

The DSL will:

- Speak to the pupil about the concerns in a secure and private place
- Activate the local safeguarding procedures and refer the case to the local authority's designated officer
- Seek advice from the Forced Marriage Unit on 020 7008 0151 or fm@fco.gov.uk
- Refer the pupil to an education welfare officer, pastoral tutor, learning mentor, or school counsellor, as appropriate

Looked after children

The most common reason for children becoming looked after is as a result of abuse and/or neglect. Governing bodies should ensure that staff have the skills, knowledge and understanding necessary to keep looked after children safe. KCSIE (revised September 2016)

A designated children in care lead has been appointed from the senior leadership team in each academy. The designated child in care lead will ensure that appropriate staff have the information they need in relation to a child's looked after legal status (whether they are looked after under voluntary arrangements with consent of parents or on an interim or full care order) and contact arrangements with birth parents or those with parental responsibility. They are also responsible for ensuring that they also have information about the child's care arrangements and the levels of authority delegated to the carer by the local authority looking after him/her. The designated children in care lead will have details of the child's social worker. They will have drawn up an individual education plan in consultation with the children in care education support service (CICES).

The designated child in care lead will attend regular training/briefings provided by Cornwall Council regardless of whether there are currently children within the school who are in care.

Missing pupils

Our procedures are designed to ensure that a missing child is found and returned to effective supervision as soon as possible. As soon as a child is reported missing we will,

- Alert parents (unless they are the reporters of the absence)
- Alert all members of staff
- Use senior members of staff and site staff with radios to search the area

- Report to the Police if necessary

Unsatisfactory supervision / collection of children will be recorded and monitored.

Non-collection of children

If a child is not collected at the end of the session/day, we will:

- Provide supervision
- Follow up on all emergency contacts for the child
- Contact the MARU for advice

We will never release the child to another parent or even another family member if they are not authorised by the parent / carer as a 'collector'. Non-collection will be recorded and monitored.

Online safety

Mobile phones, laptops, iPads, and other on-line type products are integrated into all our lives. Many are used within our Trust. However, there are those that seek to use these for their own or others gratification. The link below provides more information on on-line safety and cover issues such as: · Bullying, including online bullying and prejudice-based bullying, racialization and/or extremist behaviour · Child sexual exploitation and trafficking · The impact of new technologies on sexual behaviour, for example sexting.

<http://swgfl.org.uk/products-services/online-safety/resources/>

An effective approach to online safety empowers a school to protect and educate the whole school community in their use of technology and establishes mechanisms to identify, intervene in and escalate any incident where appropriate.

The breadth of issues classified within online safety is considerable, but can be categorised into three areas of risk:

- content: being exposed to illegal, inappropriate or harmful material; for example pornography, fake news, racist or radical and extremist views;
- contact: being subjected to harmful online interaction with other users; for example commercial advertising as well as adults posing as children or young adults; and
- conduct: personal online behaviour that increases the likelihood of, or causes, harm; for example making, sending and receiving explicit images, or online bullying.

Education

Opportunities to teach safeguarding, including online access is embedded into our curriculum.

- UKCCIS have recently published their Education for a connected world framework. Online safety is a whole school issue. The framework aims to support the development of the curriculum and is of particular relevance to PSHE education and Computing. It is designed, however, to be usable across the curriculum and beyond and to be central to a whole school approach to safeguarding and online safety..

Children that are being exposed to inappropriate gaming and or material online will be referred to the MARU and/or police.

Filters and monitoring

Whilst filtering and monitoring are an important part of the online safety picture for our schools to consider, it is only one part. Governors and staff consider a whole school approach to online safety. This includes a clear policy on the use of mobile technology in the school.

Whilst it is essential that our staff ensure that appropriate filters and monitoring systems are in place, we are mindful that “over blocking” may restrict as to what children can be taught with regard to online teaching and safeguarding.

ACE Trust take online safety very seriously both in terms of our pupils and all of our staff. Please also refer to ACE Trust e-safety/online policy and the acceptable user policy for staff.

Filtering

ACE Trust is adhering to the guidance within the revised KCSIE (September 2018) Annex C and this is reflected within our e-safety policy.

Private Fostering

A private fostering arrangement is when a child is cared for consecutively for 28 days or longer by someone who is not a member of that child’s immediate family. In such a case the local authority should be informed.

If the school are aware of such an arrangement being in place they must advise the family that the school have a responsibility to inform the local authority and encourage the family to advise the local authority themselves..

Advice or a referral can be made via MARU

Preventing Radicalisation

Radicalisation refers to the process by which a person comes to support terrorism and forms of extremism. Extremism is vocal or active opposition to fundamental British values, such as democracy, the rule of law, individual liberty, and mutual respect and tolerance of different faiths and beliefs.

Schools have a duty to prevent children from being drawn into terrorism. The DSL will undertake Prevent awareness training and make sure that staff have access to appropriate training to equip them to identify children at risk.

We will assess the risk of children in our school being drawn into terrorism. This assessment will be based on an understanding of the potential risk in our local area, in collaboration with our local safeguarding children board and local police force.

We will ensure that suitable internet filtering is in place, and equip our pupils to stay safe online at school and at home.

There is no single way of identifying an individual who is likely to be susceptible to an extremist ideology. Radicalisation can occur quickly or over a long period.

Staff will be alert to changes in pupils’ behaviour.

The government website [Educate Against Hate](#) and charity [NSPCC](#) say that signs that a pupil is being radicalised can include:

- Refusal to engage with, or becoming abusive to, peers who are different from themselves
- Becoming susceptible to conspiracy theories and feelings of persecution
- Changes in friendship groups and appearance
- Rejecting activities they used to enjoy
- Converting to a new religion
- Isolating themselves from family and friends
- Talking as if from a scripted speech
- An unwillingness or inability to discuss their views

- A sudden disrespectful attitude towards others
- Increased levels of anger
- Increased secretiveness, especially around internet use
- Expressions of sympathy for extremist ideologies and groups, or justification of their actions
- Accessing extremist material online, including on Facebook or Twitter
- Possessing extremist literature
- Being in contact with extremist recruiters and joining, or seeking to join, extremist organisations
- Children who are at risk of radicalisation may have low self-esteem, or be victims of bullying or discrimination. It is important to note that these signs can also be part of normal teenage behaviour – staff should have confidence in their instincts and seek advice if something feels wrong.

If staff are concerned about a pupil, they will follow our procedures set out in section 8.5 of this policy, including discussing their concerns with the DSL.

Staff should **always** take action if they are worried.

Further information on the school's measures to prevent radicalization are set out in other school policies and procedures, including the Tackling Extremism and Radicalisation Policy, e-safety/online safety policy, Child Protection & Safeguarding, Equality and Diversity Policy, Anti-Bullying Policy, Visitors Policy and Positive Behaviour Management Policy.

Reduced Time Tables

Should a reduced time table be instigated or be necessary, guidance will be reviewed with the aim the child returns to school full time at the earliest moment or other provision sought to ensure the child/ young person has their full entitlement.

Guidance is available at <https://www.cornwall.gov.uk/reducedtimetables>

The use of a reduced timetable should be an exceptional measure in this school. It is illegal for a school to impose a reduced timetable, but it is accepted that a reduced timetable may be appropriate provided that the setting can demonstrate that the Local Authority's best practice guidance has been followed.

'Guidance for schools and educational settings' details further the actions and procedures that need to be followed <https://www.cornwall.gov.uk/media/22616684/reduced-timetables-guidance-v20.pdf>

Sexual violence and sexual harassment between children in schools and colleges

Sexual violence and sexual harassment can occur between two children of any age and sex. It can also occur through a group of children sexually assaulting or sexually harassing a single child or group of children. Children who are victims of sexual violence and sexual harassment will likely find the experience stressful and distressing. This will, in all likelihood, adversely affect their educational attainment. Sexual violence and sexual harassment exist on a continuum and may overlap, they can occur online and offline (both physical and verbal) and are never acceptable. It is important that all victims are taken seriously and offered appropriate support. Staff should be aware that some groups are potentially more at risk. Evidence shows girls, children with SEND and LGBT children are at greater risk.

Staff should be aware of the importance of:

- making clear that sexual violence and sexual harassment is not acceptable, will never be tolerated and is not an inevitable part of growing up;
- not tolerating or dismissing sexual violence or sexual harassment as "banter", "part of growing up", "just having a laugh" or "boys being boys"; and

- challenging behaviours (potentially criminal in nature), such as grabbing bottoms, breasts and genitalia, flicking bras and lifting up skirts. Dismissing or tolerating such behaviours risks normalising them.

What is Sexual violence and sexual harassment?

Sexual violence

It is important that school and college staff are aware of sexual violence and the fact children can, and sometimes do, abuse their peers in this way. When referring to sexual violence we are referring to sexual offences under the Sexual Offences Act 2003¹⁰⁵ as described below:

- **Rape:** A person (A) commits an offence of rape if: he intentionally penetrates the vagina, anus or mouth of another person (B) with his penis, B does not consent to the penetration and A does not reasonably believe that B consents.
- **Assault by Penetration:** A person (A) commits an offence if: s/he intentionally penetrates the vagina or anus of another person (B) with a part of her/his body or anything else, the penetration is sexual, B does not consent to the penetration and A does not reasonably believe that B consents.
- **Sexual Assault:** A person (A) commits an offence of sexual assault if: s/he intentionally touches another person (B), the touching is sexual, B does not consent to the touching and A does not reasonably believe that B consents.

What is consent?

Consent is about having the freedom and capacity to choose. Consent to sexual activity may be given to one sort of sexual activity but not another, e.g. to vaginal but not anal sex or penetration with conditions, such as wearing a condom. Consent can be withdrawn at any time during sexual activity and each time activity occurs. Someone consents to vaginal, anal or oral penetration only if s/he agrees by choice to that penetration and has the freedom and capacity to make that choice.

Sexual harassment

When referring to sexual harassment we mean 'unwanted conduct of a sexual nature' that can occur online and offline. When we reference sexual harassment, we do so in the context of child on child sexual harassment. Sexual harassment is likely to: violate a child's dignity, and/or make them feel intimidated, degraded or humiliated and/or create a hostile, offensive or sexualised environment.

Whilst not intended to be an exhaustive list, sexual harassment can include:

- sexual comments, such as: telling sexual stories, making lewd comments, making sexual remarks about clothes and appearance and calling someone sexualised names;
 - sexual "jokes" or taunting;
 - physical behaviour, such as: deliberately brushing against someone, interfering with someone's clothes (schools and colleges should be considering when any of this crosses a line into sexual violence - it is important to talk to and consider the experience of the victim) and displaying pictures, photos or drawings of a sexual nature; and
 - online sexual harassment. This may be standalone, or part of a wider pattern of sexual harassment and/or sexual violence.¹⁰⁸ It may include:
 - non-consensual sharing of sexual images and videos;
 - sexualised online bullying;
 - unwanted sexual comments and messages, including, on social media; and
 - sexual exploitation; coercion and threats

The response to a report of sexual violence or sexual harassment

The initial response to a report from a child is important. It is essential that all victims are reassured that they are being taken seriously and that they will be supported and kept safe. A victim should never be given the impression that they are creating a problem by reporting

sexual violence or sexual harassment. Nor should a victim ever be made to feel ashamed for making a report.

If staff have a concern about a child or a child makes a report to them, they should follow the referral process as set out from paragraph 23 in Part 1 of KCSiE 2018.. As is always the case, if staff are in any doubt as to what to do they should speak to the designated safeguarding lead (or a deputy).

Visitors and checking identity and suitability

All visitors must comply with the ACE Visitors policy and Code of Conduct. Personnel working on the school site must comply with the following code of conduct:

- They must sign in and out of the school premises at the main school office. Photographic evidence of their identity must be provided (failure to produce ID shall mean refusal of entry to the site). The school office will issue them with a lanyard which they must wear at all times. Staff are trained to challenge other adults if they are not wearing a lanyard.
- They must provide their certification for recent Tier 2 Safeguarding and Prevent training. If visitors are unable to provide this information, training will be available on a half termly basis across the ACE Trust.
- All visitors will be required to leave their belongings, including their mobile phone(s), in a safe place during their visit.

If the visitor is unknown to the setting, we will check their credentials and reason for visiting before allowing them to enter the setting. Visitors should be ready to produce identification.

All visitors to our setting, including visiting speakers, will be accompanied by a member of staff at all times. (There may be times when known contractors are left unsupervised to carry out their assessments / work subject to local risk assessment. We will not invite into the school any speaker who is known to disseminate extremist views and will carry out appropriate checks to ensure that any individual or organisation using school facilities is not seeking to disseminate extremist views or radicalise pupils or staff.

Young Carers

As a Trust we recognise the needs of young carers in that they can be more vulnerable or placed at risk. In our schools we aim to be able to identify young carers and ensure they are supported to help reach their potential with an understanding that staff and volunteers may need to refer into early help services for an assessment of their needs via the Early Help Hub.

Appendix 5 : Key Roles and Responsibilities:

Designated Safeguarding Lead (DSL) and Deputy Safeguarding Lead (DDSL):

The school follows the guidance within KCSIE 2018 which includes:

- Being a central point of contact for all staff
- Confident in knowing what to do and where to go if you have concerns
- Ensure records are kept up to date, safely and securely
- That all staff are aware of their safeguarding responsibilities
- Be the initial point of contact for external agencies in relation to safeguarding issues
- Promote awareness of safeguarding in relation to the children, all staff, the governing body and parents

Both will be trained to Tier 3 level.

Our larger schools will have more than one DDSL. If this is the case then we ensure that there is excellent communication between the Safeguarding team within the school and that all records are kept centrally and available to be accessed by the designated safeguarding staff.

Local Advisory Board

The LAB should meet the requirements of Part 2 of KCSIE (September 2018) this includes:

- Taking leadership responsibility for the school's Safeguarding and Child Protection arrangements; this includes assisting the DSL with the S157 safeguarding self- assessment on an annual basis
- That they are up to date with emerging issues in Safeguarding and recognise the strategies by the Local Authority in trying to keep children safe in Cornwall
- Ensuring that we have a nominated link Governor for Child Protection and Safeguarding and this person has received appropriate training for their role.
- The designated safeguarding governor visits the school regularly to review safeguarding within the school and includes within visits regular discussions with children
- Ensuring that there is a DSL for Child Protection, appointed from the Senior Management Team and one who oversees and line manages the activities and the activities of all other leads in the school. The number of DDSL's needs to be sufficient in number depending upon the size and demands of the school.
- That the DSL/DDSL are fully equipped to undertake the Safeguarding role and that they have access to the appropriate training and that this is updated with certified training every two years.
- That a DSL is on the premises and available during school hours, where this is not available there is cover in place. Therefore, ensuring there is cover at all times.
- That there is a nominated link Governor for CIC (Children in Care) and SEND alongside other nominated leads in the School on these issues;
- That there is an appointed teacher who is responsible for Children in Care who understands his/her Safeguarding responsibilities and is fully aware of the Local Safeguarding procedures and attends regular training and briefings in relation to children in care.
- Safeguarding is an agenda item at every LAB meeting
- That there are procedures in place in handling allegations against Staff, Volunteers and Governors and any concerns staff and volunteers have (including concerns about the school) are brought to the attention of the Local Authority Designated Lead (LADO) in every case.

- The LAB have reference to a whistle blowing director.
- That all Staff, (including volunteers and frequent visitors) who will be working in the school are given a mandatory induction which includes knowledge regarding abuse, neglect, staff code of conduct specific safeguarding issues and familiarisation with Child Protection responsibilities. The induction will also include procedures to be followed if anyone has any concerns about a Child's Safety or welfare, and knowledge about the academies' policies and procedures.
- That all staff have regular reviews of their own practice to ensure ongoing personal/professional development.
- That all staff receives the appropriate training which is regularly updated. Safeguarding briefings and updates are given to all staff including governors a minimum of yearly.
- To ensure that children are taught about Safeguarding, including on line, through teaching and learning opportunities, as part of providing a broad and balanced curriculum including PSHE.
- Implementation of the ACE On-line/ E - safety Policy equipped to deal with a widening range of issues associated with technology.
- That they understand the need to identify trends and patterns regarding Children Missing from Education (CME) and to respond to / refer where required.
- That the school notifies the MARU if there is an unexplained absence of a pupil who is the subject of a Child Protection Plan.
- That the school notifies the MARU if it is thought or known that a child or young person may be Privately Fostered.
- Making sure that the Child Protection/Safeguarding Policy is available to parents and carers as appropriate including displaying on the school's website.
- That all relevant safeguarding policies are reviewed on a regular basis (safeguarding policy should be annually) and that all legislative changes as well as changes to mandatory national guidance and local processes are reflected within the relevant policies and procedures within school

Appendix 6: Key Messages from Serious Case Reviews (SCR)

When children die or are seriously injured consideration is given as to whether there needs to be a serious case review (SCR). The purpose is to identify what information we had, what actions were taken, and what if anything we can learn from this that may improve practice in the future.

Messages from serious case reviews nationally and locally are published on a regular basis the following are some of the key messages which from a school perspective we need to be aware of, they include:

- You can never age bruising
- Ensure you observe children as much as you can in natural light if you are concerned about bruising or marks
- If you see an injury to one child always consider the siblings
- Cases where Interpreters/culture/communication/travellers/language/religion were involved
- Parents with a mental health problem/ leaning disability/ stress/postnatal depression
- Where Domestic Abuse is present
- Disguised compliance/resistant families/hard to reach families/professional challenge
- Children with chronic illness/serious health conditions
- Unsupported and socially isolated parents
- Poor information gathering, sharing and recording within schools as well as with other agencies.
- Assessing the complete circumstances of the child and family, including their history.
- Critically analysing all information.
- Ensuring the needs of the child are paramount above those of the parents.
- Appropriate representation is needed at key meetings- Child Protection Case Conferences
- Effective multi-agency working
- Staff to be curious, inquisitive and ask more questions
- Reflection and constructive challenge for staff when working with vulnerable children and young people
- Staff to observe safer working practices