



## Projected Plan for Pupil Premium Budget allocation 2020-2021

Overview of Pupil Premium Grant (PPG) received		
Total number of pupils eligible for PPG	16 PP = £21,520 3 (LAC / PLAC / Special Guardianship Order) = £7,035 Total - 19 chn (9%) = £28,555	
Amount of PPG received per pupil	Pupil Premium	£1,345
	LAC / Previously LAC / Special Guardianship	£2,345
School population	Based on 207 chn from October Census 2020 = 9%	
Total amount of PPG received 2020-2021	£28,555	
Carry-forward from previous years (unspent due to COVID)	£54,095	
Total PPG to spend	£82,650	

### Tiered approach to spending

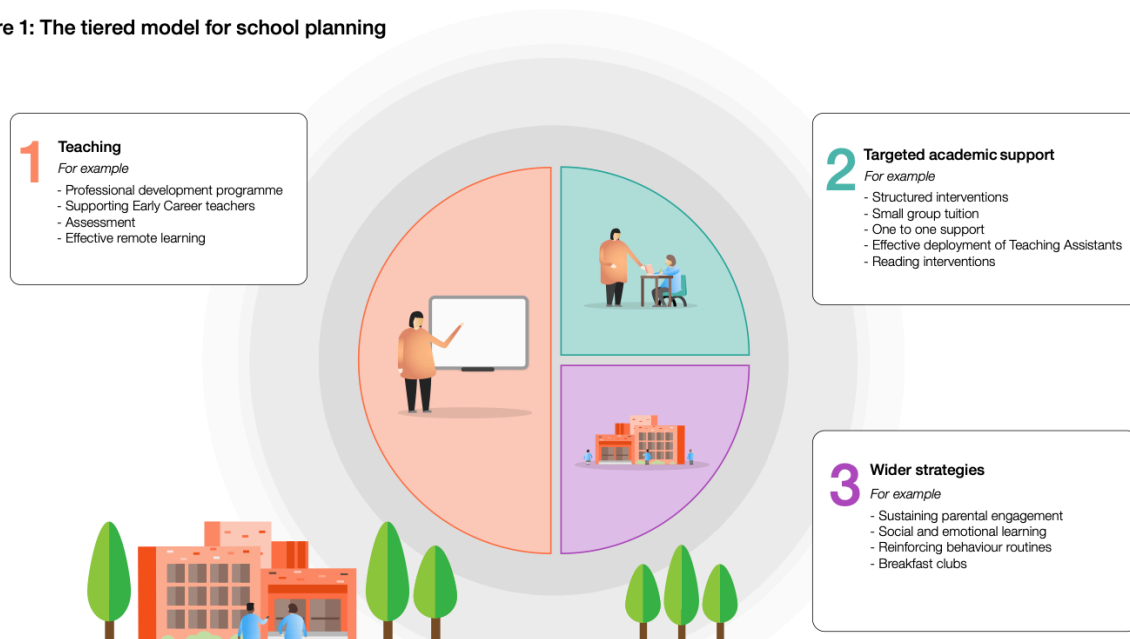
The following information has been written using the [EEF Guide to Supporting School Planning: A Tiered Approach to 2021 as a reference tool](#).

#### Adopting a tiered approach

The tiered approach is a guide, not a prescription. Many strategies will overlap categories, and the balance between categories will vary throughout the school year as priorities change. However, the idea of tiers of support can offer a useful framework for thinking

about how to balance different challenges schools are facing this year. Schools can also use a tiered approach to help focus on a small number of strategies that are likely to make the biggest difference.

Figure 1: The tiered model for school planning



No.	Allocation of support	Cost	Percentage of total spend
1	High quality teaching	£39,950	48%
2	Targeted academic support	£26,100	32%
3	Wider strategies	£15,400	19%

Below is the breakdown record of Pupil Premium grant spending per project / item. The No. in the first column links to the table above to help identify where the support has been allocated.

Breakdown of Pupil Premium grant spending by project / item 2020-2021				
No.	Year Group	Breakdown of project / item	Cost	Objective
	Years 5/6			
2		Booster classes for Yr 5/6	£4,500	Development of Maths and English skills through gap analysis, addressing misconceptions and SATs revision
	Years 3/4			
2		Additional support between Y3/4	£3,000	Targeted support to help raise the attainment of all children through quality first teaching and intervention
	Years 1/2			
2		Additional support between Y1/2	£3,000	Targeted support to help raise the attainment of all children through quality first teaching and intervention
	EYFS			
1		Additional EYP in EYFS	£16,000	Targeted support to extend skills in phonics and basic numeracy and literacy skills
	Whole School			
1		Effective diagnostic assessment	£3,000	Assessment tasks that give staff the best diagnostic information to staff as well as the knowledge, skills and competencies to move learning on
1		High quality teaching for all	£10,000	Teacher support with curriculum planning as well as effective teaching using technology (using EEF Teaching and Learning Toolkit)
3		Play therapy	£10,500	Supporting children with their social and emotional wellbeing through play and outreach work
3		Subsidised school visits	£3000	Extending experiences and building confidence Visits directly linked to the curriculum thereby increasing attainment in reading, writing and maths
3		Food support	£700	To support our parents who are no longer eligible for FSM but suffering financial hardship or to support families with hardships over holiday periods with food parcels
3		Subsidised music lessons	£750	To increase self esteem To provide opportunities for children in receipt of PP To improve on skills in reading, writing and maths
2		iPads and computers	£12,000	To access iPads and computers; - Within lessons - ICT clubs to support home learning - After school clubs
1		Subject Leaders for Literacy and Maths release time	£4,500	Release time for Subject Leaders to help them; - Address within school variance - Ensure quality first teaching - Share best practice - Ensure more accurate data / assessment - Ensure effective interventions - Increase engagement of parents in child's learning
2		1:2 tuition	£3600	Intense intervention to increase attainment in reading, writing and maths
1		Staff CPD	£6000	To provide training for staff in targeted CPD to help raise attainment in reading, writing and maths such as: - Metacognition (EEF Toolkit) - Target Tracker - Literacy and Language / R.W.Inc - PA Maths - SEN

1&3 (50:50)	PE specialist	£900	Strategic role to support teachers and children in raising attainment in reading, writing and maths through enrichment activities; <ul style="list-style-type: none"> <li>- Giving guidance and advice to class teachers</li> <li>- Delivering outstanding PE lessons</li> <li>- Providing chn with PE kit</li> <li>- To give PP children the opportunity to play in competitions for the school</li> </ul>
	Total:	£81,450	
	Remainder:	£1,200	

We will review the Pupil Premium Strategy for this year in **July 2021**